

Lancaster County Board of Corrections

August 3, 2017

LANCASTER COUNTY DEPARTMENT OF CORRECTIONS

:

Agenda

Thursday, August 3, 2017

8:30 a.m.

- I. Approval of the April 27, 2017 meeting's minutes
 - a. April 27, 2017 minutes

- II. Population Statistics & Charts
 - a. Average Daily Population Comparison
 - b. Booking and Lodging Totals
 - c. Pre-Trial and Sentence Conversion Release
 - d. Custodial Sanctions/County Reinvestment Act
 - e. Regional Center Waiting Periods
 - f. Community Hospital Posts
 - g. Felonies Sentenced to Lancaster County
 - h. Drug Court Remand
 - i. Violation of House Arrest
 - j. Fiscal Year 2017 Monthly Status Report

- III. Programming

- IV. Transportation

- V. Work Crews

- VI. Training

**MINUTES
BOARD OF CORRECTIONS MEETING
COUNTY-CITY BUILDING
ROOM 113 - BILL LUXFORD STUDIO
THURSDAY, APRIL 27, 2017
9:00 A.M.**

Board Members Present: Bill Avery, Vice Chair
Roma Amundson
Todd Wiltgen
Jennifer Brinkman

Board Members Absent: Deb Schorr, Chair

Others Present: Brad Johnson, Interim Corrections Director
Kerry Eagan, Chief Administrative Officer
Ann Taylor, County Clerk's Office

The Vice Chair called the meeting to order at 10:35 a.m.

AGENDA ITEM

1 APPROVAL OF THE MINUTES OF THE JANUARY 26, 2017 MEETING

MOTION: Amundson moved and Brinkman seconded approval of the minutes of the January 26, 2017 meeting. Brinkman, Amundson and Avery voted yes. Schorr and Wiltgen were absent. Motion carried 3-0.

2 POPULATION STATISTICS & CHARTS

Brad Johnson, Corrections Director, discussed the following population statistics and charts (see agenda packet):

A. Average Daily Population Comparison

The average daily population was 624.5 for the first quarter of 2017 compared to 565.5 for the same period in 2016 (a 13.3% increase). The facility is at 94.5% of operational capacity of 665 beds. Other population figures are as follows: Felony arrests (244.7); Misdemeanor arrests (398.0); Felons sentenced (31.0); Misdemeanors sentenced (46.7); Held for other jurisdictions (49.7); and Percent conditionally released (40.5).

In response to a question from Avery, Johnson said it requires 5 staff members to staff a pod 24 hours/7 days a week.

B. Booking and Lodging Totals

Average bookings were down 4.4% and average lodgings were down 17.9%, compared to the same time period last year. Johnson said these numbers indicate it is length of stay that is driving the population numbers.

C. Pre-Trial and Sentence Conversion Release

Behavioral health/jail diversion numbers have decreased since last year. Pre-trial release numbers remained steady and sentence conversion numbers increased dramatically (see graph in agenda packet).

D. Custodial Sanctions/County Reinvestment Act

There have been 163 custodial sanctions since the 2015-2016 Legislative Session's LB 605, which changed classification of penalties, punishments, probation and parole provisions, and provisions relating to criminal records and restitution, went into effect on August 31, 2015. Johnson said those offenders served a total of 2,770 days in the jail, adding 24 probationers served 617 days this quarter.

E. Community Hospital Posts

Johnson discussed a chart detailing community hospital posts. **NOTE:** The facility must staff each offender who is hospitalized on a 24/7 basis and two staff members must accompany any offender that is having a procedure.

F. Felonies Sentenced to Lancaster County

27 Felony 3A inmates served a total of 5,992 days (207.12 average days) and 38 Felony 4 inmates served 8,532 days (224.61 average days).

Wiltgen arrived at the meeting at 10:49 a.m.

G. Drug Court Remand

29 Drug Court remands served 470 days (16.2 average days).

H. Violation of House Arrest

11 offenders served 464 days (42.2 average days).

3 PROGRAMMING

See agenda packet.

4 TRANSPORTATION

See agenda packet.

5 WORK CREWS

See agenda packet.

6 TRAINING

See agenda packet.

7 COUNTY JUSTICE REINVESTMENT GRANT PROGRAM

Johnson noted the County received a County Justice Reinvestment Grant in the amount of \$74,400.

8 SKID LOADER LEASE DISCUSSION

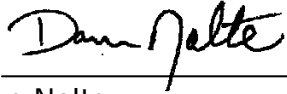
Johnson said Corrections has rented a skid loader every year on a weekly basis to help pick up gravel in the parking lot. This year they will have additional uses for a skid loader and would like to lease the equipment. He compared the cost of renting one for four to five weeks for \$2,500 to leasing one for a full year for \$4,500. Johnson said it could also be used by other departments, provided the operators were properly trained. There was no objection to the request.

Avery asked Johnson to comment on a death that occurred at the facility last night. Kerry Eagan, Chief Administrative Officer, felt discussion would not be appropriate as there will be a grand jury investigation. He referred questions to the County Attorney's Office.

MOTION: Amundson moved and Avery seconded to accept the Corrections Director's report. Amundson, Avery, Brinkman and Wiltgen voted yes. Schorr was absent. Motion carried 4-0.

9 ADJOURNMENT

MOTION: Amundson moved and Wiltgen seconded to adjourn the meeting at 10:59 a.m. Avery, Brinkman, Amundson and Wiltgen voted yes. Schorr was absent. Motion carried 4-0.

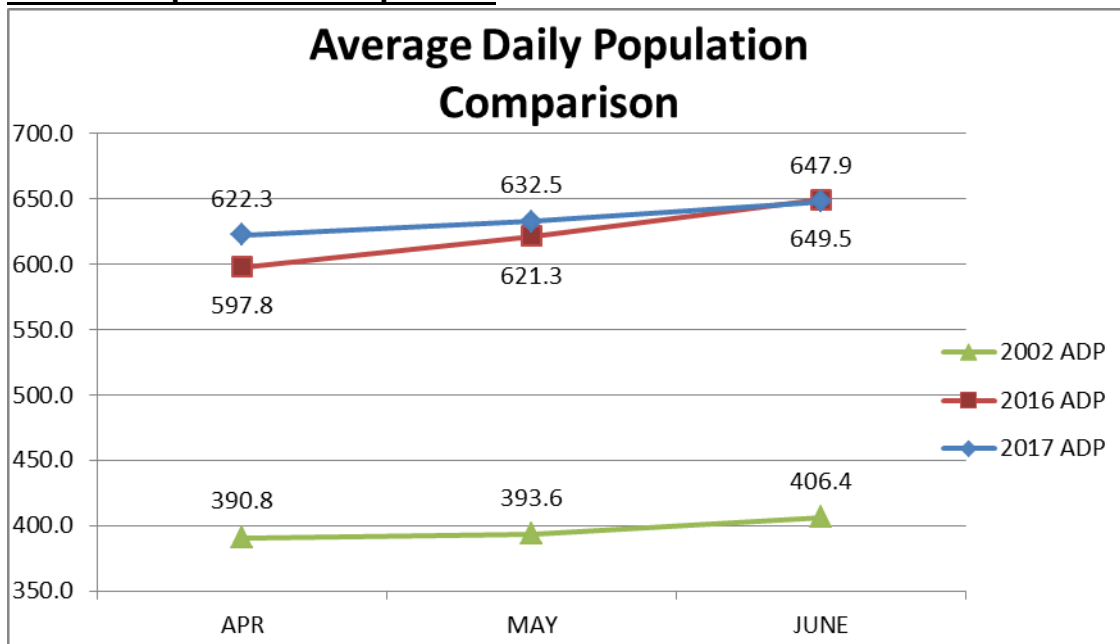


Dan Nolte
Lancaster County Clerk



II. Population Statistics (April-June, 2017)

A. ADP Population Comparison



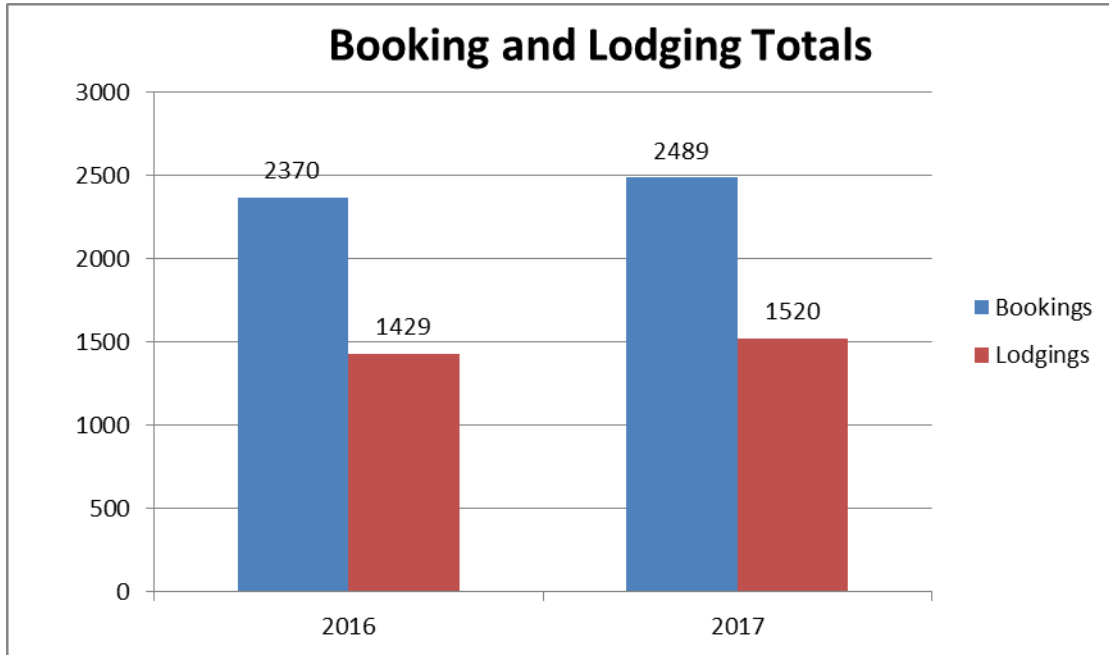
- The average daily population (ADP) for this period of 2017 was 634.2 detainees compared to 622.9 for the same period in 2016. This is a 1.8% increase and a 59.8% increase when compared to 2002.
- This period ADP consumed 95.4 % of the department's operational capacity of 665.
- Other population averages:
 - Felony Arrests-256.0
 - Misdemeanor Arrests-438.7

Lancaster County Board of Corrections

August 3, 2017

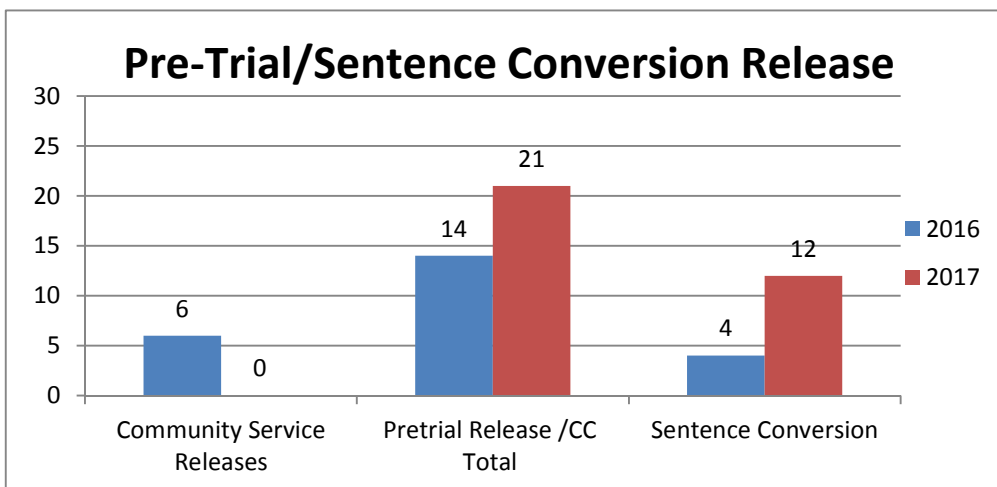
- Felons Sentenced-26.3
- Misdemeanors Sentenced-47.0
- Held for other Jurisdictions-61.7
- Percent Conditionally Released-38.9%

B. Booking & Lodging Totals



- Average bookings were up 5.0% compared to same time period last year.
- Average lodgings were up 6.4% compared to same time period last year.

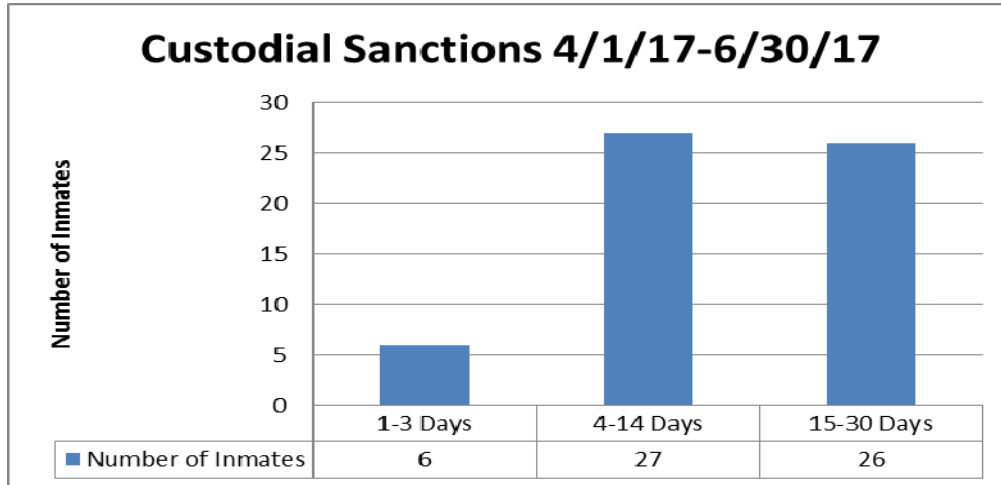
C. Pre-Trial/Sentence Conversion Release



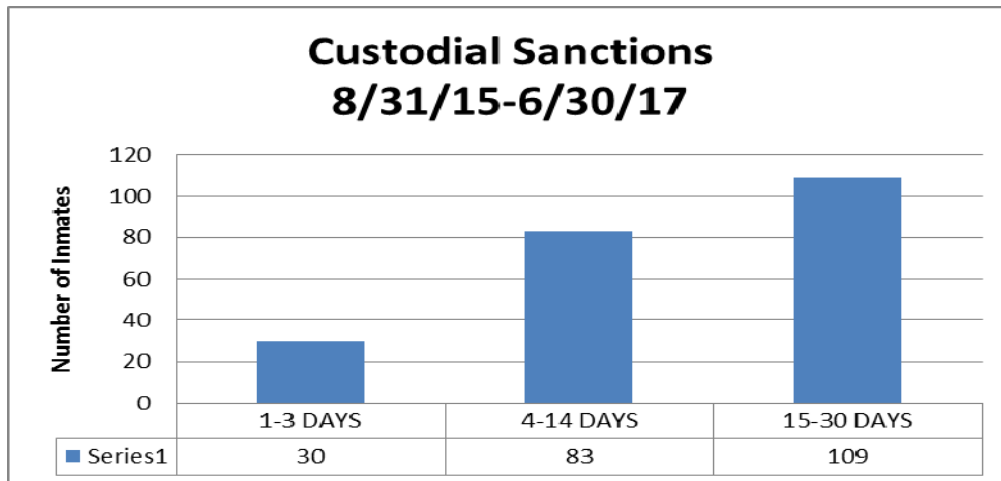
Lancaster County Board of Corrections
August 3, 2017

D. Custodial Sanctions/County Reinvestment Act

- 47 individuals will serve 1,733 days (36.87 average per day)
- There were 59 custodial sanctions this quarter, serving a total of 1,733 days. (29.37 average)



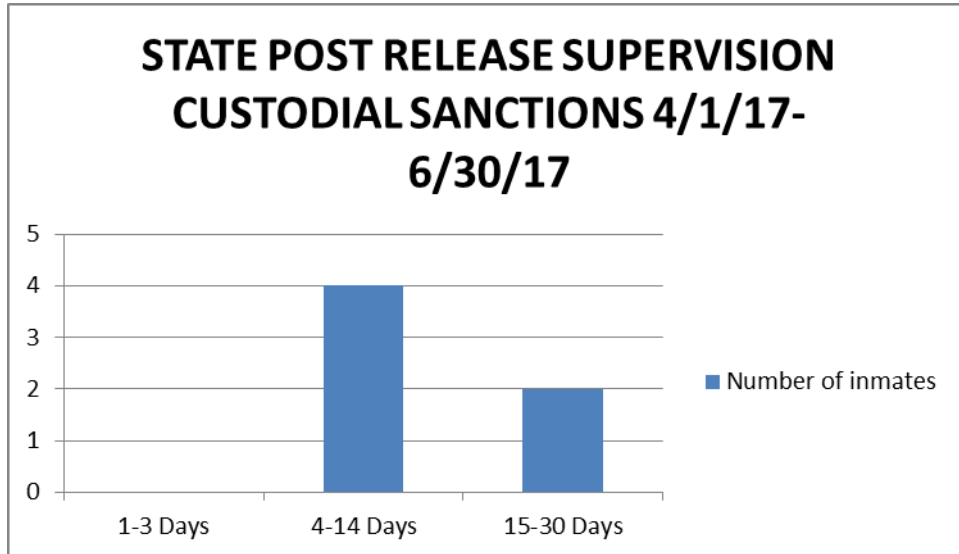
- Lancaster County Department of Corrections tracked offenders who were incarcerated for a “Custodial Sanction.” During the time period beginning 8/31/15 to 6/30/17, there have been 222 custodial sanctions. These offenders served a total of 4,503 days.



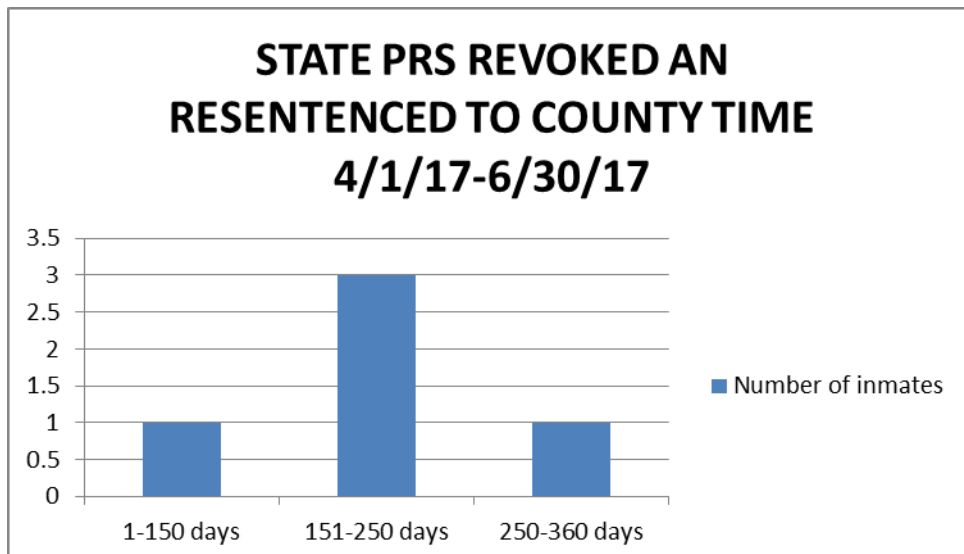
Lancaster County Board of Corrections

August 3, 2017

- Lancaster County Department of Corrections tracked offenders who were incarcerated for violating Post Release Supervision. These 6 inmates were sentenced to a total of 78 days or approximately 13 days per inmate.



- Lancaster County Department of Corrections tracked offenders who were incarcerated for violating Post Release Supervision. These 5 inmates had their Post Release Supervision Revoked and were re-sentenced to County Time. The 5 sentences totaled 974 days (194.8 days) per individual.



Lancaster County Board of Corrections

August 3, 2017

E. Regional Center Waiting Periods

Currently Housed at Regional Center				
	Date Ordered		Date Transferred	Days waiting
1	12/2/2015		1/5/2016	34
2	8/17/2016		10/19/2016	63
3	9/21/2016		12/15/2016	85
4	10/5/2016		1/2/2017	89
5	10/21/2016		1/9/2017	80
6	12/9/2016		3/10/2017	91
7	1/6/2017		4/12/2017	96
8	4/5/2017		4/20/2017	15
9	3/2/2017		5/22/2017	81
10	3/20/2017		6/7/2017	79
11	4/4/2017		6/27/2017	84
12	6/29/2017		7/20/2017	21
			Total Days	818
			Average	68.17
Currently Waiting for Bed				
	Date Ordered			Days Waiting
1	5/3/2017		7/31/2017	89
2	5/22/2017		7/31/2017	70
3	6/5/2017		7/31/2017	56
4	6/15/2017		7/31/2017	46
5	7/14/2017		7/31/2017	17
6	7/18/2017		7/31/2017	13
7	7/27/2017		7/31/2017	4
			Total Days	295
			Average	42.14

Lancaster County Board of Corrections
August 3, 2017

F. Community Hospital Posts

Blue = 1 Hospital Post Green = 2 Hospital Posts Red = 3 Hospital Posts

2017	Sunday	Monday	Tuesday	Wednesday	Thursday	Friday	Saturday
APR							1
	2	3	4	5	6	7	8
	9	10	11	12	13	14	15
	16	17	18	19	20	21	22
	23	24	25	26	27	28	29
MAY	30	1	2	3	4	5	6
	7	8	9	10	11	12	13
	14	15	16	17	18	19	20
	21	22	23	24	25	26	27
	28	29	30	31 I	1 I	2 I	3
JUNE	4	5	6	7	8	9	10
	11	12	13	14	15	16	17 J
	18 J	19	20	21	22 K	23 K	24 L
	25 L	26	27 M	28 M	29	30 N	

G. Felonies Sentenced to Lancaster County

- Felony 3A
 - 15 inmates @ 2,935 days (195.7 average days)
- Felony 4
 - 41 inmates @ 9,274 days (226.2 average days)
- ✓ **Total of 63 inmates will serve 14,264 days (226.4 average days)**

H. Drug Court Remand

- 26 drug court participants will serve 467 days (17.9 average days)

I. Violation of House Arrest

- 7 offenders served 946 days (135.1 average days)

Lancaster County Board of Corrections

August 3, 2017

J. Fiscal Year 2017 Status Report

	2016					2017							AVERAGE TO DATE	TOTAL TO DATE
	JUL	AUG	SEP	OCT	NOV	DEC	JAN	FEB	MAR	APR	MAY	JUN		
Average Daily Population @ADF	652.8	660.6	657.1	645.2	628.5	610.8	607.9	623.3	612.5	608.4	619.7	634.5	630.1	N/A
High for Month	675	684	685	672	660	639	634	641	640	510	649	652	645.1	N/A
Low for Month	637	642	637	623	605	578	573	607	597	483	607	622	600.9	N/A
Total Number of Bookings	845	848	851	806	731	730	794	719	798	774	833	882	800.9	9,611
Felony Arrests	240	233	255	205	210	224	249	228	257	259	240	269	239.1	2,869
Misdemeanor Arrests	481	446	456	466	389	388	416	364	414	386	461	469	428.0	5,136
Felons Sentenced	21	27	17	11	16	14	29	30	34	30	19	30	23.2	278
Misdemeanants Sentenced	48	60	64	48	48	37	58	43	39	40	47	54	48.8	586
Held for Other Jurisdictions	52	81	51	76	65	67	41	53	55	61	66	58	60.5	726
Total Conditionally Released	348	320	342	351	299	288	331	296	309	288	329	352	321.1	3,853
Percent Conditionally Released	41.18%	37.74%	40.62%	43.55%	40.90%	39.45%	41.69%	41.17%	38.72%	37.21%	39.50%	39.91%	40.1%	
Pre-Arrestment Releases	144	109	143	154	111	99	127	122	124	104	128	128	124.4	1,493
Court Disposition Releases	204	211	199	197	188	189	204	174	185	184	201	224	196.7	2,360
Total of Individuals Lodged	497	528	500	455	432	442	463	423	489	486	504	530	479.1	5,749
MEDICAL/MENTAL HEALTH SERVICES														
Referred to Jail Physician	206	244	215	133	231	257	264	252	246	261	223	227	230	2,759
Referred to Mental Health/LRC	4	1	3	1	2	1	1	1	1	2	1	1	2	19
Transferred to Emergency Room	11	14	8	17	17	9	16	5	9	5	10	10	11	131

III. Programming (April-June, 2017)

- Religious (498 Meetings)
 - Bible Study- 147
 - Church Service- 177
 - Discipleship Mentoring- 114
 - 1:1 Religious Counseling - 60
- Substance Abuse Education & 12 Step Programs (105 Meetings)
 - The Bridge Behavioral Health Substance Abuse Education for Men- 24
 - St. Monica's Substance Abuse Education for Women- 11
 - AA Meetings- 48
 - NA Meetings- 22
- Educational Programs (179 classes)
 - GED Classes- 76
 - Lincoln Literacy-12
 - Food Prep Skills- 17

Lancaster County Board of Corrections

August 3, 2017

- Christian Heritage Parenting- 21
- Christian Heritage Within My Reach (Domestic Relationships Ed)- 21
- Released & Restored Job/Life Skills- 20
- Moral Reconciliation Therapy (M.R.T.) - 12
- Transition Planning (82 inmate contacts)
 - V.A. Outreach-60
 - Center Pointe Dual Diagnosis Homeless Outreach- 22
- Work/Court Ordered Release Averages per Month
 - April
 - 11- County Court
 - 12- District Court
 - May
 - 13- County Court
 - 25- District Court
 - June
 - 14- County Court
 - 17- District Court
- Other
 - Income Tax Preparation Assistance-1 inmate
 - TABE (Test of Adult Basic Education)- 12 classes
 - GED Practice/Subject Tests-25, 1 completion
 - Food Handler Permit Testing- 8

IV. Transportation (April-June, 2017)

- Court Appearances
 - County Court
 - 2,042 Video Appearances
 - 632 Physical Appearances
 - District Court
 - 212 Video Appearances
 - 655 Physical Appearances

Lancaster County Board of Corrections

August 3, 2017

- Off-Site Transports
 - State Department of Corrections
 - 87 to Diagnostic and Evaluation
 - 14 to Nebraska Center for Women (York)
 - Medical
 - 41 to Hospital
 - 48 to Clinical Appointments
 - Mental Health
 - 25 to Lincoln Regional Center
 - 8 to Crisis Center

V. Work Crews (April-June, 2017)

- Lancaster County Event Center
 - A crew of six inmates were utilized 27 times at the Event Center, cleaning horse stalls, completing odd jobs and setting up for various events.
- Adult Detention Facility (ADF) or Yard Crews
 - Crews of three inmates worked 32 days around the facility maintaining grounds.
 - Trimming grass, mowing small areas, picking up trash, pulling weeds, pruning shrubs, cleaning the warehouse and showers along with other miscellaneous jobs.
 - Inmate crews also moved & spread mulch across the ADF grounds, consisting of 400 cubic yards or 4 semi trailer loads.
 - Crews also moved gym/weight equipment into ADF training area.
- Election Commissioner
 - Six inmates were assigned for one day loading & unloading ballot boxes
- Road Crew
 - Four inmates picked up trash along the county roads on two occasions, covering 9.3 miles and collecting approximately 22 bags of trash.
- Inmate crews of 4-8 individuals also assisted with seven moves throughout the county including Probation, Veteran Services, Community Corrections, and Risk Management.
 - Moved boxes, desks, filing cabinets, and small furniture

Lancaster County Board of Corrections
August 3, 2017

VI. Training (April-June, 2017)

- Initial Orientation
 - 10 full time Correctional Officers (80 hours)
 - 1 on-call officer attended this training (80 hours)
 - 2 medical/nursing staff (38 hours)
 - 1 records staff (12 hours)
- In-Service Training
 - 1 officer completed field training program (18 hours)
 - 155 full time staff attended Direct Supervision class (24 hours)
 - 3 officers completed the field training program (32 hours)
 - 11 officers completed on the job training (80 hours)
 - 14 officers completed Jail Academy training (80 hours)
 - 1 CBM employee attended Use of Force make up class (3 hours)
 - 1 CBM staff member attend a make up class for suicide awareness (6 hours)
 - 5 staff members attended a cultural diversity class (2 hours)
- Other Training
 - 2 officers took an online class, Objective Jail Classification (3 hours)
 - 3 staff members attend the NE Jail Standards conference in Kearney (16 hours)
 - 1 staff member attended Jail Managers training in Lexington, NE (40 hours)
 - 7 staff attended a hands on class on how to operate a skid loader. (2 hours)
 - 17 staff members attended NIC Strategic Planning, Day 1 (8 hours)
 - 11 staff members attended day 2 of NIC Strategic Planning (8 hours)
 - 2 employees attended Continuum's Difficult Conversations class (2 hours)
 - 5 employees attended Continuum's Forgiveness in the Work Place class (2 hours)
 - 9 staff members attend Jail Managers Training in Lexington, NE (40 hours)

Lancaster County Board of Corrections
August 3, 2017

**MINUTES
BOARD OF CORRECTIONS MEETING
COUNTY-CITY BUILDING
ROOM 113 - BILL LUXFORD STUDIO
THURSDAY, AUGUST 3, 2017
8:30 A.M.**

Board Members Present: Deb Schorr, Chair
Bill Avery, Vice Chair
Roma Amundson
Todd Wiltgen

Board Members Absent: Jennifer Brinkman

Others Present: Brad Johnson, Interim Corrections Director
Kerry Eagan, Chief Administrative Officer
Ann Ames, Deputy Chief Administrative Officer
Ann Taylor, County Clerk's Office

The Chair called the meeting to order at 8:32 a.m.

AGENDA ITEM

1 APPROVAL OF THE MINUTES OF THE APRIL 27, 2017 MEETING

MOTION: Wiltgen moved and Amundson seconded approval of the minutes of the April 27, 2017 meeting. Amundson, Avery, Wiltgen and Schorr voted yes. Brinkman was absent. Motion carried 4-0.

2 POPULATION STATISTICS & CHARTS

Brad Johnson, Corrections Director, discussed the following population statistics and charts (see agenda packet):

A. Average Daily Population (ADP) Comparison

The average daily population (ADP) was 634.2 for the second quarter of 2017 compared to 622.9 for the same period in 2016 (1.8% increase). The facility was at 95.4% of operational capacity of 665 beds for the quarter. Other population figures are as follows: Felony arrests (256.0); Misdemeanor arrests (438.7); Felons sentenced (26.3); Misdemeanors sentenced (47.0); Held for other jurisdictions (61.7); and Percent conditionally released (38.9%).

B. Booking and Lodging Totals

Average bookings were up 5.0% and average lodgings were up 6.4% compared to the same time period last year. Johnson said more individuals are being released on a conditional release and felt the judiciary has been more conscious of population issues since the Justice Council was reinstated and have been more willing to let individuals out on bond. Wiltgen said he does not believe it has been to the detriment of public safety.

C. Pre-Trial and Sentence Conversion Release

While there were no releases for community service this quarter, there were significant increases in pre-trial release and sentence conversion (house arrest) numbers (see graph in agenda packet).

D. Custodial Sanctions/County Reinvestment Act

Since Legislative Bill (LB) 605 went into effect on August 31, 2015, there have been 222 custodial sanctions. LB 605 changed the classification of penalties, punishments, probation and parole provisions, and provisions relating to criminal records and restitution. **NOTE:** Custodial sanctions involve offenders who were sentenced to county time. Upon their release they are placed on supervision and if they re-offend or don't meet the terms of supervision during that period, Probation can sanction them and they are sent to the county jail. Johnson said 47 individuals will serve 1,733 days of custodial sanctions during this quarter and said some custodial sanctions may carry over into the next quarter. He noted the number of days served for custodial sanctions over a year period equates to 30 beds in the jail facility.

Johnson said they are also tracking the number of offenders who are incarcerated for violating State post-release supervision. **NOTE:** This involves offenders who had been sentenced to state time. Prior to LB 605, they would have been supervised by Parole and would have been returned to prison for violating parole. Now they are supervised by Probation and are sent to the county jail if they violate terms of supervision. Johnson said 6 offenders were incarcerated this quarter for violating post release supervision for a total of 78 days. Five inmates had their post release supervision revoked and were re-sentenced to county time. Those five sentences totaled 974 days. Wiltgen inquired about their initial offenses. Johnson said he didn't have that information with him.

Schorr asked Johnson to present this information to the Justice Council and the Nebraska Association of County Officials (NACO) and said the County needs to share this information with the Legislature as well. She also pointed out the County is

not being reimbursed by the State for the associated costs other than a one-time award of \$74,000 to improve programming.

Schorr inquired about Douglas County's numbers. Johnson said he was told Douglas County's judges are not imposing custodial sanctions. He said he will check on their post release supervision revocation and re-sentenced numbers.

Wiltgen asked that the LB 605 population be added to the ADP Comparison graph (see Item 2A).

E. Regional Center Waiting Periods

Johnson reported on the number of individuals who were housed at the Lincoln Regional Center (LRC) or were in the jail waiting for beds at LRC as of July 31, 2017 (see agenda packet). **NOTE:** These are individuals who have been found incompetent to stand trial and are waiting for their competency to be re-established. He indicated the majority are being housed in the infirmary and the special needs unit. Wiltgen asked Johnson to try to determine how much it costs a day for the County to house that population.

Kerry Eagan, Chief Administrative Officer, questioned whether a civil commitment might be a better way to go if the charges are for low-level misdemeanors.

Wiltgen asked if there are other options besides LRC that can re-establish competency. Johnson explained that the judges order these inmates to LRC.

Avery asked whether these individuals are receiving treatment in the jail. Johnson said the jail has a psychiatrist who comes in on a weekly basis and three licensed mental health practitioners (LMHP's) available. He said they try to provide what is needed but some of the individuals are seriously mentally ill and will not participate in treatment.

F. Community Hospital Posts

Johnson discussed a chart detailing community hospital posts. **NOTE:** The facility must staff each offender who is hospitalized on a 24/7 basis and two staff members must accompany any offender that is having a procedure.

G. Felonies Sentenced to Lancaster County

See agenda packet.

H. Drug Court Remand

See agenda packet.

I. Violation of House Arrest

See agenda packet.

J. Fiscal Year 2017 Monthly Status Report

See agenda packet.

3 PROGRAMMING

See agenda packet.

4 TRANSPORTATION

See agenda packet.

5 WORK CREWS

See agenda packet.

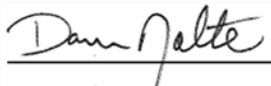
6 TRAINING

See agenda packet.

Johnson also reported that the Corrections' website has been updated and there is now an inmate lookup feature.

7 ADJOURNMENT

MOTION: Amundson moved and Wiltgen seconded to adjourn the meeting at 9:03 a.m. Avery, Wiltgen, Amundson and Schorr voted yes. Brinkman was absent. Motion carried 4-0.



Dan Nolte
Lancaster County Clerk

