

Lancaster County Board of Corrections

January 26, 2017

LANCASTER COUNTY DEPARTMENT OF CORRECTIONS

:

Lancaster County Board of Corrections
January 26, 2017

Agenda

Thursday, January 26, 2017

9:00 a.m.

- I. Approval of the October 27, 2016 meeting's minutes
 - a. October 27, 2016 minutes

- II. Population Statistics & Charts
 - a. Average Daily Population Comparison
 - b. Booking and Lodging Totals
 - c. Pre-Trial and Sentence Conversion Release
 - d. Custodial Sanctions/County Reinvestment Act
 - e. Community Hospital Posts-2016
 - f. Felonies Sentenced to Lancaster County
 - g. Drug Court Remand
 - h. Violation of House Arrest
 - i. Calendar Year 2016 Monthly Status Report

- III. Programming

- IV. Transportation

- V. Work Crews

- VI. Training

Lancaster County Board of Corrections
January 26, 2017

**MINUTES
BOARD OF CORRECTIONS MEETING
COUNTY-CITY BUILDING
ROOM 113 - BILL LUXFORD STUDIO
THURSDAY, OCTOBER 27, 2016
8:30 A.M.**

Board Members Present: Deb Schorr, Chair
Larry Hudkins, Vice Chair
Roma Amundson
Todd Wiltgen

Board Members Absent: Bill Avery

Others Present: Brad Johnson, Interim Corrections Director
Ken Prey, Interim Jail Administrator
Kerry Eagan, Chief Administrative Officer
Ann Taylor, County Clerk's Office

The Vice Chair called the meeting to order at 8:34 a.m.

AGENDA ITEM

1 APPROVAL OF THE MINUTES OF THE JULY 21, 2016 MEETING

MOTION: Amundson moved and Hudkins seconded approval of the minutes of the July 21, 2016 meeting. Hudkins, Wiltgen and Amundson voted yes. Avery and Schorr were absent. Motion carried 3-0.

The Chair arrived at the meeting at 8:35 a.m. and assumed direction of the meeting.

2 POPULATION STATISTICS

Brad Johnson, Interim Corrections Director, discussed the following population statistics (see agenda packet):

A. Average Daily Population Comparison

The average daily population was 656.8 compared to 564.4 for the same period in 2015 (a 16.4% increase). Johnson said the facility is at 98.8% of operational capacity of 665 beds.

Lancaster County Board of Corrections

January 26, 2017

NOTE: The total capacity is 786. Operational capacity is based on staffing and classifications. Population averages are as follows: Felony arrests (242.7);

Misdemeanor arrests (461.0); Felons sentenced (21.7); Misdemeanors sentenced (57.3); Held for other jurisdictions (61.3); and Percent conditionally released (39.8).

B. Booking and Lodging Totals

Average bookings were up by 6.6% and average lodgings were down 14.1%, compared to the same time period last year.

C. Pre-Trial and Sentence Conversion Release

Johnson said the pre-trial release and sentence conversion numbers remained steady compared to last year.

D. Custodial Sanctions/County Reinvestment Act

Johnson said he reviewed data on inmate admissions from 2012 until present to see if there were any longer term patterns. He also looked at the number of custodial sanctions since August, 2015 when Legislative Bill (LB) 605, which changed classification of penalties, punishments, probation and parole provisions, and provisions relating to criminal records and restitution, went into effect.

Wiltgen asked what classification inmates with custodial sanctions fit into. Johnson said he will need to break it out and will report back with those findings.

Johnson said he anticipates there will be an increase in the number of custodial sanctions this year, noting the County hasn't seen the impact of post-release supervision from the state prisons as a result of LB 605. **NOTE:** Individuals who are released from prison and violate terms of their probation will be sent to county jail with sanctions under terms of the legislation.

E. Total Inmate Admissions

Johnson reported that the number of admissions has decreased.

F. Average Number of Days in Custody

Johnson said the average number of days in custody has increased.

Lancaster County Board of Corrections
January 26, 2017

Schorr asked whether appointing an additional district court judge could help speed up the process. Johnson said the County Attorney feels he needs another attorney on staff to help get offenders through the system quicker, adding the Public Defender may make the same argument.

G. Felons Incarcerated 30 Days or More/Awaiting Disposition

See agenda packet.

H. Community Hospital Posts (2016)

Johnson reviewed a chart detailing community hospital posts, noting the facility must staff each offender who is hospitalized on a 24/7 basis. Ken Prey, Interim Jail Administrator, added that much of that staffing involves overtime.

I. Felonies Sentenced to Lancaster County

See agenda packet.

J. Drug Court Remand

See agenda packet.

K. Violation of House Arrest

See agenda packet.

3 OTHER BUSINESS

Johnson reported that Adult Probation staff will begin conducting Moral Reconciliation Therapy (MRT) classes in November with inmates in the jail's custody. **NOTE:** MRT is a systematic treatment strategy that seeks to decrease recidivism among criminal offenders by increasing moral reasoning.

4 PROGRAMMING

See agenda packet.

5 TRANSPORTATION

Lancaster County Board of Corrections
January 26, 2017

See agenda packet.

6 WORK CREWS

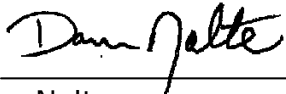
See agenda packet.

7 TRAINING

Amundson noted General Educational Development (GED) classes are offered and inquired about the number of offenders that receive their GED while incarcerated in the jail. Johnson said he did not have that number available, noting any that are unable to complete the classes while incarcerated can finish once they are released. Schorr said there are several places in the community that have funds available to assist them with the cost.

8 ADJOURNMENT

MOTION: Amundson moved and Wiltgen seconded to adjourn the meeting at 8:59 a.m. Amundson, Schorr, Hudkins and Wiltgen voted yes. Avery was absent. Motion carried 4-0.



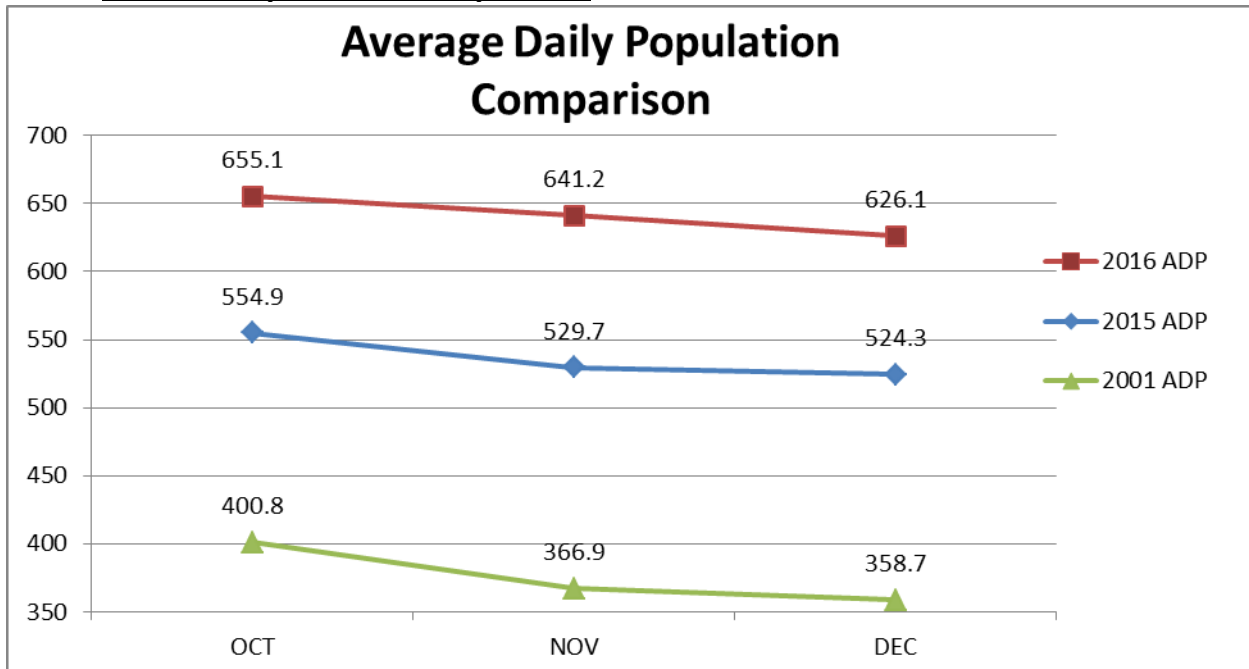
Dan Nolte
Lancaster County Clerk



Lancaster County Board of Corrections
January 26, 2017

II. Population Statistics (October-December, 2016)

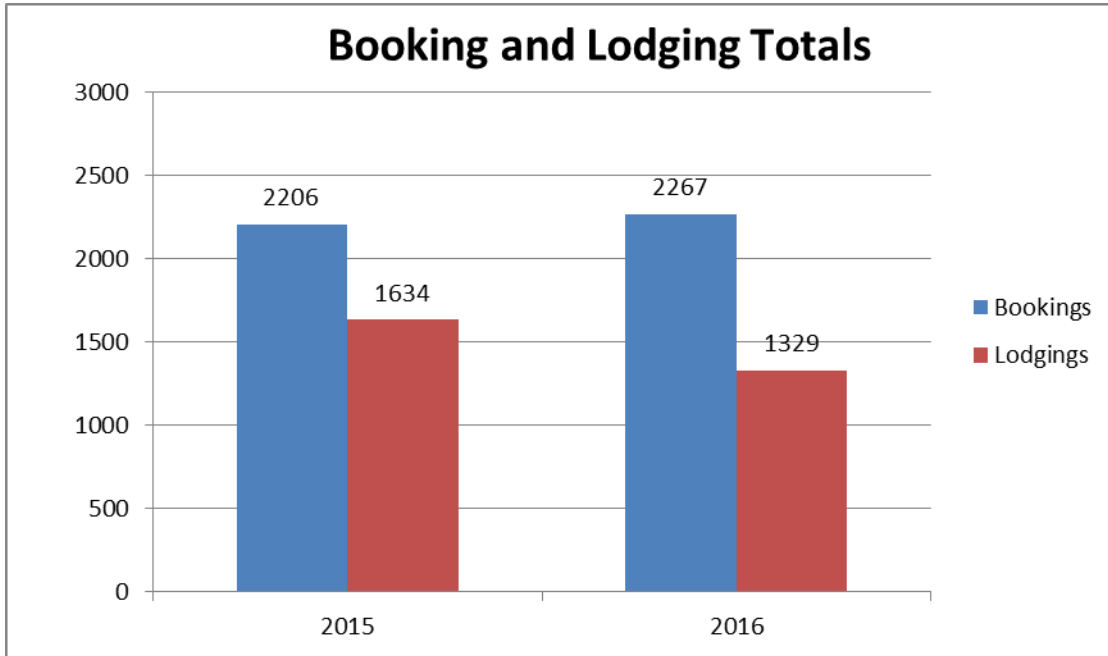
A. ADP Population Comparison



- The average daily population (ADP) for this period of 2016 was 640.8 detainees compared to 536.3 for the same period in 2015. This is a 19.5% increase and a 70.7% increase when compared to 2001.
- This period ADP consumed 96.4 % of the department's operational capacity of 665.
- Other population averages:
 - Felony Arrests-213.0
 - Misdemeanor Arrests-414.3
 - Felons Sentenced-13.7
 - Misdemeanors Sentenced-44.3
 - Held for other Jurisdictions-69.3
 - Percent Conditionally Released-41.3%

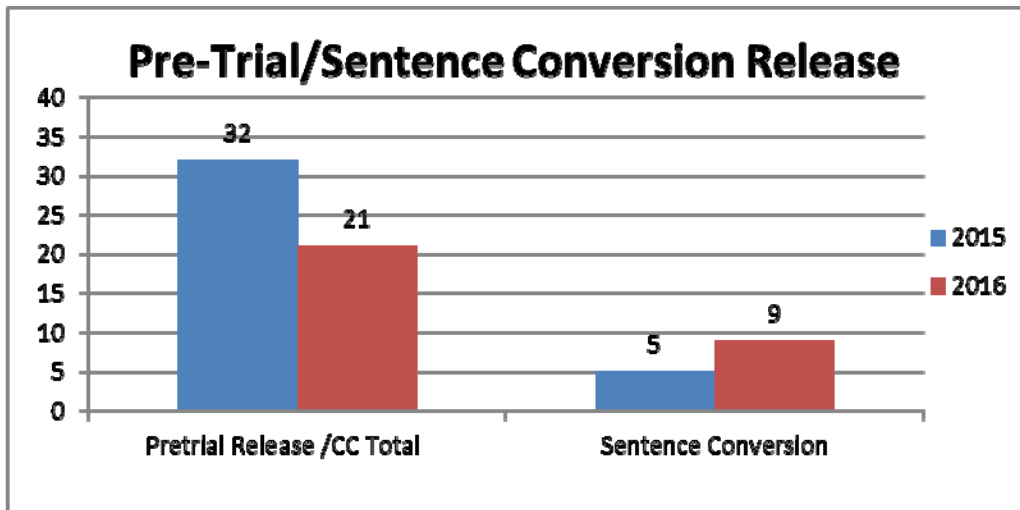
Lancaster County Board of Corrections
January 26, 2017

B. Booking & Lodging Totals



- Average bookings were up +2.8% compared to same time period last year.
- Average lodgings were down -18.7% compared to same time period last year.

C. Pre-Trial/Sentence Conversion Release

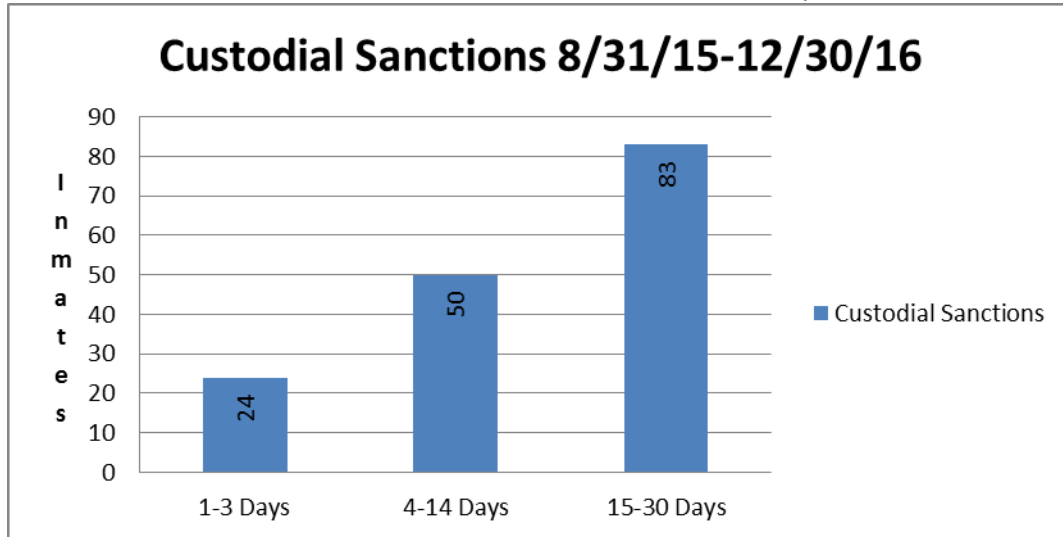


Lancaster County Board of Corrections

January 26, 2017

D. Custodial Sanctions/County Reinvestment Act

- 27 Probationers will serve 509 days (18.86 days average per inmate)
- Lancaster County Department of Corrections tracked offenders who were incarcerated for a “Custodial Sanction.” During the time period beginning 8/31/15 to 12/30/16, there have been 157 custodial sanctions. These offenders served a total of 2,153 days.



E. Community Hospital Posts-2016

Blue = 1 Hospital Post Green = 2 Hospital Posts Red = 3 Hospital Posts

2016	Sunday	Monday	Tuesday	Wednesday	Thursday	Friday	Saturday
							1
	2	3	4	5	6	7	8 AA
	9 AA	10	11	12	13	14	15
OCT	16	17 BB	18 BB CC	19 CC DD	20 CC DD	21	22
	23	24	25	26	27	28	29

Lancaster County Board of Corrections

January 26, 2017

	30	31	1	2 EE	3 EE	4 EE	5
	6	7 FF	8 FF	9 FF GG	10 FF GG	11 FF GG HH	12 HH
NOV	13 HH	14 HH	15 HH	16	17	18	19
	20	21	22	23	24	25	26
	27	28	29	30	1	2	3
	4	5	6	7	8	9	10
DEC	11	12	13	14	15	16	17
	18	19	20	21	22 II	23 II	24 II
	25 II JJ	26 II JJ	27 II JJ	28 II JJ	29 II JJ	30 II JJ	31 II JJ

F. Felonies Sentenced to Lancaster County

- Felony 3A
 - 9 inmates @ 1,680 days (186.7 average days)
- Felony 4
 - 17 inmates @ 3,792 days (223.1 average days)
- ✓ **Total of 26 inmates will serve 5,502 days (211.6 average days)**

Lancaster County Board of Corrections

January 26, 2017

G. Drug Court Remand

- 20 drug court participants will serve 211 days (10.6 average days)

H. Violation of House Arrest

- 11 offenders served 214 days (19.5 average days)

I. Calendar Year 2016 Status Report

CALENDAR YEAR 2016														AVERAGE	TOTAL
	JAN	FEB	MAR	APR	MAY	JUN	JUL	AUG	SEPT	OCT	NOV	DEC		TO DATE	TO DATE
ADULT DETENTION FACILITY															
Average Daily Population @ ADF	528.2	550.7	555.7	586.4	611.1	639.4	652.8	660.6	657.1	645.2	628.2	610.8		610.5	N/A
High for Month	561	573	580	603	652	664	675	684	685	672	660	639		637.3	N/A
Low for Month	503	516	523	550	585	613	637	642	637	623	605	578		584.3	N/A
Total Number of Bookings	829	754	834	802	804	764	845	848	851	806	731	730		799.8	9598
New Bookings	171	164	203	208	195	157	218	206	203	256	182	182		195.4	2345
Felony Arrests	230	227	242	249	240	212	240	233	255	205	210	224		230.6	2767
Misdemeanor Arrests	465	391	434	424	425	434	481	446	456	466	389	388		433.3	5199
Domestic Violence Arrests	59	69	59	66	66	62	80	68	53	66	52	72		64.3	772
DWI Arrests	49	44	57	40	48	33	43	43	55	47	33	47		44.9	539
Felons Sentenced	24	18	22	18	22	16	21	27	17	11	16	14		18.8	226
Misdemeanants Sentenced	70	56	72	56	71	45	48	60	64	48	48	37		56.3	675
Held for Other Jurisdictions	40	62	64	62	46	58	52	81	51	76	65	67		60.3	724
Total Conditionally Released	226	180	342	316	323	302	348	320	342	351	299	288		303.1	3637
Percent Conditionally Released	30.04%	23.87%	41.01%	39.40%	40.17%	39.53%	41.18%	37.74%	40.62%	43.55%	40.90%	39.45%		38.12%	N/A
Pre-Arrestment Releases	130	104	127	127	124	127	144	109	143	154	111	99		124.9	1499
Court Disposition Releases	96	76	215	189	199	175	204	211	199	197	188	189		178.2	2138
Total of Individuals Lodged	609	574	492	486	481	462	497	528	500	455	432	442		496.5	5958
MEDICAL/MENTAL HEALTH SERVICES															
Referred to Jail Physician	90	70	129	186	172	181	206	244	215	133	231	257		176.2	2114
Referred to Mental Health/LRC	1	1	1	0	1	0	4	1	3	1	2	1		1.3	16
Transferred to Emergency Room	8	6	8	8	9	8	11	14	8	17	17	9		10.3	123

III. Programming (October-December, 2016)

- Religious (530 Meetings)
 - Bible Study- 141
 - Church Service- 202
 - Discipleship Mentoring- 101
 - 1:1 Religious Counseling -86

Lancaster County Board of Corrections

January 26, 2017

- Substance Abuse Education & 12 Step Programs (103 Meetings)
 - The Bridge Behavioral Health Substance Abuse Education for Men- 13
 - St. Monica's Substance Abuse Education for Women- 11
 - AA Meetings- 57
 - NA Meetings- 22
- Educational Programs (148 classes)
 - GED Classes-65
 - Lincoln Literacy- 10
 - Food Prep Skills- 9
 - Christian Heritage Parenting- 21
 - Christian Heritage Within My Reach (Domestic Relationships Ed)- 21
 - Released & Restored Job/Life Skills- 15
 - Moral Reconciliation Therapy (M.R.T.) -7
- Transition Planning (88 inmate contacts)
 - V.A. Outreach- 71
 - Center Pointe Dual Diagnosis Homeless Outreach- 17
- Work/Court Ordered Release Averages per Month
 - October
 - 9 - County Court
 - 21 - District Court
 - November
 - 8- County Court
 - 19 - District Court
 - December
 - 8 - County Court
 - 21 - District Court
- Other
 - Turning Pages Book Club for Women -4 classes
 - TABE (Test of Adult Basic Education)-9 classes

Lancaster County Board of Corrections
January 26, 2017

- GED Practice/Subject Tests- 26
- Food Handler Permit Testing- 6

IV. Transportation (October-December, 2016)

- Court Appearances
 - County Court
 - 1,862 Video Appearances
 - 676 Physical Appearances
 - District Court
 - 168 Video Appearances
 - 659 Physical Appearances
- Off-Site Transports
 - State Department of Corrections
 - 79 to Diagnostic and Evaluation
 - 11 to Nebraska Center for Women (York)
 - Medical
 - 48 to Hospital
 - 22 to Clinical Appointments
 - Mental Health
 - 30 to Lincoln Regional Center
 - 11 to Crisis Center

V. Work Crews (October-December, 2016)

- Lancaster County Event Center
 - A crew of 6 inmates were used 12 days for cleaning horse stalls & setting up for various events along with other odd jobs.

Lancaster County Board of Corrections

January 26, 2017

- County Engineer Crew-
 - Three inmates were assigned for 34 days to work at the County Engineer's Department cleaning the shop, doing yard work & assisting with general every day duties.
- Adult Detention Facility (ADF)
 - Crews of 3 inmates worked 52 days assisted in maintaining ADF grounds including:
 - Trimming grass, mowing small areas, picking up trash, pulling weeds, pruning shrubs, cleaning the warehouse/showers along with miscellaneous work in non-detention area of the jail.
- Election Commissioner
 - Six inmates were assigned one day loading & unloading ballot boxes.

VI. Training (October-December, 2016)

- Initial Orientation
 - 12 full time Correctional Officers (80 hours)
 - 2 kitchen staff (35 hours)
 - 2 medical staff (32 hours)
 - 1 Keefe staff (34 hours)
 - 9 officers attended our training academy (80 hours)
- In-Service Training
 - 48 staff members attended non-security use of force class (3 hours)
 - 1 officer attended a makeup Direct Supervision class (8 hours)
 - 3 officers completed the field training program (32 hours)
 - 10 staff members completed on the job training (80 hours)
 - 16 staff members attended Emergency Procedures make up training (8 hours)
 - 173 officers attended our department's "Use of Force" in service class (8 hours)

Lancaster County Board of Corrections

January 26, 2017

- 8 staff members attended “Federal Mediation/Labor Management” training class (8 hours)
- Other Training
 - 9 employees attended the Continuum class, “Supervisory Drug and Alcohol Training “ (4 hours)
 - 2 employees attended Continuum’s, “Why People Resist Change” (2 hours)
 - 1 staff member attended an electrical instructors class (12 hours)
 - 3 staff members attended the county sponsored, Government Financial Professional Training. (8 hours)

**MINUTES
BOARD OF CORRECTIONS MEETING
COUNTY-CITY BUILDING
ROOM 113 - BILL LUXFORD STUDIO
THURSDAY, JANUARY 26, 2017
9:00 A.M.**

Board Members Present: Deb Schorr, Chair
Bill Avery, Vice Chair
Roma Amundson
Todd Wiltgen
Jennifer Brinkman

Others Present: Brad Johnson, Interim Corrections Director
Ken Prey, Jail Administrator
Brenda Fisher, Programs Manager
Kerry Eagan, Chief Administrative Officer
Ann Taylor, County Clerk's Office

The Chair called the meeting to order at 9:01 a.m.

AGENDA ITEM

1 APPROVAL OF THE MINUTES OF THE OCTOBER 27, 2016 MEETING

MOTION: Amundson moved and Avery seconded approval of the minutes of the October 27, 2016 meeting. Amundson, Avery, Wiltgen, Brinkman and Schorr voted yes. Motion carried 5-0.

2 POPULATION STATISTICS & CHARTS

Brad Johnson, Corrections Director, discussed the following population statistics and charts (see agenda packet):

A. Average Daily Population Comparison

The average daily population was 640.8 for this period in 2016 compared to 536.3 for the same period in 2015 (a 19.5% increase). The facility is at 96.4% of operational capacity of 665 beds. Population averages are as follows: Felony arrests (213.0); Misdemeanor arrests (414.3); Felons sentenced (13.7); Misdemeanors sentenced (44.3); Held for other jurisdictions (69.3); and Percent conditionally released (41.3).

B. Booking and Lodging Totals

Average bookings were up by 2.8% and average lodgings were down 18.7%, compared to the same time period last year.

C. Pre-Trial and Sentence Conversion Release

There were 21 pre-trial releases in 2016 compared to 32 in 2015 and 9 sentence conversions (house arrests) in 2016 compared to 5 in 2015.

D. Custodial Sanctions/County Reinvestment Act

Johnson said custodial sanctions are related to implementation of 2015's Legislative Bill (LB) 605, which changed classification of penalties, punishments, probation and parole provisions, and provisions relating to criminal records and restitution). There have been a total of 157 custodial sanction incidents for the time period of August 31, 2015 to December 30, 2016 (24 served 1-3 days, 50 served 4-14 days, and 83 served 15-30 days). He said these offenders served a total of 2,153 days. **NOTE:** Johnson presented additional information following the meeting that showed 65 individuals accounted for the 157 separate sanction periods (Exhibit A).

E. Community Hospital Posts (2016)

Johnson discussed a chart detailing community hospital posts. **NOTE:** The facility must staff each offender who is hospitalized on a 24/7 basis and two staff members must accompany any offender that is having a procedure.

F. Felonies Sentenced to Lancaster County

Nine Felony 3A inmates served a total of 1,680 days (186.7 average days) and 17 Felony 4 inmates served 3,792 days (223.1 average days).

G. Drug Court Remand

20 Drug Court participants served 211 days (10.6 average days).

H. Violation of House Arrest

11 offenders served 214 days (19.5 average days).

I. Calendar Year 2016 Monthly Status Report

See agenda packet.

3 PROGRAMMING

Brenda Fisher, Programs Manager, discussed some of the programming offered. She noted there are a large number of religious volunteers and said some come into the various pods more than once a week. She said the substance abuse education programs are provided by agencies and the presenters typically come in once or twice a week on a scheduled format unless it is a 12-Step Program.

4 TRANSPORTATION

See agenda packet.

5 WORK CREWS

See agenda packet.

6 TRAINING

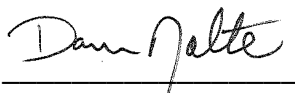
Schorr asked Johnson whether he has any legislative concerns. Johnson cited LB 145 (Provide for a hearing to determine financial ability to pay fines and costs and traffic citations and provide for community service) which is intended to reduce the number of individuals who sit in jail on fines. He said he understands the intent of the bill but is not sure how the courts will react.

Wiltgen said he was asked at a meeting this week why the County is not utilizing out-of-county housing, noting some counties are charging rates less than \$100 per day. Johnson said the County may have to explore that option if it reaches a point where it no longer has sufficient space to house its inmates. He said many of the other facilities are nearing capacity as well so it may be difficult to find much space nearby. Transportation costs and programming were also mentioned as issues to consider.

Avery exited the meeting at 9:23 a.m.

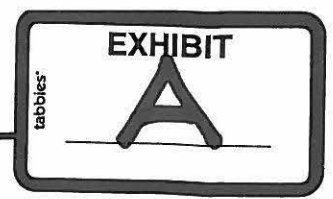
7 ADJOURNMENT

MOTION: Amundson moved and Wiltgen seconded to adjourn the meeting at 9:24 a.m. Wiltgen, Brinkman, Amundson and Schorr voted yes. Avery was absent. Motion carried 4-0.



Dan Nolte
Lancaster County Clerk





Ann C. Taylor

From: Minette M. Genuchi
Sent: Monday, January 30, 2017 7:43 AM
To: Ann C. Taylor
Subject: FW: Board of Corrections (2).docx
Attachments: Board of Corrections (2).docx

From: Bradley L. Johnson
Sent: Friday, January 27, 2017 4:32 PM
To: Deb Schorr (debschorr@aol.com); Todd J. Wiltgen; Bill P. Avery; Roma B. Amundson; Jennifer J. Brinkman
Cc: Minette M. Genuchi
Subject: Board of Corrections (2).docx

I have attached the custodial sanctions graph that I presented yesterday with the additional information you asked about.

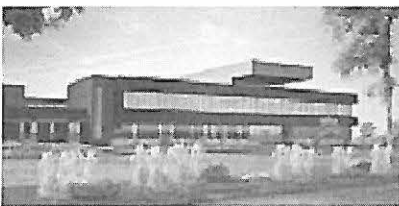
65 individuals accounted for the 157 separate sanction periods.

You will notice within the graph I added a text box that breaks down how many individuals fell within each time period. You will also notice when the time period total individuals are added together they will add up to more than 65. This is because several are accounted for in more than one time period.

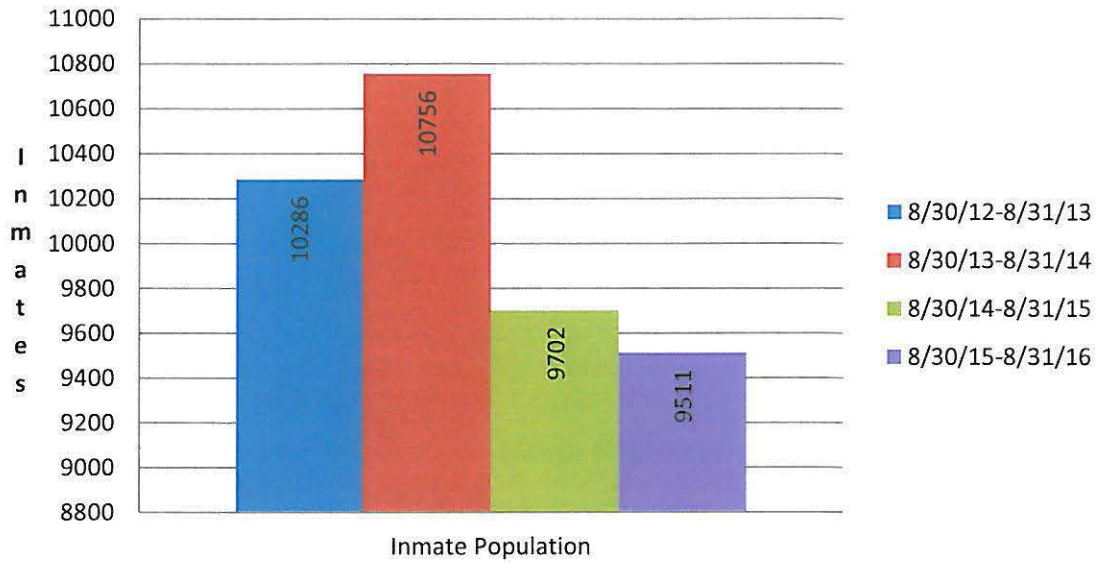
I hope this makes sense to all of you. If not give me a call and I can explain it.

Sincerely,

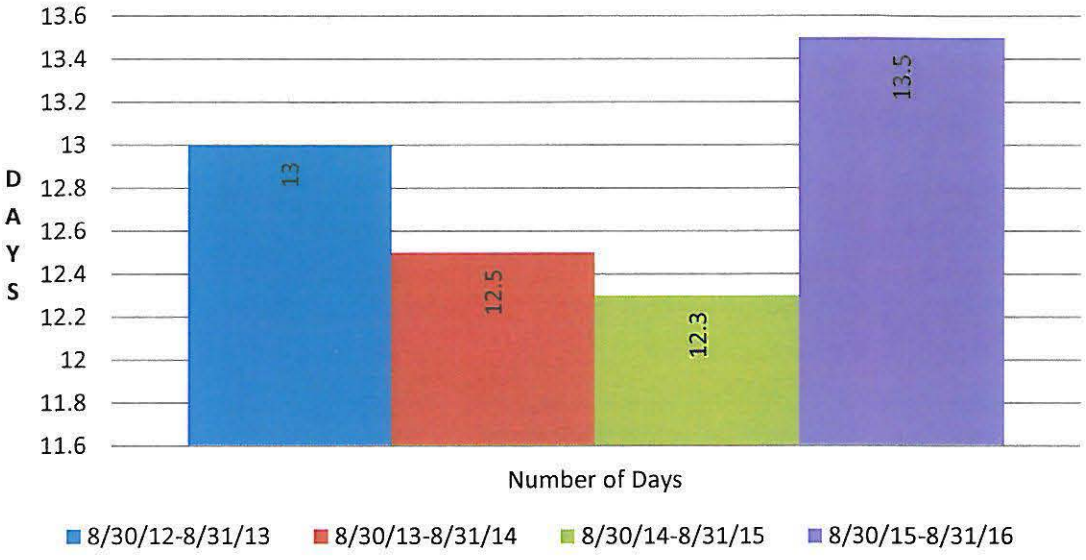
Brad Johnson
Director
Lancaster County Department of Corrections
402-441-1902



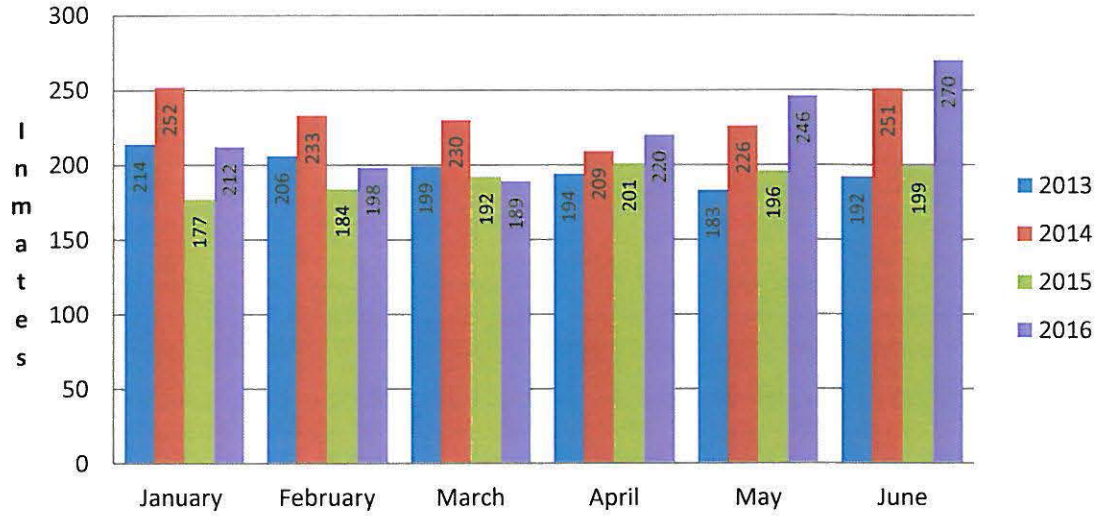
Total Inmate Admissions



Average Number of Days in Custody



Felons Incarcerated 30 Days or More Awaiting Disposition of Case



Lancaster County Department of Corrections tracked offenders who were incarcerated for a "Custodial Sanction." During the time period beginning 8/31/15 to 12/30/16 there has been 157 "Custodial Sanctions." These Offenders served a total of 2,153 days.

