

# Lancaster County Board of Corrections

November 30, 2017

LANCASTER COUNTY DEPARTMENT OF CORRECTIONS

:

Lancaster County Board of Corrections  
November 30, 2017

---

Agenda

Thursday, November 30, 2017

8:30 a.m.

- I. Approval of the August 3, 2017 minutes
  - a. August 3, 2017 minutes
  
- II. Population Statistics & Charts
  - a. Average Daily Population Comparison
  - b. Booking and Lodging Totals
  - c. Pre-Trial and Sentence Conversion Release
  - d. Custodial Sanctions/County Reinvestment Act
  - e. Regional Center Waiting Periods
  - f. Community Hospital Posts
  - g. Felonies Sentenced to Lancaster County
  - h. Drug Court Remand
  - i. Violation of House Arrest
  - j. Fiscal Year 2018 Monthly Status Report
  
- III. Programming
  
- IV. Transportation
  
- V. Work Crews
  
- VI. Training

Lancaster County Board of Corrections  
November 30, 2017

---

**I. Approval of August 3, 2017 Minutes**

**MINUTES  
BOARD OF CORRECTIONS MEETING  
COUNTY-CITY BUILDING  
ROOM 113 - BILL LUXFORD STUDIO  
THURSDAY, AUGUST 3, 2017  
8:30 A.M.**

Board Members Present: Deb Schorr, Chair  
Bill Avery, Vice Chair  
Roma Amundson Todd  
Wiltgen

Board Members Absent: Jennifer Brinkman

Others Present: Brad Johnson, Interim Corrections Director  
Kerry Eagan, Chief Administrative Officer  
Ann Ames, Deputy Chief Administrative Officer  
Ann Taylor, County Clerk's Office

The Chair called the meeting to order at 8:32 a.m.

**AGENDA ITEM**

**1 APPROVAL OF THE MINUTES OF THE APRIL 27, 2017 MEETING**

**MOTION:** Wiltgen moved and Amundson seconded approval of the minutes of the April 27, 2017 meeting. Amundson, Avery, Wiltgen and Schorr voted yes. Brinkman was absent. Motion carried 4-0.

**2 POPULATION STATISTICS & CHARTS**

Brad Johnson, Corrections Director, discussed the following population statistics and charts (see agenda packet):

**A. Average Daily Population (ADP) Comparison**

The average daily population (ADP) was 634.2 for the second quarter of 2017 compared to 622.9 for the same period in 2016 (1.8% increase). The facility was at 95.4% of operational capacity of 665 beds for the quarter. Other population figures are as follows: Felony arrests (256.0); Misdemeanor arrests (438.7); Felons sentenced (26.3);

# Lancaster County Board of Corrections

## November 30, 2017

---

Misdemeanors sentenced (47.0); Held for other jurisdictions (61.7); and Percent conditionally released (38.9%).

### B. Booking and Lodging Totals

Average bookings were up 5.0% and average lodgings were up 6.4% compared to the same time period last year. Johnson said more individuals are being released on a conditional release and felt the judiciary has been more conscious of population issues since the Justice Council was reinstated and have been more willing to let individuals out on bond. Wiltgen said he does not believe it has been to the detriment of public safety.

### C. Pre-Trial and Sentence Conversion Release

While there were no releases for community service this quarter, there were significant increases in pre-trial release and sentence conversion (house arrest) numbers (see graph in agenda packet).

### D. Custodial Sanctions/County Reinvestment Act

Since Legislative Bill (LB) 605 went into effect on August 31, 2015, there have been 222 custodial sanctions. LB 605 changed the classification of penalties, punishments, probation and parole provisions, and provisions relating to criminal records and restitution. **NOTE:** Custodial sanctions involve offenders who were sentenced to county time. Upon their release they are placed on supervision and if they re-offend or don't meet the terms of supervision during that period, Probation can sanction them and they are sent to the county jail. Johnson said 47 individuals will serve 1,733 days of custodial sanctions during this quarter and said some custodial sanctions may carry over into the next quarter. He noted the number of days served for custodial sanctions over a year period equates to 30 beds in the jail facility.

Johnson said they are also tracking the number of offenders who are incarcerated for violating State post-release supervision. **NOTE:** This involves offenders who had been sentenced to state time. Prior to LB 605, they would have been supervised by Parole and would have been returned to prison for violating parole. Now they are supervised by Probation and are sent to the county jail if they violate terms of supervision. Johnson said 6 offenders were incarcerated this quarter for violating post release supervision for a total of 78 days. Five inmates had their post release supervision revoked and were re-sentenced to county time. Those five sentences totaled 974 days. Wiltgen inquired about their initial offenses. Johnson said he didn't have that information with him.



## Lancaster County Board of Corrections

### November 30, 2017

---

Schorr asked Johnson to present this information to the Justice Council and the Nebraska Association of County Officials (NACO) and said the County needs to share this information with the Legislature as well. She also pointed out the County is not being reimbursed by the State for the associated costs other than a one-time award of \$74,000 to improve programming.

Schorr inquired about Douglas County's numbers. Johnson said he was told Douglas County's judges are not imposing custodial sanctions. He said he will check on their post release supervision revocation and re-sentenced numbers.

Wiltgen asked that the LB 605 population be added to the ADP Comparison graph (see Item 2A).

#### E. Regional Center Waiting Periods

Johnson reported on the number of individuals who were housed at the Lincoln Regional Center (LRC) or were in the jail waiting for beds at LRC as of July 31, 2017 (see agenda packet). **NOTE:** These are individuals who have been found incompetent to stand trial and are waiting for their competency to be re-established. He indicated the majority are being housed in the infirmary and the special needs unit. Wiltgen asked Johnson to try to determine how much it costs a day for the County to house that population.

Kerry Eagan, Chief Administrative Officer, questioned whether a civil commitment might be a better way to go if the charges are for low-level misdemeanors.

Wiltgen asked if there are other options besides LRC that can re-establish competency. Johnson explained that the judge orders these inmates to LRC.

Avery asked whether these individuals are receiving treatment in the jail. Johnson said the jail has a psychiatrist who comes in on a weekly basis and three licensed mental health practitioners (LMHP's) available. He said they try to provide what is needed but some of the individuals are seriously mentally ill and will not participate in treatment.

#### F. Community Hospital Posts

Johnson discussed a chart detailing community hospital posts. **NOTE:** The facility must staff each offender who is hospitalized on a 24/7 basis and two staff members must accompany any offender that is having a procedure.

#### G. Felonies Sentenced to Lancaster County

See agenda packet.

Lancaster County Board of Corrections  
November 30, 2017

---

H. Drug Court Remand

See agenda packet.

I. Violation of House Arrest

See agenda packet.

J. Fiscal Year 2017 Monthly Status Report

See agenda packet.

**3 PROGRAMMING**

See agenda packet.

**4 TRANSPORTATION**

See agenda packet.

**5 WORK CREWS**

See agenda packet.

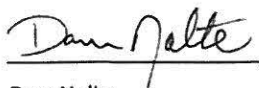
**6 TRAINING**

See agenda packet.

Johnson also reported that the Corrections' website has been updated and there is now an inmate lookup feature.

**7 ADJOURNMENT**

**MOTION:** Amundson moved and Wiltgen seconded to adjourn the meeting at 9:03 a.m. Avery, Wiltgen, Amundson and Schorr voted yes. Brinkman was absent. Motion carried 4-0.



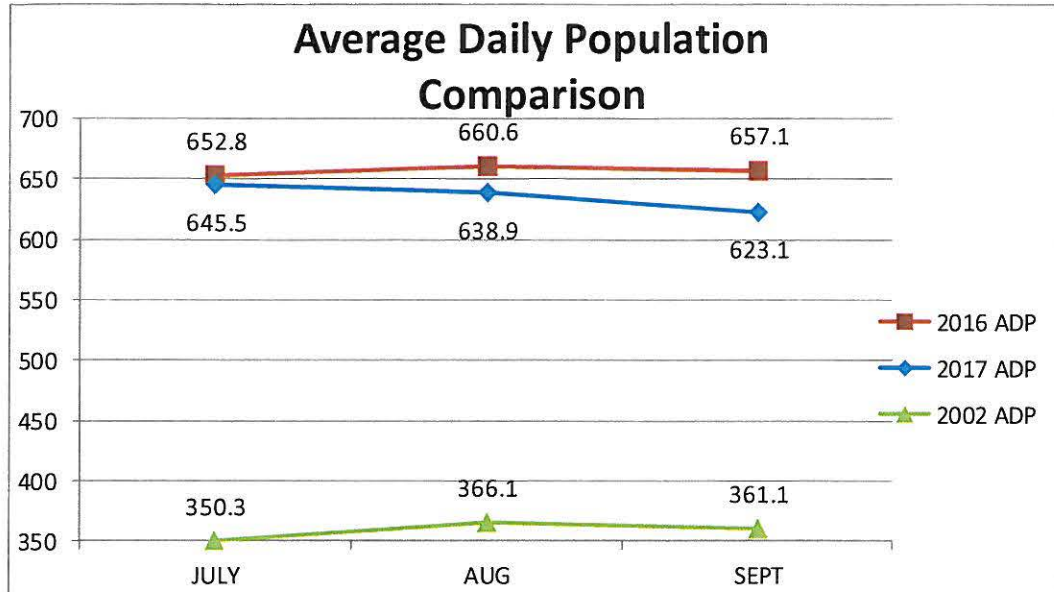
Dan Nolte  
Lancaster County Clerk



Lancaster County Board of Corrections  
November 30, 2017

**II. Population Statistics (July-September, 2017)**

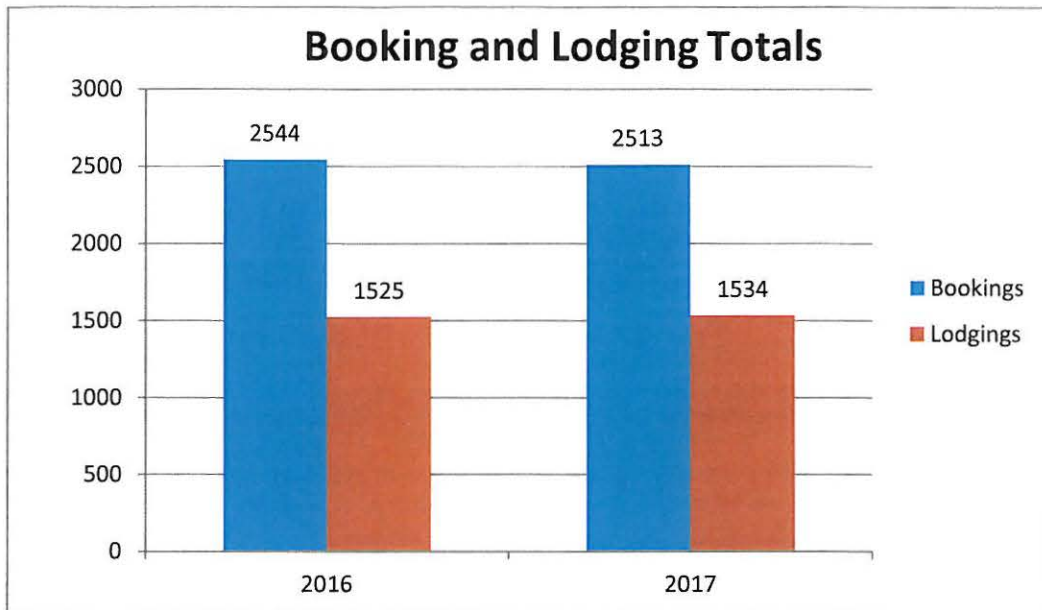
**A. ADP Population Comparison**



- The average daily population (ADP) for this period of 2017 was 635.8 detainees compared to 656.8 for the same period in 2016. This is a 3.2% decrease and a 77% increase when compared to 2002.
- This period ADP consumed 95.6 % of the department's operational capacity of 665.
- Other population averages:
  - Felony Arrests-260.7
  - Misdemeanor Arrests-438.0
  - Felons Sentenced-27.0
  - Misdemeanors Sentenced-49.0
  - Held for other Jurisdictions-62.3
  - Percent Conditionally Released-39.0%

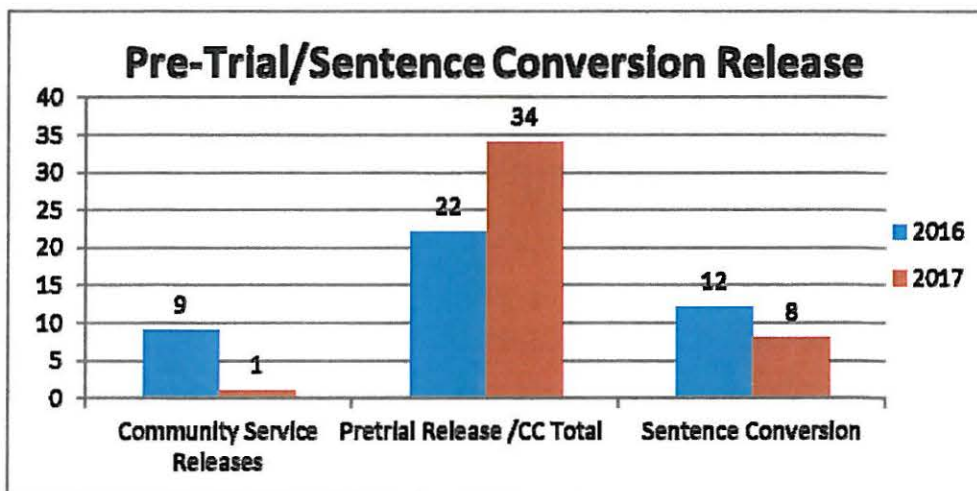
Lancaster County Board of Corrections  
November 30, 2017

**B. Booking & Lodging Totals**



- Average bookings were down 1.2% compared to same time period last year.
- Average lodgings were up .6% compared to same time period last year.

**C. Pre-Trial/Sentence Conversion Release**



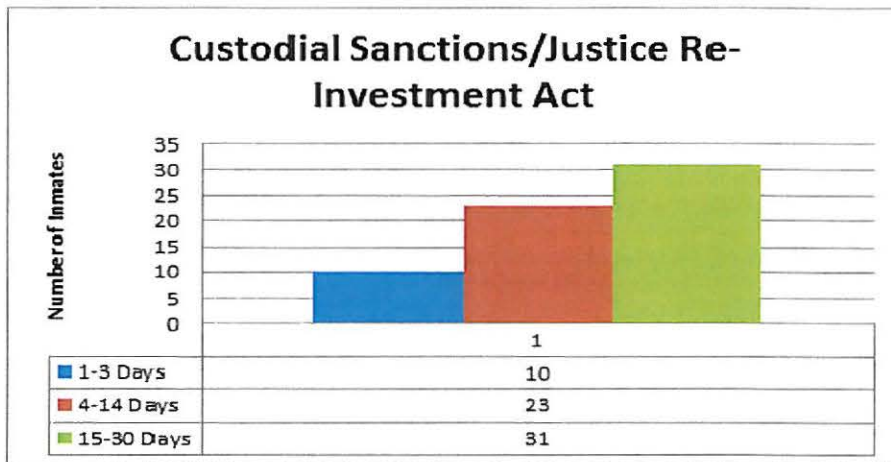


## Lancaster County Board of Corrections November 30, 2017

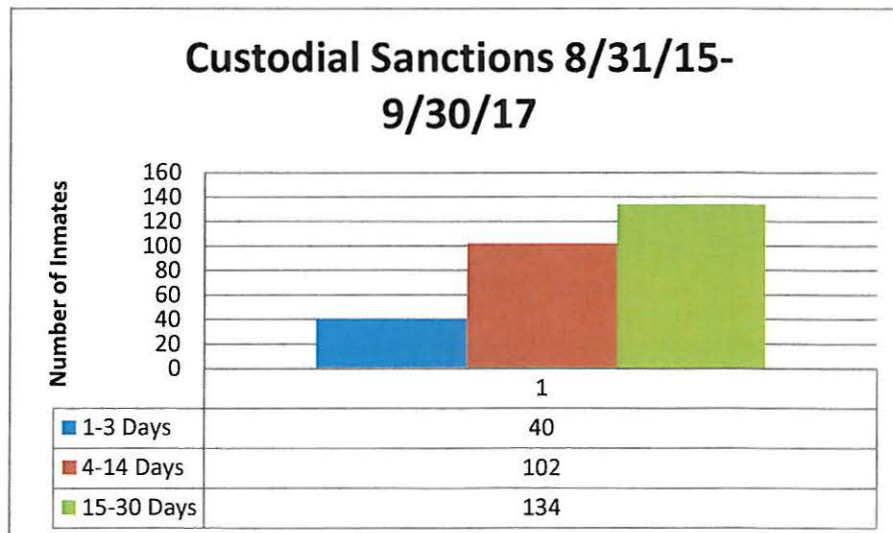
---

### D. Custodial Sanctions/County Reinvestment Act

- 51 individuals will serve 1,085 days (21.28 average per day)
- There were 64 custodial sanctions this quarter, serving 1,085 total days. (16.96 average per day)

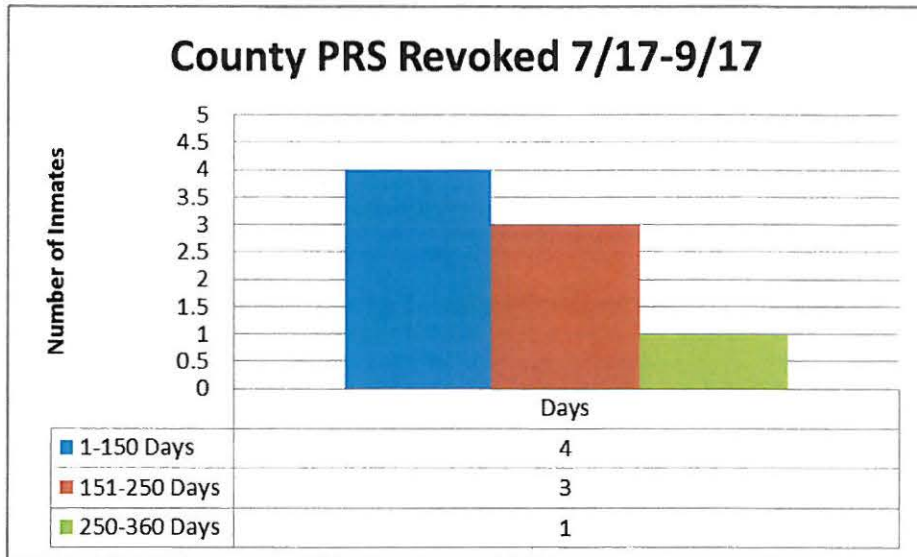


- Lancaster County Department of Corrections tracked offenders who were incarcerated for a "Custodial Sanction." During the time period beginning 8/31/15 to 9/30/17, there have been 276 custodial sanctions. These offenders served a total of 4,802 days.

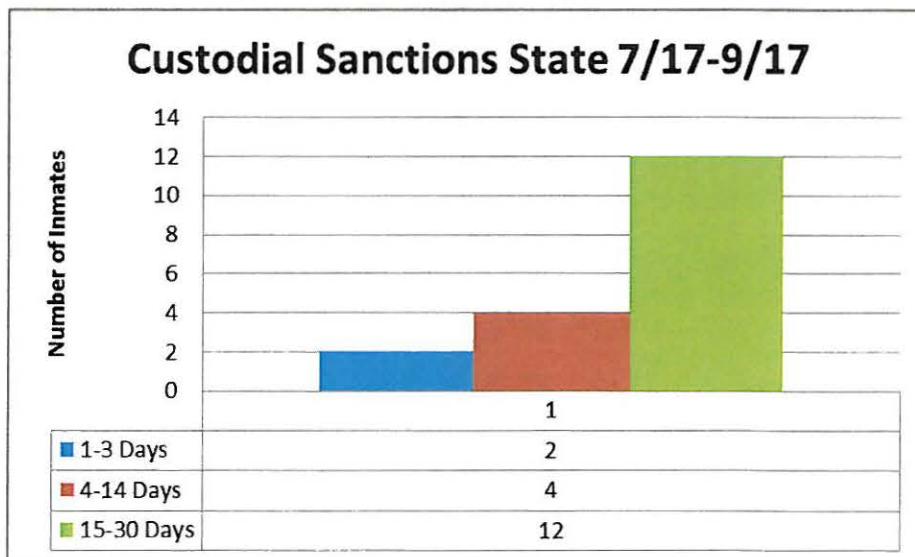


## Lancaster County Board of Corrections November 30, 2017

- Lancaster County Corrections tracked County Post Release Supervision Revocations. These 8 inmates were sentenced to a total of 1,047 days or averaged 130.87 days per inmate.



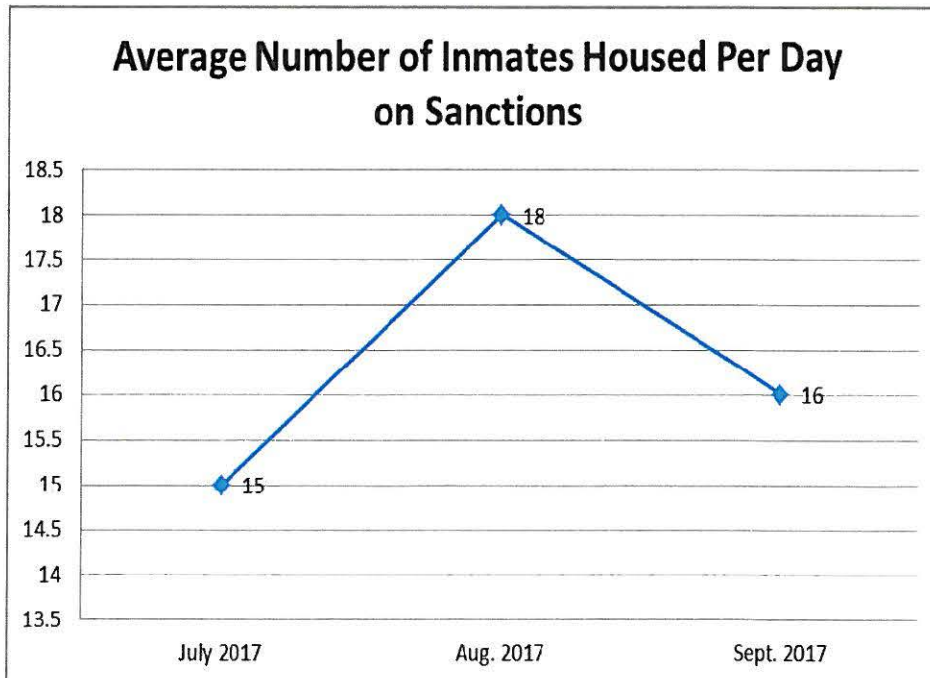
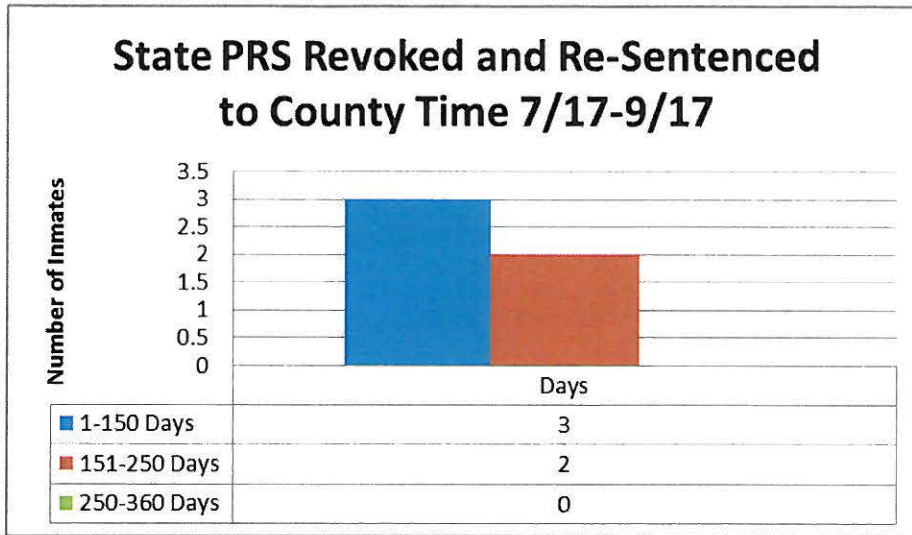
- Lancaster County Department of Corrections tracked offenders who were incarcerated for violating Post Release Supervision. These 18 inmates were sentenced to a total of 492 days or approximately 27 days per inmate.



# Lancaster County Board of Corrections

## November 30, 2017

- Lancaster County Department of Corrections tracked offenders who were incarcerated for violating State Post Release Supervision. These 5 inmates had their State Post Release Supervision revoked and were re-sentenced to county time. The 5 sentences totaled 620 days or 124 days per individual.



Lancaster County Board of Corrections  
November 30, 2017

---

**E. Regional Center Waiting Periods**

Currently Housed at the  
Regional Center

Date Ordered	Date Transferred	Days Waiting
12/2/2015	1/5/2016	34
4/5/2017	4/20/2017	15
3/2/2017	5/22/2017	81
3/20/2017	6/7/2017	79
4/4/2017	6/27/2017	84
5/3/2017	7/31/2017	89
5/22/2017	8/15/2017	85
6/15/2017	9/14/2017	91
6/29/2017	7/20/2017	21
6/27/2017	9/21/2017	86
7/14/2017	9/25/2017	73
7/18/2017	9/27/2017	71
	Total Days	809
	Average Days	68.9

Currently Waiting for  
Bed

Date Ordered	End of quarter	Days Waiting
7/27/2017	9/30/2017	65
8/4/2017	9/30/2017	57
8/7/2017	9/30/2017	54
	Total Days	176
	Average Days	58.7

**F. Community Hospital Posts**

Blue = 1 Hospital Post    Green = 2 Hospital Posts    Red = 3 Hospital Posts

2017	Sunday	Monday	Tuesday	Wednesday	Thursday	Friday	Saturday
							1 N
	2 N	3 N	4 N O	5 N O	6 O	7 O P	8 P
JUL	9 P	10 P	11 P Q	12 P Q	13	14	15



**Lancaster County Board of Corrections**  
**November 30, 2017**

<b>AUG</b>	16	17	18	19	20	21	22
	23	24	25	26	27	28	29
	30	31	1	2	3	4	5
	6	7	8	9	10	11	12
	13	14	15	16	17	18	19
	20	21	22	23	24	25 R	26 R
	27 R	28 R	29 R	30 R	31 R	1 R	2
<b>SEP</b>	3	4	5	6	7	8	9
	10	11	12	13	14	15	16
	17	18	19	20	21	22	23
	24	25	26	27	28	29	30

**G. Felonies Sentenced to Lancaster County**

- Felony 3A
  - 13 inmates @ 2,895 days (222.7 average days)
- Felony 4
  - 37 inmates @ 8,197 days (221.54 average days)
- ✓ Total of 52 inmates will serve 12,597 days (242.25 average days)

**H. Drug Court Remand**

- 21 drug court participants will serve 272 days (12.95 average days)
  - 31 total remands averaging 8.77 days during same time period

**I. Violation of House Arrest**

- 8 offenders served 374 days (46.75 average days)

Lancaster County Board of Corrections  
November 30, 2017

**J. Fiscal Year 2018 Status Report**

	2017			AVERAGE TO DATE	TOTAL TO DATE
	JUL	AUG	SEP		
<b>Average Daily Population @ADF</b>	645.5	638.9	623.1	<b>635.8</b>	<b>N/A</b>
High for Month	675	664	653	<b>664.0</b>	<b>N/A</b>
Low for Month	617	612	594	<b>607.7</b>	<b>N/A</b>
Total Number of Bookings	859	857	797	<b>837.7</b>	<b>2,513</b>
Felony Arrests	264	250	268	<b>260.7</b>	<b>782</b>
Misdemeanor Arrests	456	453	405	<b>438.0</b>	<b>1,314</b>
Felons Sentenced	28	27	26	<b>27.0</b>	<b>81</b>
Misdemeanants Sentenced	43	57	47	<b>49.0</b>	<b>147</b>
Held for Other Jurisdictions	66	71	50	<b>62.3</b>	<b>187</b>
Total Conditionally Released	332	334	313	<b>326.3</b>	<b>979</b>
Percent Conditionally Released	38.65%	38.97%	39.27%	<b>39.0%</b>	
Pre-Arrestment Releases	126	135	118	<b>126.3</b>	<b>379</b>
Court Disposition Releases	206	199	195	<b>200.0</b>	<b>600</b>
Total of Individuals Lodged	527	523	484	<b>511.3</b>	<b>1,534</b>
<b>MEDICAL/MENTAL HEALTH SERVICES</b>					
Referred to Jail Physician	154	219	217	<b>197</b>	<b>590</b>
Referred to Mental Health/LRC	1	1	0	<b>1</b>	<b>2</b>
Transferred to Emergency Room	11	3	6	<b>7</b>	<b>20</b>

**III. Programming (July-September, 2017)**

- Religious (567 Meetings)
  - Bible Study- 166
  - Church Service- 184
  - Discipleship Mentoring- 125
  - 1:1 Religious Counseling - 92
- Substance Abuse Education & 12 Step Programs (104 Meetings)
  - The Bridge Behavioral Health Substance Abuse Education for Men- 24
  - St. Monica's Substance Abuse Education for Women- 12
  - AA Meetings- 41
  - NA Meetings- 27

# Lancaster County Board of Corrections

## November 30, 2017

---

- Educational Programs (171 classes)
  - GED Classes- 86
  - Lincoln Literacy-8
  - Food Prep Skills- 10
  - Christian Heritage Parenting- 20
  - Christian Heritage Within My Reach (Domestic Relationships Ed)- 20
  - Released & Restored Job/Life Skills- 16
  - Moral Reconciliation Therapy (M.R.T.) - 11
- Transition Planning (88 inmate contacts)
  - V.A. Outreach-78
  - Center Pointe Dual Diagnosis Homeless Outreach- 10
- Work/Court Ordered Release Averages per Month
  - July
    - 13- County Court
    - 15- District Court
  - August
    - 9- County Court
    - 17- District Court
  - September
    - 11- County Court
    - 20- District Court
- Other
  - TABE (Test of Adult Basic Education)- 12 classes
  - Turning Pages Book Club for Women- 4 classes in July
  - GED Practice/Subject Tests-41: 5 earned GED's
  - Food Handler Permit Testing- 7

### **IV. Transportation (July-September, 2017)**

- Court Appearances
  - County Court

## Lancaster County Board of Corrections

### November 30, 2017

---

- 2,065 Video Appearances
- 664 Physical Appearances
- District Court
  - 200 Video Appearances
  - 659 Physical Appearances
- Off-Site Transports
  - State Department of Corrections
    - 74 to Diagnostic and Evaluation
    - 10 to Nebraska Center for Women (York)
  - Medical
    - 25 to Hospital
    - 40 to Clinical Appointments
  - Mental Health
    - 23 to Lincoln Regional Center
    - 3 to Crisis Center

#### **V. Work Crews (July-September, 2017)**

- Lancaster County Event Center
  - A crew of six inmates were utilized 24 times at the Event Center, cleaning horse stalls, completing odd jobs and setting up for various events.
  - Six inmates were assigned 10 times to clean up, set up & tear down during the Lancaster County Super Fair.
- Adult Detention Facility (ADF) or Yard Crews
  - Crews of three inmates worked 17 days around the facility maintaining grounds.
    - Trimming grass, mowing small areas, picking up trash, pulling weeds, pruning shrubs, cleaning the warehouse and showers along with other miscellaneous jobs.
- Road Crew
  - Four inmates picked up trash along the county roads on 7 occasions, covering 65.4 miles and collecting approximately 55 bags of trash.



# Lancaster County Board of Corrections

## November 30, 2017

---

- Food Bank utilized 4 inmates to pick up and drop off donations.
- Inmate crews of 4-8 individuals moved Risk Management.
  - Moved boxes, desks, filing cabinets, and small furniture

### **VI. Training (July-September, 2017)**

- Initial Orientation
  - 9 new correctional officers (80 hours)
  - 1 part time nurse practitioner (35 hours)
  - 3 medical/nursing staff (38 hours)
  - 1 nurse completed 35 hours but resigned before completion
  - 1 temporary mental health professional completed a brief orientation (4 hours)
- In-Service Training
  - 182 uniformed staff members attended Emergency Services Procedures class (8 hours)
  - 64 non-security staff members completed the Emergency Services Procedures reading packet & test. (2 hours)
  - 27 supervisors attended Gang Training (2 hours)
  - 32 supervisors attend direct supervision class specifically for supervisors (8 hours)
  - 8 on call officers reviewed briefing room training materials (2 hours)
  - 1 officer returned from military duty and completed classroom re-orientation (16 hours)
  - 1 officer returned from military duty and completed on the job training (40 hours)
  - 1 officer attended a make up class for use of force (8 hours)
  - 13 CCS nurses attended CPR recertification class
  - 9 officers completed the field training program (32 hours)
  - 12 officers complete on the job training program (80 hours)
  - 1 CCS employee attended a make up class for use of force (3 hours)
  - 1 CCS employee attended a make up class for suicide awareness (6 hours)

## Lancaster County Board of Corrections November 30, 2017

---

➤ Other Training

- 1 supervisor took an online class, Objective Jail Classification (3 hours)
- 1 staff member attended a Continuum class, Number 1 in Team (2 hours)
- 2 staff members attended The Millennial Mindset Continuum class (4 hours)