

# Lancaster County Board of Corrections

April 27, 2017

LANCASTER COUNTY DEPARTMENT OF CORRECTIONS

:

Lancaster County Board of Corrections  
April 27, 2017

---

Agenda

Thursday, April 27, 2017

10:30 a.m.

- I. Approval of the January 26, 2017 meeting's minutes
  - a. January 26, 2017 minutes
  
- II. Population Statistics & Charts
  - a. Average Daily Population Comparison
  - b. Booking and Lodging Totals
  - c. Pre-Trial and Sentence Conversion Release
  - d. Custodial Sanctions/County Reinvestment Act
  - e. Community Hospital Posts
  - f. Felonies Sentenced to Lancaster County
  - g. Drug Court Remand
  - h. Violation of House Arrest
  
- III. Programming
  
- IV. Transportation
  
- V. Work Crews
  
- VI. Training
  
- VII. County Justice Reinvestment Grant Program
  
- VIII. Skid Loader Lease Discussion

Lancaster County Board of Corrections

April 27, 2017

---

**MINUTES  
BOARD OF CORRECTIONS MEETING  
COUNTY-CITY BUILDING  
ROOM 113 - BILL LUXFORD STUDIO  
THURSDAY, JANUARY 26, 2017  
9:00 A.M.**

Board Members Present: Deb Schorr, Chair  
Bill Avery, Vice Chair  
Roma Amundson  
Todd Wiltgen  
Jennifer Brinkman

Others Present: Brad Johnson, Interim Corrections Director  
Ken Prey, Jail Administrator  
Brenda Fisher, Programs Manager  
Kerry Eagan, Chief Administrative Officer  
Ann Taylor, County Clerk's Office

The Chair called the meeting to order at 9:01 a.m.

**AGENDA ITEM**

**1 APPROVAL OF THE MINUTES OF THE OCTOBER 27, 2016 MEETING**

**MOTION:** Amundson moved and Avery seconded approval of the minutes of the October 27, 2016 meeting. Amundson, Avery, Wiltgen, Brinkman and Schorr voted yes. Motion carried 5-0.

**2 POPULATION STATISTICS & CHARTS**

Brad Johnson, Corrections Director, discussed the following population statistics and charts (see agenda packet):

A. Average Daily Population Comparison

The average daily population was 640.8 for this period in 2016 compared to 536.3 for the same period in 2015 (a 19.5% increase). The facility is at 96.4% of operational capacity of 665 beds. Population averages are as follows: Felony arrests (213.0); Misdemeanor

# Lancaster County Board of Corrections

April 27, 2017

---

arrests (414.3); Felons sentenced (13.7); Misdemeanors sentenced (44.3); Held for other jurisdictions (69.3); and Percent conditionally released (41.3).

## B. Booking and Lodging Totals

Average bookings were up by 2.8% and average lodgings were down 18.7%, compared to the same time period last year.

## C. Pre-Trial and Sentence Conversion Release

There were 21 pre-trial releases in 2016 compared to 32 in 2015 and 9 sentence conversions (house arrests) in 2016 compared to 5 in 2015.

## D. Custodial Sanctions/County Reinvestment Act

Johnson said custodial sanctions are related to implementation of 2015's Legislative Bill (LB) 605, which changed classification of penalties, punishments, probation and parole provisions, and provisions relating to criminal records and restitution). There have been a total of 157 custodial sanction incidents for the time period of August 31, 2015 to December 30, 2016 (24 served 1-3 days, 50 served 4-14 days, and 83 served 15-30 days). He said these offenders served a total of 2,153 days. **NOTE:** Johnson presented additional information following the meeting that showed 65 individuals accounted for the 157 separate sanction periods (Exhibit A).

## E. Community Hospital Posts (2016)

Johnson discussed a chart detailing community hospital posts. **NOTE:** The facility must staff each offender who is hospitalized on a 24/7 basis and two staff members must accompany any offender that is having a procedure.

## F. Felonies Sentenced to Lancaster County

Nine Felony 3A inmates served a total of 1,680 days (186.7 average days) and 17 Felony 4 inmates served 3,792 days (223.1 average days).

## G. Drug Court Remand

20 Drug Court participants served 211 days (10.6 average days).

## H. Violation of House Arrest

Lancaster County Board of Corrections  
April 27, 2017

---

11 offenders served 214 days (19.5 average days).

I. Calendar Year 2016 Monthly Status Report

See agenda packet.

**3 PROGRAMMING**

Brenda Fisher, Programs Manager, discussed some of the programming offered. She noted there are a large number of religious volunteers and said some come into the various pods more than once a week. She said the substance abuse education programs are provided by agencies and the presenters typically come in once or twice a week on a scheduled format unless it is a 12-Step Program.

**4 TRANSPORTATION**

See agenda packet.

**5 WORK CREWS**

See agenda packet.

**6 TRAINING**

Schorr asked Johnson whether he has any legislative concerns. Johnson cited LB 145 (Provide for a hearing to determine financial ability to pay fines and costs and traffic citations and provide for community service) which is intended to reduce the number of individuals who sit in jail on fines. He said he understands the intent of the bill but is not sure how the courts will react.

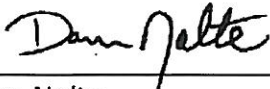
Wiltgen said he was asked at a meeting this week why the County is not utilizing out-of-county housing, noting some counties are charging rates less than \$100 per day. Johnson said the County may have to explore that option if it reaches a point where it no longer has sufficient space to house its inmates. He said many of the other facilities are nearing capacity as well so it may be difficult to find much space nearby. Transportation costs and programming were also mentioned as issues to consider.

Avery exited the meeting at 9:23 a.m.

Lancaster County Board of Corrections  
April 27, 2017

**7 ADJOURNMENT**

**MOTION:** Amundson moved and Wiltgen seconded to adjourn the meeting at 9:24 a.m. Wiltgen, Brinkman, Amundson and Schorr voted yes. Avery was absent. Motion carried 4-0.

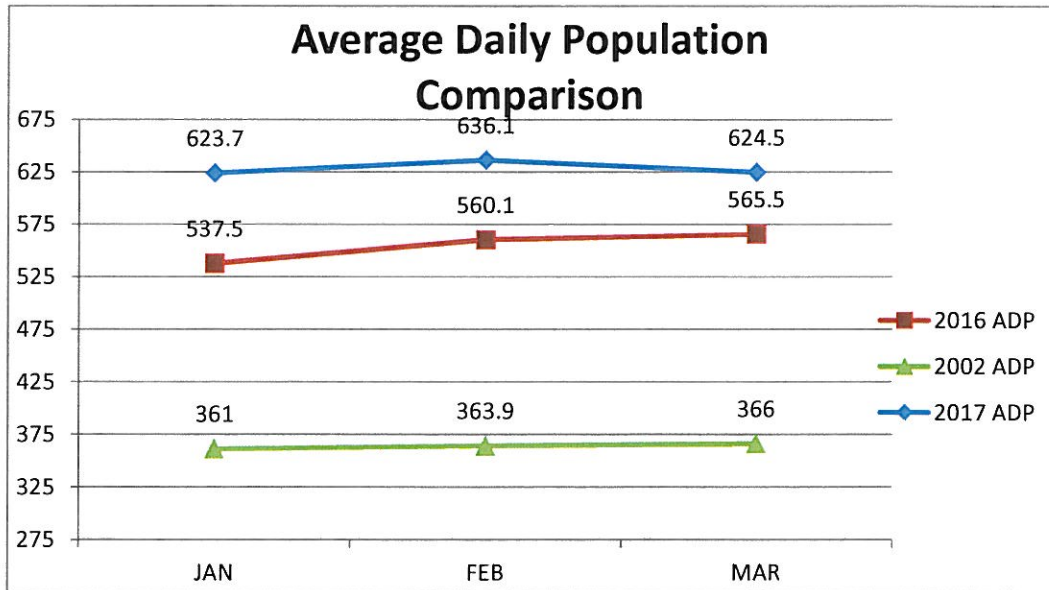


Dan Nolte  
Lancaster County Clerk



**II. Population Statistics (January-March, 2017)**

**A. ADP Population Comparison**



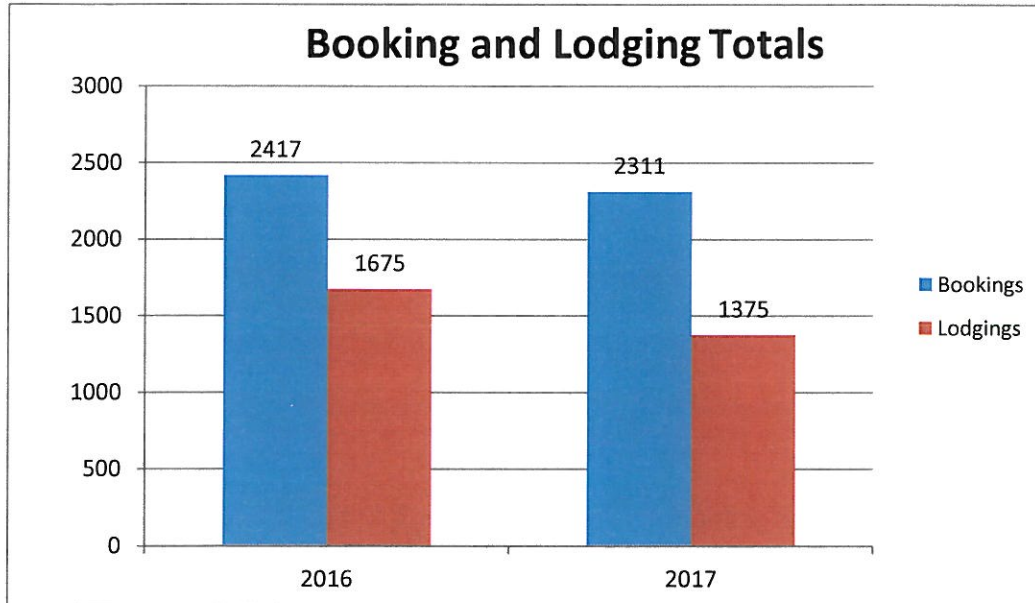
- The average daily population (ADP) for this period of 2017 was 628.1 detainees compared to 554.4 for the same period in 2016. This is a 13.3% increase and 72.7 % increase when compared to 2002.
- This period ADP consumed 94.5 % of the department's operational capacity of 665.

# Lancaster County Board of Corrections

## April 27, 2017

- Other population averages:
  - Felony Arrests-244.7
  - Misdemeanor Arrests-398.0
  - Felons Sentenced-31.0
  - Misdemeanors Sentenced-46.7
  - Held for other Jurisdictions-49.7
  - Percent Conditionally Released-40.5%

### B. Booking & Lodging Totals

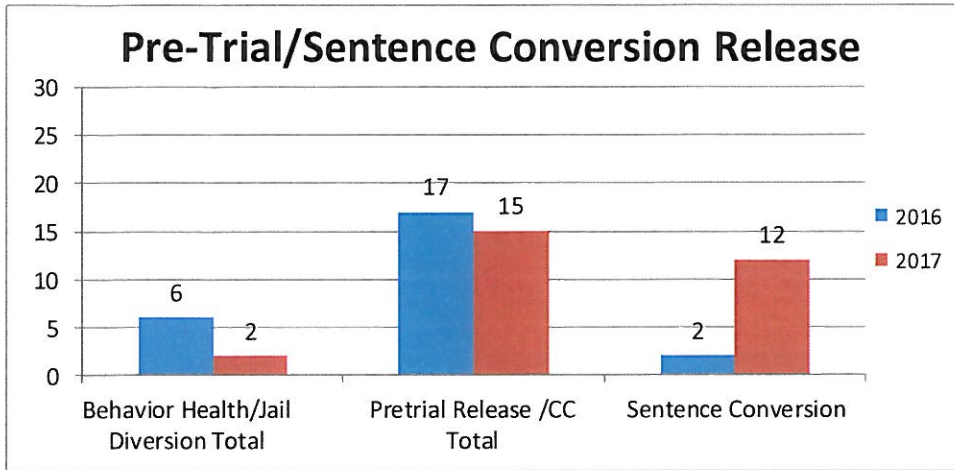


- Average bookings were down 4.4% compared to same time period last year.
- Average lodgings were down 17.9% compared to same time period last year.

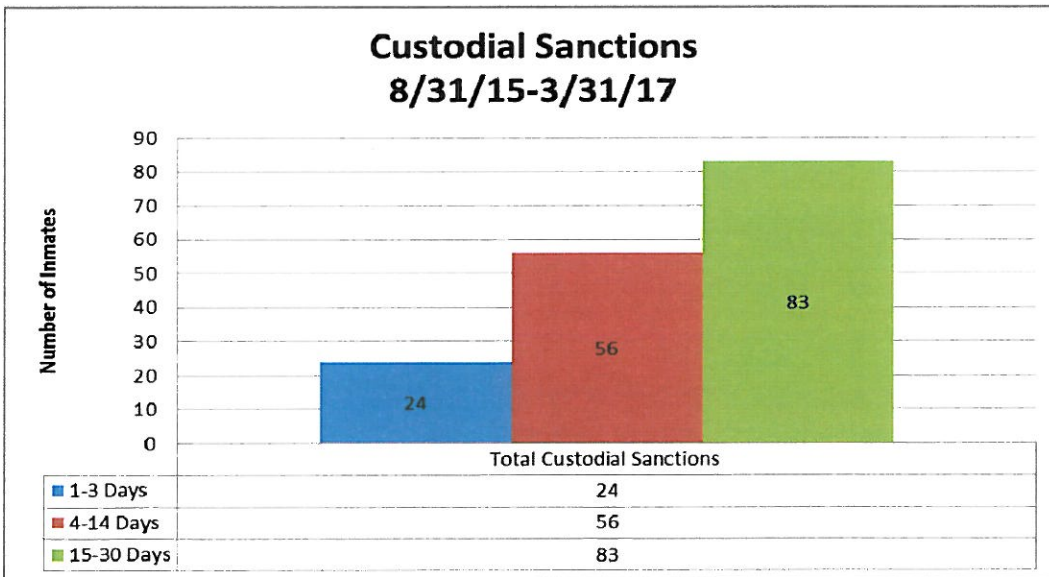


Lancaster County Board of Corrections  
April 27, 2017

**C. Pre-Trial/Sentence Conversion Release**



**D. Custodial Sanctions/County Reinvestment Act**



- Lancaster County Department of Corrections tracked offenders who were incarcerated for a “Custodial Sanction.” During the time period beginning 8/31/15 to 3/31/17, there have been 163 custodial sanctions. These offenders served a total of 2,770 days.
- 24 Probationers will serve 617 days this quarter. (25.7 days average per inmate)



Lancaster County Board of Corrections  
April 27, 2017

**E. Community Hospital Posts-2017**

Blue=1 Hospital Post  
Green=2 Hospital Posts

2017	Sunday	Monday	Tuesday	Wednesday	Thursday	Friday	Saturday
JAN	1	2	3	4	5	6	7
	8	9	10	11	12	13	14
	15	16	17	18	19	20	21
FEB	22	23	24	25	26	27	28
	A	A	A				B
	29	30	31	1	2	3	4
	B	B					
MAR	5	6	7	8	9	10	11
	12	13	14	15	16	17	18
	C	C	C	C			
	19	20	21	22	23	24	25
	26	27	28	1	2	3	4
	5	6	7	8	9	10	11
	D	D	D				
12	13	14	15	16	17	18	
E	E				F	F G	
19	20	21	22	23	24	25	
G	G	G H	G H	G H			

**F. Felonies Sentenced to Lancaster County**

- Felony 3A
  - 27 inmates @ 5,592 days (207.12 average days)
- Felony 4
  - 38 inmates @ 8,535 days (224.61 average days)
- ✓ Total of 65 inmates will serve 14,127 days (217.3 average days)

**G. Drug Court Remand**

- 29 drug court participants will serve 470 days (16.2 average days)

Lancaster County Board of Corrections  
April 27, 2017

---

**H. Violation of House Arrest**

- 11 offenders served 464 days (42.2 average days)

**III. Programming (January-March, 2017)**

- Religious (607 Meetings)
  - Bible Study- 168
  - Church Service- 202
  - Discipleship Mentoring- 93
  - 1:1 Religious Counseling -144
- Substance Abuse Education & 12 Step Programs (104 Meetings)
  - The Bridge Behavioral Health Substance Abuse Education for Men- 11
  - St. Monica's Substance Abuse Education for Women- 13
  - AA Meetings- 53
  - NA Meetings- 27
- Educational Programs (185 classes)
  - GED Classes-89
  - Lincoln Literacy- 10
  - Food Prep Skills- 20
  - Christian Heritage Parenting- 21
  - Christian Heritage Within My Reach (Domestic Relationships Ed)- 21
  - Released & Restored Job/Life Skills- 11
  - Moral Reconciliation Therapy (M.R.T.) -13
- Transition Planning (112 inmate contacts)
  - V.A. Outreach- 91
  - Center Pointe Dual Diagnosis Homeless Outreach- 21

# Lancaster County Board of Corrections

## April 27, 2017

---

- Work/Court Ordered Release Averages per Month
  - January
    - 9 - County Court
    - 17 - District Court
  - February
    - 14 - County Court
    - 23 - District Court
  - March
    - 13 - County Court
    - 26 - District Court
- Other
  - Turning Pages Book Club for Women -4 classes
  - TABE (Test of Adult Basic Education)-10 classes
  - GED Practice/Subject Tests- 18
  - Food Handler Permit Testing- 2

### **IV. Transportation (January-March, 2017)**

- Court Appearances
  - County Court
    - 1,788 Video Appearances
    - 629 Physical Appearances
  - District Court
    - 194 Video Appearances
    - 714 Physical Appearances
- Off-Site Transports
  - State Department of Corrections
    - 76 to Diagnostic and Evaluation
    - 15 to Nebraska Center for Women (York)
  - Medical
    - 44 to Hospital
    - 55 to Clinical Appointments

# Lancaster County Board of Corrections

## April 27, 2017

---

- Mental Health
  - 24 to Lincoln Regional Center
  - 4 to Crisis Center

### **V. Work Crews (January-March, 2017)**

- Lancaster County Event Center
  - A crew of 6 inmates were used 13 days for cleaning horse stalls & setting up for various events along with other odd jobs.
- Adult Detention Facility (ADF)
  - Crews of 3 inmates worked 55 days assisted in maintaining ADF grounds including:
    - Trimming grass, mowing small areas, picking up trash, pulling weeds, pruning shrubs, cleaning the warehouse/showers along with miscellaneous work in non-detention area of the jail.
- Election Commissioner
  - Six inmates were assigned one day loading & unloading ballot boxes.

### **VI. Training (January-March, 2017)**

- Initial Orientation
  - 9 full time Correctional Officers (80 hours)
  - 4 kitchen staff (35 hours)
  - 9 medical staff (38 hours)
  - 2 LMHP staff (50 hours)
  - 1 Records Tech (12 hours)
  - 2 Staff attended re-orientation class after being absent for 6-12 months (40 hours)
- In-Service Training
  - 4 Program staff members completed pat search training (1 hour)
  - 15 employees attended Direct Supervision class for instructors (24 hours)
  - 7 officers completed the field training program (32 hours)

# Lancaster County Board of Corrections

## April 27, 2017

---

- 7 officers completed on the job training program (80 hours)
- 4 staff members attended Emergency Procedures make up training (8 hours)
- 14 officers attended our department's "Use of Force" in service class (8 hours)
- 1 officer attended a make up Use of Force class (3 hours)
- 1 staff member attended the instructor Use of Force class (40 hours)
- 8 officers completed the Jail Academy (80 hours)
- 1 officer attended a make-up CPR class (8 hours)
- Other Training
  - 13 Staff completed the Cultural Diversity Class (2 hours)
  - 1 Supervisor completed online NIC classes (7 hours)

### **VII. County Justice Reinvestment Grant Program**

This is a separate and distinct budgetary program within the Nebraska Crime Commission where funding is used to provide grants to counties to help offset jail costs by developing programs, services & approaches that reduce populations.

The County Justice Reinvestment Grant is a statutory obligation of the Commission to counties that have met certain criteria. The county demonstrated to the commission that their average daily population increased as a result of the implementation of LB605.

Lancaster County was awarded \$74,400 on March 27, 2017.

### **VIII. Skid Loader Lease Discussion**

Lancaster County Board of Corrections  
April 27, 2017

---