

Lancaster County Board of Corrections

October 27, 2016

LANCASTER COUNTY DEPARTMENT OF CORRECTIONS

:

Lancaster County Board of Corrections
October 27, 2016

Agenda

Thursday, October 27, 2016

8:30 a.m.

- I. Approval of the July 21, 2016 meeting's minutes
 - a. July 21, 2016 minutes

- II. Population Statistics & Charts
 - a. Average Daily Population Comparison
 - b. Booking and Lodging Totals
 - c. Pre-Trial and Sentence Conversion Release
 - d. Custodial Sanctions/County Reinvestment Act
 - e. Total Inmate Admissions
 - f. Average Number of Days in Custody
 - g. Felons Incarcerated 30 days or More/Awaiting Disposition
 - h. Community Hospital Posts-2016
 - i. Felonies Sentenced to Lancaster County
 - j. Drug Court Remand
 - k. Violation of House Arrest

- III. Other Business

- IV. Programming

- V. Transportation

- VI. Work Crews

- VII. Training

**MINUTES
BOARD OF CORRECTIONS MEETING
COUNTY-CITY BUILDING
ROOM 113 - BILL LUXFORD STUDIO
THURSDAY, JULY 21, 2016
9:00 A.M.**

Board Members Present: Deb Schorr, Chair
Roma Amundson
Bill Avery
Todd Wiltgen

Board Members Absent: Larry Hudkins, Vice Chair

Others Present: Brad Johnson, Interim Corrections Director
Lieutenant Virginia Prey, Corrections Records Division
Kerry Eagan, Chief Administrative Officer
Ann Taylor, County Clerk's Office

The Chair called the meeting to order at 9:13 a.m.

AGENDA ITEM

1 APPROVAL OF THE MINUTES OF THE JANUARY 21, 2016 MEETING

MOTION: Amundson moved and Avery seconded approval of the minutes of the January 21, 2016 meeting. Wiltgen, Avery, Amundson and Schorr voted yes. Hudkins was absent. Motion carried 4-0.

Brad Johnson, Interim Corrections Director, said the report covers the period of January-June, 2016 because the first quarter meeting was cancelled. He stated the agenda is in the same format that was used in the past but said he would like feedback on information the Board would like him to provide in the future.

2 POPULATION STATISTICS

Johnson discussed the following population statistics (see agenda packet):

A. Average Daily Population

The average daily population was 588, compared to 532 for the same period in 2015 (a 10.5% increase. Johnson felt the increase is primarily due to offenders staying longer in the facility.

Avery asked whether Corrections is accepting prisoners from the State. Johnson said they are not.

Johnson said the facility is at 88.5% of operational capacity (665 beds). **NOTE:** The total capacity is 786. Operational capacity is based on staffing and classifications. Population averages are as follows: Felony arrests (233.3); Misdemeanor arrests (428.8); Felons sentenced (20.0); Misdemeanors sentenced (61.7); Held for other jurisdictions (55.3); and Percent conditionally released (35.7).

B. Booking and Lodging Totals

Average bookings were down 1.1% and average lodgings were down 9.9%, compared to the same time period last year.

C. Pre-Trial/Sentence Conversion Release

Johnson said 12 individuals were on behavioral health/jail diversion, 31 on pre-trial release and 6 on sentence conversion, which is primarily house arrest, for this period. Johnson said many offenders elect not to participate in house arrest because it is costly and good time credits are not applied.

Avery questioned whether the County should have built a larger facility. **NOTE:** The Lancaster County Adult Detention Facility (LCADF) at 3801 West "O" Street opened in July, 2013. Johnson said a lot of the population numbers are the ramifications of the 2015 Legislative Session's Legislative Bill (LB) 605, which changed the classification of penalties, punishments, probation and parole provisions, and provisions relating to criminal records and restitution. He said LCADF is holding nine individuals who are sentenced to more than one year in the jail; one individual who has three-one year consecutive sentences and will not be released until November, 2017; and one individual who has consecutive sentences of 180 days, 90 days, 30 days, and 90 days. Johnson noted minimum sentences on Class III, IIIA and IV felonies were eliminated and said offenders who now receive a sentence of a year or less are sent to the county jail.

Kerry Eagan, Chief Administrative Officer, asked whether Corrections is tracking the impact of LB 605. Johnson said they are. Lieutenant Virginia Prey, Corrections Records Division, said 56 probationers are serving a total of 869 days as a result of the custodial sanctions. Eagan noted counties were promised when the bill was drafted that if the original sentence could result in a term of more than a year, it would be served in the Nebraska State Penitentiary but said the statute was written to state that any sentence of less than a year, regardless of whether it was for a felony that could be served over a year, is served in the jail. Prey said the individuals Johnson referred to were charged with felonies and pled down to misdemeanors.

Schorr asked whether the County could introduce legislation about the concurrent component, that if the length of the concurrent sentences exceed a year that they would have to be transferred to the Penitentiary. Eagan said that is a different concept.

Schorr asked what type of misdemeanors were involved. Prey said one individual was charged with Felony III strangulation and it was broken into three cases of violation of a protection order and a domestic assault. All four are Misdemeanor I's. The individual received sentences of 365, 120, 180 and 365 days, to run consecutively.

D. Custodial Sanctions

See Item 2C.

E. Felonies Sentenced to Lancaster County

See Page 5 of the report.

F. Drug Court Remand

See Page 5 of the report.

G. Violation of House Arrest

See Page 5 of the report.

H. Probation Revocation in Lancaster County

See Page 5 of the report.

3 PROGRAMMING

See Pages 5 and 6 of the report.

Avery asked whether there is mental health counseling available. Johnson said a psychiatrist comes in once a week and Licensed Mental Health Practitioners (LMHP's) are on-staff seven days a week.

4 TRANSPORTATION

This item was not covered.

5 WORK CREWS

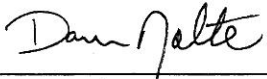
This item was not covered.

6 TRAINING

This item was not covered.

7 ADJOURNMENT

MOTION: Amundson moved and Wiltgen seconded to adjourn the meeting at 9:31 a.m. Amundson, Avery, Wiltgen and Schorr voted yes. Hudkins was absent. Motion carried 4-0.



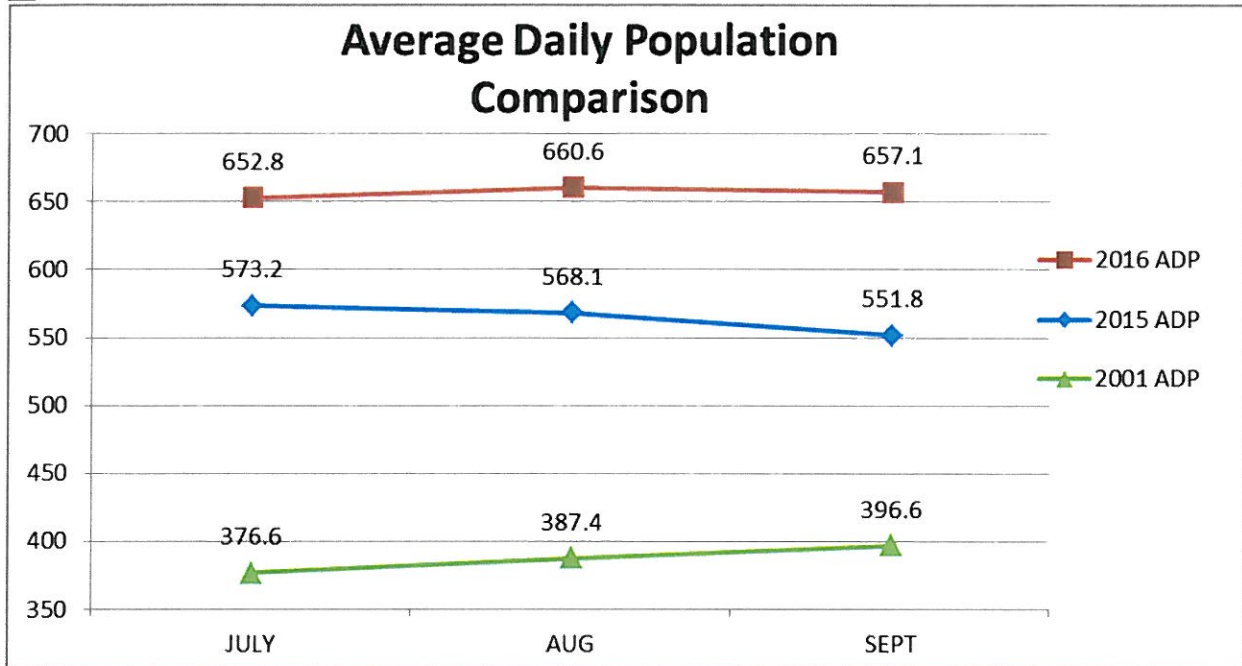
Dan Nolte
Lancaster County Clerk



Lancaster County Board of Corrections
October 27, 2016

II. Population Statistics (July-September, 2016)

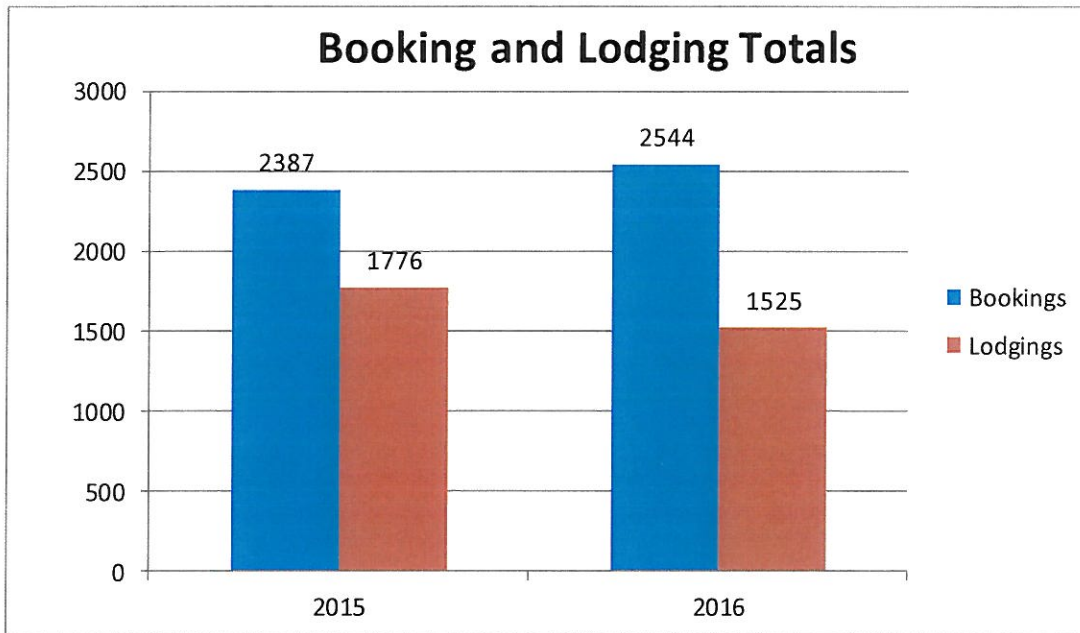
A.



- The average daily population (ADP) for this period of 2016 was 656.8 detainees compared to 564.4 for the same period in 2015. This is a 16.4% increase over FY15. This is a 69.8% increase when compared to 2001.
- This period ADP consumed 98.8 % of the department's operational capacity of 665.
- Other population averages:
 - Felony Arrests-242.7
 - Misdemeanor Arrests-461.0
 - Felons Sentenced-21.7
 - Misdemeanors Sentenced-57.3
 - Held for other Jurisdictions-61.3
 - Percent Conditionally Released-39.8%

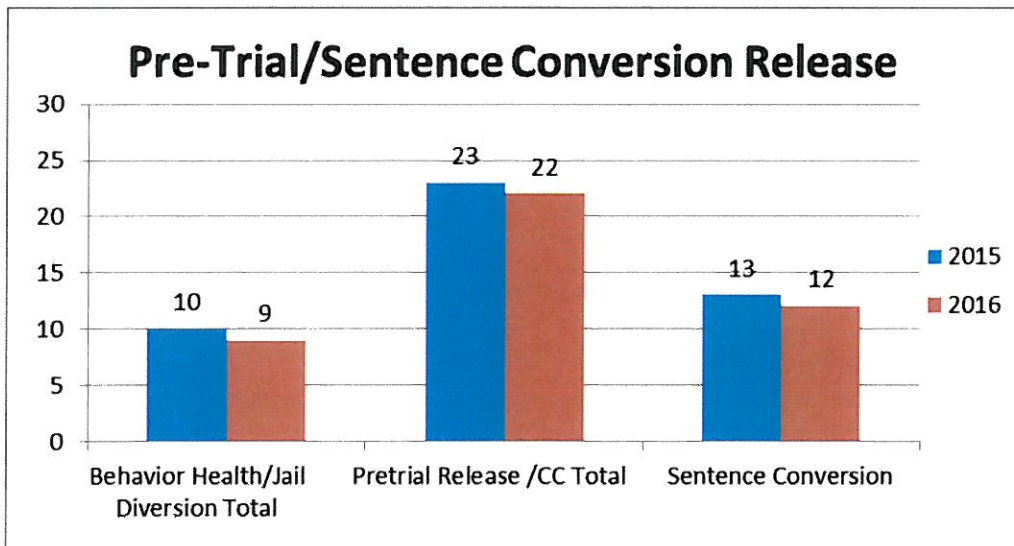
Lancaster County Board of Corrections
October 27, 2016

B.



- Average bookings were up +6.6% compared to same time period last year.
- Average lodgings were down -14.1% compared to same time period last year.

C.

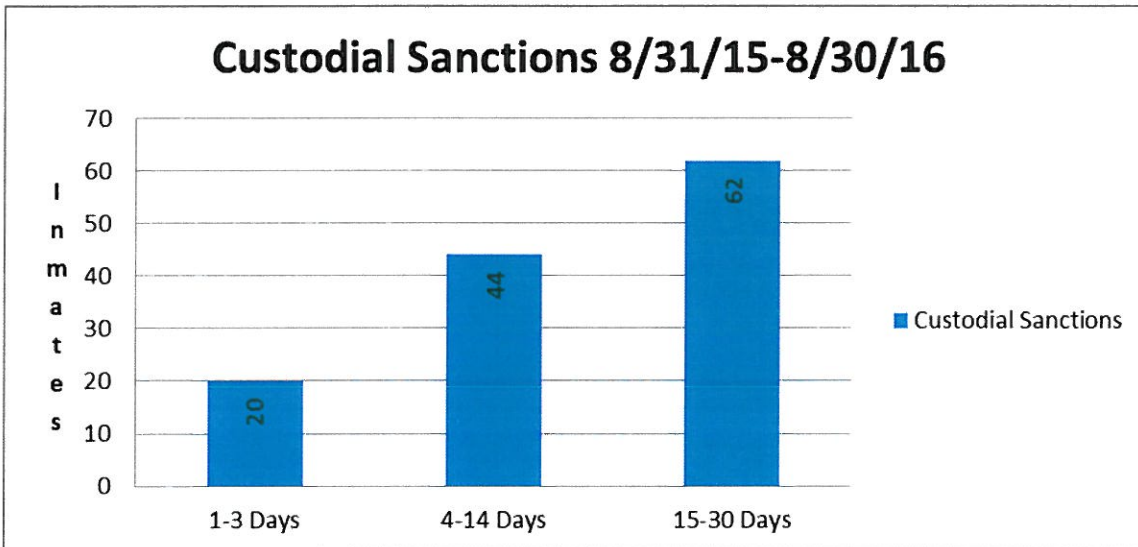


Lancaster County Board of Corrections

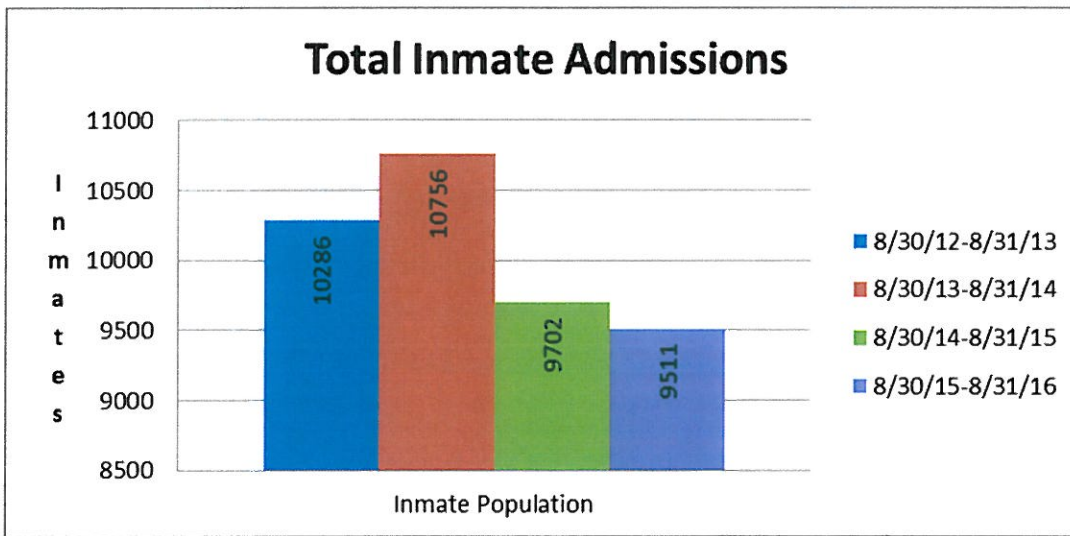
October 27, 2016

D. Custodial Sanctions/County Reinvestment Act

- 20 Probationers will serve 465 days (23.25 days average per inmate)
- Lancaster County Department of Corrections tracked offenders who were incarcerated for a "Custodial Sanction." During the time period beginning 8/31/15 to current date there have been 126 custodial sanctions. Fifty six (56) offenders were responsible for these sanctions and were booked into custody 90 times. These offenders served a total of 1,427 days.

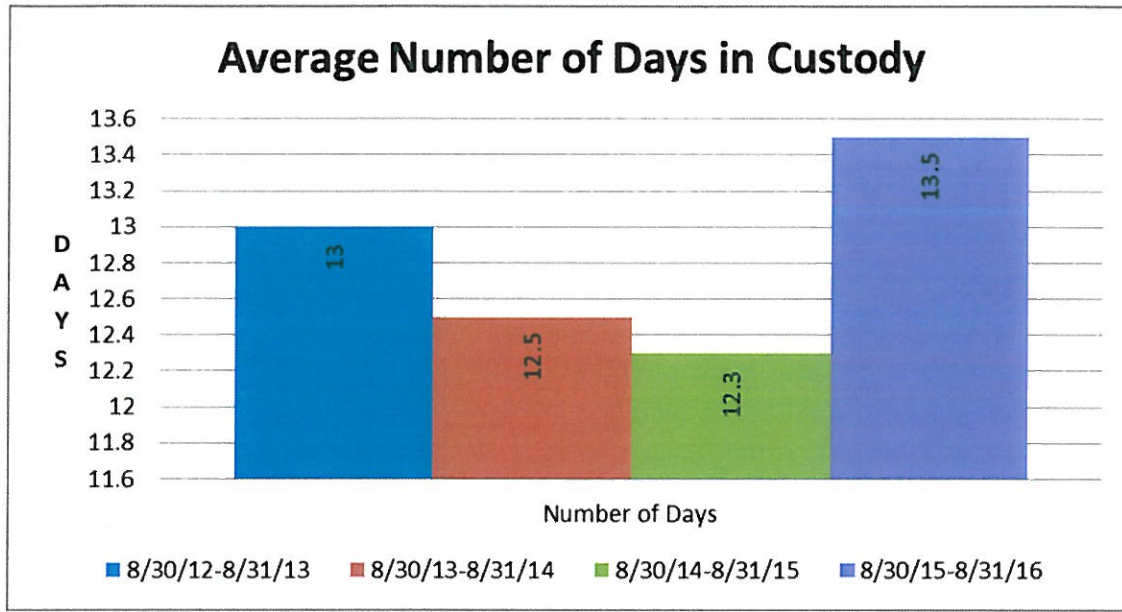


E. Total Inmate Admissions Chart

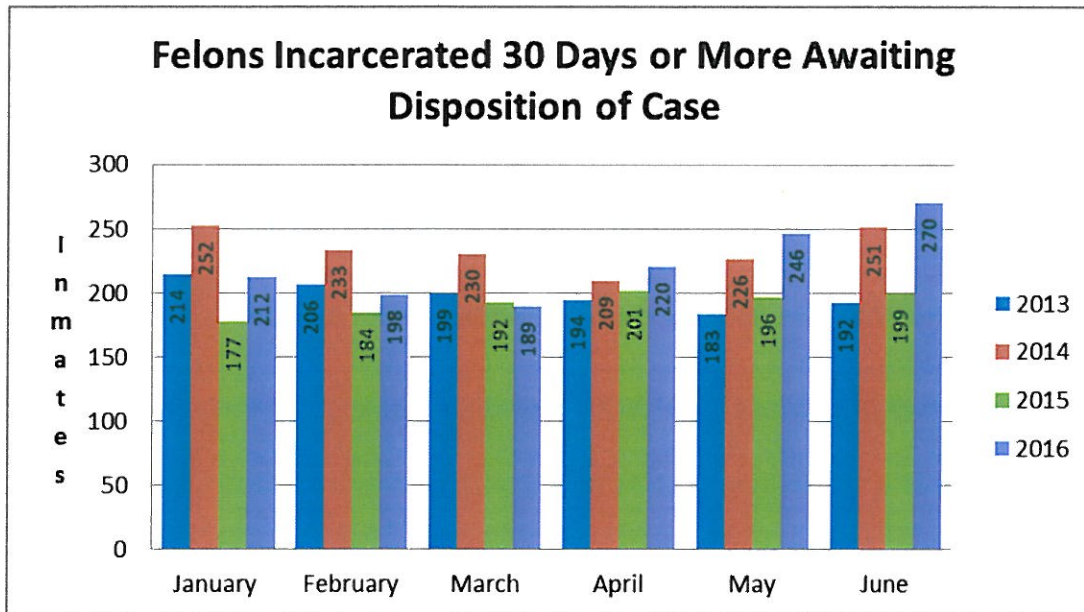


Lancaster County Board of Corrections
 October 27, 2016

F. Average Number of Days in Custody Chart



G. Felons Incarcerated 30 Days or More Awaiting Disposition of Case



Lancaster County Board of Corrections

October 27, 2016

H. Community Hospital Posts-2016

Blue = 1 Hospital Post Green = 2 Hospital Posts Red = 3 Hospital Posts

2016	Sunday	Monday	Tuesday	Wednesday	Thursday	Friday	Saturday
JAN						1	2
	3	4	5	6	7 A	8 A	9 A
	10 A	11 A	12 A	13 A	14 B	15 B	16 B
	17 B	18	19	20	21	22	23
	24	25	26	27 C	28 C	29 C	30
	31	1	2	3	4	5	6 D
FEB	7 D	8	9	10	11	12	13
	14	15	16	17	18	19	20
	21	22	23	24	25	26	27
	28	29	1	2 E	3 E	4 E	5 E
MAR	6	7	8	9	10	11	12
	13	14 F	15 F	16 F	17 F	18 F	19 F
	20 F	21 F	22 F	23 F	24 F	25 G	26 G
	27 G	28 G	29 G	30 F	31	1 F	2 F
	3 F	4 H	5 H	6 H	7 H	8 F	9 F
	10 F	11 F	12 F	13 F	14 F	15 F	16 F
APR	17 F	18	19	20	21	22	23
	24	25	26	27	28	29	30
	1	2	3	4	5 I	6 I	7 I
	8	9	10	11	12	13	14
MAY	15 J	16 J	17 J	18 J	19	20	21
	22	23	24	25	26	27	28

Lancaster County Board of Corrections

October 27, 2016

		K	K	K	K	K	
	29	30	31	1	2	3 L	4 L
	5 L	6	7	8	9	10	11
	12	13	14	15	16	17	18
JUN	19	20	21	22	23	24	25
	26	27	28	29	30		

2016	Sunday	Monday	Tuesday	Wednesday	Thursday	Friday	Saturday
						1	2
	3	4	5	6	7	8 M N	9 M N
JUL	10 M N	11 M N	12 M N O	13 M N O	14 M O	15 M	16 M
	17 M	18 M	19	20	21	22	23
	24	25	26	27	28	29	30
	31	1	2	3	4	5	6
	7	8	9	10	11	12	13 P
AUG	14 P	15 P Q	16 P Q	17 P Q R	18 P Q	19 P Q	20 P Q
	21	22	23	24	25	26	27
	28	29	30	31	1	2	3
	4	5	6	7	8	9 S	10 S
	11 S	12 S	13 S	14 S T U	15 T U	16 T U	17 T U
SEP	18 T U	19 U	20 U	21 U V	22 U V	23 U V	24 U V
	25 U V	26 U V X	27 U X Z	28 X Z	29 Z	30	1
	2	3	4	5	6	7	8 AA

Lancaster County Board of Corrections
October 27, 2016

OCT	9 AA	10	11	12	13	14	15
	16	17 BB	18 BB CC	19 CC DD	20 CC DD	21	22
	23	24	25	26	27	28	29
	30	31	1	2	3	4	5
NOV	6	7	8	9	10	11	12
	13	14	15	16	17	18	19
	20	21	22	23	24	25	26
	27	28	29	30	1	2	3
DEC	4	5	6	7	8	9	10
	11	12	13	14	15	16	17
	18	19	20	21	22	23	24
	25	26	27	28	29	30	31

I. Felonies Sentenced to Lancaster County

- Felony 3
 - 1 inmate @ 30 days (30 average days)
- Felony 3A
 - 20 inmates @ 3,545 days (177.3 average days)
- Felony 4
 - 19 inmates @ 4,520 days (237.9 average days)
- ✓ **Total of 40 inmates will serve 8,095 days (202.4 average days)**

J. Drug Court Remand

- 24 drug court participants will serve 216 days (9.0 average days)

K. Violation of House Arrest

- 11 offenders served 299 days (27.2 average days)

Lancaster County Board of Corrections
October 27, 2016

III. Other Business- Current

➤ M.R.T Training

Beginning November 8, 2016, probation staff will begin conducting Moral Reconciliation Therapy (M.R.T.) classes with inmates in the jail's custody. M.R.T is a cognitive/behavioral program designed to address errors in thinking and thereby facilitate behavioral change. Nearly all probationers are required to complete this program as a condition of probation.

Probation staff will identify inmates who are currently in the jail's custody for custodial sanctions related to their probationary status. These inmates will be enrolled in the M.R.T. classes, so that they can continue to make progress in completing it even while serving custodial sanctions. The jail's Programs staff will have the ability to select 5 or 6 inmates to participate in the program along with those currently on probation.

To optimize this class, Programs will be looking to place inmates in it who have low level felony offenses and are likely to be sentenced to probation, if found guilty of the criminal offense for which they are in custody. This approach will allow current probationers to continue progress in M.R.T. classes, and gives inmates who are likely candidates for probation a "running start" in having the M.R.T. classes underway prior to being sentenced to probation.

IV. Programming (July-September, 2016)

➤ Religious (547 Meetings)

- Bible Study- 169
- Church Service- 194
- Discipleship Mentoring- 91
- 1:1 Religious Counseling -93

➤ Substance Abuse Education & 12 Step Programs (116 Meetings)

- The Bridge Behavioral Health Substance Abuse Education for Men- 21
- St. Monica's Substance Abuse Education for Women- 12
- AA Meetings- 61
- NA Meetings- 22

➤ Educational Programs (193 classes)

- GED Classes-100

Lancaster County Board of Corrections

October 27, 2016

- Lincoln Literacy- 9
- Food Prep Skills- 10
- Christian Heritage Parenting- 21
- Christian Heritage Within My Reach (Domestic Relationships Ed)- 21
- Released & Restored Job/Life Skills- 16
- Rent Wise-16
- Transition Planning (115 inmate contacts)
 - V.A. Outreach- 101
 - Center Pointe Dual Diagnosis Homeless Outreach- 14
- Work/Court Ordered Release Averages per Month
 - July
 - 15 - County Court
 - 26 - District Court
 - August
 - 11 - County Court
 - 29 - District Court
 - September
 - 9 - County Court
 - 26 - District Court
- Other
 - Turning Pages Book Club for Women -7 classes
 - TABE (Test of Adult Basic Education)-9 classes
 - GED Practice/Subject Tests- 66
 - Food Handler Permit Testing- 3
 -

V. Transportation (July-September, 2016)

- Court Appearances
 - County Court

Lancaster County Board of Corrections

October 27, 2016

- 2,143 Video Appearances
- 712 Physical Appearances
- District Court
 - 170 Video Appearances
 - 699 Physical Appearances
- Off-Site Transports
 - State Department of Corrections
 - 65 to Diagnostic and Evaluation
 - 17 to Nebraska Center for Women (York)
 - Medical
 - 31 to Hospital
 - 29 to Clinical Appointments
 - Mental Health
 - 17 to Lincoln Regional Center
 - 9 to Crisis Center

VI. Work Crews (July-September, 2016)

- Lancaster County Event Center
 - A crew of 6 inmates cleaned horse stalls & set up for various events including the Lancaster County Fair. (36 days)
- County Engineer Crew-
 - Three inmates were assigned for 45 days to work at the County Engineer's Department cleaning the shop, doing yard work & assisting with general every day duties.
- Adult Detention Facility (ADF)
 - Crews of 3 inmates worked 49 days assisted in maintaining ADF grounds including:

Lancaster County Board of Corrections
October 27, 2016

- Trimming grass, mowing small areas, picking up trash, pulling weeds, pruning shrubs, and cleaning the warehouse.
- Road Crews
 - Up to 4 inmates assisted with county road trash pickup, covering approximately 246 miles and collected 423 bags of trash.

VII. Training (July-September, 2016)

- Initial Orientation
 - 13 full time Correctional Officers (80 hours)
 - 8 kitchen staff (35 hours)
 - 6 Medical staff (32 hours)
 - 1 Keefe & 1 Inmate Calling Solutions employee (34 hours)
 - 9 Officers and 2 Sergeants attended our training academy (80 hours)
 - 13 Officers and 1 Sergeant attended a make-up orientation class (32 hours)
- In-Service Training
 - 3 Programs staff members attended NCIC training (2 hours)
 - 1 staff member attended non-security use of force class (3 hours)
 - 1 Officer attended Suicide Awareness & Searches class (8 hours)
 - 2 Officers completed the field training program (32 hours)
 - 2 Staff members attend the Crisis Intervention training in Omaha (40 hours)
 - 9 Staff members completed on the job training (80 hours)
 - 176 Staff members attended Emergency Procedures Training (8 hours)
 - 70 Staff members completed Emergency Procedures Test/Packet (2 hours)
 - 3 employees attended the Jail Administration Class/Part 1 and 2 employees completed the same class, Part 2. (40 hours)
 - 2 Staff member attended an interview/interrogation class (32 hours)

Lancaster County Board of Corrections

October 27, 2016

➤ Other Training

- 1 employee attended the Continuum class, "The Pursuit of Professionalism" (2 hours)
- 2 employees attended Continuum's "Creating an Intentional Community" (2 hours)
- 1 staff member attended Gang ID class in Grand Island (8 hours)
- 4 staff members attended the NIC sponsored Direct Supervision class in CO (40 hours)
- 2 employees went to NIC/Offender Workforce Development Specialist class in Omaha. This took place for a week in June & in September (80 hours)
- 8 officers attended "Training for Trainers" conducted by Jail Standards (40 hours)
- 1 officer attended Electronic Restraint Device class (5 hours)
- 1 staff member attended a make up class for Suicide Awareness (6 hours)
- 1 employee attended a make up CPR class (8 hours)
- 2 staff members attended a Direct Supervision class (8 hours)