

# Lancaster County Board of Corrections

July 21, 2016

LANCASTER COUNTY DEPARTMENT OF CORRECTIONS

:

Lancaster County Board of Corrections  
July 21, 2016

---

**Agenda**

**Thursday, July 21, 2016**

**9:00 a.m.**

- I. Approval of the January 21, 2016 meeting's minutes
  - a. January 21, 2016 minutes
  
- II. Population Statistics
  - a. Average Daily Population
  - b. Booking and Lodging Totals
  - c. Pre-Trial and Sentence Conversion Totals
  - d. Custodial Sanctions
  - e. Felonies Sentenced to Lancaster County
  - f. Drug Court Remand
  - g. Violation of House Arrest
  - h. Probation Revocation in Lancaster County
  
- III. Programming
  
- IV. Transportation
  
- V. Work Crews
  
- VI. Training

**MINUTES  
BOARD OF CORRECTIONS MEETING  
COUNTY-CITY BUILDING  
ROOM 113 - BILL LUXFORD STUDIO  
THURSDAY, JANUARY 21, 2016  
9:30 A.M.**

Board Members Present: Deb Schorr, Chair  
Larry Hudkins, Vice Chair  
Roma Amundson  
Bill Avery  
Todd Wiltgen

Others Present: Mike Thurber, Corrections Director  
Kerry Eagan, Chief Administrative Officer  
Gwen Thorpe, Deputy Chief Administrative Officer  
Dan Nolte, County Clerk  
Cori Beattie, Deputy County Clerk

The Chair called the meeting to order at 9:45 a.m.

**AGENDA ITEM**

**1 APPROVAL OF THE MINUTES OF THE NOVEMBER 5, 2015 MEETING**

**MOTION:** Hudkins moved and Wiltgen seconded approval of the minutes of the November 5, 2015 meeting. Avery, Wiltgen, Hudkins, Amundson and Schorr voted aye. Motion carried 5-0.

**2 POPULATION STATISTICS**

Mike Thurber, Corrections Director, discussed population statistics, referencing the following graphs (see agenda packet):

- Average Daily Population Comparison

Thurber said the average daily population for the last quarter of 2015 was 525, compared to 536 for the same period in 2014. He said that is a 58% increase when compared to 2000. The facility is currently at 79% of operational capacity.

- Booking and Lodging Totals

Thurber said average bookings were down 5.8% and average lodgings were down 3.5% this quarter, compared to the same time period last year. He noted 2,206 individuals were booked in this quarter and 1,634 were lodged.

- Pre-Trial/Sentence Conversion Release

Thurber said 7 individuals were on behavioral health/jail diversion, 25 on pre-trial release and 5 on sentence conversion this quarter.

### **3 PROGRAMMING**

Thurber said the Lancaster County Adult Detention Facility (LCADF) averaged 519 religious meetings, 109 substance abuse educational classes and 12-Step Program meetings, and 139 educational classes this quarter. He noted a tutor from Southeast Community College is available at the facility on Saturday mornings to work with inmates on educational deficiencies in preparation for taking the General Educational Development (GED) test. Other available classes include the areas of parenting, relationships, job/life skills and food preparation.

In response to Schorr's inquiry regarding homeless outreach, Thurber confirmed that CenterPointe has done an excellent job with this program since taking it over when the Community Mental Health Center was dissolved.

Work/court ordered release averaged 10-12/month for County Court and 18-22/month for District Court.

### **4 TRANSPORTATION**

Thurber reported on transports for court appearances (video and physical), off-site medical appointments and mental health referrals and transfers to other correctional facilities during this period. He added the number of monthly transports to the Crisis Center has diminished since moving to the new facility.

### **5 WORK CREWS**

Thurber said work crew activities this period included assisting the Lancaster Event Center with routine cleaning and event set-up; the County Engineer's Office with various projects; and the LCADF with routine grounds maintenance and snow removal.

## **6 TRAINING**

Thurber reported on orientation and in-service training for new staff, including correctional officers. He said 264 staff members (including permanent, contracted and volunteer positions) attended a three-hour diversity training.

Schorr said she also spoke with Thurber about the possibility of having one or two Correctional employees attend the Nebraska Association of County Officials (NACO) Institute of Excellence.

## **OTHER BUSINESS**

Thurber said it appears food prices will be increasing by 2¢ per meal based off the latest Consumer Price Index (CPI) adjustment. He added the Federal Communications Commission (FCC) has placed a limit of 21¢ per minute on inmate phone commissions. He said he and the County Attorney's Office will review the FCC ruling to see if it will impact the contract with Inmate Care Solutions (ICSolutions) for phone services.

In response to Hudkins' inquiry, Thurber noted the only capital outlay issues at the moment include the potential replacement of three ovens. He said he has been working with the vendor and the County Attorney's Office on options since the extended warranties are due to expire soon. He noted technology issues continue to arise but added the jail savings fund has helped cover most capital outlay expenses.

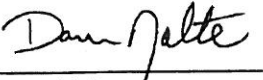
Avery questioned the progress made on suicide proofing jail cells. Thurber said the "tie off" problem has been resolved. He felt the key to prevention is observation (inside and outside of cells) and documentation.

In response to Amundson's inquiry, Thurber said since last September they are tracking the impacts of LB 605 (Provide, change and eliminate penalties, punishments, sentencing, restitution, probation, parole and crime victim provisions and provide for post-release supervision, grants and suspension of medical assistance for inmates). He noted ongoing concerns with Probation practices, i.e., sanctions versus alternatives. Thurber said LB 1094 (Change provisions relating to evidence, sentencing, certain criminal penalties, criminal mischief, assault, forgery and probation) was introduced this session to refine LB 605 but felt potential impacts from the original bill are still forthcoming.

Schorr noted the Joint Budget Committee (JBC), who provided funding for computers used for inmate education and training, will be touring the LCADF in the near future.

## ADJOURNMENT

**MOTION:** Amundson moved and Hudkins seconded to adjourn the meeting at 10:04 a.m. Avery, Wiltgen, Hudkins, Amundson and Schorr voted aye. Motion carried 5-0.

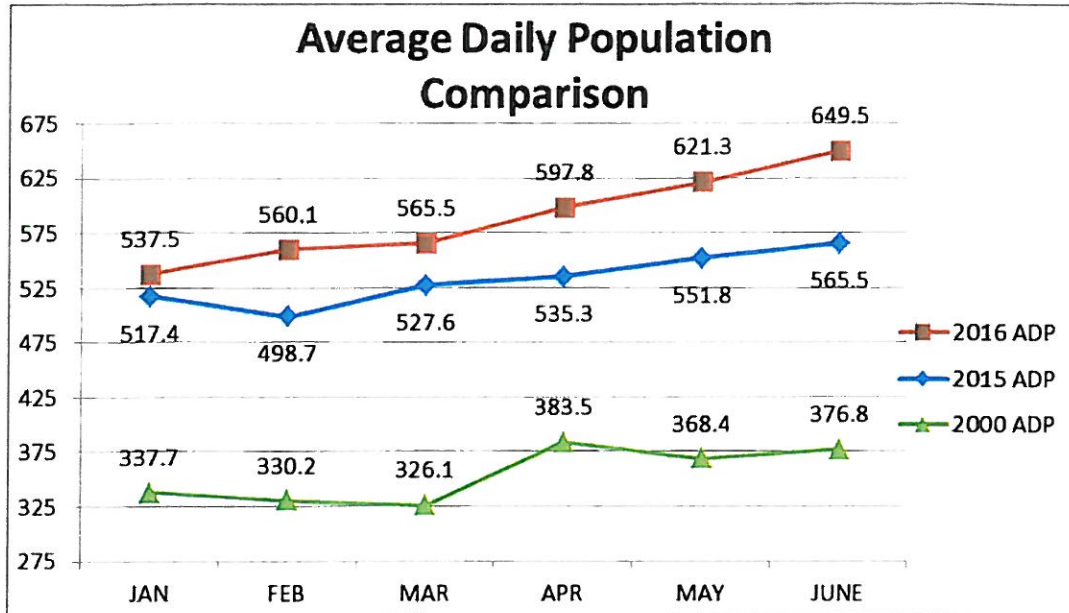
  
\_\_\_\_\_  
Dan Nolte  
Lancaster County Clerk



Lancaster County Board of Corrections  
July 21, 2016

II. Population Statistics (January-June, 2016)

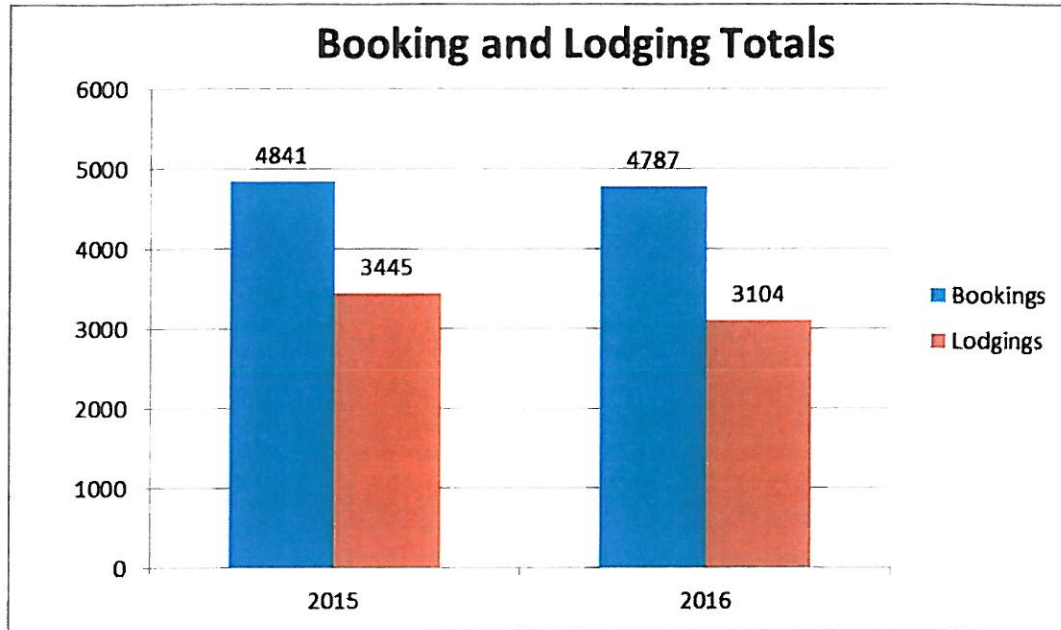
A.



- The average daily population (ADP) for this period of 2016 was 588.6 detainees compared to 532.7 for the same period in 2015. This is a 10.5% increase over FY15. This is a 66.4% increase when compared to 2000.
- This period ADP consumed 88.5% of the department's operational capacity of 665.
- Other population averages:
  - Felony Arrests-233.3
  - Misdemeanor Arrests-428.8
  - Felons Sentenced-20.0
  - Misdemeanors Sentenced-61.7
  - Held for other Jurisdictions-55.3
  - Percent Conditionally Released-35.7%

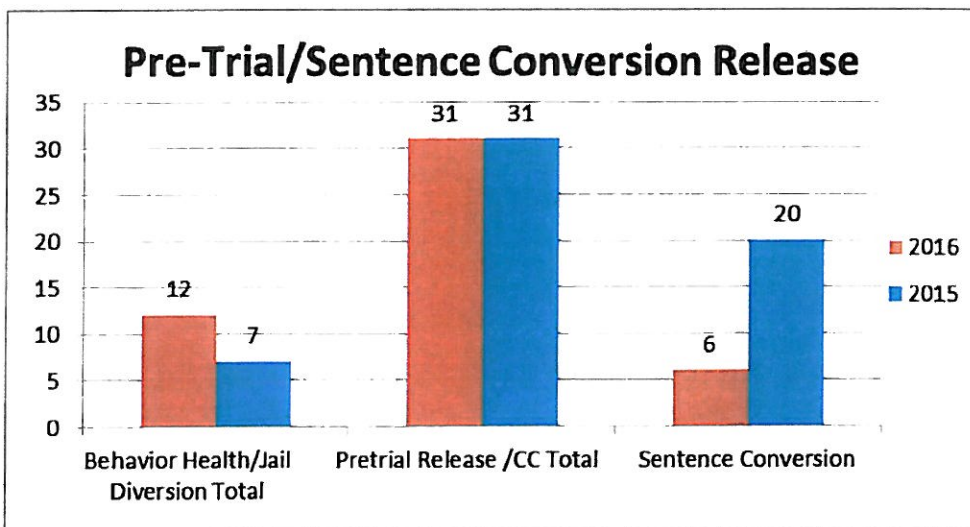
Lancaster County Board of Corrections  
July 21, 2016

**B.**



- Average bookings were down 1.1% compared to same time period last year.
- Average lodgings were down 9.9% compared to same time period last year.

**C.**





Lancaster County Board of Corrections  
July 21, 2016

---

- D. Custodial Sanctions
  - 56 Probationers will serve 869 days (15.5 days average per inmate)
- E. Felonies Sentenced to Lancaster County
  - Felony 3
    - 2 inmates @ 485 days (242.5 average days)
  - Felony 3A
    - 35 inmates @ 5,921 days (169.2 average days)
  - Felony 4
    - 43 inmates @ 10,991 days (255.6 average days)
  - ✓ **Total of 80 inmates will serve 17,397 days (217.5 average days)**
- F. Drug Court Remand-
  - 30 drug court participants will serve 371 days (12.4 average days)
- G. Violation of House Arrest-
  - 15 offenders served 241 days (16.1 average days)
- H. Probation Revocation in Lancaster County-
  - 3 revoked probationers will serve 407 days (135.7 average days)

**III. Programming (January-June, 2016)**

- Religious (1,052 Meetings)
  - Bible Study- 357
  - Church Service- 361
  - Discipleship Mentoring- 226
  - 1:1 Religious Counseling -108

# Lancaster County Board of Corrections

## July 21, 2016

---

- Substance Abuse Education & 12 Step Programs (223 Meetings)
  - The Bridge Behavioral Health Substance Abuse Education for Men- 46
  - St. Monica's Substance Abuse Education for Women- 23
  - AA Meetings- 110
  - NA Meetings- 44
- Educational Programs (374 classes)
  - GED Classes-193
  - Lincoln Literacy- 22
  - Food Prep Skills- 38
  - Christian Heritage Parenting- 43
  - Christian Heritage Within My Reach (Domestic Relationships Ed)- 42
  - Released & Restored Job/Life Skills- 31
- Transition Planning (182 inmate contacts)
  - V.A. Outreach- 161
  - Center Pointe Dual Diagnosis Homeless Outreach- 21
- Work/Court Ordered Release Averages per Month
  - January
    - 10 - County Court
    - 18 - District Court
  - February
    - 8 - County Court
    - 23 - District Court

# Lancaster County Board of Corrections

## July 21, 2016

---

- March
  - 21 - County Court
  - 17 - District Court
- April
  - 25 – County Court
  - 23 – District Court
- May
  - 19 – County Court
  - 29 - District Court
- June
  - 18 – County Court
  - 29 – District Court
- Other
  - Turning Pages Book Club for Women -7 classes
  - TABE (Test of Adult Basic Education)-24 classes
  - GED Practice/Subject Tests- 82
  - Food Handler Permit Testing- 12
  - Tax Preparation Assistance for Inmates-2 classes/9 inmates assisted
  - Online Work Seek-4 inmates
  - Rent Wise Program-5 classes (start up of new program/June, 2016)

Lancaster County Board of Corrections  
July 21, 2016

---

**IV. Transportation (January-June, 2016)**

- Court Appearances
  - County Court
    - 3,957 Video Appearances
    - 1,214 Physical Appearances
  - District Court
    - 266 Video Appearances
    - 1,002 Physical Appearances
- Off-Site Transports
  - State Department of Corrections
    - 134 to Diagnostic and Evaluation
    - 24 to Nebraska Center for Women (York)
  - Medical
    - 61 to Hospital
    - 98 to Clinical Appointments
  - Mental Health
    - 39 to Lincoln Regional Center
    - 6 to Crisis Center

**V. Work Crews (January-June, 2016)**

- Lancaster County Event Center
  - Crews of 4-6 inmates worked for 6 days cleaning horse stalls and setting up for various events. (March 2016)

# Lancaster County Board of Corrections

## July 21, 2016

---

- Crews of 6 inmates cleaned horse stalls & set up for various events April-June, providing services on 16 separate occasions.
- County Engineer Crew-
  - A crew of 4 inmates assisted with various projects for 17 days. (March)
  - Three inmates assisted with shop cleaning, yard work & general duties for the County Engineer. Crews were available on 33 occasions from April-June.
- Adult Detention Facility (ADF)
  - Inmate work crews worked on ADF grounds, completing snow/ice removal duties on facility grounds. (January/February)
  - Inmate crews worked on ADF grounds, clearing the parking lots of sand & salt for two days. (March)
  - From April-June, inmate crews worked on maintaining facility grounds such as trimming grass, picking up trash, pulling weeds, pruning bushes & cleaning the warehouse.
- Road Crews
  - Up to 4 inmates assisted with county road trash pickup, covering approximately 246 miles and collected 423 bags of trash. Approximately 27 trips were made.

## **VI. Training (January-June, 2016)**

- Initial Orientation
  - 8 full time & 2 on-call Correctional Officers (80 hours)
  - 1 Maintenance staff (40 hours)
  - 3 Medical staff (32 hours)
  - 2 Programs staff (48 hours)

# Lancaster County Board of Corrections

## July 21, 2016

---

- 9 Officers and 2 Sergeants attended our training academy (80 hours)
- 13 Officers and 1 Sergeant attended a make-up orientation class (32 hours)

### ➤ In-Service Training

- 5 Staff members attended non-security use of force class (3 hours)
- 211 Staff members attended CPR recertification class (8 hours)
- 1 Officer attended Suicide Awareness & Searches class (8 hours)
- 211 Staff members attended the Direct Supervision in service class (8 hours)
- 1 Staff member attended a Mental Health First Aid Class (8 hours)
- 6 Officers attended a make up CPR class (8 hours)

### ➤ Other Training

- 10 Officers completed the field training program (32 hours)
- 20 Sergeants attended the FTO program/supervisor review class (1 hour)
- 20 Sergeants attended a supervisor's direct supervision class (2 hours)
- 20 Sergeants attended a supervisor's booking training class (2 hours)
- 2 Officers attended the FTO training coach review class (1 hour)
- 2 Sergeants attended "Sergeant Training" at ADF (32 hours)
- 2 Staff members attended "Critical Incident Training" in Omaha (40 hours)
- 4 Staff members attended "LPD's Active Shooter's Class" (8 hours)
- 4 Supervisors attended Continuum training, "Strength Based Management" (2 hours)
- 1 Staff member attended a human resource class on work related injuries (1 hour)
- 11 Staff members completed on the job training (80 hours)
- 2 Staff members attend the National Gang Conference (32 hours)

# Lancaster County Board of Corrections

July 21, 2016

---

- 19 Staff members attended the Jail Standards Conference (16 hours)
- 2 Staff members attended the AJA webinar on Consular Notification (1 hour)
- 3 Staff members attended an inmate mental health class (14 hours)
- 2 Staff members went to a inmate mental health class (8 hours)
- 3 staff attended the Work Place Violence Class through Continuum, along with the "EAP and You" class (2 hours each class)
- 2 Staff members attended a Critical Incident Stress Management Class (8 hours)