

Lancaster County Board of Corrections

November 5, 2015

LANCASTER COUNTY DEPARTMENT OF CORRECTIONS

:

Lancaster County Board of Corrections
November 5, 2015

Agenda

Thursday, November 5, 2015

8:30 a.m.

- I. Approval of the July 16, 2015 meeting's minutes
 - a. July 16, 2015 minutes

- II. Population Statistics
 - a. Average Daily Population
 - b. Booking and Lodging Totals
 - c. Pre-Trial and Sentence Conversion Totals

- III. Programming

- IV. Transportation

- V. Work Crews

- VI. Training

- VII. 605 Building

- VIII. Work Release Program Highlights

**MINUTES
BOARD OF CORRECTIONS MEETING
COUNTY-CITY BUILDING
ROOM 113 - BILL LUXFORD STUDIO
THURSDAY, JULY 16, 2015
8:30 A.M.**

Board Members Present: Deb Schorr, Chair
Todd Wiltgen, Vice Chair
Larry Hudkins
Roma Amundson
Bill Avery

Others Present: Mike Thurber, Corrections Director
Kerry Eagan, Chief Administrative Officer
Gwen Thorpe, Deputy Chief Administrative Officer
Ann Taylor, County Clerk's Office

The Chair called the meeting to order at 8:35 a.m.

AGENDA ITEM

1 APPROVAL OF THE MINUTES OF THE APRIL 23, 2015 MEETING

MOTION: Wiltgen moved and Hudkins seconded approval of the minutes of the April 23, 2015 meeting. Schorr, Wiltgen, Avery, Hudkins and Amundson voted aye. Motion carried 5-0.

2 POPULATION STATISTICS (APRIL-JUNE, 2015)

Mike Thurber, Corrections Director, discussed population statistics, referencing the following graphs (see agenda packet):

- Average Daily Population
- Booking and Lodging Totals
- Pre-Trial and Sentence Conversion Totals

Thurber said the average daily population for this quarter in 2015 was 550, compared to 596 for the same period in 2014. He said that is a 46% increase when compared to 2000. Thurber noted 27% of the population this quarter was conditionally released and said the goal is to get to 33%.

Thurber said average bookings were down 13% and average lodgings were down 17% this quarter, compared to the same period in 2014. He said 2,400 individuals were booked in this quarter and 1,740 were lodged.

3 PROGRAMMING (APRIL-JUNE, 2015)

Thurber said the Lancaster County Adult Detention Facility (LCADF) averaged 220 religious meetings, 41 substance abuse educational classes and 12-Step Program meetings, and 71 educational classes a month during this quarter. He said 19 individuals earned a food handler permit through participation in the Food Preparation Program and said they would like to add a second class.

4 TRANSPORTATION (APRIL-JUNE, 2014)

Thurber reported on transports for court appearances (video and physical), off-site medical appointments and mental health referrals and transfers to other correctional facilities during this period.

5 WORK CREWS (APRIL-JUNE, 2015)

Thurber said work crew activities this period included assisting the Election Commissioner during the Primary and General Elections, helping at the Lancaster Event Center with general cleaning and maintenance, and assisting County Engineering staff with various projects.

6 TRAINING (APRIL-JUNE, 2015)

Thurber said 13 Correctional Officers attended the training academy (80-hour program). He also reported on orientation and in-service training this quarter.

7 605 BUILDING

Thurber said they have been working with the Public Building Commission (PBC) and Accurate Controls on setting up cameras and electronic controls.

OTHER BUSINESS

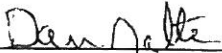
Wiltgen asked Thurber to discuss the facility's relationship with federal law enforcement officials involving the immigration status of offenders. Thurber said the practice has been to detain offenders who cleared their local charges but had a hold from a Department of Homeland Security Immigration Detainer Form I-247. He said they have been advised the I-247 is not a federal warrant and there could be liability if the hold is

maintained. A new program, the Priority Enforcement Program (PEP), may change that format and allow them to detain with a notification.

Wiltgen asked Joe Kelly, County Attorney, who was in attendance to address the issue of Lancaster County being labeled a "sanctuary county" on the Immigration Policy Center's (IPC's) website. Kelly said that label implies the County does not work with the Immigration and Customs Enforcement (ICE) or honor ICE holds. He said that is not the case. Kelly said it stems from some courts on the federal level saying a one-page detainer that is not signed by a judge is not the equivalent of a warrant. That has resulted in certain restrictions on how long a hold can last or whether or not there can be a hold. He said they continue to seek clarification on the matter and plan to meet with ICE representatives later today.

8 ADJOURNMENT

There being no further business, the Chair adjourned the meeting at 8:59 a.m.

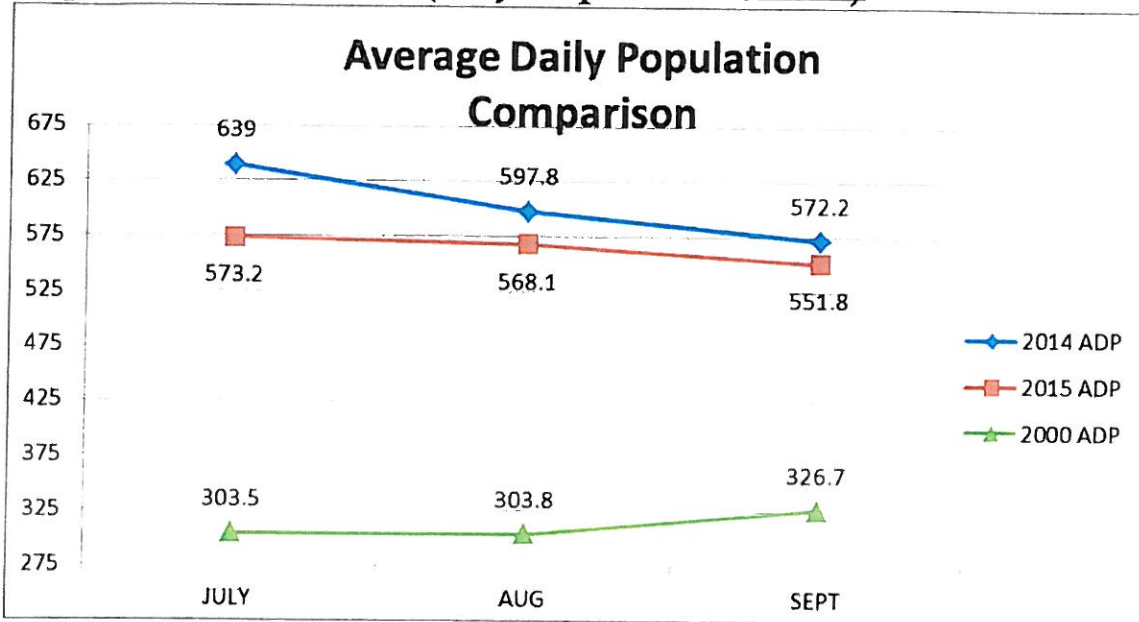


Dan Nolte
Lancaster County Clerk



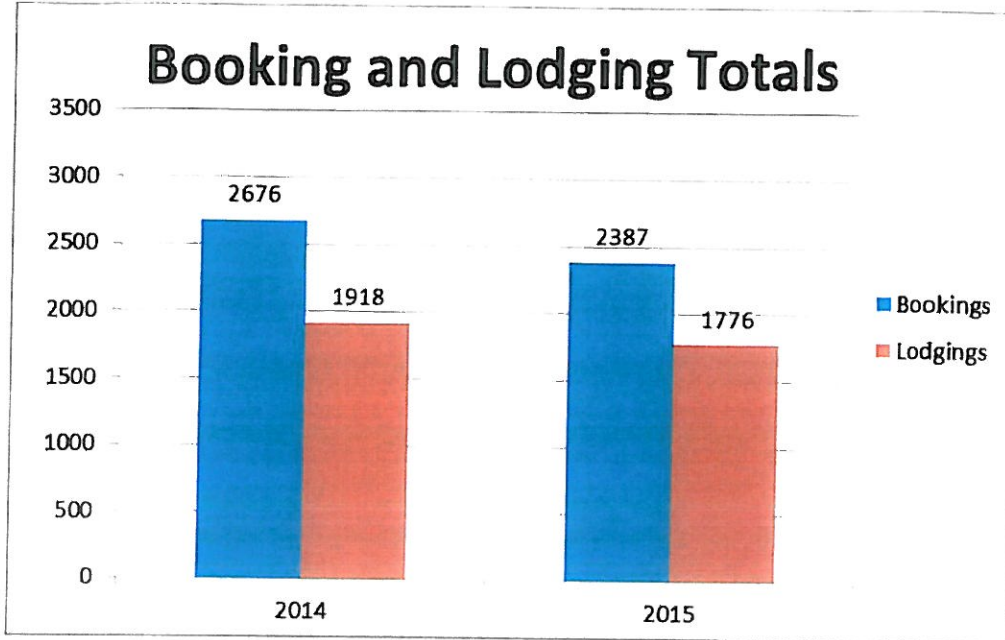
Lancaster County Board of Corrections
November 5, 2015

Population Statistics (July-September, 2015)

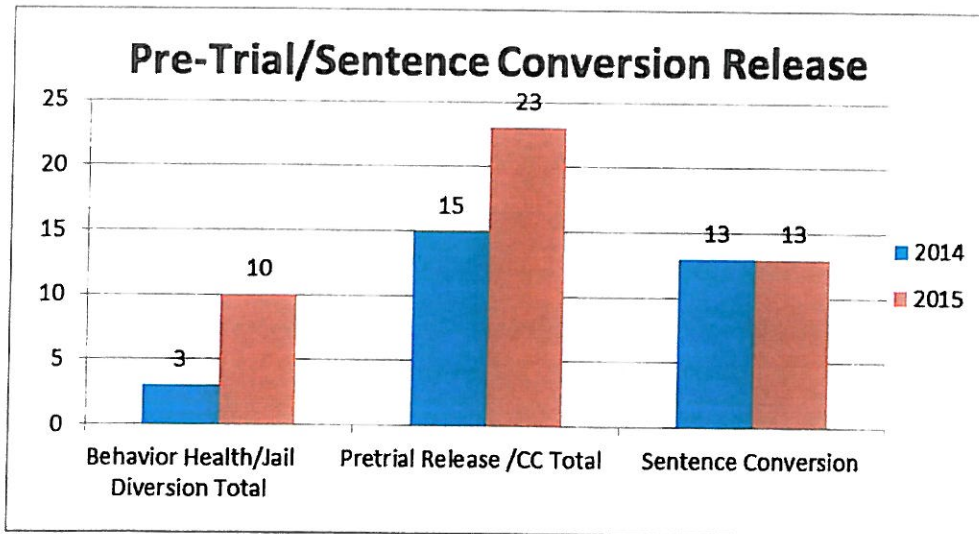


- The average daily population (ADP) for this period of 2015 was 564.4 detainees compared to 603.0 for the same period in 2014.
- This is an 81.3% increase when compared to 2000.
- This period ADP consumed 84.9% of the department's operational capacity.
- Other population averages during this past quarter:
 - Felony Arrests-216.0
 - Misdemeanor Arrests-463.3
 - Felons Sentenced-12.7
 - Misdemeanors Sentenced-48.7
 - Held for other Jurisdictions-55.0
 - Percent Conditionally Released-25.8%

Lancaster County Board of Corrections
November 5, 2015



- Average bookings were down 10.8% compared to same time period last year.
- Average lodgings were down 7.4% compared to same time period last year.



Lancaster County Board of Corrections
November 5, 2015

➤ **Programming (July-September, 2015)**

➤ Religious (491 Meetings)

- Bible Study- 161
- Church Service- 186
- Discipleship Mentoring- 92
- 1:1 Religious Counseling -52

➤ Substance Abuse Education & 12 Step Programs (123 Meetings)

- The Bridge Behavioral Health Substance Abuse Education for Men- 13
- St. Monica's Substance Abuse Education for Women- 13
- AA Meetings- 74
- NA Meetings- 23

➤ Educational Programs (132 classes)

- GED Classes- 53
- Lincoln Literacy- 9
- Food Prep Skills- 19
- Christian Heritage Parenting- 20
- Christian Heritage Within My Reach (Domestic Relationships Ed)- 20
- Released & Restored Job/Life Skills- 11

Lancaster County Board of Corrections

November 5, 2015

- Transition Planning (83 inmate contacts this quarter)
 - V.A. Outreach- 70
 - Center Pointe Dual Diagnosis Homeless Outreach- 13
- Work/Court Ordered Release Averages per Month
 - July
 - 16 - County Court
 - 30 - District Court
 - August
 - 16 - County Court
 - 33 - District Court
 - September
 - 14 - County Court
 - 28 - District Court
- Other
 - Turning Pages Book Club for Women -4 classes
 - TABE (Test of Adult Basic Education)-8 classes
 - GED Practice/Subject Tests- 40
 - Food Handler Permit Testing- 9

Lancaster County Board of Corrections
November 5, 2015

Transportation (July-September, 2015)

➤ Court Appearances

- County Court
 - 1984 Video Appearances
 - 593 Physical Appearances
- District Court
 - 110 Video Appearances
 - 591 Physical Appearances

➤ Off-Site Transports

- State Department of Corrections
 - 65 to Diagnostic and Evaluation
 - 8 to Nebraska Center for Women (York)
- Medical
 - 37 to Hospital
 - 63 to Clinical Appointments
- Mental Health
 - 18 to Lincoln Regional Center
 - 3 to Crisis Center

Lancaster County Board of Corrections
November 5, 2015

Work Crews (July-September, 2015)

- Lancaster County Event Center
 - One officer supervised crews of 4-6 inmates for 13 days cleaning & setting up horse stalls, installing & painting fencing along with other landscaping duties to prepare for the Super Fair. (July)
 - An officer supervised 4-6 inmates for 8 days cleaning horse stalls & and doing final cleanup of the fair. (August)
 - For 6 days, 4-6 inmates did routine cleaning of horse stalls and setting up for other events as needed. (September)
- County Engineer Crew-
 - A crew of 3 inmates assisted for 14 days with various projects. (July)
 - A crew of 3 inmates worked on various projects for 15 days. (August)
 - A crew of 3 inmates worked 17 days. (September)
- ADF/Other
 - Three inmate work crew members worked on ADF grounds, completing landscaping duties in 18 days. An officer supervised 2 inmates for 3 days picking up food bank barrels from County/City agencies & transporting it to the Food Bank of Lincoln. (July)
 - Three inmates worked ADF grounds maintenance, working on landscaping for 10 days. (August)
 - Three inmates continued ADF grounds maintenance for 7 days. (September)

Lancaster County Board of Corrections
November 5, 2015

- County Road Litter Pick-Up 2015
 - Completed 154 miles of road cleanup in 26 trips.
 - 240 inmate hours worked
 - 169.75 staff hours worked
 - 240 bags of litter removed

Training (July-September, 2015)

- Orientation
 - 9 Full-Time Correctional Officers (80 hours)
 - 1 On-Call Correctional Officer (80 hours)
 - 1 Kitchen staff (24 hours)
 - 1 Correctional Specialist staff (45 hours)
 - 1 Information Tech staff (19 hours)
 - 3 Medical staff (32 hours)
 - 1 Inmate Calling Solutions staff (32 hours)
- In-Service Training
 - 209 staff attended Emergency Procedures/Electronic Restraint Device in-service class (8 hours)
- Other Training
 - 10 Nurses attended First Aid/AED/CPR class (4 hours)

Lancaster County Board of Corrections

November 5, 2015

- 6 Correctional Officers attended OJT Program (80 hours)
- 2 Correctional Officers completed FTO Program (32 hours)
- 2 Correctional Officers completed OJT Program (80 hours)
- 5 staff attended Continuum training (2 hours)
- 2 Sergeants completed a training packet (8 hours)
- 4 Sergeants attended supervisor training (32 hours)
- 2 staff attended a webinar dealing with searches (2 hours)
- 3 staff attended a webinar dealing with religion in today's jail (2 hours)
- 2 staff attended Crisis Intervention class in Omaha (40 hours)
- 2 staff attended Re-Entry Employment Specialist Training in Grand Island (12 hours)
- 1 staff attended Re-Entry Specialist Training in Grand Island (8 hours)
- 63 support staff completed emergency procedures test/worksheet (2 hours)

605 Building

- On September 8, the Transport Division began operating out of the new court staging area.
- Extensive remodeling included installation of a new elevator & new security vestibules to connect the area to existing skywalks.
- The new area provides 20 separate cells, an officer work space, an equipment storage room, two staff restrooms and a modernized security system.
- The new area also provides more convenient access to the Courts and the vehicle sally port, which is twice the square footage of the old one.

Lancaster County Board of Corrections
November 5, 2015

Work Release Program

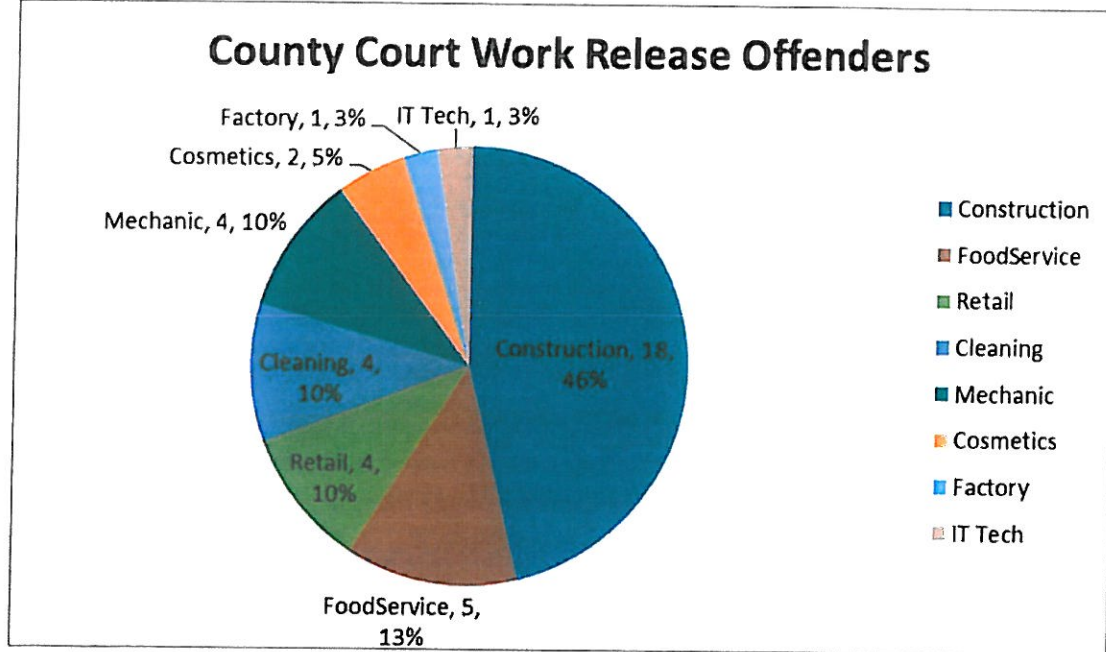
During the last quarter (July, August, September) we had 137 inmates employed in our Work Release Program through the Department of Corrections. In addition, there were 22 inmates participating in Treatment Release, 4 in School Release, and 3 who had supervised family visits through Department of Health and Human Services (DHHS) contracting agencies.

Work Release:

County Court had 39 inmates participating in the Work Release Program that were sentenced through County Court, 34 males and 5 females. The average age was 33, the oldest inmate being 52 and the youngest, 23.

The breakdown of industries is:

- Construction- 18
- Food service-5
- Retail-4
- Cleaning-4
- Mechanic-4
- Cosmetics-2
- Factory-1
- IT support-1



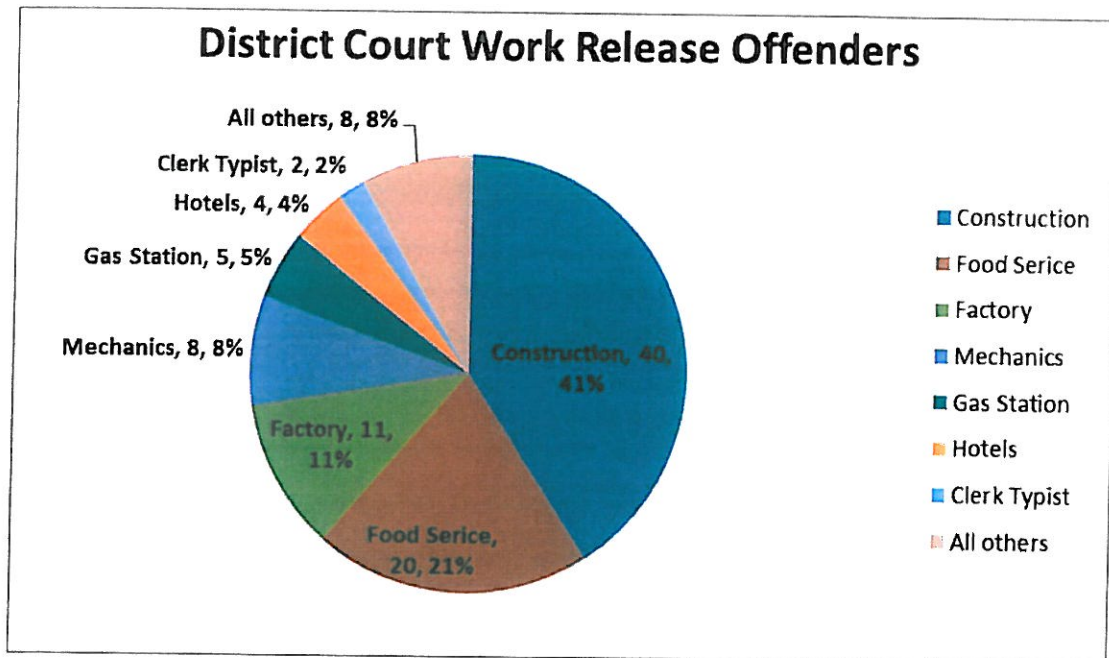
Lancaster County Board of Corrections

November 5, 2015

District Court had 98 inmates participating in the Work Release Program that were sentenced, 88 males and 10 females. The average age was 33.5, with the oldest inmate being 73 and the youngest, 20.

The breakdown of industries in which they work is:

- Construction- 40
- Food Service- 20
- Factory-11
- Mechanics-8
- Convenience store/gas station-5
- Hotels-4
- Clerk Typist- 2
- Cosmotology-1
- IT Support -1
- Radio Repair-1
- Staffing Services-1
- Other-4



Lancaster County Board of Corrections

November 5, 2015

School Release:

We had 4 inmates on School Release. Two were attending Southeast Community College, 1 attending both Southeast Community College and the University of Nebraska-Lincoln and 1 attending Metropolitan Community College. Three of the 4 males had outside employment.

Supervised Family Visits:

Three inmates had supervised visits in the community through DHHS, 2 females and 1 male. These visits are supervised by Pathfinder Support Services and Owens and Associates.

Treatment/Counseling Release:

Twenty two (22) inmates participated in Treatment/Counseling Release, 12 males and 10 females. The average age was 31. All 12 males and 2 of the females on Treatment/Counseling Release had outside employment.

