

LANCASTER COUNTY CORRECTIONS DEPARTMENT

605 SOUTH TENTH STREET
LINCOLN, NE 68508
(402) 441-7530
FAX: 441-8946

MICHAEL THURBER, DIRECTOR

LANCASTER COUNTY CORRECTIONS BOARD

-AGENDA-

January 26, 2012
Thursday @ 9:30

LANCASTER COUNTY CORRECTIONS BOARD

- AGENDA -

**Thursday, January 26, 2012
9:30 a.m.**

I. Approval of the October 13, 2011 Meeting

II. Population Statistics

- A. Population Comments
- B. Population Graphs-Appendix 1
- C. Fiscal Year 2011 Monthly Statistical Report-Appendix 2
- D. Fiscal Year 2012 Monthly Statistical Report-Appendix 3

III. Department Activities

- A. Training
- B. Mental Health Jail Diversion Project
- C. Out of County Housing
- D. LCF/Work Crew Activities
- E. Programs Division
- F. Transition Activities

IV. Adjournment

Attachments.

- 1- Population Graphs
- 2- Monthly Status Reports
- 3- October 13, 2011 Minutes

Lancaster County Corrections Board
Meeting of Thursday, January 26, 2012

I. APPROVAL OF MINUTES- Oct. 13, 2011

II. POPULATION STATISTICS	<u>2010</u> Oct.-Dec.	<u>2011</u> Oct.-Dec.	Change
Average Daily Population	484.9	507.3	+ 4.6%
JAIL/out of county	340.5	359.4	+ 5.5%
LCF	144.3	147.9	+ 2.5%
Total Bookings	2,375.0	2,251.0	- 5.2%
Average per month	791.7	750.3	
Total Lodgings	1,573.0	1,530.0	- 2.7 %
Average per month	524.3	510.0	
Platte County Inmate Housing (Sept. '05)			
Average per month	7.5	14.7	
Butler County Inmate Housing (May '07)			
Average per month	9.3	15.7	
Saline County Inmate Housing (Aug. 2010)			
Average per month	4.3	14.7	
Saunders Co. Inmate Housing (July '09)			
Average per month	26.0	9.3	
Dawson Co. Inmate Housing (June '11)	<u>0.0</u>	<u>18.7</u>	
TOTAL ADP	47.1	73.0	+55.0%
Behavior Health/Jail Diversion Total	9.0	15.0	+6 individuals
Pretrial Release /CC Total	16.0	16.0	+0 individuals
Sentence Conversion/House Arrest Total	<u>20.0</u>	<u>15.0</u>	-5 individuals
TOTALS	45.0	46.0	+1 individuals

A. Population Comments

During this quarter, population grew by 4.6% percent. The largest increase was experienced at the downtown facility which represented a 5.5% overall growth from the same period of 2010.

We did see a decrease in the overall number of persons booked into the jail by 124 individuals over the same three month reporting period.

We experienced a large growth in out-of-county housing, with a 55% increase compared to the 2010 quarter. There were 46 inmates released to the Mental Health, Jail Diversion, Community Corrections Sentenced Conversion Program.

B. Population Graph (see attached) Appendix 1

The population graph shows the month to month populations for FY11 and FY12. This graph shows the facility's rated capacity as of 1991 when the Adult Detention Facility opened.

C. Monthly Statistical Report (see attached) Appendix 2 & 3-FY11, FY12

This is a statistical report giving the average daily population for both facilities, number of bookings, types of arrests and releases, as well as medical and mental health services provided.

III. DEPARTMENT ACTIVITIES

A. TRAINING

In the period from October 1 through December 31 2011, the training division handled approximately 380 applications for Correctional Officer positions. Orientation training was provided for nine new full-time and one new on-call officer, and three new nurses.

Seven Full-Time Officers completed the 12 week Field Training Officer Program, designed to help in the training of new officers in their first three months on the job. Seven other officers were still a part of the program by the end of this period.

Five of the department's supervisors attended a Drug and Alcohol training session conducted by the County Personnel Department.

Lieutenant Anderson spoke at the County Government Day. This is an event for High School students sponsored by the County Board. Lt. Anderson has also been involved in a committee that is developing policies for the new Adult Detention Facility.

Sgt Brandt is involved in a committee that is developing procedures for the transportation of inmates for the new Adult Detention Facility.

B. MENTAL HEALTH JAIL DIVERSION PROJECT

During this quarter, fifteen inmates were admitted into the project. Nine were in custody at the time they were accepted into the program. Of these fifteen, eight were also under Community Corrections supervision.

Eight inmates were also terminated from the program from October-December, 2011. Of these eight, five were under the supervision of Community Corrections. Also, of these eight individuals, four have not returned to jail custody. However, two of these four have active warrants.

Two inmates successfully completed the program this past quarter.

C. OUT OF COUNTY HOUSING

Lancaster County continues to house inmates in Platte, Butler, Saunders, Saline and Dawson counties due to overcrowding. During the months of October-December, 2011, we maintained an average population of 14.7 inmates in Platte County. During this same time period, 12 round trips were made, moving 55 inmates between the two facilities.

Butler County's average population for this time period was 15.7 with 59 inmates moved between the two facilities.

Saunders County's average population for this period was 9.3 with 47 inmates moved between the two facilities..

Saline County's average population for this period was 14.7 with 63 inmates moved between the two facilities.

Dawson County's average population from July-September, 2011 was 18.7 with 85 inmates moved between the two facilities.

In addition, the transport division transported 2,851 inmates to court, medical appointments or other locations. This required approximately 1,035 staff hours to complete.

D. LCF & WORK CREW ACTIVITIES

October 2011-Crews moved various items for the Health Department. The rest of the month involved painting at the Intake & Detention Facility, moving surplus auction items for three days, preparing air handlers for the winter months, and routine maintenance.

November 2011-Painting continued at both facilities along with routine maintenance during the month.

December 2011-Work crews spent several days with internal moves at Trabert Hall. They also spent two days moving the Art Council out of the County City Building to a new location. Routine maintenance and painting projects continued through the month.

In addition to the regular daily county shop worker, additional inmate labor was provided to the County Engineer this past quarter. Crews of three to four inmates have been under the supervision of the County Engineer, assisting with the installation of snow fencing including other road repairs. Approximately, 599 hours of inmate labor was provided from October-December, 2011.

E. PROGRAMS DIVISION

Correct Care Solutions' mental health practitioners coordinated an average of 45 evaluations per month with their psychiatrist in the months of October, November and December, 2011. An average of three inmates per month were placed into Emergency Protective Custody and transferred with a jail hold to the Crisis Center, due to meeting the criteria of mental illness and dangerousness to oneself or others. Mental health practitioners had an average of 663 contacts with inmates each month during this quarter, in which mental health, personal problems, or coping with confinement concerns were addressed.

Correctional Specialists and the Chaplain coordinated an average of 177 educational, self-help, and religious programs per month this quarter. This number represents programs offered at both the downtown Intake & Detention Facility and the Airpark Lancaster Correctional Facility.

The Work Release Coordinator reviewed an average of 123 court ordered release applications per month October through December, 2011. This number reflects both District and County Court applications. The average number of individuals on work release in these months was 28 .

F. TRANSITION ACTIVITIES

The transition team continue their work with numerous committees developing scenarios outlining the operational procedures that will be implemented for the new facility. These scenarios are being reviewed and finalized by a separate group consisting of the transition team, a correctional officer and IDF/ LCF administrators. These finalized scenarios will then be forwarded to individuals tasked with developing policies associated with them.

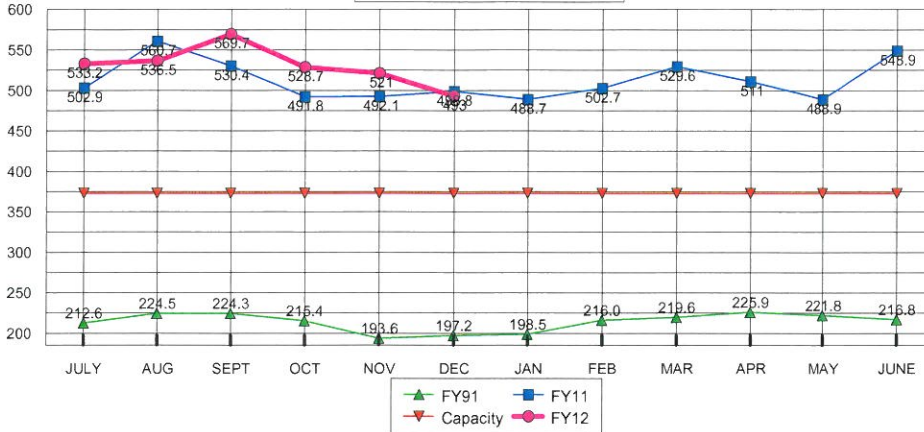
The entrance from "O" street has been completed. The fiber optic cables are nearly installed connecting the facility with the city/county network. An engineer has been selected to design the mobile radio system that will be installed into the building. His recommendation were presented to the department on January 23, 2012. A RFP will need to be developed once a design is agreed upon so installation of the necessary antennas and cables can be initiated.

A small team was sent to Accurate's Office in Wisconsin to review the work that has been completed on the electronics security system. The transition team identified and labeled every room that had some form of security electronic component and forwarded to Accurate to be identified on the touch screen. We also finalized a door identification system.

The transition team will continue with it scenario development. A list of training requirements is being generated and lesson plan development will be initiated in the next few months.

V. ADJOURNMENT

**TOTAL POPULATIONS
 FY91, FY11, FY12**



AVERAGES

FY12 TO DATE	530.4
FY11 SAME PERIOD	512.8
FY11 TO YR-END	512.2

3.4%	Change in FY12 to date over same period last year
3.5%	Change in FY12 to date over FY11 average to year-end

**JAIL-OFF SITE CO. POPULATION
 FY91, FY11, FY12**

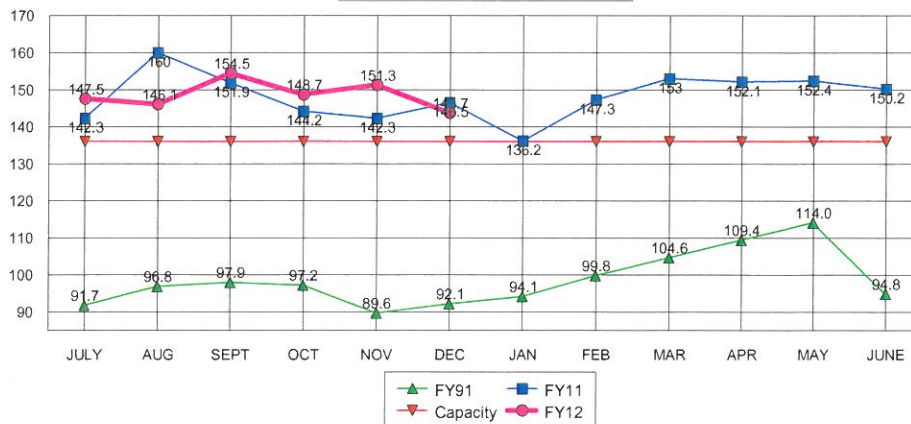


AVERAGES

FY12 TO DATE	381.7
FY11 SAME PERIOD	364.9
FY11 TO YR-END	364.0

4.6%	Change in FY12 to date over same period last year
4.9%	Change in FY12 to date over FY11 average to year-end

**LCF-ONLY POPULATION
 FY91, FY11, FY12**



AVERAGES

FY12 TO DATE	148.6
FY11 SAME PERIOD	147.9
FY11 TO YR-END	148.2

0.5%	Change in FY12 to date over same period last year
0.3%	Change in FY12 to date over FY11 average to year-end

**LANCASTER COUNTY CORRECTIONS DEPARTMENT
MONTHLY STATUS REPORT**

FISCAL YEAR 2011	2010						2011						AVERAGE TO DATE	TOTAL TO DATE
	JUL	AUG	SEP	OCT	NOV	DEC	JAN	FEB	MAR	APR	MAY	JUN		
Average Daily Population	287.3	305.0	276.9	293.2	296.2	290.9	282.8	282.8	295.4	286.0	279.8	307.4	290.3	N/A
High for Month	302	321	317	315	316	313	303	311	334	332	316	327	317.3	N/A
Low for Month	272	291	252	272	285	257	270	258	276	257	259	289	269.8	N/A
Platte County ADP	10.0	9.0	9.0	9.0	7.0	6.4	7.1	7.9	9.2	6.6	7.0	31.4	10.0	N/A
Butler County ADP	14	14	16	9	9	10	11	16	18	10	8	13	12.3	N/A
Saline County ADP	0	11	15	5	6	2	2	0	2	4	4	14	5.3	N/A
Saunders County ADP	43	56	54	24	22	32	40	39	45	44	32	19	37.4	N/A
Dawson County ADP												8.2	8.2	N/A
Total Number of Bookings	828	945	856	821	818	736	761	731	845	745	839	895	818.3	9,820
Felony Arrests	157	176	160	173	177	161	147	144	176	152	168	192	165.3	1,983
Misdemeanor Arrests	540	609	568	527	503	466	478	432	497	465	509	556	512.5	6,150
Felons Sentenced	22	25	18	22	11	15	29	19	23	15	22	23	20.3	244
Misdemeanants Sentenced	58	70	58	55	62	51	48	78	78	58	73	68	63.1	757
Held for Other Jurisdictions	51	65	52	44	65	43	59	58	71	53	67	56	57.0	684
Total Conditionally Released	275	298	290	299	291	212	239	219	284	275	270	281	269.4	3,233
Percent Conditionally Released	33.21%	31.53%	33.88%	36.42%	35.57%	28.80%	31.40%	29.96%	33.61%	36.91%	32.18%	31.40%	32.9%	32.9%
Pre-Arrestment Releases	163	174	202	188	159	136	140	123	175	165	181	176	165.2	1,982
Court Disposition Releases	112	124	88	111	132	76	99	96	109	110	89	105	104.3	1,251
Total of Individuals Lodged	553	647	566	522	527	524	522	512	561	470	569	614	548.9	6,587
LANCASTER CORRECTIONAL FACILITY														
Average Daily Population	142.3	160.0	151.9	144.2	142.3	146.5	136.2	147.3	153.0	152.1	152.4	150.2	148.2	N/A
High for Month	164	165	159	152	154	155	147	156	156	155	157	155	156.3	N/A
Low for Month	131	150	146	130	130	137	128	134	148	147	145	144	139.2	N/A
County Work Release													ERR	0
District Work Release													ERR	0
Estimated Value of Inmate Labor	\$3,589	\$3,683	\$3,415	\$3,698	\$3,248	\$3,168	\$3,785	\$4,336	\$5,532	\$4,365	\$4,488	\$4,481	\$3,982	\$47,786
MEDICAL/MENTAL HEALTH SERVICES														
Referred to Jail Physician	38	50	34	27	36	37	29	25	20	23	6	93	35	418
Referred to Mental Health/LRC	1	3	2	6	3	6	3	2	1	0	2	1	3	30
Transferred to Emergency Room	3	4	5	5	6	8	6	5	4	6	5	14	6	71

**LANCASTER COUNTY CORRECTIONS DEPARTMENT
MONTHLY STATUS REPORT**

FISCAL YEAR 2012

	2011						AVERAGE TO DATE	TOTAL TO DATE
	JUL	AUG	SEP	OCT	NOV	DEC		
Average Daily Population	294.7	295.7	309.2	288.4	286.8	284.0	293.1	N/A
High for Month	311	319	322	315	308	307	313.7	N/A
Low for Month	270	272	293	267	270	273	274.2	N/A
Platte County ADP	26.0	22.5	25.5	22.6	14.2	7.2	19.7	N/A
Butler County ADP	16.6	21.1	21.7	17.3	18.1	11.5	17.7	N/A
Saline County ADP	16.8	14.5	15.5	15.7	13.9	14.0	15.1	N/A
Saunders County ADP	12.5	11.6	15.2	9.5	10.1	8.4	11.2	N/A
Dawson County ADP	13.5	19.2	21.2	20.5	19.2	16.4	18.3	N/A
Total Number of Bookings	867	900	792	717	770	764	801.7	4,810
Felony Arrests	148	184	145	165	161	193	166.0	996
Misdemeanor Arrests	536	576	507	444	483	489	505.8	3,035
Felons Sentenced	25	19	17	17	19	9	17.7	106
Misdemeanants Sentenced	55	65	60	48	63	59	58.3	350
Held for Other Jurisdictions	53	54	62	43	44	42	49.7	298
Total Conditionally Released	262	275	267	219	265	237	254.2	1,525
Percent Conditionally Released	30.22%	30.56%	33.71%	30.54%	34.42%	31.02%	31.7%	31.7%
Pre-Arrestment Releases	151	173	163	140	150	151	154.7	928
Court Disposition Releases	111	102	104	79	115	86	99.5	597
Total of Individuals Lodged	605	625	525	498	505	527	547.5	3,285
LANCASTER CORRECTIONAL FACILITY								
Average Daily Population	147.5	146.1	154.5	148.7	151.3	143.7	148.6	N/A
High for Month	154	153	160	160	159	150	156.0	N/A
Low for Month	140	135	142	134	138	134	137.2	N/A
County Work Release					7	3	5.0	10
District Work Release					23.5	22.5	23.0	46
Estimated Value of Inmate Labor	\$4,720	\$4,452	\$2,762	\$5,119	\$5,488	\$5,757	\$4,716	\$28,297
MEDICAL/MENTAL HEALTH SERVICES								
Referred to Jail Physician	63	54	70	74	55	80	66	396
Referred to Mental Health/LRC	3	3	3	4	2	4	3	19
Transferred to Emergency Room	12	16	9	9	7	14	11	67

APPENDIX 3