

# LANCASTER COUNTY CORRECTIONS DEPARTMENT

---

605 SOUTH TENTH STREET  
LINCOLN, NE 68508  
(402) 441-7530  
FAX: 441-8946

MICHAEL THURBER, DIRECTOR

## LANCASTER COUNTY CORRECTIONS BOARD

### -AGENDA-

February 3, 2011  
Thursday @ 9:00

**LANCASTER COUNTY CORRECTIONS BOARD**

**- AGENDA -**

**Thursday, Feb. 3, 2011**

**9:00 a.m.**

**I. Approval of the November 18, 2010 Meeting**

**II. Population Statistics**

- A. Population Comments
- B. Population Graphs-Appendix 1
- C. Fiscal Year 2011 Monthly Statistical Report-Appendix 2
- D. Fiscal Year 2010 Monthly Statistical Report-Appendix 3
- E. Calendar Year 2010 Monthly Statistical Report-Appendix 4

**III. Department Activities**

- A. Training
- B. Mental Health Jail Diversion Project
- C. Out of County Housing
- D. LCF/Work Crew Activities
- E. Programs Division
- F. Transition Activities

**IV. New Business**

**V. Adjournment**

Attachments.

- 1- November 18, 2010 Minutes
- 2- Population Graphs
- 3- Monthly Status Reports
- 4- Community Service Program

**Lancaster County Corrections Board**

Meeting of Thursday, Feb. 3, 2011

**I. APPROVAL OF MINUTES- November 18, 2010**

<b>II. POPULATION STATISTICS</b>	<b><u>2009</u></b>	<b><u>2010</u></b>	<b>Change</b>
	<b>Oct.-Dec.</b>	<b>Oct.-Dec.</b>	
<b>Average Daily Population</b>	478.6	484.9	+ 1.3%
JAIL/out of county	343.9	340.6	- 1.0 %
LCF	134.7	144.3	+ 7.2 %
<b>Total Bookings</b>	2,252.0	2,375.0	+ 5.5%
Average per month	750.7	791.7	
<b>Total Lodgings</b>	1,512.0	1,573.0	+ 4.0%
Average per month	504.0	524.3	
<b>Platte County Inmate Housing (Sept. '05)</b>			
Average per month	27.3	7.5	- 72.6%
<b>Butler County Inmate Housing (May '07)</b>			
Average per month	13.3	9.3	- 30.0%
<b>Saline County Inmate Housing (Aug. 2010)</b>			
Average per month	0.0	4.3	
<b>Saunders Co. Inmate Housing (July '09)</b>			
Average per month	26.0	26.0	N/C
<b>Behavior Health/Jail Diversion</b>	7.0	9.0	
<b>Pretrial Release /CC</b>	10.0	16.0	
<b>Sentence Conversion to House Arrest</b>	35.0	20.0	

**A. Population Comments**

During the 4<sup>th</sup> quarter of 2010, the department experienced an increase in our monthly booking totals. Historically, we see a decrease in our bookings/incarcerations during the 4<sup>th</sup> quarter.

One of our increases for the quarter was in the total number of inmates lodged after booking. We experienced a 4% increase in the number of individuals who remained in our custody.

Also during this quarter, we have made attempts to reduce the number of individuals housed outside of Lancaster County. Since our populations have been increasing in 2011, we are moving more inmates to out of county facilities. The department has housing agreements with six different counties. We are currently housing inmates in four of the those counties.

**B. Population Graph (see attached) Appendix 1**

The population graph shows the month to month populations for FY10 and FY11. This graph shows the facility's rated capacity as of 1991 when the Adult Detention Facility opened.

**C. Monthly Statistical Report (see attached) Appendix 2,3,4-, FY10, FY11, CY10**

This is a statistical report giving the average daily population for both facilities, number of bookings, types of arrests and releases, as well as medical and mental health services provided.

### **III. DEPARTMENT ACTIVITIES**

#### **A. TRAINING**

In the period from October to December, 2010, the training division handled approximately 438 applications for Correctional Officer positions. Orientation training was provided for one new officer and one nurse.

Two Full-Time Officers completed the 12 week Field Training Officer Program, designed to help in the training of new officers in their first three months on the job. Three other officers were still a part of the program by the end of this period.

In-service training classes were conducted for all uniformed staff members. The topics covered were Workplace Violence, Nebulizers, DNA Database Collection, Logging of Programs and Activities, Ethics and the Fundamentals of Running a Direct Supervision Unit. Another training class was conducted for five newer staff members on passing of medications. This class would qualify participants to be a Certified Medication Aide.

Lieutenant Anderson spoke at the County Government Day. This is an event for high school students sponsored by the County Board. Lt. Anderson has also been involved in a committee that is developing a new inmate management computer program, and a committee formulating policies for the new Adult Detention Facility.

Sgt. Brandt conducted 32 major disciplinary hearings during this period. He has been taking on the bulk of the hearings during times when the regular disciplinary hearing officer is absent.

#### **B. MENTAL HEALTH JAIL DIVERSION PROJECT**

The Jail Diversion Project accepted eight people into the program, terminated three and successfully closed three cases.

During this quarter, the program started to provide training to their clients called Rent Wise. Upon completion of the training, individuals will move up on the housing waiting lists. They recently had a request for a transfer from Buffalo County/Jail Diversion to Lancaster County's. This was for someone who was relocated after treatment. The project screened and accepted this individual into the program. Their charges will still be overseen and handled by Buffalo County but the Mental Health Project will provide them support for mental health and medication issues.

#### **C. OUT OF COUNTY HOUSING**

Lancaster County continues to house inmates in Platte, Butler, Saunders and Saline counties due to overcrowding. During the months of October, November and December,

we maintained an average population of 7.5 inmates in Platte County. During this same time period, six round trips were made, moving 19 inmates between the two facilities.

Butler County's average population for this time period was 9.3 with 34 inmates moved between the two facilities.

Saunders County's average population for this period was 26 with 118 inmates moved between the two facilities.

Saline County's average population for Oct.-Dec. 2010, was 4.3 with 16 inmates moved between the two facilities.

In addition, the transport division transported 2,749 inmates to court, medical appointments or other locations. This required approximately 1,267 staff hours to complete.

#### **D. LCF & WORK CREW ACTIVITIES**

October work crews moved items for the Election Commissioner . They also spent several days moving county surplus sale equipment to the auction site for the Purchasing Department as well as several other agencies. The rest of the month was spent doing fall maintenance along with painting and spraying ceilings at airpark. Please see the attached hours of service provided for Oct. 2010.

November consisted of helping the Election Commissioner during the November elections. Painting continued at LCF and new bunks were installed in the dorms.

December was spent repairing and spraying damaged ceilings due to the aging roof system, and continuing routine maintenance.

#### **E. PROGRAMS DIVISION**

The Correctional Specialists coordinated an average of 31 evaluations per month with the consulting psychiatrist in the months of October, November and December, 2010. An average of five inmates per month were placed into Emergency Protective Custody and transferred with a jail hold to the Crisis Center, due to meeting the criteria of mental illness and dangerousness to oneself or others. Correctional Specialists had an average of 496 contacts with inmates each month during this quarter, in which mental health, personal problems, or coping with confinement concerns were addressed.

In addition to attending to the mental health needs of inmates, and providing support and assistance in coping with confinement, Correctional Specialists and the Chaplain coordinated an average of 135 educational, self-help, and religious programs per month during this time period. This number represents programs offered at both the downtown Intake & Detention Facility and the Airpark Lancaster Correctional Facility.

The Work Release Coordinator reviewed an average of 146 court ordered release applications per month in October, November, and December. This number reflects both District and County Court applications. The average number of individuals on work release in these months was 32 .

#### **F. TRANSITION ACTIVITIES**

The transition planning continues to move forward. Since our last meeting, an in depth review of current policies has been started. Several policies will need to be created and many current policies will be updated to accommodate the new facility.

Work continues on the new Inmate Management System. The first round of testing has concluded and Information Services is making the necessary changes. Discussion concerning future needs at the new facility will begin in the near future.

Tours were conducted for department staff in November. Interest in the project remains high and many staff members took advantage of the opportunity to walk through the facility under construction.

The fiber optic project has moved into the agreement phase. The four parties who committed to the project are in the process of working through the contracts and governmental agreements. We are hoping this work can be completed sometime this summer.

As you know, our department proposed a staffing plan for the new facility. We have also been working with the sheriff's office to negotiate a plan for the transport of inmates between the courts and the new facility.

We have two sergeants working on the keying plan for the architectural doors throughout the building. We have made good progress but work continues.

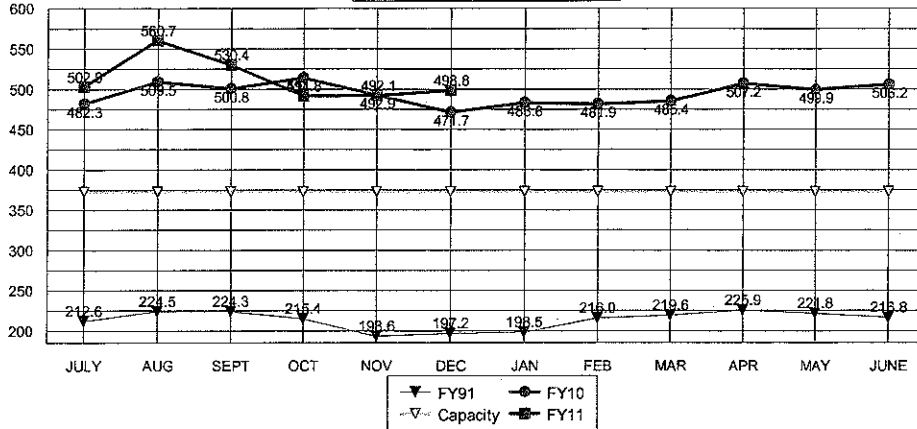
We also have started looking at the sign needs for the new facility. An officer has began reviewing the sign design as submitted and altering it to better meet our needs.

#### **IV. NEW BUSINESS**

Good News Jail and Prison Ministries is currently recruiting a replacement chaplain for Randy Bartelt who has resigned to take a similar position with he Nebraska State Department of Corrections.

#### **V. ADJOURNMENT**

**TOTAL POPULATIONS  
 FY91, FY10, FY11**

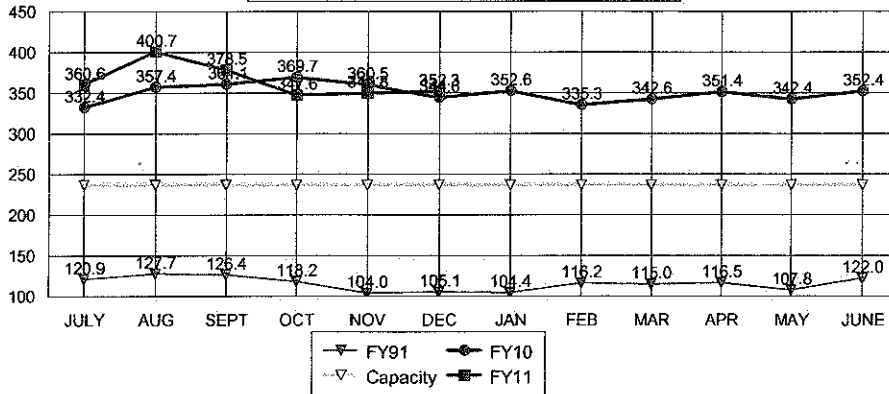


AVERAGES

FY11 TO DATE	512.8
FY10 SAME PERIOD	495.3
FY10 TO YR-END	494.6

3.5%	Change in FY11 to date over same period last year
3.7%	Change in FY11 to date over FY10 average to year-end

**JAIL-OFF SITE CO. POPULATION  
 FY91, FY10, FY11**

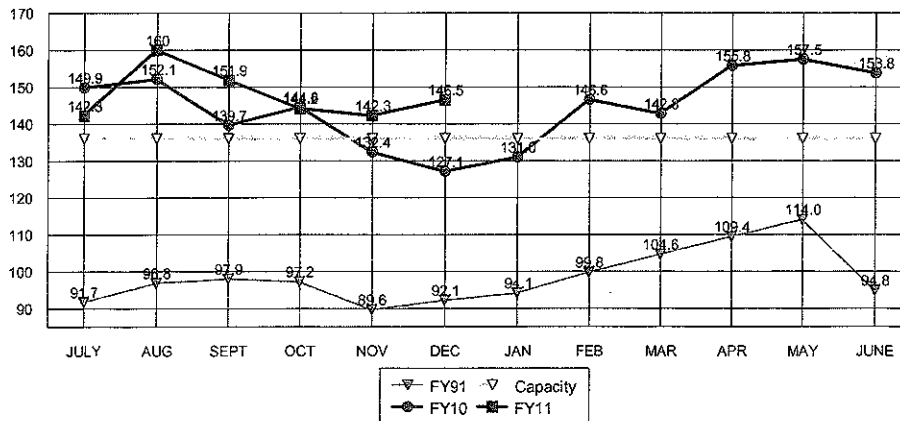


AVERAGES

FY11 TO DATE	364.9
FY10 SAME PERIOD	354.3
FY10 TO YR-END	350.2

3.0%	Change in FY11 to date over same period last year
4.2%	Change in FY11 to date over FY10 average to year-end

**LCF-ONLY POPULATION  
 FY91, FY10, FY11**



AVERAGES

FY11 TO DATE	147.9
FY10 SAME PERIOD	141.0
FY10 TO YR-END	144.4

4.9%	Change in FY11 to date over same period last year
2.4%	Change in FY11 to date over FY10 average to year-end

**LANCASTER COUNTY CORRECTIONS DEPARTMENT  
MONTHLY STATUS REPORT**

**FISCAL YEAR 2011**

	2010			*****			AVERAGE TO DATE	TOTAL TO DATE
	JUL	AUG	SEP	OCT	NOV	DEC		
Average Daily Population	287.3	305.0	276.9	293.2	296.2	290.9	291.6	N/A
High for Month	302	321	317	315	316	313	314.0	N/A
Low for Month	272	291	252	272	285	257	271.5	N/A
Platte County ADP	10.0	9.0	9.0	9.0	7.0	6.4	8.4	N/A
Butler County ADP	14	14	16	9	9	10	11.8	N/A
Saline County ADP	0	11	15	5	6	2	6.5	N/A
Saunders County ADP	43	56	54	24	22	32	38.3	N/A
Total Number of Bookings	828	945	856	821	818	736	834.0	5,004
Felony Arrests	157	176	160	173	177	161	167.3	1,004
Misdemeanor Arrests	540	609	568	527	503	466	535.5	3,213
Felons Sentenced	22	25	18	22	11	15	18.8	113
Misdemeanants Sentenced	58	70	58	55	62	51	59.0	354
Held for Other Jurisdictions	51	65	52	44	65	43	53.3	320
Total Conditionally Released	275	298	290	299	291	212	277.5	1,665
Percent Conditionally Released	33.21%	31.53%	33.88%	36.42%	35.57%	28.80%	33.2%	33.2%
Pre-Arrestment Releases	163	174	202	188	159	136	170.3	1,022
Court Disposition Releases	112	124	88	111	132	76	107.2	643
Total of Individuals Lodged	553	647	566	522	527	524	556.5	3,339
<b>LANCASTER CORRECTIONAL FACILITY</b>								
Average Daily Population	142.3	160.0	151.9	144.2	142.3	146.5	147.9	N/A
High for Month	164	165	159	152	154	155	158.2	N/A
Low for Month	131	150	146	130	130	137	137.3	N/A
Estimated Value of Inmate Labor	\$3,589	\$3,683	\$3,415	\$3,698	\$3,248	\$3,168	\$3,467	\$20,801
<b>MEDICAL/MENTAL HEALTH SERVICES</b>								
Referred to Jail Physician	38	50	34	27	36	37	37	222
Referred to Mental Health/LRC	1	3	2	6	3	6	4	21
Transferred to Emergency Room	3	4	5	5	6	8	5	31



**LANCASTER COUNTY CORRECTIONS DEPARTMENT  
MONTHLY STATUS REPORT**

**FISCAL YEAR 2010**

	2009			***** ***** *****			2010						AVERAGE TO DATE	TOTAL TO DATE
	JUL	AUG	SEP	OCT	NOV	DEC	JAN	FEB	MAR	APR	MAY	JUN		
Average Daily Population	271.9	271.3	271.0	285.6	275.5	270.7	278.3	263.9	282.5	300.6	292.1	293.6	279.8	N/A
High for Month	301	305	289	299	287	288	301	304	311	320	311	321	303.1	N/A
Low for Month	255	245	261	272	260	255	260	340	249	288	276	279	270.0	N/A
Platte County ADP	25.3	24.6	26.7	28.9	29.6	23.3	23.7	17.0	9.0	7.2	6.5	9.1	19.2	N/A
Butler County ADP	17	19	18	17	14	9	9	11	12	11	12	13	13.5	N/A
York County ADP	2	0	0	0	0	0	0	0	0	0	0	0	0.1	N/A
Saunders County ADP	6	29	33	26	27	25	24	28	27	26	27	30	25.7	N/A
Total Number of Bookings	1010	918	889	816	761	675	817	668	796	828	836	873	823.9	9,887
Felony Arrests	157	135	161	163	137	136	145	113	163	160	171	164	150.4	1,805
Misdemeanor Arrests	707	654	602	528	511	430	545	413	504	505	516	556	539.3	6,471
Felons Sentenced	23	16	24	19	16	13	19	26	25	34	31	25	22.6	271
Misdemeanants Sentenced	59	51	57	58	51	55	59	57	59	70	62	65	58.6	703
Held for Other Jurisdictions	64	62	45	48	46	41	49	63	45	59	56	63	53.4	641
Total Conditionally Released	363	312	286	263	278	199	292	216	265	277	270	280	275.1	3,301
Percent Conditionally Released	35.94%	33.99%	32.17%	32.23%	36.53%	29.48%	36.23%	32.34%	33.29%	33.45%	32.30%	32.07%	33.3%	33.3%
Pre-Arrestment Releases	218	180	186	149	160	114	178	119	163	176	161	162	163.8	1,966
Court Disposition Releases	145	132	100	114	118	85	114	97	102	101	109	118	111.3	1,335
Total of Individuals Lodged	647	606	603	553	483	476	525	452	531	551	566	593	548.8	6,586
<b>LANCASTER CORRECTIONAL FACILITY</b>														
Average Daily Population	149.9	152.1	139.7	144.6	132.4	127.1	131.0	146.6	142.8	155.8	157.5	153.8	144.4	N/A
High for Month	157	162	143	156	144	139	146	159	160	164	161	163	154.5	N/A
Low for Month	140	140	137	139	123	106	110	134	138	148	153	145	134.4	N/A
Estimated Value of Inmate Labor	\$4,375	\$5,307	\$3,150	\$3,537	\$3,444	\$3,321	\$4,024	\$4,597	\$4,481	\$5,496	\$3,669	\$3,625	\$4,085	\$49,024
<b>MEDICAL/MENTAL HEALTH SERVICES</b>														
Referred to Jail Physician	43	35	36	59	27	50	40	40	36	32	30	52	40	480
Referred to Mental Health/LRC	7	4	6	7	2	2	6	2	0	3	2	4	4	45
Transferred to Emergency Room	7	5	5	7	3	7	3	9	8	4	1	5	5	64

**LANCASTER COUNTY CORRECTIONS DEPARTMENT  
MONTHLY STATUS REPORT**

**CALENDAR YEAR 2010**

	2010												AVERAGE TO DATE	TOTAL TO DATE	
	JAN	FEB	MAR	APR	MAY	JUN	JUL	AUG	SEPT	OCT	NOV	DEC			
<b>INTAKE &amp; DETENTION FACILITY</b>															
Average Daily Population	278.3	263.9	282.5	300.6	292.1	293.6	287.3	305.0	276.9	293.2	296.2	290.9	288	N/A	
High for Month	301	304	311	320	311	321	302	321	317	315	316	313	313	N/A	
Low for Month	260	340	249	288	276	279	272	291	252	272	285	257	277	N/A	
Platte County ADP	23.7	17.0	9.0	7.2	6.5	9.1	10.0	9.0	9.0	9.0	7.0	6.4	10	N/A	
Butler County ADP	8.6	10.8	12.2	11.0	12.0	13.0	14.3	13.5	16.1	8.5	8.5	9.7	12	N/A	
Saline County ADP	0.0	0.0	0.0	0.0	0.0	0.0	0.0	10.8	14.7	5.3	5.9	2.1	3	N/A	
Saunders County ADP	24.2	28.4	27.2	26.0	27.0	30.0	42.5	56.0	53.5	23.3	22.4	31.7	33	N/A	
Total Number of Bookings	817	668	796	828	836	873	828	945	856	821	818	736	819	9,822	
New Bookings	214	187	193	208	203	196	206	259	222	231	215	171	209	2,505	
Felony Arrests	145	113	163	160	171	164	157	176	160	173	177	161	160	1,920	
Misdemeanor Arrests	545	413	504	505	516	556	540	609	568	527	503	466	521	6,252	
Domestic Violence Arrests	62	39	48	68	61	65	87	73	69	65	60	48	62	745	
DWI Arrests	97	83	82	69	84	83	64	83	65	71	81	80	79	942	
Felons Sentenced	19	26	25	34	31	25	22	25	18	22	11	15	23	273	
Misdemeanants Sentenced	59	57	59	70	62	65	58	70	58	55	62	51	61	728	
Held for Other Jurisdictions	49	63	45	59	56	63	51	65	52	44	65	43	55	655	
Total Conditionally Released	817	216	265	277	270	280	275	298	290	299	291	212	316	3,790	
Percent Conditionally Released	36.23%	32.34%	33.29%	33.45%	32.30%	32.07%	33.21%	31.53%	33.88%	36.42%	35.57%	28.80%	33%	N/A	
Pre-Arrestment Releases	178	119	163	176	161	162	163	174	202	183	159	136	165	1,981	
Court Disposition Releases	114	97	102	101	109	118	112	124	88	111	132	76	107	1,284	
Total of Individuals Lodged	525	452	531	551	566	593	553	647	566	522	527	524	546	6,557	

<b>LANCASTER CORRECTIONAL FACILITY</b>														
Average Daily Population	131.0	146.6	142.8	155.8	157.5	153.8	142.3	160.0	151.9	144.2	142.3	146.5	148	N/A
High for Month	146	159	160	164	161	163	164	165	159	152	154	155	159	N/A
Low for Month	110	134	138	148	153	145	131	150	146	130	130	137	138	N/A
Estimated Value of Inmate Labor @ \$7.25	\$4,024	\$4,597	\$4,481	\$5,496	\$3,669	\$3,625	\$3,589	\$3,683	\$3,415	\$3,698	\$3,248	\$3,168	\$3,891	\$46,692

<b>MEDICAL/MENTAL HEALTH SERVICES</b>														
Referred to Jail Physician	40	40	36	32	30	52	38	50	34	27	36	37	38	452
Referred to Mental Health/LRC	6	2	0	3	2	4	1	3	2	6	3	6	3	38
Transferred to Emergency Room	3	9	8	4	1	5	3	4	5	5	6	8	5	61

**LANCASTER COUNTY CORRECTIONS  
COMMUNITY SERVICE PROGRAM  
COUNTY ROAD LITTER PICK-UP  
October 2010**

**NUMBER OF COUNTY ROAD CLEAN-UP TRIPS: 5**

**TOTAL INMATE HOURS WORKED: 114**

**TOTAL STAFF HOURS WORKED: 34**

**ROAD DISTANCE CLEARED OF LITTER: 27 miles (1 mile = both sides of road)**

**BAGS OF LITTER REMOVED: 32**

**Litter Pick-up Areas**

**10-6-10**

**E Van Dorn from 98<sup>th</sup> to 112<sup>th</sup>, E Old Cheney 96<sup>th</sup> to 162<sup>th</sup>**

**10-12-10**

**SW 58<sup>th</sup> & W O st to SW 86<sup>th</sup>, NW 48<sup>th</sup> & Holdrege to West A st**

**10-13-10**

**SW 56<sup>th</sup> from Denton Rd to Old Cheney & SW 58<sup>th</sup>**

**NW 48<sup>th</sup> from Holdrege to W A st**

**NW 140<sup>th</sup> and W A st to NW 98<sup>th</sup>**

**10-19-10**

**98<sup>th</sup> from Hickman Rd to Firth Rd**

**10-20-10**

**134<sup>th</sup> from Pella to Roca Rd**

**MINUTES  
BOARD OF CORRECTIONS  
QUARTERLY MEETING  
COUNTY-CITY BUILDING, ROOM 113  
THURSDAY, NOVEMBER 18, 2010  
10:00 A.M.**

Board Members Present: Bob Workman, Vice Chair  
Larry Hudkins  
Ray Stevens  
Deb Schorr

Board Members Absent: Bernie Heier, Chair

Others Present: Mike Thurber, Corrections Director  
Brad Johnson, Transition Coordinator  
Kerry Eagan, Chief Administrative Officer  
Gwen Thorpe, Deputy Chief Administrative Officer  
Cori Beattie, Deputy County Clerk  
Ann Taylor, County Clerk's Office

The Vice Chair opened the meeting at 10:12 a.m.

**AGENDA ITEM**

**1 APPROVAL OF BOARD OF CORRECTIONS MINUTES OF  
THURSDAY, AUGUST 12, 2010**

**MOTION:** Hudkins moved and Stevens seconded approval of the August 12, 2010 Board of Corrections Meeting minutes. Hudkins, Stevens, Schorr and Workman voted aye. Motion carried 4-0.

**2 POPULATION STATISTICS**

A. Population Comments

Mike Thurber, Corrections Director, reported an 8% increase in average daily population compared to the same quarter in 2009. He said the reporting period covered the summer months when they typically have a higher population. A record number was recorded in September (584 prisoners - 317 in the downtown facility, 159 at the Airpark facility and 108 placed out-of-county). He said the number out-of-county placements have had an impact on the budget and so they have reduced the numbers to help hold down costs. Thurber also reported a decrease in the number of bookings this quarter.

## B. Population Graphs

See agenda packet.

## C. Fiscal Year 2010 Monthly Statistical Report

See agenda packet.

## D. Fiscal Year 2009 Monthly Statistical Report

See agenda packet.

### **3 DEPARTMENT ACTIVITIES**

#### A. Training

Thurber said the Training Division handled 394 applications for correctional officer positions this quarter and orientation training was provided to four new correctional officers and two nurses. Six full-time officers completed the Field Training Officer Program. Training was also provided to Adult Probation staff so they can conduct interviews and pre-sentence investigations in the facility.

#### B. Mental Health Jail Diversion Program

Thurber said 68 individuals were screened and 10 were accepted into the Mental Health Jail Diversion Program this quarter. He said Adult Drug Court received a grant that will allow a case manager position to be filled. This will allow the program to increase its capacity from 30 to 45 individuals (15 for Adult Drug Court).

#### C. Out-of-County Housing

Thurber said they are housing inmates in Butler, Platte, Saline and Saunders Counties, due to overcrowding in the jail facility. He said they have also given a contract to Dawson County as a backup for the other facilities.

#### D. Lancaster Correctional Facility (LCF)/Work Crew Activities

Thurber said jail work crew activities this quarter included outdoor projects, removal of water damaged flooring from Trabert Hall, moving furniture for Adult Probation, collection of food containers for the annual Food Bank drive and routine facility maintenance. In addition, they assisted with the Lancaster County Fair by picking up the grounds and dumping trash barrels.

#### E. Programs Division

Thurber said Correctional Specialists coordinated an average of 27 evaluations per month with the consulting psychiatrist this quarter. An average of two inmates per month were placed into Emergency Protective Custody and transferred to the Crisis Center or Lincoln Regional Center with a jail hold. He said Correctional Specialists also had an average of 583 contacts with inmates, addressing personal problems and mental health and confinement concerns. Thurber said the Chaplain coordinated 155 educational, self-help and religious programs per month during this quarter and said there is a strong volunteer base with the Good News Jail and Prison Ministries coming in on a regular basis to provide services.

#### F. Transition Activities

Thurber said Bob Jarrett, Corrections Maintenance/Construction Manager, and Brad Johnson, Transition Coordinator, have finalized the lock functions on nearly 500 doors and reviewed the design of plumbing chases and toilet fixtures throughout the facility. He said they are also working with Troy Hawk, Court Administrator, Lancaster County District Court, on the issue of video arraignments. In addition, Johnson is working with Information Services (IS) on the upgrade of the inmate management system.

Stevens asked whether the video arraignment system could be piloted before it is introduced into the new facility.

Thurber said perhaps they could arrange to have a mock setup.

Thurber also clarified that the facility should be completed by the third or fourth quarter of 2012. **NOTE:** Commissioner Heier had previously reported that Thurber had told him the facility would not be completed until the third or fourth quarter of 2013.

Schorr suggested that an invitation be extended to Lancaster County State Senators to tour the facility.

#### 4 ADJOURNMENT

**MOTION:** Schorr moved and Hudkins seconded to adjourn the meeting at 10:31 a.m. Stevens, Schorr, Hudkins and Workman voted aye. Motion carried

  
\_\_\_\_\_  
Dan Nolte  
Lancaster County Clerk

