

LANCASTER COUNTY CORRECTIONS DEPARTMENT

605 SOUTH TENTH STREET
LINCOLN, NE 68508
(402) 441-7530
FAX: 441-8946

MICHAEL THURBER, DIRECTOR

LANCASTER COUNTY CORRECTIONS BOARD

-AGENDA-

November 18, 2010
Thursday @ 10:00

LANCASTER COUNTY CORRECTIONS BOARD

- AGENDA -

**Thursday, Nov. 18, 2010
10:00 a.m.**

I. Approval of the August 12, 2010 Meeting

II. Population Statistics

- A. Population Comments
- B. Population Graphs-Appendix 1
- C. Fiscal Year 2010 Monthly Statistical Report-Appendix 2
- D. Fiscal Year 2009 Monthly Statistical Report-Appendix 3

III. Department Activities

- A. Training
- B. Mental Health Jail Diversion Project
- C. Out of County Housing
- D. LCF/Work Crew Activities
- E. Programs Division
- F. Transition Activities

IV. Adjournment

Attachments.

- 1- August 12, 2010 Minutes
- 2- Population Graphs
- 3- Monthly Status Reports
- 4- Community Service Program

Lancaster County Corrections Board
Meeting of Thursday, Nov. 18, 2010

I. APPROVAL OF MINUTES- August 12, 2010

II. POPULATION STATISTICS	<u>2009</u> July-Sept.	<u>2010</u> July-Sept.	Change
Average Daily Population	485.5	524.8	+ 8.1%
JAIL/out of county	338.3	373.4	+ 10.4 %
LCF	147.2	151.4	+ 2.8 %
Total Bookings	2,817.0	2,629.0	- 6.7%
Average per month	939.0	876.3	
Total Lodgings	1,856.0	1,766.0	- 4.8%
Average per month	618.7	588.7	
Platte County Inmate Housing (Sept. '05)			
Average per month	25.5	9.3	- 63.4%
Butler County Inmate Housing (May '07)			
Average per month	18.0	14.7	- 18.5%
Saline County Inmate Housing (Aug. 2010)			
Average per month	0.0	8.7	
Saunders Co. Inmate Housing (July '09)			
Average per month	22.7	51.00	+125.0 %
Behavior Health/Jail Diversion	11.0	10.00	- 9.09%
Pretrial Release /CC	15.0	9.00	-40.0%
Sentence Conversion to House Arrest	26.0	16.00	-38.5%

A. Population Comments

Comparing our quarterly average daily population, we have experienced an 8.1% increase over the the same quarter in 2009. This quarter's increase has resulted in a new high population total for the department. In September, we recorded a total of 584 inmates; 317 downtown, 159 at Airpark, and 108 out of county prisoners. The out of county housing increase has affected our budgetary line item for this fiscal year. The department's out of county housing showed an ADP of 66 in 2009 in comparison to 83 in 2010. We currently have been able to reduce the out of county housing numbers which should offset this line item's current deficiency.

Also during this quarter, we have seen a decrease (187 persons) in our booking totals. Under the population statistics, we have added the number of inmates released to the Behavior Health/Jail Diversion Program, Pre-Trial Release/CC, and the Sentence Conversion Program.

B. Population Graph (see attached) Appendix 1

The population graph shows the month to month populations for FY10 and FY11. This graph shows the facility's rated capacity as of 1991 when the Adult Detention Facility opened.

C. Monthly Statistical Report (see attached) Appendix 2 & 3, FY10 & FY11

This is a statistical report giving the average daily population for both facilities, number of bookings, types of arrests and releases, as well as medical and mental health services provided.

III. DEPARTMENT ACTIVITIES

A. TRAINING

In the period from July-September, 2010, the training division handled approximately 394 applications for Correctional Officer positions. Orientation training was provided for four new officers (two full-time, two on-calls) and two nurses.

Six full-time officers completed the 12 week Field Training Officer Program, designed to help in the training of new officers during their first three months on the job. Three other officers were still a part of the program by the end of this period.

Training was also provided to Probation staff so they may enter the facility to conduct screenings.

B. MENTAL HEALTH JAIL DIVERSION PROJECT

The Jail Diversion Project accepted 10 people into the program, terminated seven (most of them drug court individuals) and successfully closed three cases. Sixty eight people were screened this quarter. They began screening additional individuals identified as those at risk of returning to jail after being released due to mental health issues.

Last quarter, it was noted that Randy Thurber had taken a position in Iowa. His position remained open but not eliminated due to budgetary cuts. Since then, Drug Court has been given a grant that will allow the position to be filled. This position will be used as a case manager, collaborating with the individuals who are in Drug Court that use diversion services. This will allow the project to bring their capacity back up to 45 individuals, 15 of which will be Drug Court. The current capacity is 30, including drug court cases.

During this quarter, four individuals came to the project from Drug Court referrals and one has been accepted.

C. OUT OF COUNTY HOUSING

Lancaster County continues to house inmates in Platte, Butler, Saunders and Saline counties due to overcrowding. During the months of July, August and Sept. 2010, we maintained an average population of 9.3 inmates in Platte County. During this same time period, eight round trips were made, moving 26 inmates between the two facilities.

Butler County's average population for this time period was 14.7 with 56 inmates moved between the two facilities.

Saunders County's average population for this period was 51 with 200 inmates moved between the two facilities.

Saline County Corrections was added to contract housing in August 2010. Average inmate population for August and September was 8.7 with 35 inmates being moved between the two facilities.

In addition, the transport division transported 3,098 inmates to court, medical appointments or other locations. This required approximately 1,374 staff hours to complete.

D. LCF & WORK CREW ACTIVITIES

July was a busy month for work crews, taking 11 days to complete outdoor projects. Other projects throughout the month included removing water damaged flooring from Trabert Hall, moving office furniture for Adult Probation, and collecting food containers for the annual Food Bank Drive.

August was a continuation of routine maintenance and repairs at LCF, getting prepared for the county surplus auction, and dealing with HVAC issues.

During the month of September, crews dealt with a substantial roof leak causing a large area of damage to the east hallway ceiling at LCF. The rest of the month was spent on preventative maintenance on HVAC units, painting and shower tile repairs.

E. PROGRAMS DIVISION

The Correctional Specialists coordinated an average of 27 evaluations per month with the consulting psychiatrist in the months of July, August and September, 2010. An average of two inmates per month were placed into Emergency Protective Custody and transferred with a jail hold to the Crisis Center or Lincoln Regional Center, due to meeting the criteria of mental illness and dangerousness to oneself or others.

Correctional Specialists had an average of 583 contacts with inmates each month this quarter, in which mental health, personal problems, or coping with confinement concerns were addressed.

In addition to attending to the mental health needs of inmates, and providing support and assistance in coping with confinement, Correctional Specialists and the Chaplain coordinated an average of 155 educational, self-help, and religious programs per month during this time period. This number represents programs offered at both the downtown Intake & Detention Facility and the Airpark Lancaster Correctional Facility.

The Work Release Coordinator reviewed an average of 185 court ordered release applications per month in July, August and September, 2010. This number reflects both District and County Court applications. The average number of individuals on work release in these months was 35.

F. TRANSITION ACTIVITIES

Transition for this quarter has involved some new projects and continuous on-going ones. Bob Jarrett and Brad Johnson have reviewed and finalized the lock functions on nearly 500 architectural doors in the facility. Our keying committee is currently planning the keying strategies for these doors.

Brad has continued conversations with District Court Administrator, Troy Hawk, concerning video arraignment. District Court has identified which court room they would like to have the first system installed.

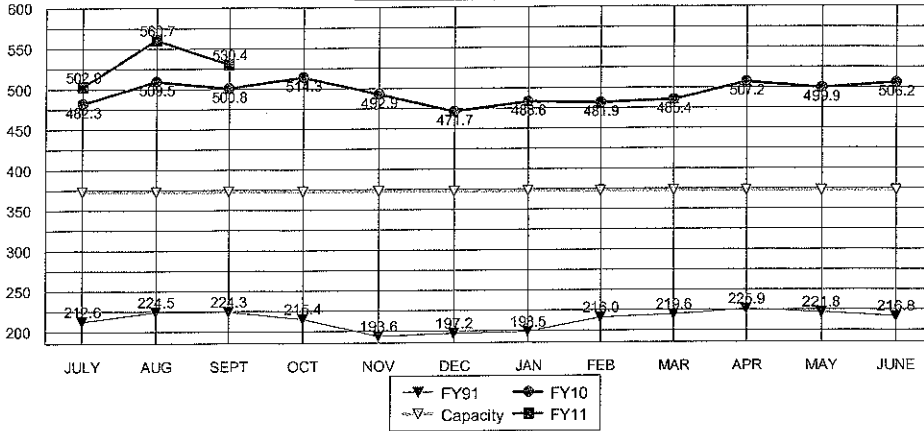
The booking committee continues to meet on a regular basis. Discussions have begun concerning the issuance and retrieval of department property.

Bob Jarrett and Brad Johnson have reviewed the design of plumbing chases and toilet fixtures throughout the facility.

Brad has also participated in Information Service's upgrade to our inmate management system. They are trying to incorporate as many changes as needed to reflect the demands of the new jail facility.

IV. ADJOURNMENT

**TOTAL POPULATIONS
 FY91, FY10, FY11**

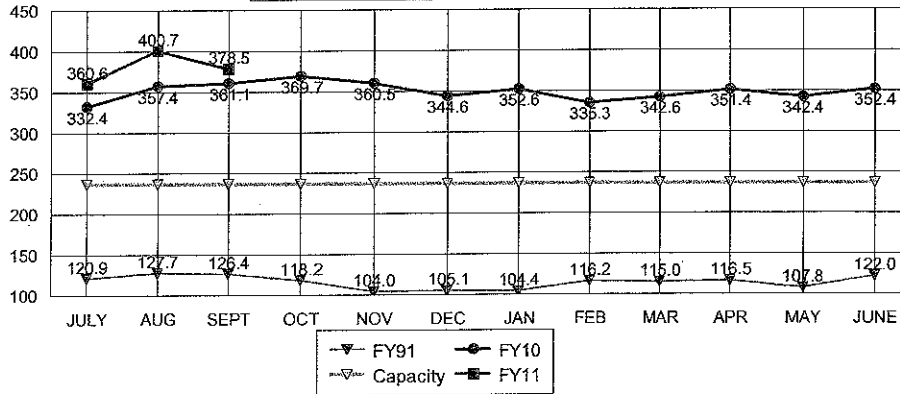


AVERAGES

FY11 TO DATE	531.3
FY10 SAME PERIOD	497.5
FY10 TO YR-END	494.6

6.8%	Change in FY11 to date over same period last year
7.4%	Change in FY11 to date over FY10 average to year-end

**JAIL-OFF SITE CO. POPULATION
 FY91, FY10, FY11**

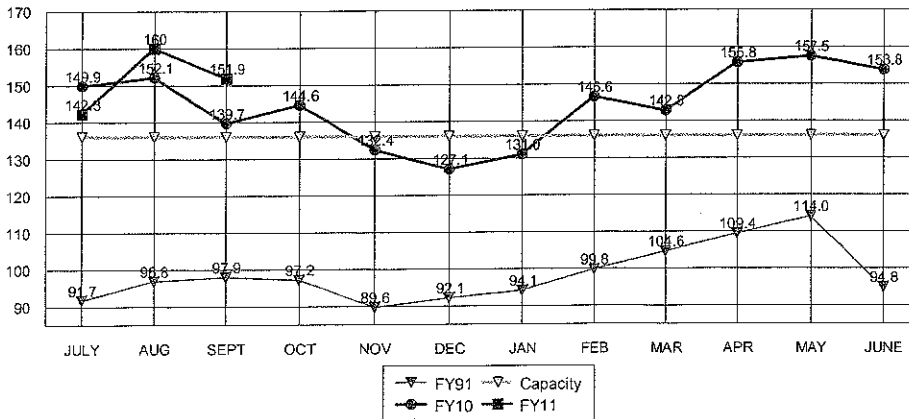


AVERAGES

FY11 TO DATE	379.9
FY10 SAME PERIOD	350.3
FY10 TO YR-END	350.2

8.5%	Change in FY11 to date over same period last year
8.5%	Change in FY11 to date over FY10 average to year-end

**LCF-ONLY POPULATION
 FY91, FY10, FY11**



AVERAGES

FY11 TO DATE	151.4
FY10 SAME PERIOD	147.2
FY10 TO YR-END	144.4

2.8%	Change in FY11 to date over same period last year
4.8%	Change in FY11 to date over FY10 average to year-end

**MINUTES
BOARD OF CORRECTIONS
QUARTERLY MEETING
COUNTY-CITY BUILDING, ROOM 113
THURSDAY, AUGUST 12, 2010
8:30 A.M.**

Board Members Present: Bernie Heier, Chair
Bob Workman, Vice Chair
Larry Hudkins
Ray Stevens
Deb Schorr

Others Present: Mike Thurber, Corrections Director
Brad Johnson, Transition Coordinator
Kerry Eagan, Chief Administrative Officer
Gwen Thorpe, Deputy Chief Administrative Officer
Dan Nolte, County Clerk
Cori Beattie, Deputy County Clerk
Ann Taylor, County Clerk's Office

The Chair opened the meeting at 8:36 a.m.

AGENDA ITEM

1 APPROVAL OF BOARD OF CORRECTIONS MINUTES OF THURSDAY, MAY 6, 2010

MOTION: Hudkins moved and Stevens seconded approval of the May 6, 2010 Board of Corrections Meeting minutes. Hudkins, Schorr, Stevens, Workman and Heier voted aye. Motion carried 5-0.

2 POPULATION STATISTICS

A. Population Comments

Mike Thurber, Corrections Director, said there has been a 5.7% increase in average daily population compared to the same quarter in 2009. The average daily population is 498. There has been a slight decrease in bookings for the same period.

Heier questioned the impact Community Corrections is having on jail population numbers and said that is an issue he will want to address in the future.

Thurber said out-of-county housing has been cut back in response to budget concerns.

B. Population Graphs

See agenda packet.

C. Fiscal Year 2010 Monthly Statistical Report

See agenda packet.

D. Fiscal Year 2009 Monthly Statistical Report

See agenda packet.

3 DEPARTMENT ACTIVITIES

A. Training

Thurber said there were 395 applications for Correctional Officer positions for the period April-June, 2010. Orientation training was provided to two new, full-time officers. Ten staff members attended a Nebraska Jail Standards Conference in Kearney, Nebraska and three other staff members attended the American Jail Association's Annual Training and Jail Expo Conference in Portland, Oregon this quarter.

B. Mental Health Jail Diversion Program

Thurber said the Mental Health Jail Diversion Program accepted 12 new clients this quarter. Four cases were successfully closed. Nine were terminated (most were Drug Court individuals). He said they generally maintain 33 in the program. Thurber said they have asked the program to look at individuals with low-grade felony charges because they tend to take up a lot of jail days.

C. Out-of-County Housing

Thurber said they are still housing inmates in Butler, Platte and Saunders Counties, due to overcrowding in the jail facility. He said Saline County has opened up beds and a contract to house inmates in their facility will be scheduled on the August 17th County Board of Commissioners Meeting agenda (the rate will be \$45 per inmate, per day).

D. Lancaster Correctional Facility (LCF)/Work Crew Projects

Thurber said the jail work crews performed routine facility maintenance, picked up trash along a bike trail in preparation for the Lincoln Marathon and assisted departments with office moves.

E. Programs Division

Thurber said Correctional Specialists coordinated an average of 36 evaluations per month with the consulting psychiatrist this quarter. An average of two inmates per month were placed into Emergency Protective Custody (EPC) and transferred with a jail hold to the Crisis Center or Lincoln Regional Center. The Work Release Coordinator reviewed an average of 151 court-ordered release applications per month. The average number of individuals on work release this quarter was 31. He said the Chaplain would like to improve outreach to individuals in the Lancaster Correctional Facility (LCF) and is looking at adding an assistant chaplain.

F. Transition Activities

Brad Johnson, Transition Coordinator, said the Nebraska Jail Standards Board approved a proposal to obscure some of the cell and dorm windows and said the glazing schedule was adjusted accordingly. He said a key plan for doors throughout the facility was completed and he and Bob Jarrett, Corrections Maintenance/Construction Manager, have been reviewing architectural door lock functions. The Booking Committee continues to meet and work through the processes that will be used in that area.

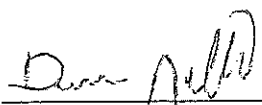
4 NEW BUSINESS

Thurber reported that the first set of cells have been put in place in the new jail.

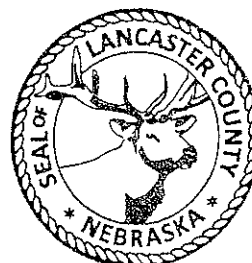
In response to a question from Heier, Thurber said construction is 124 days behind schedule, due to weather.

5 ADJOURNMENT

MOTION: Workman moved and Stevens seconded to adjourn the meeting at 8:54 a.m. Hudkins, Workman, Stevens, Schorr and Heier voted aye. Motion carried 5-0.



Dan Nolte
Lancaster County Clerk



**LANCASTER COUNTY CORRECTIONS DEPARTMENT
MONTHLY STATUS REPORT**

FISCAL YEAR 2011

	2010			AVERAGE TO DATE	TOTAL TO DATE
	JUL	AUG	SEP		
Average Daily Population	287.3	305.0	276.9	289.7	N/A
High for Month	302	321	317	313.3	N/A
Low for Month	272	291	252	271.7	N/A
Platte County ADP	10.0	9.0	9.0	9.3	N/A
Butler County ADP	14	14	16	14.6	N/A
Saline County ADP	0	11	15	8.5	N/A
Saunders County ADP	43	56	54	50.7	N/A
Total Number of Bookings	828	945	856	876.3	2,629
Felony Arrests	157	176	160	164.3	493
Misdemeanor Arrests	540	609	568	572.3	1,717
Felons Sentenced	22	25	18	21.7	65
Misdemeanants Sentenced	58	70	58	62.0	186
Held for Other Jurisdictions	51	65	52	56.0	168
Total Conditionally Released	275	298	290	287.7	863
Percent Conditionally Released	33.21%	31.53%	33.88%	32.9%	32.9%
Pre-Arrestment Releases	163	174	202	179.7	539
Court Disposition Releases	112	124	88	108.0	324
Total of Individuals Lodged	553	647	566	588.7	1,766
LANCASTER CORRECTIONAL FACILITY					
Average Daily Population	142.3	160.0	151.9	151.4	N/A
High for Month	164	165	159	162.7	N/A
Low for Month	131	150	146	142.3	N/A
Estimated Value of Inmate Labor	\$3,589	\$3,683	\$3,415	\$3,562	\$10,687
MEDICAL/MENTAL HEALTH SERVICES					
Referred to Jail Physician	38	50	34	41	122
Referred to Mental Health/LRC	1	3	2	2	6
Transferred to Emergency Room	3	4	5	4	12

APPENDIX 2

**LANCASTER COUNTY CORRECTIONS DEPARTMENT
MONTHLY STATUS REPORT**

FISCAL YEAR 2010

	2009						2010						AVERAGE TO DATE	TOTAL TO DATE
	JUL	AUG	SEP	OCT	NOV	DEC	JAN	FEB	MAR	APR	MAY	JUN		
Average Daily Population	271.9	271.3	271.0	285.6	275.5	270.7	278.3	263.9	282.5	300.6	292.1	293.6	279.8	N/A
High for Month	301	305	289	299	287	288	301	304	311	320	311	321	303.1	N/A
Low for Month	255	245	261	272	260	255	260	340	249	288	276	279	270.0	N/A
Platte County ADP	25.3	24.6	26.7	28.9	29.6	23.3	23.7	17.0	9.0	7.2	6.5	9.1	19.2	N/A
Butler County ADP	17	19	18	17	14	9	9	11	12	11	12	13	13.5	N/A
York County ADP	2	0	0	0	0	0	0	0	0	0	0	0	0.1	N/A
Saunders County ADP	6	29	33	26	27	25	24	28	27	26	27	30	25.7	N/A
Total Number of Bookings	1010	918	889	816	761	675	817	668	796	828	836	873	823.9	9,887
Felony Arrests	157	135	161	163	137	136	145	113	163	160	171	164	150.4	1,805
Misdemeanor Arrests	707	654	602	528	511	430	545	413	504	505	516	556	539.3	6,471
Felons Sentenced	23	16	24	19	16	13	19	26	25	34	31	25	22.6	271
Misdemeanants Sentenced	59	51	57	58	51	55	59	57	59	70	62	65	58.6	703
Held for Other Jurisdictions	64	62	45	48	46	41	49	63	45	59	56	63	53.4	641
Total Conditionally Released	363	312	286	263	278	199	292	216	265	277	270	280	275.1	3,301
Percent Conditionally Released	35.94%	33.99%	32.17%	32.23%	36.53%	29.48%	36.23%	32.34%	33.29%	33.45%	32.30%	32.07%	33.3%	33.3%
Pre-Arrestment Releases	218	180	186	149	160	114	178	119	163	176	161	162	163.8	1,966
Court Disposition Releases	145	132	100	114	118	85	114	97	102	101	109	118	111.3	1,335
Total of Individuals Lodged	647	606	603	553	483	476	525	452	531	551	566	593	548.8	6,586
LANCASTER CORRECTIONAL FACILITY														
Average Daily Population	149.9	152.1	139.7	144.6	132.4	127.1	131.0	146.6	142.8	155.8	157.5	153.8	144.4	N/A
High for Month	157	162	143	156	144	139	146	159	160	164	161	163	154.5	N/A
Low for Month	140	140	137	139	123	106	110	134	138	148	153	145	134.4	N/A
Estimated Value of Inmate Labor	\$4,375	\$5,307	\$3,150	\$3,537	\$3,444	\$3,321	\$4,024	\$4,597	\$4,481	\$5,496	\$3,669	\$3,625	\$4,085	\$49,024
MEDICAL/MENTAL HEALTH SERVICES														
Referred to Jail Physician	43	35	36	59	27	50	40	40	36	32	30	52	40	480
Referred to Mental Health/LRC	7	4	6	7	2	2	6	2	0	3	2	4	4	45
Transferred to Emergency Room	7	5	5	7	3	7	3	9	8	4	1	5	5	64

**LANCASTER COUNTY CORRECTIONS
COMMUNITY SERVICE PROGRAM
COUNTY ROAD LITTER PICK-UP
June – September 2010**

NUMBER OF COUNTY ROAD CLEAN-UP TRIPS: 7

TOTAL INMATE HOURS WORKED: 147.5

TOTAL STAFF HOURS WORKED: 62.5

ROAD DISTANCE CLEARED OF LITTER: 47 miles (1 mile = both sides of road)

BAGS OF LITTER REMOVED: 74