

LANCASTER COUNTY CORRECTIONS DEPARTMENT

605 SOUTH TENTH STREET
LINCOLN, NE 68508
(402) 441-7530
FAX: 441-8946

MICHAEL THURBER, DIRECTOR

RECEIVED

AUG 12 2010

LANCASTER COUNTY
CLERK

LANCASTER COUNTY CORRECTIONS BOARD

-AGENDA-

August 12, 2010
Thursday @ 8:30

LANCASTER COUNTY CORRECTIONS BOARD

- AGENDA -

**Thursday, Aug. 12, 2010
8:30 a.m.**

I. Approval of the May 6, 2010 Meeting

II. Population Statistics

- A. Population Comments
- B. Population Graphs-Appendix 1
- C. Fiscal Year 2010 Monthly Statistical Report-Appendix 2
- D. Fiscal Year 2009 Monthly Statistical Report-Appendix 3

III. Department Activities

- A. Training
- B. Mental Health Jail Diversion Project
- C. Out of County Housing
- D. LCF/Work Crew Activities
- E. Programs Division
- F. Transition Activities

IV. New Business

V. Adjournment

Attachments.

- 1- May 6, 2010 Minutes
- 2- Population Graphs
- 3- Monthly Status Reports

Lancaster County Corrections Board
Meeting of Thursday, Aug. 12, 2010

I. APPROVAL OF MINUTES- May 6, 2010

II. POPULATION STATISTICS	<u>2009</u>	<u>2010</u>	Change
	April-June	April-June	
Average Daily Population	471.3	498.4	+ 5.7%
JAIL/ Platte/Butler	320.9	342.7	+ 6.8 %
LCF	150.4	15.7	+ 3.5 %
Total Bookings	2,604.0	2,537.0	- 2.6%
Average per month	868.0	845.7	
Total Lodgings	1,723.0	1,710.0	- 0.8%
Average per month	574.3	570.0	
Platte County Inmate Housing (Sept. '05)			
Average per month	28.2	7.6	- 73.0%
Butler County Inmate Housing (May '07)			
Average per month	18.0	12.0	- 33.3%
York County Inmate Housing (Oct. '07)			
Average per month	3.7	0.0	
Saunders Co. Inmate Housing (July '09)	0.0	27.7	
Average per month			

A. Population Comments

Comparing our current quarterly average daily population, we have experienced a 5.7% increase over the same quarter of 2009. We did see a slight decrease in bookings which is less than a hundred individuals booked over the same period. Overall, we are still experiencing spring to summer population increases as the years progress.

With our out of county housing, along with budget concerns and potential staffing needs for the future, we attempted to cut back on out of county housing during this reporting quarter.

Reviewing Appendix 1 (population graph), comparing June, 1991 to June, 2010, our average daily population has increased from 216 inmates to over 506. This represents an approximate 135% population increase over the past 19 years.

B. Population Graph (see attached) Appendix 1

The population graph shows the month to month populations for FY09 and FY10. This graph shows the facility's rated capacity as of 1991 when the Adult Detention Facility opened.

C. Monthly Statistical Report (see attached) Appendix 2 & 3, FY09 & FY10

This is a statistical report giving the average daily population for both facilities, number of bookings, types of arrests and releases, as well as medical and mental health services provided.

III. DEPARTMENT ACTIVITIES

A. TRAINING

In the period from April-June, 2010, the training division handled approximately 395 applications for Correctional Officer positions. Orientation training was provided for two new, full-time officers.

One full-time officer completed the 12 week Field Training Officer Program, designed to help in the training of new officers in their first three months on the job. Seven other officers were still a part of the program by the end of this period.

Ten staff members attended the Nebraska Jail Standards conference in Kearney, NE. Lt. Anderson and three other staff members attended the American Jail Association's Annual Training and Jail Expo Conference in Portland, Oregon.

B. MENTAL HEALTH JAIL DIVERSION PROJECT

The Jail Diversion Project accepted 12 people into the program, terminated 9 (most of them drug court individuals) and successfully closed 4 cases. Thirty six people were screened this quarter. They began screening additional individuals identified as those at risk of returning to jail after being released due to mental health issues. They were given another grant to accept 10 individuals in the next year as a "re-entry" intervention. These individuals are persons identified, primarily by Programs Staff, who may have been sentenced and not eligible for diversion but would benefit from supports upon release. They still need to meet the criteria of a Severe and Persistent Mental Illness (SPMI) but may not have any additional pending charges. They have accepted one individual at this point.

Randy Thurber has moved to Iowa and is no longer with the diversion program. They did not fill the position due to budgetary cuts. The position has not been eliminated but left as a vacancy. They also are actively pursuing funding through Magellan for as many individuals as possible to help sustain our budget, given the fiscal situation. This, however, is a very time consuming pursuit that requires about two hours of additional paperwork and calling in for authorization of funding for each individual we enroll. We have continued to pursue some individuals with felony charges and have been allowed to accept a few first time domestic assaults as long as the individual does not have a history of assaultive behaviors.

C. OUT OF COUNTY HOUSING

Lancaster County continues to house inmates in Platte, Butler, and Saunders counties due to overcrowding. During the months of April, May and June 2010, we maintained an average population of 7.6 inmates in Platte County. During this same time period, nine round trips were made moving 31 inmates between the two facilities.

Butler County's average population for this time period was 12.0 with 35 inmates moved between the two facilities.

Saunders County's average population for this period was 27.7 with 156 inmates moved between the two facilities.

In addition, the transport division transported 2,909 inmates to court, medical appointments or other locations. This required approximately 1,202 staff hours to complete.

D. LCF & WORK CREW ACTIVITIES

During April 2010, LCF work crews moved materials/boxes for the Election Commissioner's Office. They also picked up trash along the bike trail in the 35th & J area in preparation for the Lincoln Marathon. Spring cleaning of all HVAC units was completed, along with painting restroom and shower areas at LCF.

May was a continuation of routine maintenance and painting at LCF. Crews moved 10 bunk beds from the downtown facility to LCF, moved the City Engineer from West Gate to the County City Building and assisted the Election Commissioner with the May primary. Other projects this month included moving tables and chairs from the Health Department for budget hearings.

During the month of June, they moved Adult Probation to the basement level of Trabert Hall due to office flooding on the 3rd & 4th floors. They also hauled a large freezer from the Senior Center to Alter Scrap Metal, replacing it with another freezer that was moved from the County City Building. The rest of the month consisted of routine maintenance.

E. PROGRAMS DIVISION

The Correctional Specialists coordinated an average of 36 evaluations per month with the consulting psychiatrist in the months of April, May and June, 2010. An average of two inmates per month were placed into Emergency Protective Custody and transferred with a jail hold to the Crisis Center or Lincoln Regional Center, due to meeting the criteria of mental illness and dangerousness to oneself or others.

Correctional Specialists had an average of 491 contacts with inmates this quarter, in which mental health, personal problems, or coping with confinement concerns were addressed.

In addition to attending to the mental health needs of inmates, and providing support and assistance in coping with confinement, Correctional Specialists and the Chaplain coordinated an average of 170 educational, self-help, and religious programs per month during this time period. This number represents programs offered at both the downtown Intake & Detention Facility and the Airpark Lancaster Correctional Facility.

The Work Release Coordinator reviewed an average of 151 court ordered release applications per month in April, May and June, 2010. This number reflects both District and County Court applications. The average number of individuals on work release in these months was 31.

F. TRANSITION ACTIVITIES

At the April Jail Standards meeting, Brad Johnson, Transition Coordinator, presented a proposal to obscure some of the cell and dorm windows. The windows in question either provided observation between male and female units or allowed delivery personnel direct views into cells. The Jail Standards board approved our proposal and the window schedule was adjusted accordingly.

A Detention Key Committee was formed to devise a key plan for detention doors throughout the building. This consisted of numerous meetings with the key committee, administrative staff and the security consultants. A plan was developed and finalized that met everyone's needs.

Bob Jarrett and Brad Johnson reviewed the architectural door lock functions. This involved nearly 500 doors and the manner in which the locking mechanism will function. Our suggestions were presented to administration and several shift lieutenants. This task is in the final phase and should be concluded shortly.

The Booking Committee has continued to meet and work through the processes that will be used in that area.

We continue to review and explore options for the food trays and corresponding carts. Many factors must be considered while making this decision.

IV. NEW BUSINESS

V. ADJOURNMENT

**MINUTES
BOARD OF CORRECTIONS
QUARTERLY MEETING
COUNTY-CITY BUILDING, ROOM 113
THURSDAY, MAY 6, 2010
8:30 A.M.**

Board Members Present: Bernie Heier, Chair
Bob Workman, Vice Chair
Larry Hudkins
Ray Stevens
Deb Schorr

Others Present: Mike Thurber, Corrections Director
Brad Johnson, Transition Coordinator
Greg Newport, The Clark Enersen Partners
Gwen Thorpe, Deputy Chief Administrative Officer
Dan Nolte, County Clerk
Ann Taylor, County Clerk's Office

The Chair opened the meeting at 8:32 a.m.

AGENDA ITEM

**1 APPROVAL OF BOARD OF CORRECTIONS MINUTES OF
THURSDAY, FEBRUARY 4, 2010**

MOTION: Hudkins moved and Workman seconded approval of the February 4, 2010 Board of Corrections Meeting minutes. Hudkins, Workman, Stevens and Schorr voted aye. Heier abstained from voting. Motion carried 4-0, with one abstention.

2 POPULATION STATISTICS

A. Population Comments

Mike Thurber, Corrections Director, said daily population numbers for the first quarter of 2010 are nearly identical to the same period in 2009 but the number of bookings and monthly lodgings decreased.

B. Population Graphs

See agenda packet.

C. Fiscal Year 2010 Monthly Statistical Report

See agenda packet.

D. Fiscal Year 2009 Monthly Statistical Report

See agenda packet.

3 DEPARTMENT ACTIVITIES

A. Training

Thurber said there were 461 applications for Correctional Officer positions. Orientation training was provided to seven new officers. Five officers attended the Officer's Training Academy. In service training for Cardio-Pulmonary Resuscitation (CPR), Automatic External Defibrillator (AED) and First Aid was also provided.

B. Mental Health Jail Diversion Program

Thurber said the Mental Health Jail Diversion Program accepted 15 new clients this quarter. Two cases were closed and nine were terminated. He said the program currently has 27 active participants and said they are pursuing funds to accept 12 individuals per year who are completing sentences.

C. Out-of-County Housing

Thurber said they are still housing inmates in Butler, Platte and Saunders Counties, due to overcrowding in the jail facility, but are trying to hold the numbers down to control costs. He said he would like to add a facility in Lexington (Dawson County), as well, to provide more flexibility.

Hudkins asked Thurber whether he has considered utilizing the new detention facility in Kearney (Buffalo County).

Thurber said the facility has indicated it is not interested at this time, but said it may be an option in the future.

D. Lancaster Correctional Facility (LCF)/Work Crew Projects

Thurber said the jail work crews performed routine facility maintenance, snow removal and assisted departments with office moves and moving surplus property to storage this quarter.

E. Programs Division

Thurber said Correctional Specialists coordinated an average of 34 evaluations per month with the consulting psychiatrist this quarter. An average of two inmates per month were placed into Emergency Protective Custody (EPC) and transferred with a jail hold to the Crisis Center or Lincoln Regional Center. Correctional Specialists also had more than five hundred contacts with inmates this quarter, addressing mental health, personal problems and confinement concerns. The Work Release Coordinator reviewed an average of 164 court-ordered release applications per month. The average number of individuals on work release this quarter was 37.

F. Transition Activities

Brad Johnson, Transition Coordinator, said they continue to plan for the new jail, citing the following activities:

- Identification of units
- Review of "attic" stock
- Preparation of staffing and keying plans
- A tour of Hall of Justice for Sampson Construction and Commonwealth Electric to identify infrastructure needs and routing for the video arraignment system
- Coordination with Public Works and District Energy Corporation (DEC) for delivery of fiber optics
- Fine tuning of furnishing specifications for bidding process
- Testing of food trays and carts
- Developing processes for the new booking area

Schorr suggested the department video the return of property to individuals being released to try to reduce the number of tort claims filed against the Corrections Department.

Hudkins said he would like to see two cameras installed in the booking area.

4 NEW BUSINESS

Greg Newport, The Clark Enersen Partners, announced that his firm has received a merit award from the 2010 American Institute of Architects (AIA)/American Association for Justice (AAJ) Justice Facilities Review Awards Program and Publication for the Lancaster County Adult Detention Facility (Exhibit A).

5 OTHER BUSINESS

A. Report on Meeting with Nebraska Department of Roads (NDOR) & Public Works - Heier, Hudkins

Heier and Hudkins reported that they recently met with Thurber, Newport, Trish Owen, Deputy Chief of Staff, Mayor's Office, and representatives of the Nebraska Department of Roads (NDOR) & Public Works to discuss the issue of where to locate two bus stops at the new jail facility.

Hudkins said one of the issues holding up a decision is a future traffic light. He said NDOR and Public Works could not agree on where it should be placed and indicated there is not enough traffic at this point to install one. Hudkins said the representative from NDOR stated it is his opinion that bus stops are not required.

Heier said it is a safety issue.

Newport said the cost of the bus stops is estimated to be \$90,000 and said NDOR wants the City or County to agree to pay to rebuild them if the Southwest 40th Street intersection is developed with a traffic light.

Mike Thurber, Corrections Director, said design of the intersection has also been delayed and said they need an Executive Order from the Mayor to proceed.

MOTION: Workman moved and Hudkins seconded to direct Kerry Eagan, Chief Administrative Officer, to prepare a letter to the Mayor, with a copy to Randy Hoskins, Assistant City Engineer, indicating that the County will proceed with an assumption there will not be bus stops at the new jail facility, unless the City makes a decision by July 1, 2010.

Hudkins questioned whether a shorter deadline would be more appropriate.

The maker of the motion and the seconder amended their motion to indicate a deadline of June 15, 2010.

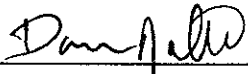
In response to a question from Workman, Newport said he believes locating the bus stops on West "O" Street at the entrance to the facility, as the County has suggested, is preferable to locating them on Southwest 40th Street.

ROLL CALL ON THE MOTION AS AMENDED: Hudkins, Workman, Schorr and Heier voted aye. Stevens voted no. Motion carried 4-1.

The Chair and Vice Chair agreed to discuss the matter with Mayor at their monthly meeting.

6 ADJOURNMENT

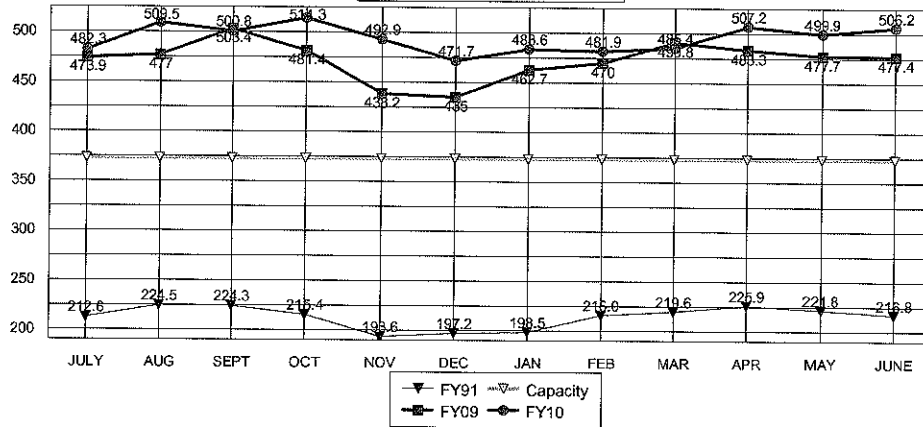
MOTION: Workman moved and Hudkins seconded to adjourn the meeting at 9:12 a.m. Hudkins, Workman, Stevens, Schorr and Heier voted aye. Motion carried 5-0.



Dan Nolte
Lancaster County Clerk



**TOTAL POPULATIONS
 FY91, FY09, FY10**

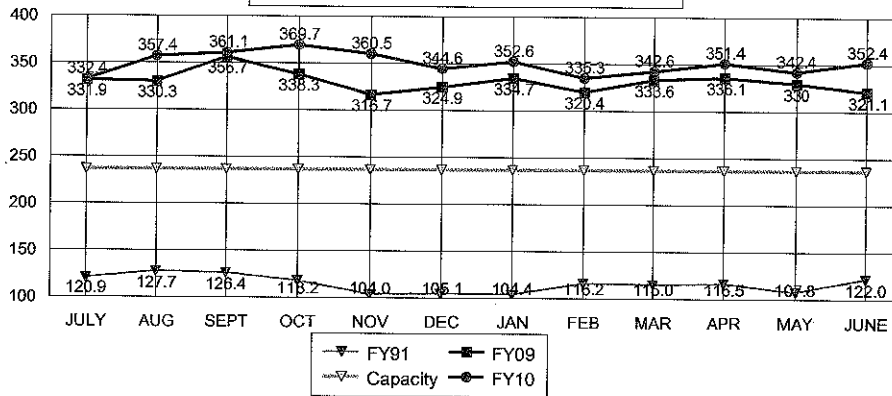


AVERAGES

FY10 TO DATE	494.6
FY09 SAME PERIO	472.6
FY09 TO YR-END	472.6

4.7%	Change in FY09 to date over same period last year
4.7%	Change in FY09 to date over FY08 average to year-end

**JAIL-OFF SITE CO. POPULATION
 FY91, FY09, FY10**

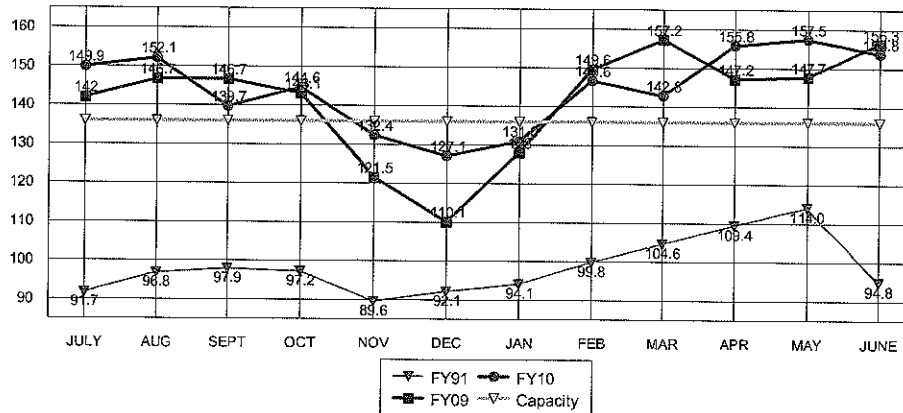


AVERAGES

FY10 TO DATE	350.2
FY09 SAME PERIO	331.2
FY09 TO YR-END	331.2

5.7%	Change in FY09 to date over same period last year
5.7%	Change in FY09 to date over FY08 average to year-end

**LCF-ONLY POPULATION
 FY91, FY09, FY10**



AVERAGES

FY10 TO DATE	144.4
FY09 SAME PERIO	141.3
FY09 TO YR-END	141.3

2.2%	Change in FY09 to date over same period last year
2.2%	Change in FY09 to date over FY08 average to year-end

**LANCASTER COUNTY CORRECTIONS DEPARTMENT
MONTHLY STATUS REPORT**

FISCAL YEAR 2010

	2010												TOTAL TO DATE	
	JUL	AUG	SEP	OCT	NOV	DEC	JAN	FEB	MAR	APR	MAY	JUN		
Average Daily Population	271.9	271.3	271.0	285.6	275.5	270.7	278.3	263.9	282.5	300.6	292.1	293.6	279.8	N/A
High for Month	301	305	289	299	287	288	301	304	311	320	311	321	303.1	N/A
Low for Month	255	245	261	272	260	255	260	340	249	288	276	279	270.0	N/A
Platte County ADP	25.3	24.6	26.7	28.9	29.6	23.3	23.7	17.0	9.0	7.2	6.5	9.1	19.2	N/A
Butler County ADP	17	19	18	17	14	9	9	11	12	11	12	13	13.5	N/A
York County ADP	2	0	0	0	0	0	0	0	0	0	0	0	0.1	N/A
Saunders County ADP	6	29	33	26	27	25	24	28	27	26	27	30	25.7	N/A
Total Number of Bookings	1010	918	889	816	761	675	817	668	796	828	836	873	823.9	9,887
Felony Arrests	157	135	161	163	137	136	145	113	163	160	171	164	150.4	1,805
Misdemeanor Arrests	707	654	602	528	511	430	545	413	504	505	516	556	539.3	6,471
Felons Sentenced	23	16	24	19	16	13	19	26	25	34	31	25	22.6	271
Misdemeanants Sentenced	59	51	57	58	51	55	59	57	59	70	62	65	58.6	703
Held for Other Jurisdictions	64	62	45	48	46	41	49	63	45	59	56	63	53.4	641
Total Conditionally Released	363	312	286	263	278	199	292	216	265	277	270	280	275.1	3,301
Percent Conditionally Released	35.94%	33.99%	32.17%	32.23%	36.53%	29.48%	36.23%	32.34%	33.29%	33.45%	32.30%	32.07%	33.3%	33.3%
Pre-Arrestment Releases	218	180	186	149	160	114	178	119	163	176	161	162	163.8	1,966
Court Disposition Releases	145	132	100	114	118	85	114	97	102	101	109	118	111.3	1,335
Total of Individuals Lodged	647	606	603	553	483	476	525	452	531	551	566	593	548.8	6,586
LANCASTER CORRECTIONAL FACILITY														
Average Daily Population	149.9	152.1	139.7	144.6	132.4	127.1	131.0	146.6	142.8	155.8	157.5	153.8	144.4	N/A
High for Month	157	162	143	156	144	139	146	159	160	164	161	163	154.5	N/A
Low for Month	140	140	137	139	123	106	110	134	138	148	153	145	134.4	N/A
Estimated Value of Inmate Labor	\$4,375	\$5,307	\$3,150	\$3,537	\$3,444	\$3,321	\$4,024	\$4,597	\$4,481	\$5,496	\$3,669	\$3,625	\$4,085	\$49,024
MEDICAL/MENTAL HEALTH SERVICES														
Referred to Jail Physician	43	35	36	59	27	50	40	40	36	32	30	52	40	480
Referred to Mental Health/LRC	7	4	6	7	2	2	6	2	0	3	2	4	4	45
Transferred to Emergency Room	7	5	5	7	3	7	3	9	8	4	1	5	5	64

APPENDIX 2

**LANCASTER COUNTY CORRECTIONS DEPARTMENT
MONTHLY STATUS REPORT**

FISCAL YEAR 2009

INTAKE & DETENTION FACILITY	2009												AVERAGE TO DATE	TOTAL TO DATE
	JUL	AUG	SEP	OCT	NOV	DEC	JAN	FEB	MAR	APR	MAY	JUN		
Average Daily Population	275.5	275.4	297.6	278.0	262.2	274.8	281.6	270.5	280.3	275.9	271.2	266.2	275.8	N/A
High for Month	304	300	318	315	281	300	294	294	310	299	294	287	299.7	N/A
Low for Month	259	258	277	256	247	257	268	252	248	258	253	248	256.8	N/A
Platte County ADP	26.0	26.0	31.4	31.0	27.0	25.0	26.0	25.1	26.0	31.3	28.6	24.6	27.3	N/A
Butler County ADP	16	16	16	15	14	16	17	16	19	19	19	16	16.6	N/A
York County ADP	8	7	5	6	5	2	4	3	3	4	3	4	4.4	
Total Number of Bookings	1073	1097	1034	956	870	809	911	849	936	825	981	798	928.3	11,139
Felony Arrests	174	173	175	165	143	158	167	142	159	152	165	146	159.9	1,919
Misdemeanor Arrests	777	790	752	687	615	542	615	584	633	568	646	524	644.4	7,733
Felons Sentenced	10	11	11	14	11	11	15	11	11	13	23	25	14.4	173
Misdemeanants Sentenced	54	57	44	35	54	45	58	60	74	38	82	57	54.8	658
Held for Other Jurisdictions	99	59	52	55	47	46	56	52	59	54	65	46	57.5	690
Total Conditionally Released	413	432	377	395	364	294	324	337	318	267	368	246	344.6	4,135
Percent Conditionally Released	38.49%	39.63%	36.46%	41.32%	41.84%	36.34%	35.57%	39.69%	33.97%	32.36%	37.51%	30.83%	37.0%	37.0%
Pre-Arrestment Releases	241	247	232	227	210	165	184	186	177	173	210	152	200.3	2,404
Court Disposition Releases	172	185	145	168	154	129	140	151	141	94	158	94	144.3	1,731
Total of Individuals Lodged	669	658	657	561	506	515	587	512	618	558	613	552	583.8	7,006
LANCASTER CORRECTIONAL FACILITY														
Average Daily Population	142.0	146.7	146.7	143.1	121.5	110.1	128.0	149.6	157.2	147.2	147.7	156.3	141.3	N/A
High for Month	151	158	159	163	131	124	149	156	162	160	160	165	153.2	N/A
Low for Month	129	140	134	111	107	95	106	142	149	138	138	148	128.1	N/A
Estimated Value of Inmate Labor	\$3,910	\$3,419	\$2,862	\$2,934	\$2,627	\$3,406	\$2,666	\$2,417	\$3,884	\$4,284	\$6,308	\$5,188	\$3,659	\$43,905
MEDICAL/MENTAL HEALTH SERVICES														
Referred to Jail Physician	36	51	42	46	19	33	35	26	50	54	40	29	38	461
Referred to Mental Health/LRC	1	2	4	7	3	3	2	1	0	3	4	4	3	34
Transferred to Emergency Room	6	6	12	7	4	2	10	8	6	7	6	4	7	78

APPENDIX 3