

# LANCASTER COUNTY CORRECTIONS DEPARTMENT

---

605 SOUTH TENTH STREET  
LINCOLN, NE 68508  
(402) 441-7530  
FAX: 441-8946

MICHAEL THURBER, DIRECTOR

## LANCASTER COUNTY CORRECTIONS BOARD

### -AGENDA-

February 4, 2010  
Thursday @ 8:45

**LANCASTER COUNTY CORRECTIONS BOARD**

**- AGENDA -**

**Thursday, Feb. 4, 2010  
8:45 a.m.**

- I. Approval of the October 15, 2009 Meeting**
  
- II. Population Statistics**
  - A. Population Comments
  - B. Population Graphs-Appendix 1
  - C. Calendar Year 2008 Monthly Statistical Report-Appendix 2
  - D. Calendar Year 2009 Monthly Statistical Report-Appendix 3
  
- III. Department Activities**
  - A. Training
  - B. Mental Health Jail Diversion Project
  - C. Out of County Housing
  - D. LCF/Work Crew Activities
  - E. Programs Division
  - F. Revenue Update
  
- IV. New Business/Transition Activities**
  
- V. Adjournment**

Attachments.

- 1- October 15, 2009 Minutes
- 2- Population Graphs
- 3- Monthly Status Reports

## Lancaster County Corrections Board

Meeting of Thursday, Feb. 4, 2010

### I. APPROVAL OF MINUTES- Oct. 15, 2009

II. POPULATION STATISTICS	<u>2008</u>	<u>2009</u>	Change
	Oct.-Dec.	Oct.-Dec.	
Average Daily Population	440.5	478.6	+ 8.6%
JAIL/ Platte/Butler	315.6	343.9	+ 9.0 %
LCF	124.9	134.7	+ 7.8 %
<b>Total Bookings</b>	<b>2,635.0</b>	<b>2,252.0</b>	<b>- 14.5%</b>
Average per month	878.3	750.7	
<b>Total Lodgings</b>	<b>1,582.0</b>	<b>1,512.0</b>	<b>- 4.4 %</b>
Average per month	527.3	504.0	
<b>Platte County Inmate Housing (Sept. '05)</b>			
Average per month	27.7	27.3	- 1.4%
<b>Butler County Inmate Housing (May '07)</b>			
Average per month	15.0	13.3	- 11.1%
<b>York County Inmate Housing (Oct. '07)</b>			
Average per month	4.2	0.0	
<b>Saunders Co. Inmate Housing (July '09)</b>	0.0	26.0	+ 42.0%
Average per month			

#### A. Population Comments

Comparing our inmate population from the fourth quarter of 2009 with the same time period of 2008, we have experienced an 8.6% overall population growth. However, during the same time period, we have experienced a decrease in the overall bookings.

Traditionally, the fourth quarter of our population trends have been lower than the remaining quarters of each year. We continue to house out-of-county inmates in three primary counties. As we progress through 2010, we will be presenting to the Board a fourth county jail for potential housing of out-of-county prisoners. We currently are experiencing a faster daily population increase during the past month (January 2010).

#### B. Population Graph (see attached) Appendix 1

The population graph shows the month to month populations for FY09 and FY10. This graph shows the facility's rated capacity as of 1991 when the Adult Detention Facility opened.

#### C. Monthly Statistical Report (see attached) Appendix 2 & 3, FY09 & FY10

This is a statistical report giving the average daily population for both facilities, number of bookings, types of arrests and releases, as well as medical and mental health services provided.

### **III. DEPARTMENT ACTIVITIES**

#### **A. TRAINING**

In the period from October-December, 2009, the training division handled approximately 500 applications for Correctional Officer positions and 37 applications for Corrections Nurse. Orientation training was provided for two new officers, one full-time and one on-call, along with one nurse.

Three Full-Time Officers completed the 12 week Field Training Officer Program, designed to help in the training of new officers in their first three months on the job. One other officer was still a part of the program by the end of this period.

An in-service training class was conducted for all uniformed staff. The topic was Intra-Personal Communication Skills. This class was developed by the National Institute of Corrections.

#### **B. MENTAL HEALTH JAIL DIVERSION PROJECT**

The Mental Health Jail Diversion Project has accepted seven new individuals, successfully closed two cases and terminated ten. Initial screenings were completed on 38 individuals during this quarter. Currently, they have 33 active participants. Five are currently enrolled in Drug Court and no referrals have been made to Community Corrections during this quarter.

From October-December, 2009, the Diversion Project had very few individuals eligible to consider for the program. A primary barrier was the level of charges for the persons identified during this period. There was a significant number of felony drug possessions as well as serious domestic assaults that were not eligible for consideration. Their case load numbers were very low during the month of December but numbers are increasing and looking to return to normal for the next quarter.

#### **C. OUT OF COUNTY HOUSING**

Lancaster County continues to house inmates in Platte, Butler, and Saunders counties due to overcrowding. During the months of October, November and December 2009, we maintained an average population of 27.3 inmates in Platte County. During this same time period, 21 round trips were made moving 114 inmates between the two facilities.

Butler County's average population for this time period was 13.3 with 44 inmates moved between the two facilities.

Saunders County's average population for this period was 26. One hundred ten inmates were moved between the two facilities.

In addition, the transport division transported 2,729 inmates to court, medical appointments or other locations. This required approximately 1,304 staff hours to complete.

**D. LCF & WORK CREW ACTIVITIES**

In October 2009, work crews kept busy repairing ceilings, walls and hallway areas at LCF. This consisted of spraying texture on ceilings that had water damage and painting drywall. The crews also did routine maintenance and moved surplus furniture from the County-City Building to the K Street Complex.

Crews continued remodeling at LCF during the months of November and December including routine maintenance, extensive snow removal projects, and cleaning equipment rooms.

**E. PROGRAMS DIVISION**

The Correctional Specialists coordinated an average of 38 evaluations per month with the consulting psychiatrist in the months of October, November and December, 2009. An average of four inmates per month were placed into Emergency Protective Custody and transferred with a jail hold to the Crisis Center or Lincoln Regional Center, due to meeting the criteria of mental illness and dangerousness to oneself or others.

Correctional Specialists had an average of 557 contacts with inmates this quarter, in which mental health, personal problems, or coping with confinement concerns were addressed.

In addition to attending to the mental health needs of inmates, and providing support and assistance in coping with confinement, Correctional Specialists and the Chaplain coordinated an average of 130 educational, self-help, and religious programs per month during this time period. This number represents programs offered at both the downtown Intake & Detention Facility and the Airpark Lancaster Correctional Facility.

The Work Release Coordinator reviewed an average of 164 court ordered release applications per month in October, November & December, 2009. This number reflects both District and County Court applications. The average number of individuals on work release in these months was 36.

Programs staff began discussion with personnel from Cornhusker Place to seek collaboration and development of enhanced substance abuse related programming for inmates at the jail. The identified goals include moving towards education and evaluation components initially, with the objective of further expansion in a treatment based direction.

The Fall of 2009 brought unique program opportunities to LCF. Professor James Perry from Nebraska Wesleyan University brought sixteen of his students from his Corrections Class into the facility and facilitated the first LCF Book Club. Twenty-two inmates participated in the Book Club over the course of ten weeks. The Book Club read two book selections, "Broken For You" by Stephanie Kallos and "The Worst Hard Time" by Timothy Egan. This program was viewed as a great learning opportunity by both the students and inmates that participated. The benefits of Book Club reached beyond the club itself, as the inmate participants sparked interest in the books throughout the inmate population and much impromptu discussion. We are hopeful to be able to continue to work with Professor Perry on additional joint program ventures.

With the ending of the Book Club, Wesleyan student Jena Bonenberger, provided us with another program opportunity to participate in Wesleyan's "Bowls for Backpacks" Empty Bowls fundraiser. Jena made several clay bowls and the LCF inmates have used their artistic creativity to paint them for the upcoming Bowls for Backpacks: Empty Bowls Fundraiser. For the price of \$15, people can purchase a ticket to the soup luncheon and go home with a clay bowl as a reminder of the fight against hunger. Proceeds from the event go to the Lincoln Food Bank's Back Pack Program which sends identified low-income children home from school with a back pack full of a weekend worth of healthy food for their entire family every Friday. This program has given the LCF inmates a constructive outlet for their talents and provided them with the opportunity to give back to the community.

#### **F. REVENUE UPDATE**

As of December 31, 2009, we have collected \$764,766 in revenues of the possible \$1,051,000 budgeted, leaving \$286,234 remaining in collections for FY10. Out of the collected funds, \$458,500 was collected under LB695, state prisoner housing reimbursement. The State of Nebraska has been invoiced for the second quarter in the amount of \$381,395. If we receive this payment in full, along with all other incoming revenues for the remainder of FY10, we should exceed expected revenues by \$250,000.

The County Board should be aware since July 2002 to December 2009, the State of Nebraska has failed to reimburse Lancaster County \$5,760,000 for prisoner housing.

#### **IV. NEW BUSINESS/TRANSITION ACTIVITIES**

During this quarter, work continued on many aspects of this project. The Corrections Team reviewed and located security bars needed to be placed in the HVAC duct system. This involved identifying duct routes that penetrated the security perimeter which could have provided an adequate vehicle for defeating this perimeter.

Meetings were conducted with Information Services to ensure and coordinate adequate cabling routes and equipment storage. Discussion with public works regarding fiber optic delivery to the facility has been on going and will continue.

The Corrections Team reviewed all of the door and window frame designs as well as locations. This information was used to determine the quantity of attic stock that will be needed. Glazing panels at the most risk of being damaged where located and additional panels where requested for on site storage providing efficient and timely replacement.

Several meetings were conducted between public works, HWS, TCEP and the jail team regarding the intersection design. These meets have been fruitful and at this point, it appears the intersection will meet everybody's needs.

Presentations to staff were conducted, bringing them up to date on the projects progress as well as giving them their first look at the cells being constructed.

The process of reviewing departmental policies has begun. This review will identify those policies that will require modifications due to the change in facility design or departmental philosophy.

**MINUTES  
BOARD OF CORRECTIONS  
QUARTERLY MEETING  
COUNTY-CITY BUILDING, ROOM 113  
THURSDAY, OCTOBER 15, 2009  
8:45 A.M.**

Board Members Present: Bob Workman, Vice Chair  
Larry Hudkins  
Ray Stevens  
Deb Schorr

Board Members Absent: Bernie Heier, Chair

Others Present: Mike Thurber, Corrections Director  
Brad Johnson, Transition Coordinator  
Kerry Eagan, Chief Administrative Officer  
Gwen Thorpe, Deputy Chief Administrative Officer  
Dan Nolte, County Clerk  
Cori Beattie, Deputy County Clerk  
Ann Taylor, County Clerk's Office

The Vice Chair opened the meeting at 8:47 a.m.

**AGENDA ITEM**

**1 APPROVAL OF BOARD OF CORRECTIONS MINUTES OF THURSDAY, SEPTEMBER 10, 2009**

**MOTION:** Stevens moved and Hudkins seconded approval of the September 10, 2009 Board of Corrections Meeting minutes. Hudkins, Stevens, Schorr and Workman voted aye. Motion carried.

**2 POPULATION STATISTICS**

A. Population Comments

Mike Thurber, Corrections Director, reported a 1.5% increase in average daily population, compared to the same period in 2008. The highest daily population occurred on August 19<sup>th</sup> when the department housed 537 inmates. Total lodgings declined 6% this quarter which indicates inmates are being held longer.



## B. Population Graphs

See agenda packet.

## C. Monthly Statistical Report

See agenda packet.

# **3 DEPARTMENT ACTIVITIES**

## A. Training

Thurber said there were 555 applications for Correctional Officer positions this quarter, adding there is only one opening at this time. He said the Officers' Training Academy and Field Training Officer Program were offered this quarter. Training was also provided to Community Corrections employees.

## B. Mental Health Jail Diversion Program

Thurber said 11 individuals were accepted into the Mental Health Jail Diversion Program this quarter. There are currently 38 active participants. Five are enrolled in Drug Court and two were referrals from Community Corrections. A new Recovery Specialist was also hired for the program this quarter.

## C. Out-of-County Housing

Thurber said they continue to house inmates in Butler, Platte, Saunders and York Counties, due to overcrowding.

## D. Lancaster Correctional Facility (LCF)/Work Crew Projects

Thurber said jail work crew activities included assisting other departments with moves, collecting food barrels for the Food Bank Drive and routine facility maintenance.

## E. Programs Division

Thurber said there were an average of 36 evaluations per month with the consulting psychiatrist this quarter. An average of three inmates per month were placed into Emergency Protective Custody and transferred to the Crisis Center or Lincoln Regional Center with a jail hold.

Thurber also reported that more than 219 educational, self-help and religious programs were provided to inmates per month during this quarter.

#### 4 NEW BUSINESS/TRANSITION ACTIVITIES

##### A. Design Review

Brad Johnson, Transition Coordinator, said he participated in a review of all architectural and detention doors for the new facility. He said they also reviewed the elevator design and fencing options.

##### B. Coordination

Johnson said there are weekly meetings with Sampson Construction (Construction Manager at-Risk) and regular meetings with Clark Enersen (architect) to review shop drawings. He said Bob Jarrett, Corrections Maintenance/Construction Manager, is reviewing each document conveyed between the contractors to see if there are any issues the County needs to monitor.

##### C. Tour

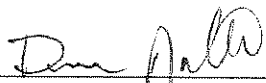
Johnson said a contingent from Lancaster County recently toured the Tindall Plant (precast, prestressed concrete plant) in San Antonio, Texas and inspected the cell modules they have constructed. He said some minor issues were observed, which the manufacturer has agreed to correct.

##### D. Groundbreaking

Johnson reported that nearly 100 individuals attended the groundbreaking ceremony on July 14<sup>th</sup>.

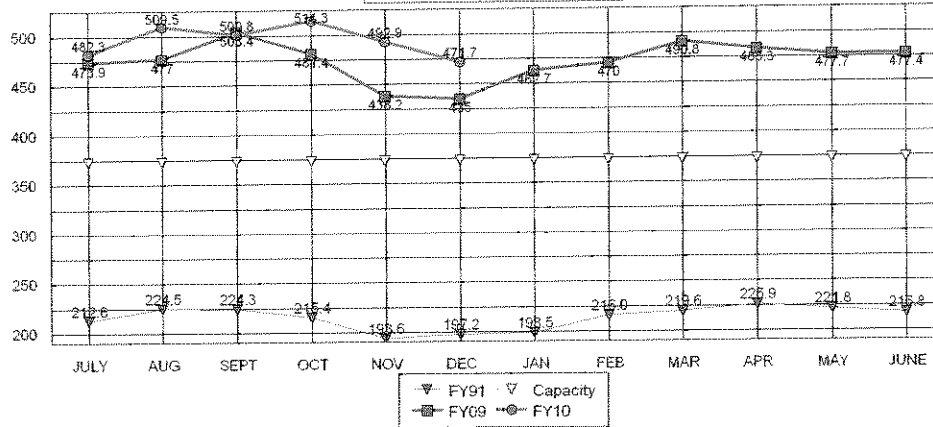
#### 5 ADJOURNMENT

**MOTION:** Schorr moved and Hudkins seconded to adjourn the meeting at 9:07 a.m. Schorr, Stevens, Hudkins and Workman voted aye. Motion carried.

  
\_\_\_\_\_  
Dan Nolte  
Lancaster County Clerk



**TOTAL POPULATIONS  
 FY91, FY09, FY10**

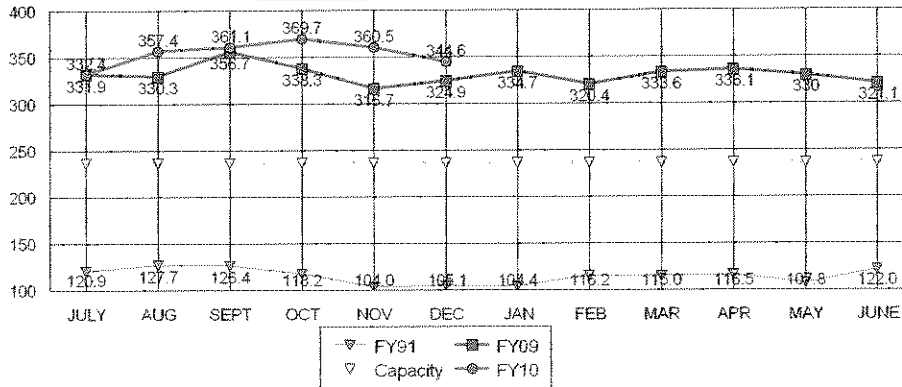


AVERAGES

FY10 TO DATE	495.3
FY09 SAME PERIOD	468.2
FY09 TO YR-END	472.6

5.8% Change in FY09 to date over same period last year
4.8% Change in FY09 to date over FY08 average to year-end

**JAIL-OFF SITE CO. POPULATION  
 FY91, FY09, FY10**

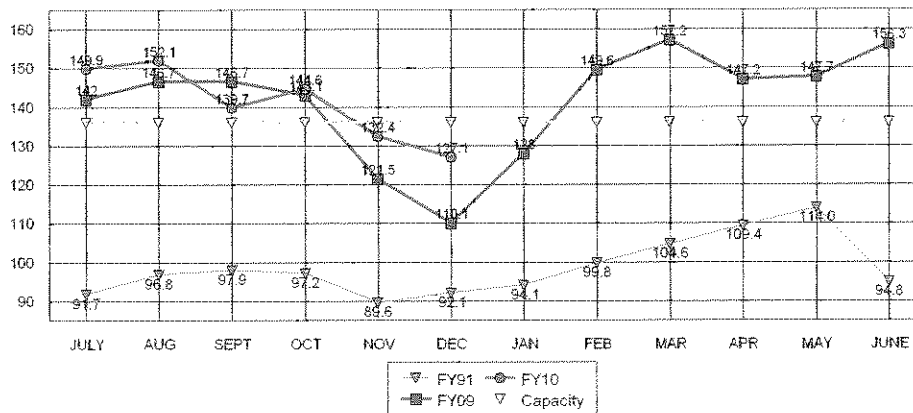


AVERAGES

FY10 TO DATE	354.3
FY09 SAME PERIOD	333.1
FY09 TO YR-END	331.2

6.3% Change in FY09 to date over same period last year
7.0% Change in FY09 to date over FY08 average to year-end

**LCF-ONLY POPULATION  
 FY91, FY09, FY10**



AVERAGES

FY10 TO DATE	141.0
FY09 SAME PERIOD	135.0
FY09 TO YR-END	141.3

4.4% Change in FY09 to date over same period last year
-0.3% Change in FY09 to date over FY08 average to year-end

LANCASTER COUNTY CORRECTIONS DEPARTMENT  
MONTHLY STATUS REPORT

CALENDAR YEAR 2008

2008

INTAKE & DETENTION FACILITY	JAN	FEB	MAR	APR	MAY	JUN	JUL	AUG	SEPT	OCT	NOV	DEC	AVERAGE TO DATE	TOTAL TO DATE
Average Daily Population	241.9	242.6	271.2	255.3	251.7	279.6	275.5	275.4	297.6	269.0	262.2	274.8	266	N/A
High for Month	263	259	290	276	268	300	304	300	318	315	281	300	290	N/A
Low for Month	221	229	245	228	227	258	259	258	277	256	247	257	247	N/A
Platte County ADP	39.3	32.9	39.9	44.5	34.4	34.8	26.0	26.0	31.4	31.0	27.0	25.0	33	N/A
Butler County ADP	12.8	11.9	12.5	14.5	14.2	14.1	16.1	16.0	15.7	15.0	14.0	16.0	14	N/A
York County ADP	4.5	1.1	0.0	0.0	0.0	1.0	7.5	7.0	5.3	5.6	5.1	2.0	3	N/A
Total Number of Bookings	770	744	790	769	865	968	1073	1090	1034	956	870	809	895	10,738
New Bookings	205	217	214	224	207	265	277	286	279	272	223	222	241	2,891
Felony Arrests	131	141	174	151	182	168	174	173	175	165	143	143	161	1,935
Misdemeanor Arrests	510	444	499	511	563	688	777	790	752	687	615	542	613	7,358
Domestic Violence Arrests	62	50	54	65	57	42	93	77	76	52	53	61	62	742
DWI Arrests	69	66	72	64	83	62	78	101	95	78	81	78	77	927
Felons Sentenced	14	21	10	7	13	16	10	11	11	14	11	18	13	156
Misdemeanants Sentenced	59	67	57	41	57	55	54	57	44	35	54	45	52	625
Held for Other Jurisdictions	56	71	50	59	50	61	99	59	52	55	47	46	59	705
Total Conditionally Released	302	298	323	335	340	403	413	432	377	395	364	294	356	4,276
Percent Conditionally Released	39.22%	40.50%	40.89%	43.56%	39.31%	41.63%	38.49%	39.63%	36.46%	41.32%	41.84%	36.35%	40%	N/A
Pre-Arrestment Releases	219	220	237	242	249	260	241	247	232	227	210	165	229	2,749
Court Disposition Releases	84	78	86	93	91	143	172	185	145	168	154	129	127	1,528
Total of Individuals Lodged	468	446	467	434	525	565	660	658	657	561	506	515	539	6,462

LANCASTER CORRECTIONAL FACILITY

Average Daily Population	115.6	120.5	126.6	126.3	118.2	125.4	142.0	146.7	146.7	143.1	121.5	110.1	129	N/A
High for Month	126	132	137	140	130	141	151	158	159	163	131	124	141	N/A
Low for Month	103	110	114	109	103	113	129	140	134	111	107	95	114	N/A
Estimated Value of Inmate Labor @ \$6.55	\$1,864	\$2,230	\$2,220	\$2,245	\$1,797	\$2,838	\$3,910	\$3,419	\$2,862	\$2,934	\$2,627	\$3,406	\$2,696	\$32,353

MEDICAL/MENTAL HEALTH SERVICES

Referred to Jail Physician	30	27	29	47	26	28	36	51	42	46	19	33	35	414
Referred to Mental Health/LRC	4	0	8	2	2	6	1	2	4	7	3	3	4	42
Transferred to Emergency Room	3	5	6	6	11	8	6	6	12	7	4	2	6	76

APPENDIX 2

LANCASTER COUNTY CORRECTIONS DEPARTMENT  
MONTHLY STATUS REPORT

CALENDAR YEAR 2009

2009

	JAN	FEB	MAR	APR	MAY	JUN	JUL	AUG	SEPT	OCT	NOV	DEC	AVERAGE TO DATE	TOTAL TO DATE
<b>INTAKE &amp; DETENTION FACILITY</b>														
Average Daily Population	281.6	270.5	280.3	275.9	271.2	266.2	271.9	271.3	271.0	285.6	275.5	270.7	274	N/A
High for Month	294	294	310	299	294	287	301	305	289	299	287	288	296	N/A
Low for Month	268	252	248	258	253	248	255	245	261	272	260	255	256	N/A
Platte County ADP	26.0	25.1	26.0	31.3	28.6	24.6	25.3	24.6	26.7	28.9	29.6	23.3	27	N/A
Builer County ADP	17.0	16.0	18.9	19.2	19.4	16.4	16.7	18.9	18.1	17.0	14.2	9.0	17	N/A
York County ADP	3.6	3.0	3.3	4.3	3.3	3.7	1.5	0.0	0.0	0.0	0.0	0.0	2	N/A
Saunders County ADP	0.0	0.0	0.0	0.0	0.0	0.0	6.4	29.0	32.9	25.6	26.5	25.0	12	N/A
<b>Total Number of Bookings</b>	911	849	936	825	981	798	1010	918	889	816	761	675	864	10,369
New Bookings	232	241	258	200	237	204	251	252	230	218	189	167	223	2,679
Felony Arrests	167	142	159	152	165	146	157	135	161	163	137	136	152	1,820
Misdemeanor Arrests	58	584	633	568	646	524	707	654	602	528	511	430	537	6,445
Domestic Violence Arrests	54	60	56	45	74	74	59	66	68	51	52	52	59	711
DWI Arrests	83	99	106	76	105	78	109	101	77	76	70	60	87	1,040
Felons Sentenced	15	11	11	13	23	23	23	16	24	19	16	13	17	209
Misdemeanants Sentenced	58	60	74	38	82	57	59	51	57	58	51	55	58	700
Held for Other Jurisdictions	56	52	59	54	65	46	64	62	45	48	46	41	53	638
Total Conditionally Released	324	337	318	267	368	246	363	312	286	263	278	199	297	3,561
Percent Conditionally Released	35.57%	39.69%	33.97%	32.36%	37.51%	30.83%	35.94%	33.99%	32.17%	32.23%	36.53%	29.48%	34%	N/A
Pre-Arrestment Releases	184	186	177	173	210	152	218	180	186	149	160	114	174	2,089
Court Disposition Releases	140	151	141	94	158	94	145	132	100	114	118	85	123	1,472
Total of Individuals Lodged	587	512	618	558	613	552	647	606	603	553	483	476	567	6,808

LANCASTER CORRECTIONAL FACILITY

Average Daily Population	128.0	149.6	157.2	147.2	147.7	156.3	149.9	152.1	139.7	144.6	132.4	127.1	144	N/A
High for Month	149	156	162	160	160	165	157	162	143	156	144	139	154	N/A
Low for Month	106	142	149	138	138	148	140	140	137	139	123	106	134	N/A
Estimated Value of Inmate Labor @ \$6.55	\$2,666	\$2,417	\$3,884	\$4,284	\$6,308	\$5,188	\$4,375	\$5,307	\$3,150	\$3,537	\$3,444	\$3,321	\$3,990	\$47,880

MEDICAL/MENTAL HEALTH SERVICES

Referred to Jail Physician	35	26	50	54	40	29	43	35	36	59	27	50	40	484
Referred to Mental Health/LRC	2	1	0	3	4	4	7	4	6	7	2	2	4	42
Transferred to Emergency Room	10	8	6	7	6	4	7	5	5	7	3	7	6	75

APPENDIX 3