

LANCASTER COUNTY CORRECTIONS DEPARTMENT

605 SOUTH TENTH STREET
LINCOLN, NE 68508
(402) 441-7530
FAX: 441-8946

MICHAEL THURBER, DIRECTOR

LANCASTER COUNTY CORRECTIONS BOARD

-AGENDA-

October 15, 2009
Thursday @ 8:45

LANCASTER COUNTY CORRECTIONS BOARD

- AGENDA -

**Thursday, Oct. 15, 2009
8:45 a.m.**

I. Approval of the September 10, 2009 Meeting

II. Population Statistics

- A. Population Comments
- B. Population Graphs-Appendix 1
- C. Fiscal Year 2009 Monthly Statistical Report-Appendix 2
- D. Fiscal Year 2010 Monthly Statistical Report-Appendix 3

III. Department Activities

- A. Training
- B. Mental Health Jail Diversion Project
- C. Out of County Housing
- D. LCF/Work Crew Activities
- E. Programs Division

IV. New Business/Transition Activities

V. Adjournment

Attachments.

- 1- September 10, 2009 Minutes
- 2- Population Graphs
- 3- Monthly Status Reports
- 4- LCF Community Service Program

Lancaster County Corrections Board
Meeting of Thursday, Oct. 15, 2009

I. APPROVAL OF MINUTES- Sept. 10, 2009

II. POPULATION STATISTICS

	<u>2008</u>	<u>2009</u>	Change
	July-Sept.	July-Sept.	
Average Daily Population	478.4	485.5	+ 1.5%
JAIL/ Platte/Butler	333.3	338.3	+ 1.5 %
LCF	145.1	147.2	+ 1.4 %
Total Bookings	3,204.0	2,817.0	- 12.1 %
Average per month	1,068.0	939.0	
Total Lodgings	1,984.0	1,856.0	- 6.5 %
Average per month	661.3	618.7	
Platte County Inmate Housing (Sept. '05)			
Average per month	27.8	25.6	- 8.7%
Butler County Inmate Housing (May '07)			
Average per month	16.0	18.0	+ 12.5 %
York County Inmate Housing (Oct. '07)			
Average per month	6.7	0.7	- 90.0%
Saunders Co. Inmate Housing (July '09)		22.6	+100.0%
Average per month			

A. Population Comments

Comparing July-September 2009 population to the same period in 2008, the department is showing similar incarceration totals. During the 2009 quarter, we were able to add Saunders County as a new agency to house our inmates that was not available during the 2008 quarter.

During the current quarter, we did show a decline in bookings. The highest daily population was on August 19, where the department had 537 inmates housed. This population trend during the summer months has been very typical in the last four years.

B. Population Graph (see attached) Appendix 1

The population graph shows the month to month populations for FY09 and FY10. This graph shows the facility's rated capacity as of 1991 when the Adult Detention Facility opened.

C. Monthly Statistical Report (see attached) Appendix 2 & 3, FY09 & FY10

This is a statistical report giving the average daily population for both facilities, number of bookings, types of arrests and releases, as well as medical and mental health services provided.

III. DEPARTMENT ACTIVITIES

A. TRAINING

In the period from July 1st through September 30th, the training division handled approximately 555 applications for Correctional Officer positions. Orientation training was provided for five new officers. (one full-time and four on-calls)

Seven Full-Time Officers completed the 12 week Field Training Officer Program, designed to help in the training of new officers in their first three months on the job. Three other officers were still a part of the program by the end of this period.

Nine officers attended the Officer's Training Academy, which is an 80 hour training course intended for officers who have been with the department for approximately 3 to 6 months.

Training was also provided to Community Corrections employees, so they may enter the facility to conduct their screenings.

B. MENTAL HEALTH JAIL DIVERSION PROJECT

The Mental Health Jail Diversion Project has accepted 11 new individuals, successfully closed seven cases and terminated four. Initial screenings were completed on 61 individuals during this quarter. Currently, they have 38 active participants. Five are currently enrolled in Drug Court, two being referrals from Community Corrections.

On September 28, the project hired a Recovery Specialist, Zack Stearns. He will be assisting with client transportation to AA/NA meetings, coordinating the application process for free medication programs and transitioning individuals out of the program. This position is funded through Community Health Endowment (CHE) grant with a commitment from Region V for ongoing funding.

The Diversion Project is in the process of gathering final data for the grant with regards to recidivism and use of emergency services and hope to have that data within the next month. They have seen a significant drop in recidivism and ER usage due to staff getting individuals into the right services and reducing wait time for residential substance abuse services. Substance abuse treatment continues to have wait lists but most of the project's clients have been able to access these services in approximately 3-4 months. Historically, their clients have waited up to 6-8 months.

With the closing of their grant funds, the project has been pursuing alternative funding for the program and began submitting for Magellan and Medicaid reimbursement. This is a cumbersome process. However, with the recent budget cuts, they were able to save one of their case management positions by generating increased revenues from this process.

C. OUT OF COUNTY HOUSING

Lancaster County continues to house inmates in Platte, Butler, York and Saunders counties due to overcrowding. During the months of July, August and September 2009, we maintained an average population of 25.6 inmates in Platte County. During this same time period, 17 round trips were made moving 105 inmates between the two facilities.

Butler County's average population for this time period was 18. Fourty seven inmates were moved between the two facilities.

York County's average population for this period was .7. Two inmates were moved between the two facilities. We stopped housing inmates in July when Saunders County was added.

Saunders County's average population for this period was 22.6. One hundred fifteen inmates were moved between the two facilities.

In addition, the transport division transported 3,175 inmates to court, medical appointments or other locations. This required approximately 1,405 staff hours to complete.

D. LCF/WORK CREW ACTIVITIES

In July 2009, work crews spent several days moving the City Attorney's office from the Hall of Justice to the 3rd floor of the County City Building. They also arranged furniture on the 3rd floor of the K Street Complex for the Purchasing Division in preparation for the upcoming surplus auction. Crews also spent several days in July moving the Senior Citizen Center office and picking up food barrels for the Food Bank Drive.

Crews spent additional hours, in August, moving the Senior Citizen Center office. Time was also spent working on West O Street in preparation for the ground breaking ceremony. The rest of August was spent doing routine maintenance at LCF.

In September, crews spent several days assisting with the set up of the job trailer at the new jail site. Several days were spent at the end of the month moving surplus auction items for several Lancaster County agencies. The remainder of the month was spent doing the annual remodeling and painting of the inmate restrooms at LCF.

E. PROGRAMS DIVISION

The Correctional Specialists coordinated an average of 36 evaluations per month with the consulting psychiatrist in the months of July, August, and September 2009. An average of three inmates per month were placed into Emergency Protective Custody and transferred with a jail hold to the Crisis Center or Lincoln Regional Center, due to meeting the criteria of mental illness and

dangerousness to oneself or others. Correctional Specialists had an average of 443 contacts with inmates each month in July, August, and September 2009, in which mental health, personal problems, or coping with confinement concerns were addressed.

In addition to attending to the mental health needs of inmates, and providing support and assistance in coping with confinement, Correctional Specialists and the Chaplain coordinated an average of 219 educational, self-help, and religious programs per month during this time period. This number represents programs offered at both the downtown Intake & Detention Facility and the Airpark Lancaster Correctional Facility.

The Work Release Coordinator reviewed an average of 197 court ordered release applications per month in July, August, and September 2009. This number reflects both District and County Court applications. The average number of individuals on work release in these months was 35.

In October 2009, Department Director Mike Thurber and Programs Director, Brenda Fisher, gave an informational presentation to the Community Mental Health Center Advisory Committee regarding general plans for the housing and care of mentally inmates in a new jail facility.

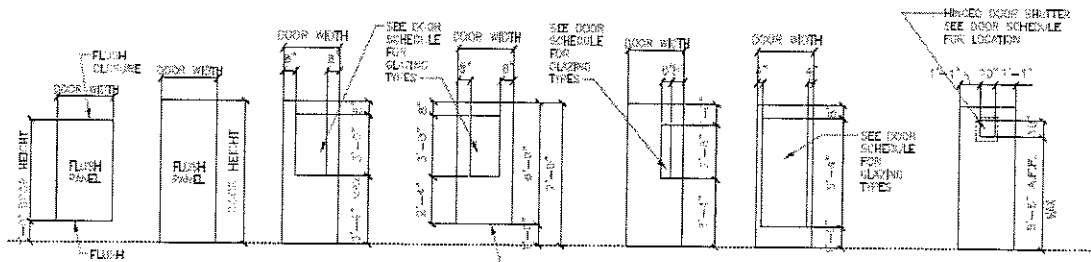
IV. NEW BUSINESS/TRANSITION ACTIVITIES

A. DESIGN REVIEW

During this quarter, design review moved forward. A review of all architectural and detention doors was conducted. This review included door sizes and material but emphasized proper location and glazing options.

ARCHITECTURAL DOOR TYPES:

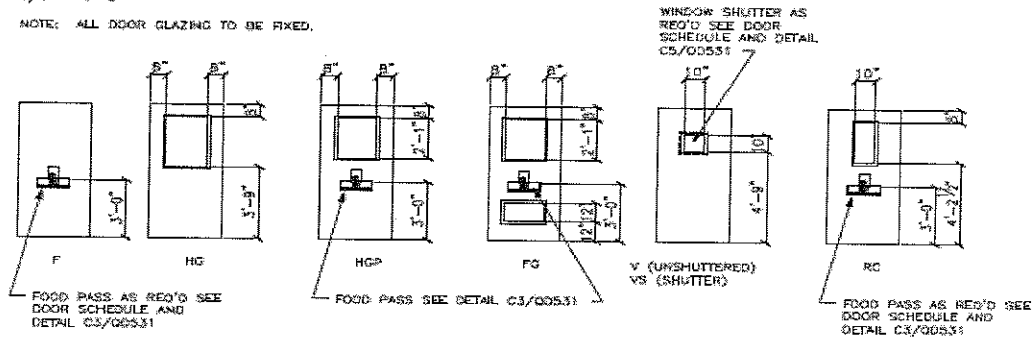
1/4" = 1'-0"



DETENTION DOOR TYPES

1/4" - 1'-3"

NOTE: ALL DOOR GLAZING TO BE FIXED.



We have also looked at the elevator design. Car size and control has been reviewed with Clark Enersen, Latta Technical Services and Sampson Construction.

The Corrections Team, in concert with Clark Enersen and Sampson Construction, reviewed additional fencing needs for the area around the loading dock, warehouse and DEC building. Security concerns have been raised regarding the potential for individuals to approach these areas from the railroad or east property boundaries.

B. COORDINATION

The Corrections Team, Clark Enersen, Don Killeen and Sampson Construction have been participating in weekly meetings to discuss project details and share information.

Bob Jarrett has been reviewing each document that is conveyed between the contractors, Clark Enersen and Sampson Construction. Items that he believes are of interest to us are identified and discussed.

C. TOUR

A tour of the Tindall Plant was recently conducted. Several cell modules have been constructed and a complete inspection of the cells were completed. A few minor issues were observed and resolved satisfactorily with the manufacturer.

D. GROUND BREAKING

On July 14 the ground breaking event occurred. Nearly 100 individuals were on hand to recognize the beginning of this project.



**MINUTES
BOARD OF CORRECTIONS
QUARTERLY MEETING
COUNTY-CITY BUILDING, ROOM 113
THURSDAY, SEPTEMBER 10, 2009
8:45 A.M.**

Board Members Present: Bernie Heier, Chair
Bob Workman, Vice Chair
Larry Hudkins
Ray Stevens
Deb Schorr

Others Present: Mike Thurber, Corrections Director
Bob Jarrett, Corrections Maintenance/Construction
Manager
Brad Johnson, Transition Coordinator
Kerry Eagan, Chief Administrative Officer
Gwen Thorpe, Deputy Chief Administrative Officer
Dan Nolte, County Clerk
Cori Beattie, Deputy County Clerk
Ann Taylor, County Clerk's Office

The Chair opened the meeting at 8:45 a.m.

AGENDA ITEM

**1 APPROVAL OF BOARD OF CORRECTIONS MINUTES OF
THURSDAY, MAY 21, 2009**

MOTION: Hudkins moved and Schorr seconded approval of the May 21, 2009 Board of Corrections Meeting minutes. Workman, Schorr, Hudkins and Heier voted aye. Stevens abstained from voting. Motion carried.

2 POPULATION STATISTICS

A. Population Comments

Mike Thurber, Corrections Director, reported an increase of 7.7% in the average daily population, compared to the same quarter in 2008. The sharpest increase was at the Airpark facility. Bookings averaged 868 during this quarter. He said they continue to house 50 or more inmates out-of-county per day.

Thurber said the Work Release Coordinator reviews an average of 172 court-ordered release applications per month and said the average number of individuals on work release this quarter was 28.

4 NEW BUSINESS/TRANSITION ACTIVITIES

A. Design Review

Brad Johnson, Transition Coordinator, said the design review continues. He said representatives from the Carlson/West/Pavondra Architectural Firm conducted a quality control analysis and said some design changes were made. Meetings were held with Lincoln Police Department (LPD) and Lincoln Sheriff's Office (LSO) representatives to discuss the final version of the pre-book area and both agencies expressed satisfaction. Interior finishes were also selected.

Schorr asked that they bring the design board to the next meeting.

B. District Energy

Johnson said they met with the District Energy Corporation (DEC) and discussed fiber optic development and expectations regarding equipment maintenance.

C. Ground Breaking Event

Johnson said planning and coordination of the ground breaking event took place this quarter.

D. Time Series Camera

Johnson said the pole for the camera has been installed and the camera should be operational in the next two to three weeks.

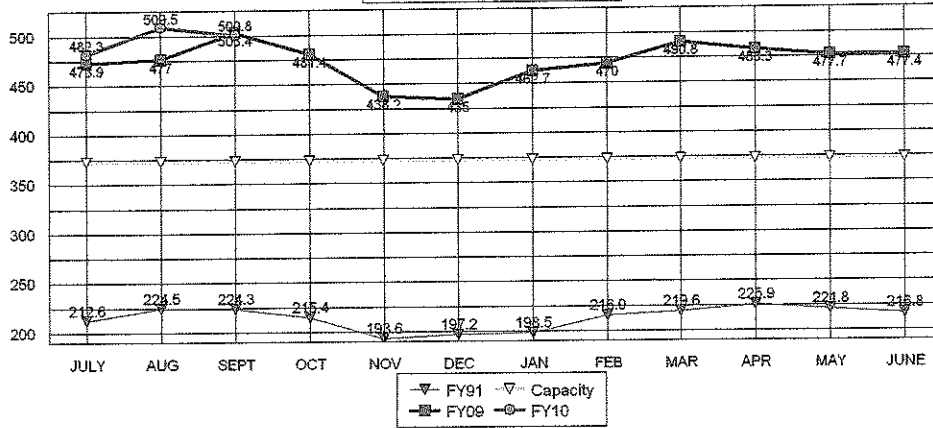
E. Training

Johnson said he attended inmate behavioral management training conducted by the National Institute of Corrections.

F. Presentation

Johnson said he gave a presentation on current facility operations and an overview of the design for the new facility to an Osher Lifelong Learning Institute (OLLI) class from the University of Nebraska and conducted a tour of the current facility.

**TOTAL POPULATIONS
 FY91, FY09, FY10**

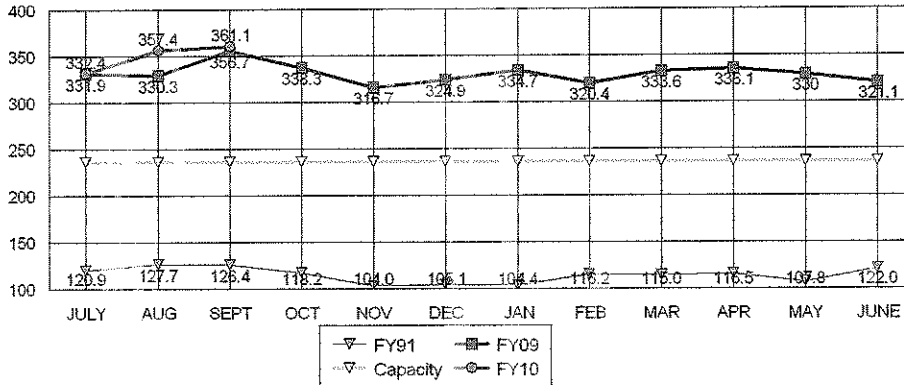


AVERAGES

FY10 TO DATE	497.5
FY09 SAME PERIOD	484.8
FY09 TO YR-END	472.6

2.6%	Change in FY09 to date over same period last year
5.3%	Change in FY09 to date over FY08 average to year-end

**JAIL-OFF SITE CO. POPULATION
 FY91, FY09, FY10**

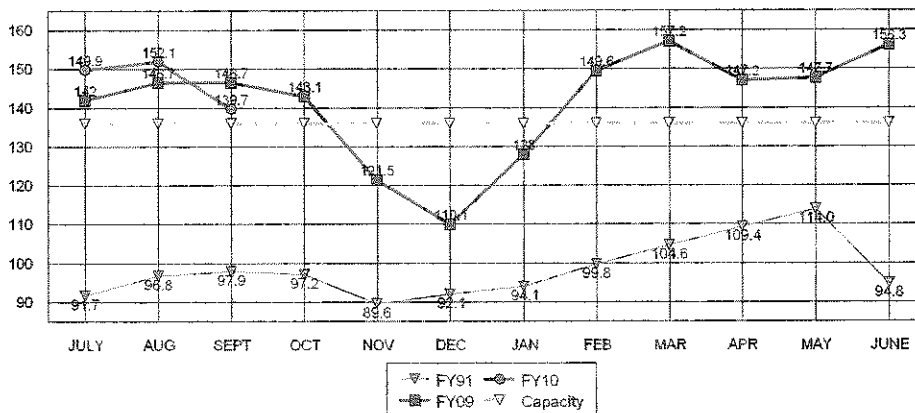


AVERAGES

FY10 TO DATE	350.3
FY09 SAME PERIOD	339.6
FY09 TO YR-END	331.2

3.1%	Change in FY09 to date over same period last year
5.8%	Change in FY09 to date over FY08 average to year-end

**LCF-ONLY POPULATION
 FY91, FY09, FY10**



AVERAGES

FY10 TO DATE	147.2
FY09 SAME PERIOD	145.1
FY09 TO YR-END	141.3

1.4%	Change in FY09 to date over same period last year
4.2%	Change in FY09 to date over FY08 average to year-end

**LANCASTER COUNTY CORRECTIONS DEPARTMENT
MONTHLY STATUS REPORT**

FISCAL YEAR 2010

	2009			AVERAGE TO DATE	TOTAL TO DATE
	JUL	AUG	SEP		
INTAKE & DETENTION FACILITY					
Average Daily Population	271.9	271.3	271.0	271.4	N/A
High for Month	301	305	289	298.3	N/A
Low for Month	255	245	261	253.7	N/A
Platte County ADP	25.3	24.6	26.7	25.5	N/A
Butler County ADP	17	19	18	17.9	N/A
York County ADP	2	0	0	0.5	N/A
Saunders County ADP	6	29	33	22.8	N/A
Total Number of Bookings	1010	918	889	939.0	2,817
Felony Arrests	157	135	161	151.0	453
Misdemeanor Arrests	707	654	602	654.3	1,963
Felons Sentenced	23	16	24	21.0	63
Misdemeanants Sentenced	59	51	57	55.7	167
Held for Other Jurisdictions	64	62	45	57.0	171
Total Conditionally Released	363	312	286	320.3	961
Percent Conditionally Released	35.94%	33.99%	32.17%	34.0%	34.0%
Pre-Arrestment Releases	218	180	186	194.7	584
Court Disposition Releases	145	132	100	125.7	377
Total of Individuals Lodged	647	606	603	618.7	1,856
LANCASTER CORRECTIONAL FACILITY					
Average Daily Population	149.9	152.1	139.7	147.2	N/A
High for Month	157	162	143	154.0	N/A
Low for Month	140	140	137	139.0	N/A
Estimated Value of Inmate Labor	\$4,375	\$5,307	\$3,150	\$4,277	\$12,832
MEDICAL/MENTAL HEALTH SERVICES					
Referred to Jail Physician	43	35	36	38	114
Referred to Mental Health/LRC	7	4	6	6	17
Transferred to Emergency Room	7	5	5	6	17

APPENDIX 2

**LANCASTER COUNTY CORRECTIONS DEPARTMENT
MONTHLY STATUS REPORT**

FISCAL YEAR 2009

INTAKE & DETENTION FACILITY	2009												AVERAGE TO DATE	TOTAL TO DATE
	JUL	AUG	SEP	OCT	NOV	DEC	JAN	FEB	MAR	APR	MAY	JUN		
Average Daily Population	275.5	275.4	297.6	278.0	262.2	274.8	281.6	270.5	280.3	275.9	271.2	266.2	275.8	N/A
High for Month	304	300	318	315	281	300	294	294	310	299	294	287	299.7	N/A
Low for Month	259	258	277	256	247	257	268	252	248	258	253	248	256.8	N/A
Platte County ADP	26.0	26.0	31.4	31.0	27.0	25.0	26.0	25.1	26.0	31.3	28.6	24.6	27.3	N/A
Butler County ADP	16	16	16	15	14	16	17	16	19	19	19	16	16.6	N/A
York County ADP	8	7	5	6	5	2	4	3	3	4	3	4	4.4	
Total Number of Bookings	1073	1097	1034	956	870	809	911	849	936	825	981	798	928.3	11,139
Felony Arrests	174	173	175	165	143	158	167	142	159	152	165	146	159.9	1,919
Misdemeanor Arrests	777	790	752	687	615	542	615	584	633	568	646	524	644.4	7,733
Felons Sentenced	10	11	11	14	11	18	15	11	11	13	23	25	14.4	173
Misdemeanants Sentenced	54	57	44	35	54	45	58	60	74	38	82	57	54.8	658
Held for Other Jurisdictions	99	59	52	55	47	46	56	52	59	54	65	46	57.5	690
Total Conditionally Released	413	432	377	395	364	294	324	337	318	267	368	246	344.6	4,135
Percent Conditionally Released	38.49%	39.63%	36.46%	41.32%	41.84%	36.34%	35.57%	39.69%	33.97%	32.36%	37.51%	30.83%	37.0%	37.0%
Pre-Arriainment Releases	241	247	232	227	210	165	184	186	177	173	210	152	200.3	2,404
Court Disposition Releases	172	185	145	168	154	129	140	151	141	94	158	94	144.3	1,731
Total of Individuals Lodged	669	658	657	561	506	515	587	512	618	558	613	552	583.8	7,006

LANCASTER CORRECTIONAL FACILITY

Average Daily Population	142.0	146.7	146.7	143.1	121.5	110.1	128.0	149.6	157.2	147.2	147.7	156.3	141.3	N/A
High for Month	151	158	159	163	131	124	149	156	162	160	160	165	153.2	N/A
Low for Month	129	140	134	111	107	95	106	142	149	138	138	148	128.1	N/A
Estimated Value of Inmate Labor	\$3,910	\$3,419	\$2,862	\$2,934	\$2,627	\$3,406	\$2,666	\$2,417	\$3,884	\$4,284	\$6,308	\$5,188	\$3,659	\$43,905

MEDICAL/MENTAL HEALTH SERVICES

Referred to Jail Physician	36	51	42	46	19	33	35	26	50	54	40	29	38	461
Referred to Mental Health/LRC	1	2	4	7	3	3	2	1	0	3	4	4	3	34
Transferred to Emergency Room	6	6	12	7	4	2	10	8	6	7	6	4	7	78

**LCF COMMUNITY SERVICE PROGRAM
COUNTY ROAD LITTER PICK-UP
July 2009**

NUMBER OF COUNTY ROAD CLEAN-UP TRIPS: 18

TOTAL INMATE HOURS WORKED: 406

TOTAL STAFF HOURS WORKED: 124

ROAD DISTANCE CLEARED OF LITTER: 141 miles (both sides of road)

BAGS OF LITTER REMOVED: 151

**LCF COMMUNITY SERVICE PROGRAM
COUNTY ROAD LITTER PICK-UP
August 2009**

NUMBER OF COUNTY ROAD CLEAN-UP TRIPS: 14

TOTAL INMATE HOURS WORKED: 345.5

TOTAL STAFF HOURS WORKED: 97

ROAD DISTANCE CLEARED OF LITTER: miles (both sides of road): 98

BAGS OF LITTER REMOVED: 135

LCF COMMUNITY SERVICE PROGRAM
COUNTY ROAD LITTER PICK-UP
September 2009

NUMBER OF COUNTY ROAD CLEAN-UP TRIPS: 15

TOTAL INMATE HOURS WORKED: 360

TOTAL STAFF HOURS WORKED: 105

ROAD DISTANCE CLEARED OF LITTER: 106 miles (both sides of road)

BAGS OF LITTER REMOVED: 178