

LANCASTER COUNTY CORRECTIONS DEPARTMENT

605 SOUTH TENTH STREET
LINCOLN, NE 68508
(402) 441-7530
FAX: 441-8946

MICHAEL THURBER, DIRECTOR

LANCASTER COUNTY CORRECTIONS BOARD

-AGENDA-

.....
September 10, 2009
Thursday @ 8:45
.....

LANCASTER COUNTY CORRECTIONS BOARD

- AGENDA -

**Thursday, Sept. 10, 2009
8:45 a.m.**

I. Approval of the May 21, 2009 Meeting

II. Population Statistics

- A. Population Comments
- B. Population Graphs-Appendix 1
- C. Fiscal Year 2008 Monthly Statistical Report-Appendix 2
- D. Fiscal Year 2009 Monthly Statistical Report-Appendix 3

III. Department Activities

- A. Training
- B. Mental Health Jail Diversion Project
- C. Out of County Housing
- D. LCF/Work Crew Activities
- E. Programs Division

IV. New Business/Transition Activities

V. Adjournment

Attachments.

- 1- May 21, 2009 Minutes
- 2- Population Graphs
- 3- Monthly Status Reports
- 4- LCF Community Service Program-June 2009

Lancaster County Corrections Board

Meeting of Thursday, Sept. 10, 2009

I. APPROVAL OF MINUTES- May 21, 2009

II. POPULATION STATISTICS

	<u>2008</u>	<u>2009</u>	Change
	Apr.-June	Apr.-June	
Average Daily Population	437.9	471.8	+ 7.7%
JAIL/ Platte/Butler	314.6	321.4	+ 2.2 %
LCF	123.3	150.4	+ 22.0 %
Total Bookings	2,602.0	2,604.0	+ 0.1 %
Average per month	867.3	868.0	
Total Lodgings	1,524.0	1,723.0	+ 13.1 %
Average per month	508.0	574.3	
Platte County Inmate Housing (Sept. 05)			
Average per month	37.9	28.2	- 25.7%
Butler County Inmate Housing (May 07)			
Average per month	14.3	18.3	+ 27.9 %
York County Inmate Housing (Oct. 07)			
Average per month	0.3	3.8	+ 1030 %

A. Population Comments

Population statistics for the 2nd quarter compared to the same quarter 2008, had an overall increase of 7.7% in the average daily population. The sharpest increase during this comparison of quarters was at our airpark facility. Between April and June 2009, airpark population increased approximately 22%.

We averaged 868 bookings during this quarter, comparable to the same quarter in 2008. We continue to house 50 or more inmates per day out of county. In mid July, we entered into an agreement with Saunders County to begin housing.

B. Population Graph (see attached) Appendix 1

The population graph shows the month to month populations for FY08 and FY09. This graph shows the facility's rated capacity as of 1991 when the Adult Detention Facility opened.

C. Monthly Statistical Report (see attached) Appendix 2 & 3, FY08 & FY09

This is a statistical report giving the average daily population for both facilities, number of bookings, types of arrests and releases, as well as medical and mental health services provided.

III. DEPARTMENT ACTIVITIES

A. TRAINING

In the period from April 1st through June 30th, the training division handled approximately 538 applications for Correctional Officer positions. Orientation training was provided for nine new officers (three on-call, six full-time).

Five full-time officers completed the twelve week Field Training Officer Program, designed to help in the training of new officers in their first three months on the job. Eleven other officers were still a part of the program by the end of this period.

Nine officers attended the Officer's Training Academy, which is an 80 hour training course intended for officers who have been with the department for approximately 3 to 6 months.

B. MENTAL HEALTH JAIL DIVERSION PROJECT

The Mental Health Jail Diversion Project has accepted ten new individuals, successfully closed five cases and terminated two. Initial screenings were completed on 63 people during this quarter.

The project is in the process of hiring a new Recovery Specialist for the program, funded by a CHE grant. The Recovery Specialist is a peer position. They assist with transportation, facilitate peer groups for people in the program, and take individuals to AA or NA meetings on a scheduled basis. They also assist with individuals who are transitioning out of the program.

C. OUT OF COUNTY HOUSING

Lancaster County continues to house inmates in Platte, Butler, and York counties due to overcrowding. During the months of April, May, and June 2009, we maintained an average population of 28.2 inmates in Platte County. During this same time period, 28 round trips were made moving 133 inmates between the two facilities.

Butler County's average population for this time period was 18.3. Sixty-one inmates were moved between the two facilities.

York County's average population for this period was 3.8. Thirteen inmates were moved between the two facilities.

In addition, the transport division transported 2,943 inmates to court, medical appointments or other locations. This required approximately 1,368 staff hours to complete.

D. LCF/WORK CREW ACTIVITIES

In April 2009, work crews assisted the Election Commissioner loading voting equipment. They also installed new carpeting in the booking area Sergeant's Office at the Intake & Detention Facility. During the same month, they also started doing some removal of old farm equipment located on the West O Street property. The rest of the month was spent on routine maintenance and getting HVAC systems spring maintenance completed for the upcoming cooling season.

Crews spent additional hours assisting the Election Commissioner during the month of May. Crews began demolition of a large out building located on the new jail property. This included removal of several concrete areas along with a abandoned well and several septic tanks.

Demolition continued during the month of June on West O Street. Crews spent time working on the removal of the house, footings and backfilling of the house's basement. They finished this project on June 23. The rest of the month was spent on routine maintenance at LCF. On June 28, they began moving the City Attorney's office.

E. PROGRAMS DIVISION

The Correctional Specialists coordinated an average of 30 evaluations per month with the consulting psychiatrist in the months of April, May and June 2009, and an average of 4 inmates per month was placed into Emergency Protective Custody and transferred with a jail hold to the Crisis Center or Lincoln Regional Center, due to meeting the criteria of mental illness and dangerousness to self or others. Correctional Specialists had an average of 434 contacts with inmates each month during this quarter, in which mental health, personal problems, or coping with confinement concerns were addressed.

In addition to attending to the mental health needs of inmates, and providing support and assistance in coping with confinement, Correctional Specialists and the Chaplain coordinated an average of 179 educational, self-help, and religious programs per month during this time period. This number represents programs offered at both the downtown Intake & Detention Facility and the Airpark Lancaster Correctional Facility.

The Work Release Coordinator reviewed an average of 172 court ordered release applications per month in April, May and June 2009. This number reflects both District and County Court applications. The average number of individuals on work release in these months was 28.

IV. NEW BUSINESS/TRANSITION ACTIVITIES

1. Design Review

During this quarter, design review continued. Representatives from Carlson/West/Pavondra Architectural Firm conducted and presented their quality control analysis. Several meetings were utilized to review this analysis and adjust design features to improve cost effectiveness as well as facility efficiencies.

Meetings with LSO and LPD were conducted to present and finalize pre-booking design features. Both agencies expressed satisfaction and excitement for this area.

Interior finishes were selected after consultation with Clark Enersen and Carlson/West/Pavondra interior designers. In addition, numerous aspects were finalized including HVAC vent design, bathroom accessories and window tinting.

2. District Energy

Discussed maintenance expectations concerning geothermal heat pump equipment. Participated in discussion concerning fiber optic development to the future site.

3. Ground Breaking Event

Initiated planning and coordination of the ground breaking event. Considerable coordination with Clark Enersen, Sampson Construction and the Correction's committee concerning event details were synchronized.

4. Time Series Camera

Research and coordination with public works and information services regarding utilization of a project camera was initiated. Various meetings were conducted to determine appropriate location, camera type and image storage options.

5. Training

Attended training conducted by the National Institute of Corrections concerning inmate behavioral management. A review of current management techniques was conducted and several unutilized techniques were identified and under consideration for future development.

6. Presentation

An Osher Lifelong Learning Institute class from UNL requested a presentation concerning current facility operations and an over view of the design for the new facility. A presentation illustrating current statistics and projected trends was developed and communicated. A tour of the current facility emphasizing over crowding issues was conducted.

**MINUTES
BOARD OF CORRECTIONS
QUARTERLY MEETING
COUNTY-CITY BUILDING, ROOM 113
THURSDAY, MAY 21, 2009
9:00 A.M.**

Board Members Present: Bernie Heier, Chair
Bob Workman, Vice Chair
Larry Hudkins
Deb Schorr

Board Members Absent: Ray Stevens

Others Present: Mike Thurber, Corrections Director
Bob Jarrett, Corrections Maintenance/Construction
Manager
Brad Johnson, Transition Coordinator
Kerry Eagan, Chief Administrative Officer
Gwen Thorpe, Deputy Chief Administrative Officer
Dan Nolte, County Clerk
Cori Beattie, Deputy County Clerk
Ann Taylor, County Clerk's Office

The Chair opened the meeting at 8:48 a.m.

AGENDA ITEM

**1 APPROVAL OF BOARD OF CORRECTIONS MINUTES OF
THURSDAY, FEBRUARY 19, 2009**

MOTION: Hudkins moved and Schorr seconded approval of the February 19, 2009 Board of Corrections Meeting minutes. Hudkins, Schorr, Workman and Heier voted aye. Motion carried.

2 POPULATION STATISTICS

A. Population Comments

Mike Thurber, Corrections Director, reported a 10% increase in average daily population for the first quarter of 2009, compared to the same period in 2008. The sharpest increase was at the work release facility in Airpark (an increase of 24 inmates).

In response to a question from Heier, Thurber said transportation remains an issue in negotiating a contract with Hall County.

D. Lancaster Correctional Facility (LCF)/Work Crew Projects

Thurber said the work crews' projects include moving furniture for other departments; painting, remodeling and routine maintenance projects; pulling wires for antennas; and picking up scrap metal for disposal.

Heier asked whether the Parks and Recreation Department has requested labor to help mow city parks.

Thurber said no. He explained that the composition of the work crews has changed and greater supervision is needed.

E. Programs Division

Thurber said an average of one inmate per month was placed in Emergency Protective Custody (EPC) and transferred to the Crisis Center. He also reported there is an average of 26 evaluations per month with the consulting psychiatrists. Thurber reported that Travis Parker, Community Mental Health Center Deputy Director, is working with the University of Nebraska Public Policy Center on screening questions for all jails throughout the State.

Thurber said the Work Release Coordinator reviewed an average of 149 court-ordered release applications this quarter and said the average number of individuals on work release during these months was 32.

4 NEW BUSINESS/TRANSITION ACTIVITIES

A. Design Review


Brad Johnson, Transition Coordinator, said the department has continued to review and fine tune the designs for the new jail. He said a lot of attention was given to refining plans for the special needs area.

B. Millwork

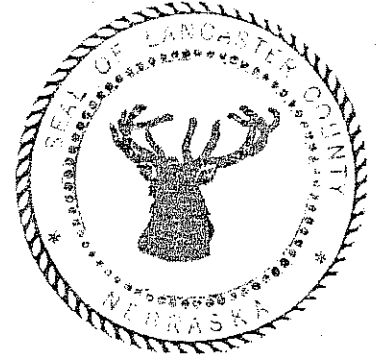
Johnson said staff reviewed and made changes to the architect's millwork drawings.

5 ADJOURNMENT

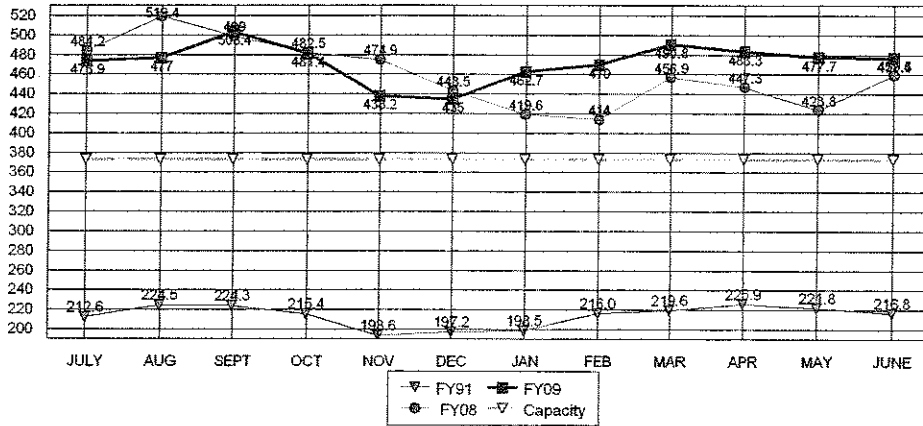
MOTION: Schorr moved and Hudkins seconded to adjourn the meeting at 9:31 a.m. Hudkins, Workman, Schorr and Heier voted aye. Motion carried.



Dan Nolte
Lancaster County Clerk



**TOTAL POPULATIONS
 FY91, FY08, FY09**

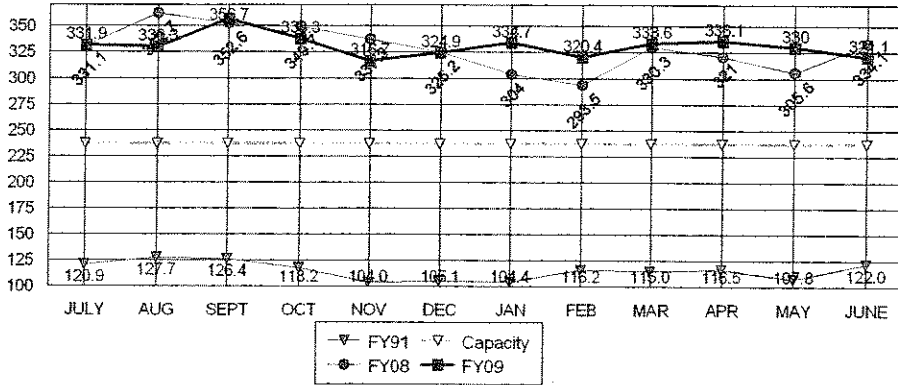


AVERAGES

FY09 TO DATE	472.6
FY08 SAME PERIOD	460.4
FY08 TO YR-END	460.4

2.6%	Change in FY08 to date over same period last year
2.6%	Change in FY08 to date over FY07 average to year-end

**JAIL-OFF SITE CO. POPULATION
 FY91, FY08, FY09**

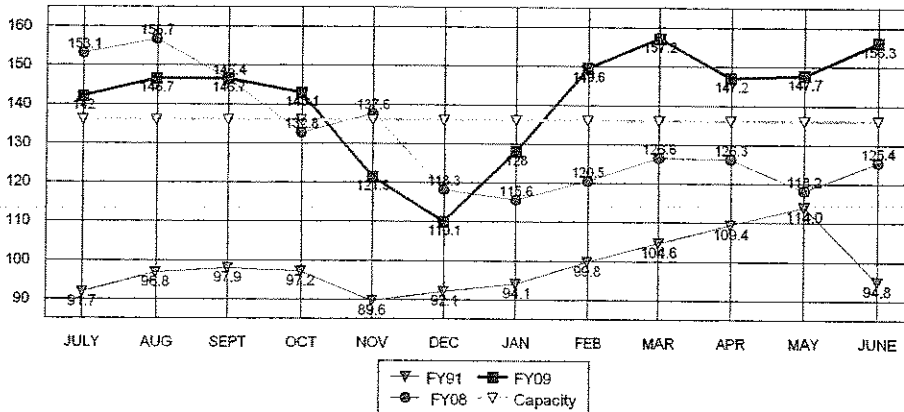


AVERAGES

FY09 TO DATE	331.2
FY08 SAME PERIOD	328.9
FY08 TO YR-END	328.9

0.7%	Change in FY08 to date over same period last year
0.7%	Change in FY08 to date over FY07 average to year-end

**LCF-ONLY POPULATION
 FY91, FY08, FY09**



AVERAGES

FY09 TO DATE	141.3
FY08 SAME PERIOD	131.5
FY08 TO YR-END	131.5

7.5%	Change in FY08 to date over same period last year
7.5%	Change in FY08 to date over FY07 average to year-end

**LANCASTER COUNTY CORRECTIONS DEPARTMENT
MONTHLY STATUS REPORT**

FISCAL YEAR 2008

	2008												TOTAL TO DATE	
	JUL	AUG	SEP	OCT	NOV	DEC	JAN	FEB	MAR	APR	MAY	JUN		AVERAGE TO DATE
INTAKE & DETENTION FACILITY														
Average Daily Population	275.8	303.1	287.8	280.0	262.1	251.7	241.9	242.6	271.2	255.3	251.7	279.0	266.9	N/A
High for Month	298	335	328	308	280	275	263	259	290	276	268	300	290.0	N/A
Low for Month	251	285	263	257	238	233	221	229	245	228	227	298	244.6	N/A
Platte County ADP	45.0	49.8	49.6	48.5	48.0	46.8	39.0	32.9	39.9	44.5	34.4	34.8	42.8	N/A
Butler County ADP	10	10	10	12	15	16	13	12	13	15	14	14	12.7	N/A
York County ADP				3	7	4	5	1	0	0	0	1	2.3	
Total Number of Bookings	984	933	803	801	732	616	770	744	790	769	865	968	814.6	9,775
Felony Arrests	176	183	153	157	140	140	131	141	174	151	182	168	158.0	1,896
Misdemeanor Arrests	604	541	494	481	430	349	510	444	499	511	563	668	507.8	6,094
Felons Sentenced	11	9	4	13	7	6	14	21	10	7	13	16	10.9	131
Misdemeanants Sentenced	127	126	81	99	92	65	59	67	57	41	57	55	77.2	926
Held for Other Jurisdictions	66	74	71	57	63	56	56	71	50	59	50	61	61.2	734
Total Conditionally Released	301	296	274	272	300	222	302	298	323	335	340	403	305.5	3,666
Percent Conditionally Released	30.59%	31.73%	34.12%	33.96%	40.98%	36.04%	39.22%	40.50%	40.89%	43.56%	39.31%	41.63%	37.7%	37.7%
Pre-Arrestment Releases	190	180	184	172	211	151	219	220	237	242	249	260	209.6	2,515
Court Disposition Releases	111	116	90	100	89	71	84	78	86	93	91	143	96.0	1,152
Total of Individuals Lodged	683	637	529	529	432	394	468	446	467	434	525	565	509.1	6,109
LANCASTER CORRECTIONAL FACILITY														
Average Daily Population	153.1	156.7	146.4	132.8	137.6	118.3	115.6	120.5	126.6	126.3	118.2	125.4	131.5	N/A
High for Month	158	158	168	144	150	137	126	132	137	140	130	141	143.4	N/A
Low for Month	143	149	127	124	126	99	103	110	114	109	103	113	118.3	N/A
Estimated Value of Inmate Labor	\$2,704	\$2,524	\$2,843	\$2,338	\$1,808	\$2,153	\$1,864	\$2,230	\$2,220	\$2,245	\$1,797	\$2,838	\$2,297	\$27,562
MEDICAL/MENTAL HEALTH SERVICES														
Referred to Jail Physician	29	45	26	49	30	32	30	27	29	47	26	28	33	398
Referred to Mental Health/LRC	4	7	11	4	3	1	4	0	8	2	2	6	4	52
Transferred to Emergency Room	2	4	5	3	4	0	3	5	6	6	11	8	5	57

APPENDIX 2

**LANCASTER COUNTY CORRECTIONS DEPARTMENT
MONTHLY STATUS REPORT**

FISCAL YEAR 2009

INTAKE & DETENTION FACILITY	2008												2009												TOTAL TO DATE
	JUL	AUG	SEP	OCT	NOV	DEC	JAN	FEB	MAR	APR	MAY	JUN	JUL	AUG	SEP	OCT	NOV	DEC	JAN	FEB	MAR	APR	MAY	JUN	
Average Daily Population	275.5	275.4	297.6	278.0	262.2	274.8	281.6	270.5	280.3	275.9	271.2	266.2													N/A
High for Month	304	300	318	315	281	300	294	294	310	299	294	287													N/A
Low for Month	259	258	277	256	247	257	268	252	248	258	253	248													N/A
Platte County ADP	26.0	26.0	31.4	31.0	27.0	25.0	26.0	25.1	26.0	31.3	28.6	24.6													N/A
Butler County ADP	16	16	16	15	14	16	17	16	19	19	19	16													N/A
York County ADP	8	7	5	6	5	2	4	3	3	4	3	4													N/A
Total Number of Bookings	1073	1097	1034	956	870	809	911	849	936	825	981	798													11,139
Felony Arrests	174	173	175	165	143	158	167	142	159	152	165	146													1,919
Misdemeanor Arrests	777	790	752	687	615	542	615	584	633	568	646	524													7,733
Felons Sentenced	10	11	11	14	11	18	15	11	11	13	23	25													173
Misdemeanants Sentenced	54	57	44	35	54	45	58	60	74	38	82	57													658
Held for Other Jurisdictions	99	59	52	55	47	46	56	52	59	54	65	46													690
Total Conditionally Released	413	432	377	395	364	294	324	337	318	267	368	246													4,135
Percent Conditionally Released	38.49%	39.63%	36.46%	41.32%	41.84%	36.34%	35.57%	39.69%	33.97%	32.36%	37.51%	30.83%													37.0%
Pre-Arrestment Releases	241	247	232	227	210	165	184	186	177	173	210	152													2,404
Court Disposition Releases	172	185	145	168	154	129	140	151	141	94	158	94													1,731
Total of Individuals Lodged	669	658	657	561	506	515	587	512	618	558	613	552													7,006
LANCASTER CORRECTIONAL FACILITY																									
Average Daily Population	142.0	146.7	146.7	143.1	121.5	110.1	128.0	149.6	157.2	147.2	147.7	156.3													N/A
High for Month	151	158	159	163	131	124	149	156	162	160	160	165													N/A
Low for Month	129	140	134	111	107	95	106	142	149	138	138	148													N/A
Estimated Value of Inmate Labor	\$3,910	\$3,419	\$2,862	\$2,934	\$2,627	\$3,406	\$2,666	\$2,417	\$3,884	\$4,284	\$6,308	\$5,188													\$43,905
MEDICAL/MENTAL HEALTH SERVICES																									
Referred to Jail Physician	36	51	42	46	19	33	35	26	50	54	40	29													461
Referred to Mental Health/LRC	1	2	4	7	3	3	2	1	0	3	4	4													34
Transferred to Emergency Room	6	6	12	7	4	2	10	8	6	7	6	4													78

LCF COMMUNITY SERVICE PROGRAM
COUNTY ROAD LITTER PICK-UP
June 2009

NUMBER OF COUNTY ROAD CLEAN-UP TRIPS: 14

TOTAL INMATE HOURS WORKED: 286

TOTAL STAFF HOURS WORKED: 93.5

ROAD DISTANCE CLEARED OF LITTER: 104 miles (both sides of road)

BAGS OF LITTER REMOVED: 119