

LANCASTER COUNTY CORRECTIONS DEPARTMENT

605 SOUTH TENTH STREET
LINCOLN, NE 68508
(402) 441-7530
FAX: 441-8946

MICHAEL THURBER, DIRECTOR

RECEIVED

MAY 21 2009

LANC. COUNTY CLERK

LANCASTER COUNTY CORRECTIONS BOARD

-AGENDA-

May 21, 2009
Thursday @ 9:00

LANCASTER COUNTY CORRECTIONS BOARD

- AGENDA -

**Thursday, May 21, 2009
9:00 a.m.**

- I. Approval of the February 19, 2009 Meeting**

- II. Population Statistics**
 - A. Population Comments
 - B. Population Graphs-Appendix 1
 - C. Fiscal Year 2008 Monthly Statistical Report-Appendix 2
 - D. Fiscal Year 2009 Monthly Statistical Report-Appendix 3

- III. Department Activities**
 - A. Training
 - B. Mental Health Jail Diversion Project
 - C. Out of County Housing
 - D. LCF/Work Crew Activities
 - E. Programs Division

- IV. New Business/Transition Activities**

- V. Adjournment**

Attachments.

- 1- February 19, 2009 Minutes
- 2- Population Graphs
- 3- Monthly Status Reports

Lancaster County Corrections Board

Meeting of Thursday, May 21, 2009

I. APPROVAL OF MINUTES- Feb. 19, 2009

II. POPULATION STATISTICS	2008	2009	Change
	Jan.-Mar.	Jan.-Mar.	
Average Daily Population	424.4	468.7	+ 10.4 %
JAIL/ Platte/Butler	303.5	323.8	+ 6.7 %
LCF	120.9	144.9	+ 19.9 %
Total Bookings	2,304.0	2,696.0	+ 17.0 %
Average per month	768.0	898.7	
Total Lodgings	1,381.0	1,717.0	+ 24.3 %
Average per month	460.3	572.3	
Platte County Inmate Housing (Sept. 05)			
Average per month	37.4	25.7	- 31.2 %
Butler County Inmate Housing (May 07)			
Average per month	12.4	17.3	+ 39.5 %
York County Inmate Housing (Oct. 07)			
Average per month	1.8	3.3	+ 76.8 %

A. Population Comments

Population numbers for the first quarter 2008 compared to the first quarter 2009, show a 10% increase in our average daily population. The sharpest increase during this quarter was at our work release facility in Airpark, showing an increase of 24 inmates. Bookings were also higher by 24% during this quarter, with an average of 572 persons booked per month.

For budgetary reasons, we have attempted to cap the total of out of county inmates to 45-50 individuals per day. This will allow us the ability to increase our out of county holds for the remaining of this fiscal year, avoiding over expending of our budget. We continue to work on a housing contract with Hall County. This will be helpful in late summer when populations tend to increase. Saunders County officials have expressed interest in housing our inmates. As they finalize their "punch list" on their new facility, we will be taking a tour and speaking with them about a possible contract.

B. Population Graph (see attached) Appendix 1

The population graph shows the month to month populations for FY08 and FY09. This graph shows the facility's rated capacity as of 1991 when the Adult Detention Facility opened.

C. Monthly Statistical Report (see attached) Appendix 2 & 3, FY08 & FY09

This is a statistical report giving the average daily population for both facilities, number of bookings, types of arrests and releases, as well as medical and mental health services provided.

III. DEPARTMENT ACTIVITIES

A. TRAINING

During this quarter, the training division handled approximately 469 applications for Correctional Officer positions. Orientation training was provided for nine new officers. (2-on call, 7 full time) One on call officer moved to a full time position.

Re-orientation was also conducted for two officers who had been off work for an extended period, one on military deployment and the other on maternity leave.

Six full time officers completed the twelve week Field Training Officer Program, designed to help in the training of new officers during their first three months of employment. Twelve other officers are currently enrolled in the program.

An In-Service Program was conducted regarding CPR, AED and First Aid training. These classes were also attended by the support staff.

Training was conducted for two probation officers so that they may enter the facility to conduct inmate interviews.

Three Lieutenants attended a two day re-certification course on PPCT defense tactics.

B. MENTAL HEALTH JAIL DIVERSION PROJECT

The Mental Health Jail Diversion Project has accepted ten new individuals, successfully closed three cases and terminated four. Initial screenings were completed on 58 people during this quarter. Destenie Commuso was added to our team as a Recovery Specialist in December. She is a Jail Diversion and Drug Court success story and has really become a valuable member of the team. She helps cover appointments, transports clients to AA/NA meetings, has been completing WRAP (Wellness Recovery in Action Program), training individuals stepping down to a lower level of supervision and has a caseload of individuals waiting to transfer to lower levels of supervision with programs at CMHC and CenterPointe. She is also co-facilitating a Peer to Peer Program, a 15 week group for peers.

The Diversion Project has seen more opportunity for individuals to get into treatment faster at Cornhusker Place and more willingness to take some of our individuals, where their diagnosis of mental illness had been a barrier before. The project is also excited about the new housing option with CenterPointe and hopes this will open more doors to get people in to more stable housing.

C. OUT OF COUNTY HOUSING

Lancaster County continues to house inmates in Platte, Butler and York counties due to overcrowding. During the months of January, February and March, 2009, we maintained an average population of 25.7 inmates in Platte County. During this same time period, 18 round trips were made moving 126 inmates between the two facilities.

Butler County's average population for this time period was 17.3. Nineteen inmates were moved between the two facilities.

York County's average population for this period was 3.3. Eight inmates were moved between the two facilities.

In addition, the transport division transported 3,100 inmates to court, medical appointments or other locations. This required approximately 1,327 staff hours to complete.

D. LCF/WORK CREW ACTIVITIES

In January 2009, work crews assisted the Health Department with furniture moves. They spent approximately twelve days painting and dry walling the kitchen at the Intake & Detention Facility. During that time, they also remodeled the bathroom area and put up additional stainless steel panels on the walls in the delivery cart and freezer areas at the west end of the kitchen. The rest of the month, crews spent time painting and doing routine maintenance at our airpark facility.

Crews spent an additional four days in February at the Intake & Detention Facility's kitchen on the remodeling project. Additional projects during February included pulling new wires to add two new antennas for the digital conversion.

During the month of March, crews spent time working on the antenna in the Recreation 3 area. They also picked scrap metal at IDF for disposal, along with other miscellaneous items. The rest of the month was spent doing preventative maintenance on the air handlers for the cooling system.

E. PROGRAMS DIVISION

The Correctional Specialists coordinated an average of 26 evaluations per month with the consulting psychiatrist in the months of January, February, and March 2009, and an average of 1 inmate per month was placed into Emergency Protective Custody and transferred with a jail hold to the Crisis Center or Lincoln Regional Center, due to meeting the criteria of mental illness and dangerousness to self or others. Correctional Specialists had an average of 519 contacts with inmates each month during this quarter, in which mental health, personal problems, or coping with confinement concerns were addressed.

In addition to attending to the mental health needs of inmates, and providing support and assistance in coping with confinement, Correctional Specialists and the Chaplain coordinated an average of 169 educational, self-help, and religious programs per month during this time period. This number represents programs offered at both the downtown Intake & Detention Facility and the Airpark Lancaster Correctional Facility.

The Work Release Coordinator reviewed an average of 149 court ordered release applications per month in January, February, and March 2009. This number reflects both District and County Court applications. The average number of individuals on work release in these months was 32.

In March, Corrections Director Mike Thurber and Programs Director Brenda Fisher participated in a work group consisting of Health & Human Services personnel, correctional staff from various jurisdictions, and Crime Commission/Jail Standards staff. The purpose of the group was to present to the University of Nebraska Public Policy Center a proposed standardized screening instrument to assist county jails across Nebraska to identify inmates with mental health concerns.

IV. NEW BUSINESS/TRANSITION ACTIVITIES

A. Design Review

During the 3rd quarter of FY09, the department continued to review and fine tune the designs for the new Intake and Detention Facility. This involved coordinating meetings with Clark Enersen Partners, Carlson/West/Pavondra Architects and Erickson Sullivan Architects.

The special needs area received significant discussion between corrections staff, Clark Enersen Partners and PSA-Dewberry. Dr. Hartmann was consulted regarding this unit's design and his input was considered in the current configuration. Programs staff and the Transition Coordinator attended training regarding potential mental health programming models.

Carlson/West/Pavondra presented their proposal for floor coverings, booking counter and inmate furnishings. Corrections staff reviewed and researched the differing alternative for each of these areas. Several samples were obtained for hands-on evaluation and inspection.

Representatives from Information Services and correctional staff reviewed data and co-axial cabling needs as well as their receptacle locations.

B. Millwork

Clark Enersen and PSA-Dewberry presented drawings that detailed millwork throughout the facility. These drawings were reviewed by affected staff and appropriate changes were made.

C. Video Arraignment

We conducted several meetings with Latta Technical Services concerning design of the video arraignment and visitation equipment. A survey pertaining to their needs or concerns was developed and forwarded to the County and District Court judges. A committee of correctional staff was formed and participated in a County Court judge's meeting to initiate discussion. Follow up meetings were held with the District and County Judges. Latta Technical Services, Clark Enersen, representatives from the Sheriff's Office, Public Defender, County Attorney and Clerk of the County Court. Brad Johnson and two correctional staff members toured Hall County's facility and observed a video arraignment session at their facility as well as the court room side.

D. Storage/Mail Room Design

A review of Midwest Storage Solution's proposal for storage systems was conducted in meetings

and e-mail communications. Property bag and inmate tub samples have been received and examined. Mail delivery processes were discussed with appropriate staff and mail room design was explored. Necessary equipment was identified and room configuration was completed.

E. Booking Processes

A booking committee was created consisting of several officers, a lieutenant, Terry Weber, Kent Griffith and Brad Johnson. Members of this committee have met several times to begin establishing the processes that will be used in the pre-booking area as designed. A scaled floor plan was taped off at the Clark Enersen studio for future intake process simulations. Flow charts are being created to encompass each step of the intake process which, when finalized, will assist in development of policy and post orders.

The taped off floor plan for the pre-booking area was shared with representatives from LPD and LSO for feedback. These meetings were successful with a positive flow of information, which enhanced understanding and future expectations from the corrections and law enforcement perspectives.

F. Radio Alternatives

We met with Julie Righter of Emergency Communications and representatives of the radio shop to discuss the potential of joining the city/county radio communication's system. Research was also conducted regarding the option of maintaining our own system. These alternatives were discussed and the pro's and con's evaluated.

Over all, this three month period has been spent reviewing and detailing facility and equipment design. The function of discussing and establishing the different processes that will be used to operate this facility has begun to ramp up and is expected to increase dramatically as the year progresses.

**MINUTES
BOARD OF CORRECTIONS
QUARTERLY MEETING
COUNTY-CITY BUILDING, ROOM 113
THURSDAY, FEBRUARY 19, 2009
9:00 A.M.**

Board Members Present: Bernie Heier, Chair
Bob Workman, Vice Chair
Larry Hudkins
Ray Stevens
Deb Schorr

Others Present: Mike Thurber, Corrections Director
Terry Weber, Facility Administrator, Corrections
Department
Kerry Eagan, Chief Administrative Officer
Gwen Thorpe, Deputy Chief Administrative Officer
Dan Nolte, County Clerk
Ann Taylor, County Clerk's Office

The Chair opened the meeting at 9:04 a.m.

AGENDA ITEM

**1 APPROVAL OF BOARD OF CORRECTIONS MINUTES OF
THURSDAY, NOVEMBER 13, 2008**

MOTION: Stevens moved and Workman seconded approval of the Board of Corrections Meeting minutes dated November 13, 2008. Hudkins, Schorr, Stevens, Workman and Heier voted aye. Motion carried.

2 POPULATION STATISTICS

A. Population Comments

Mike Thurber, Corrections Director, reported a 3.8 decrease in the average daily population the final quarter of 2008, compared to 2007. He said there has been a 22% increase in bookings and a 16% increase in monthly lodgings for the same period. Out-of-county holds have decreased 42%. Platte County has capped housing at 27 individuals, per day. Thurber said the department is currently in negotiations with Hall County and is looking at Saunders County's new facility, as well.

B. Population Graphs

See agenda packet.

C. Monthly Statistical Report

See agenda packet.

3 DEPARTMENT ACTIVITIES

A. Training

Thurber said in-service training was conducted for all uniform staff on procedures for passing medications.

B. Mental Health Jail Diversion Program

Thurber said the Mental Health Jail Diversion Program is currently serving 41 individuals. He said 17 individuals were accepted this quarter, 6 were terminated and 3 cases were successfully closed.

C. Out-of-County Housing

Thurber said the department continues to house inmates in Butler, Platte and York Counties, due to overcrowding. He said Platte County housed an average population of 27.7 this quarter. Butler County's average this quarter was 15.0 and York County's average for the same period was 4.3.

D. Lancaster Correctional Facility (LCF)/Work Crew Projects

Thurber said work crew projects include miscellaneous facility and lawn care at the Lancaster Correctional Facility (LCF), repair work in the Intake & Detention Facility (IDF) kitchen area, assisting the Election Commissioner during the November election and moving furniture for the Health Department and County Extension Office.

In response to a question from Schorr, Thurber said work crews are also assisting the Lincoln City Libraries by moving book collections.

E. Programs Division

Thurber said an average of 4 inmates were placed into Emergency Protective Custody (EPC) per month and moved to the Crisis Center or Lincoln Regional Center (LRC).

Thurber said Good News Jail and Prison Ministries has ceased travel, due to financial issues, and reduced the chaplain's salary.

4 NEW BUSINESS

Brad Johnson, Transition Coordinator, appeared and discussed the jail design/planning. He said he has presented information on the proposed design to correctional staff and solicited their suggestions and comments.

5 OTHER BUSINESS

A. Introduction of Brian Hansen, Correctional Officer

Thurber introduced Brian Hansen, a Correctional Officer who recently returned from a tour of duty in Iraq.

Hansen thanked the Corrections Department for their support during his tour of duty and presented them with an American flag that was flown in Camp Bucca, Iraq on September 11, 2008.

Board consensus was to schedule a special presentation at a regular County Board of Commissioners Meeting.

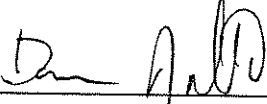
B. Correctional Specialist I Position

Thurber requested authorization to hire an additional Correctional Specialist I in the Program Division. He estimated the cost at \$52,000 a year, including benefits.

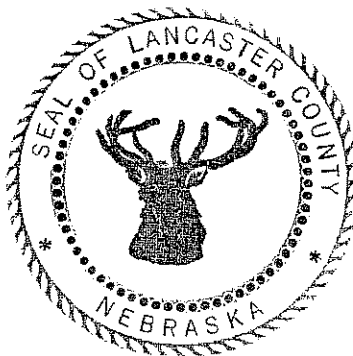
MOTION: Workman moved and Hudkins seconded to approve the Correctional Specialist I position out of the Corrections Department budget, with the understanding that it may be necessary to supplement the budget at the end of the fiscal year. Hudkins, Workman, Schorr, Heier and Stevens voted aye. Motion carried.

6 ADJOURNMENT

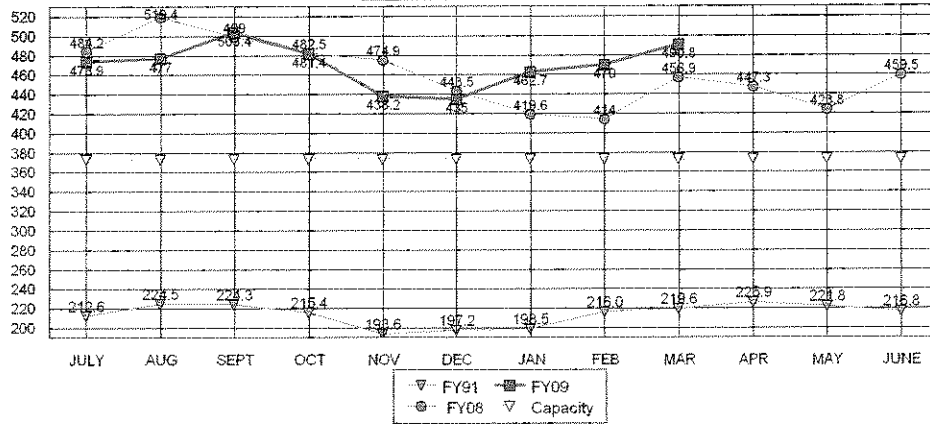
MOTION: Schorr moved and Hudkins seconded to adjourn the meeting at 9:45 a.m. Hudkins, Stevens, Schorr, Heier and Workman voted aye. Motion carried



Dan Nolte
Lancaster County Clerk



**TOTAL POPULATIONS
 FY91, FY08, FY09**

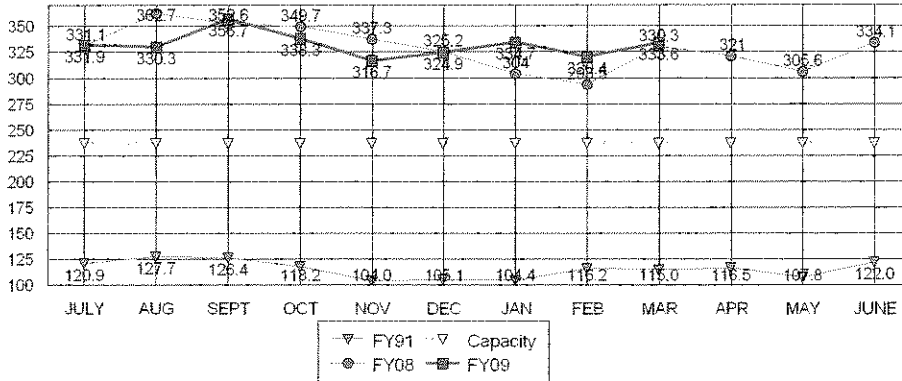


AVERAGES

FY09 TO DATE	470.3
FY08 SAME PERIOD	466.0
FY08 TO YR-END	460.4

0.9%	Change in FY08 to date over same period last year
2.1%	Change in FY08 to date over FY07 average to year-end

**JAIL-OFF SITE CO. POPULATION
 FY91, FY08, FY09**

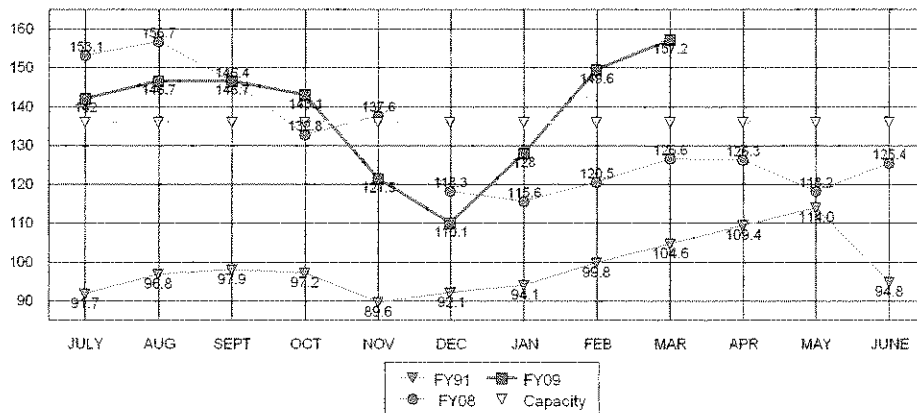


AVERAGES

FY09 TO DATE	331.9
FY08 SAME PERIOD	331.8
FY08 TO YR-END	328.9

0.0%	Change in FY08 to date over same period last year
0.9%	Change in FY08 to date over FY07 average to year-end

**LCF-ONLY POPULATION
 FY91, FY08, FY09**



AVERAGES

FY09 TO DATE	138.3
FY08 SAME PERIOD	134.2
FY08 TO YR-END	131.5

3.1%	Change in FY08 to date over same period last year
5.2%	Change in FY08 to date over FY07 average to year-end

**LANCASTER COUNTY CORRECTIONS DEPARTMENT
MONTHLY STATUS REPORT**

FISCAL YEAR 2008	2007												2008												TOTAL TO DATE
	JUL	AUG	SEP	OCT	NOV	DEC	JAN	FEB	MAR	APR	MAY	JUN	JUL	AUG	SEP	OCT	NOV	DEC	JAN	FEB	MAR	APR	MAY	JUN	
INTAKE & DETENTION FACILITY																									
Average Daily Population	275.8	303.1	287.8	280.0	262.1	251.7	241.9	242.6	271.2	255.3	251.7	279.0	275.8	303.1	287.8	280.0	262.1	251.7	241.9	242.6	271.2	255.3	251.7	279.0	266.9
High for Month	298	335	328	308	280	275	263	259	290	276	268	300	298	335	328	308	280	275	263	259	290	276	268	300	290.0
Low for Month	251	285	263	257	238	233	221	229	245	228	227	258	251	285	263	257	238	233	221	229	245	228	227	258	244.6
Platte County ADP	45.0	49.8	49.6	48.5	48.0	46.8	39.0	32.9	39.9	44.5	34.4	34.8	45.0	49.8	49.6	48.5	48.0	46.8	39.0	32.9	39.9	44.5	34.4	34.8	42.8
Butler County ADP	10	10	10	12	15	16	13	12	13	15	14	14	10	10	10	12	15	16	13	12	13	15	14	14	12.7
York County ADP				3	7	4	5	1	0	0	0	1				3	7	4	5	1	0	0	0	1	2.3
Total Number of Bookings	984	933	803	801	732	616	770	744	790	769	865	968	984	933	803	801	732	616	770	744	790	769	865	968	814.6
Felony Arrests	176	183	153	157	140	140	131	141	174	151	182	168	176	183	153	157	140	140	131	141	174	151	182	168	158.0
Misdemeanor Arrests	604	541	494	481	430	349	510	444	499	511	563	668	604	541	494	481	430	349	510	444	499	511	563	668	507.8
Felons Sentenced	11	9	4	13	7	6	14	21	10	7	13	16	11	9	4	13	7	6	14	21	10	7	13	16	10.9
Misdemeanants Sentenced	127	126	81	99	92	65	59	67	57	41	57	55	127	126	81	99	92	65	59	67	57	41	57	55	77.2
Held for Other Jurisdictions	66	74	71	57	63	56	56	71	50	59	50	61	66	74	71	57	63	56	56	71	50	59	50	61	61.2
Total Conditionally Released	301	296	274	272	300	222	302	298	323	335	340	403	301	296	274	272	300	222	302	298	323	335	340	403	305.5
Percent Conditionally Released	30.59%	31.73%	34.12%	33.96%	40.98%	36.04%	39.22%	40.50%	40.89%	43.56%	39.31%	41.63%	30.59%	31.73%	34.12%	33.96%	40.98%	36.04%	39.22%	40.50%	40.89%	43.56%	39.31%	41.63%	37.7%
Pre-Arrestment Releases	190	180	184	172	211	151	219	220	237	242	249	260	190	180	184	172	211	151	219	220	237	242	249	260	209.6
Court Disposition Releases	111	116	90	100	89	71	84	78	86	93	91	143	111	116	90	100	89	71	84	78	86	93	91	143	96.0
Total of Individuals Lodged	683	637	529	529	432	394	468	446	467	434	525	565	683	637	529	529	432	394	468	446	467	434	525	565	509.1
6,109																									
LANCASTER CORRECTIONAL FACILITY																									
Average Daily Population	153.1	156.7	146.4	132.8	137.6	118.3	115.6	120.5	126.6	126.3	118.2	125.4	153.1	156.7	146.4	132.8	137.6	118.3	115.6	120.5	126.6	126.3	118.2	125.4	131.5
High for Month	158	158	168	144	150	137	126	132	137	140	130	141	158	158	168	144	150	137	126	132	137	140	130	141	143.4
Low for Month	143	149	127	124	126	99	103	110	114	109	103	113	143	149	127	124	126	99	103	110	114	109	103	113	118.3
Estimated Value of Inmate Labor	\$2,704	\$2,524	\$2,843	\$2,338	\$1,808	\$2,153	\$1,864	\$2,230	\$2,220	\$2,245	\$1,797	\$2,838	\$2,704	\$2,524	\$2,843	\$2,338	\$1,808	\$2,153	\$1,864	\$2,230	\$2,220	\$2,245	\$1,797	\$2,838	\$2,297
\$27,562																									
MEDICAL/MENTAL HEALTH SERVICES																									
Referred to Jail Physician	29	45	26	49	30	32	30	27	29	47	26	28	29	45	26	49	30	32	30	27	29	47	26	28	33
Referred to Mental Health/LRC	4	7	11	4	3	1	4	0	8	2	2	6	4	7	11	4	3	1	4	0	8	2	2	6	4
Transferred to Emergency Room	2	4	5	3	4	0	3	5	6	6	11	8	2	4	5	3	4	0	3	5	6	6	11	8	5

**LANCASTER COUNTY CORRECTIONS DEPARTMENT
MONTHLY STATUS REPORT**

FISCAL YEAR 2009

	2009												TOTAL TO DATE		
	JUL	AUG	SEP	OCT	NOV	DEC	JAN	FEB	MAR						
INTAKE & DETENTION FACILITY															
Average Daily Population	275.5	275.4	297.6	278.0	262.2	274.8	281.6	270.5	280.3					277.2	N/A
High for Month	304	300	318	315	281	300	294	294	310					301.5	N/A
Low for Month	259	258	277	256	247	257	268	252	248					258.0	N/A
Platte County ADP	26.0	26.0	31.4	31.0	27.0	25.0	26.0	25.1	26.0					27.5	N/A
Butler County ADP	16	16	16	15	14	16	17	16	19					16.4	N/A
York County ADP	8	7	5	6	5	2	4	3	3					4.6	
Total Number of Bookings	1073	1097	1034	956	870	809	911	849	936					936.0	9,360
Felony Arrests	174	173	175	165	143	158	167	142	159					160.8	1,608
Misdemeanor Arrests	777	790	752	687	615	542	615	584	633					656.3	6,563
Felons Sentenced	10	11	11	14	11	18	15	11	11					12.5	125
Misdemeanants Sentenced	54	57	44	35	54	45	58	60	74					51.9	519
Held for Other Jurisdictions	99	59	52	55	47	46	56	52	59					57.9	579
Total Conditionally Released	413	432	377	395	364	294	324	337	318					352.1	3,521
Percent Conditionally Released	38.49%	39.63%	36.46%	41.32%	41.84%	36.34%	35.57%	39.69%	33.97%					37.6%	37.6%
Pre-Arrestment Releases	241	247	232	227	210	165	184	186	177					204.2	2,042
Court Disposition Releases	172	185	145	168	154	129	140	151	141					147.9	1,479
Total of Individuals Lodged	669	658	657	561	506	515	587	512	618					584.1	5,841
LANCASTER CORRECTIONAL FACILITY															
Average Daily Population	142.0	146.7	146.7	143.1	121.5	110.1	128.0	149.6	157.2					139.2	N/A
High for Month	151	158	159	163	131	124	149	156	162					151.3	N/A
Low for Month	129	140	134	111	107	95	106	142	149					125.1	N/A
Estimated Value of Inmate Labor	\$3,910	\$3,419	\$2,862	\$2,934	\$2,627	\$3,406	\$2,666	\$2,417	\$3,884					\$3,241	\$32,409
MEDICAL/MENTAL HEALTH SERVICES															
Referred to Jail Physician	36	51	42	46	19	33	35	26	50					39	392
Referred to Mental Health/LRC	1	2	4	7	3	3	2	1	0					3	26
Transferred to Emergency Room	6	6	12	7	4	2	10	8	6					7	68