

LANCASTER COUNTY CORRECTIONS DEPARTMENT

605 SOUTH TENTH STREET
LINCOLN, NE 68508
(402) 441-7530
FAX: 441-8946

MICHAEL THURBER, DIRECTOR

LANCASTER COUNTY CORRECTIONS BOARD

-AGENDA-

May 15, 2008
Thursday @ 9:30

LANCASTER COUNTY CORRECTIONS BOARD

- AGENDA -

**Thursday, May 15, 2008
9:30 a.m.**

I. Approval of the February 14, 2008 Meeting

II. Population Statistics

- A. Population Comments
- B. Population Graphs-Appendix 1
- C. Monthly Statistical Report-Appendix 2 & 3

III. Department Activities

- A. Training
- B. Mental Health Jail Diversion Project
- C. Out of County Housing
- D. LCF/Work Crew Activities
- E. Programs Division

IV. New Business

- A. Introduction of Transition Coordinator, Brad Johnson
- B. Nebraska Jail Standards

V. Adjournment

Attachments.

- 1 - Feb. 14, 2008 Minutes
- 2 - Population Graphs
- 3- Monthly Status Reports

Lancaster County Corrections Board
Meeting of Thursday, May 15, 2008

I. APPROVAL OF MINUTES- Feb. 14, 2008

II. POPULATION STATISTICS	<u>2007</u>	<u>2008</u>	Change
	Jan.-Mar.	Jan.-Mar.	
Average Daily Population	441.2	424.4	- 3.8 %
JAIL/ Platte/Butler	302.8	303.5	+ .2 %
LCF	138.4	120.9	- 12.6 %
Total Bookings	2,726.0	2,304.0	- 15.5 %
Average per month	908.7	768.0	
Total Lodgings	1,756.0	1,381.0	- 21.4 %
Average per month	585.3	460.3	
Platte County Inmate Housing			
Average per month	35.8	37.4	+ 4.5 %
-Beginning Sept. 05			
Butler County Inmate Housing		12.4	
Average per month			
-Beginning May 07			
York County Inmate Housing		1.9	
Average per month			
-Beginning Oct. 07			

A. Population Comments

Comparing the first quarter populations of 2007/2008 , the department has seen a 3.8% decrease in average daily population. January through March, 2008, the average daily population at the jail has remained steady as compared to last year's first quarter. The decrease in population has been experienced at Airpark over this first quarter. Population has decreased by 12.6% over the same period last year. Our Airpark Facility is primarily comprised of our sentenced individuals. This reduction equates to approximately 18 persons per day.

With the decrease in lodgings, the department will follow this trend in the upcoming months. If the department maintains the 460-500 per month offender lodging, we may experience a lower summer population increase.

B. Population Graph (see attached) Appendix 1

The population graph shows the month to month populations for FY07 and FY08. This graph shows the facility's rated capacity as of 1991 when the Adult Detention Facility opened.

C. Monthly Statistical Report (see attached) Appendix 2 & 3, CY07-CY08

This is a statistical report giving the average daily population for both facilities, number of bookings, types of arrests and releases, as well as medical and mental health services provided.

III. DEPARTMENT ACTIVITIES

A. TRAINING

In the period from January-March, 2008, the training division conducted approximately 180 interviews with potential Correctional Officer candidates, as well as a handful of interviews for a nurse.

Orientation training was provided for five new officers, two on-calls and three full time. We also provided orientation training to six Community Corrections staff so that may come into the facility to conduct interviews.

Five full time officers completed the twelve week Field Training Officer Program, designed to help in the training of new officers in their first three months on the job. Three other officers are currently enrolled in the program.

An in-service training session on CPR was conducted for most of the department during the month of February.

B. MENTAL HEALTH JAIL DIVERSION PROJECT

The Jail Diversion Project has been running at capacity of 30, with 31 currently active. They have requested another case manager position and are also looking at adding a part time peer specialist who would take transitioning clients. This means the client's legal issues are resolved and are waiting on long term services such as CMHC or CenterPointe case management.

Data was submitted in a article to American Jails Magazine. Part I of the article was published in the January/February issue and Part II was published in the March/April issue.

The Mental Health Diversion Project has had some recent success in getting some clients into treatment sooner rather than trying to manage them in the community for 4-6 months pending openings. The individuals that have gotten in earlier have successfully completed the program and are doing well in half way houses and maintaining jobs. They have also seen an increase in their clients getting and maintaining jobs within the community. Staff is doing a great job of setting high expectations and helping the clients with resources such as Vocational Rehab, Goodwill, and other employment sources.

C. OUT OF COUNTY HOUSING

Lancaster County continues to house inmates in Platte and Butler counties. Between the months of January-March, 2008, we maintained an average population of 37 inmates in Platte County. During this same time period, 26 round trip transports were conducted, moving 180 inmates between the two facilities.

Butler County's average population for this same time period was 12. We moved 44 inmates between the two facilities.

York County housed inmates during January and February, 2008. The average population for this time period was 2. We moved 22 inmates between the two facilities.

Moving inmates between these three facilities consumed 197.5 staffing hours this quarter. In addition to these duties, the transport division transported 3,113 inmates to court, doctor's appointments or other locations. This required approximately 1,652 staff hours to complete.

D. LCF/WORK CREW ACTIVITIES

The Community Service Crew will begin county road clean up on May 20. On-call officer, Andrea Hobbs, has made the commitment to supervise this year's summer crew. Approximately \$4,000 is available from the Health Department for this year's mini-grant.

Sgt. Steve Engstrom has taken on the task of evaluating and making recommendations for inmates who wish to apply for house arrest part way through their sentence. His recommendations are forwarded to Community Corrections staff supervising this program. His recommendations are based on an inmate's criminal history, behavior during current and past incarcerations, current charges and classification status. Sgt. Engstrom has about 45 queries from inmates or their attorney per week regarding the program. Between October 2007 and April 2008, 12 applicants have been accepted into the program, 13 have been denied and 6 are pending.

In January, work crews moved items from the Health Department to the Election Commissioners. The rest of the month was spent repairing and spraying new texture on LCF restroom ceilings.

In February, they spent 3-4 days moving the Public Defender's office to their new location. Other work completed was painting the restrooms at LCF and other routine maintenance items at both locations.

During the month of March, crews moved office furniture for Community Corrections to their new location.

E. PROGRAMS DIVISION

The Correctional Specialists coordinated an average of 31 evaluations per month with the consulting psychiatrist in the months of January, February and March, 2008. An average of 4 inmates per month were placed into Emergency Protective Custody and transferred with a jail hold to the Crisis Center or Lincoln Regional Center due to meeting the criteria of mental illness or dangerousness to oneself or others. Correctional Specialists had an average of 407 contacts with inmates each month this quarter, in which mental health, personal problems, or coping with confinement concerns were addressed.

In addition to attending to the mental health needs of inmates and providing support and assistance in coping with confinement, Correctional Specialists and the Chaplain coordinated an average of 167 educational, self-help and religious programs per month during this time period. This number represents programs offered at the downtown Intake & Detention Facility and at the Lancaster Correctional Facility in Airpark.

The Work Release Coordinator reviewed an average of 150 court ordered release applications per month from January-March, 2008. This number reflects both District and County Court applications. The average number of individuals on work release in these months was 34.

In March, 2008, programs staff worked to extend invitations to program and service providers in the community to attend the second Jail Planning Workshop. The response was positive and a large number of providers representing agencies in seven major topic areas were present to participate in break out discussion groups regarding how to deliver and/or expand and enhance existing programs to a larger inmate population as we look toward constructing a large detention facility.

The Intake & Detention Facility continues to experience a demand for professional contact visitation. An average of 16 professional contact visits per month were scheduled for inmates during this past quarter.

IV. NEW BUSINESS

- A. I would like to introduce Brad Johnson as the department's newly appointed Transition Coordinator. Brad has been with the department since 1992 and has served as a Lieutenant with the department for the past 11 years. His work in special projects and population management will serve the department well as we need to create new policies and procedures as well as assisting staff in transitioning to a fully functional direct supervision jail.
- B. Jail Standards, Chapter 15.004, requires the Board of County Commissioners to present a Letter of Intent to design an Adult Detention Facility. At your direction, I can prepare a letter for the Chair to sign.

**MINUTES
BOARD OF CORRECTIONS
QUARTERLY MEETING
COUNTY-CITY BUILDING, ROOM 113
THURSDAY, FEBRUARY 14, 2008
9:00 A.M.**

Board Members Present: Bernie Heier, Chair
Larry Hudkins
Ray Stevens
Deb Schorr

Board Members Absent: Bob Workman, Vice Chair

Others Present: Kerry Eagan, Chief Administrative Officer
Gwen Thorpe, Deputy Chief Administrative Officer
Dan Nolte, County Clerk
Cori Beattie, Deputy County Clerk
Ann Taylor, County Clerk's Office

The Chair opened the meeting at 9:00 a.m.

AGENDA ITEM

1 APPROVAL OF BOARD OF CORRECTIONS MINUTES OF THURSDAY, OCTOBER 25, 2007

MOTION: Hudkins moved and Stevens seconded approval of the Board of Corrections Meeting minutes dated October 25, 2007. Hudkins, Schorr, Stevens and Heier voted aye. Motion carried.

2 POPULATION STATISTICS

A. Population Comments

Mike Thurber, Corrections Director, reported an increase of approximately 9% in the daily population for the final quarter of 2007, primarily in the downtown facility. He said there was a decrease in total lodgings compared to the same quarter in 2007.

B. Population Graphs

See agenda packet.

C. Monthly Statistical Report

See agenda packet.

3 DEPARTMENT ACTIVITIES

A. Training

Thurber said there was orientation training for six new officers, a chaplain and a probation officer.

Thurber also reported on participation in County Government Career Day (students learned about career opportunities in Corrections).

B. Mental Health Jail Diversion Project

Thurber said participation in the Mental Health Jail Diversion Project averages around 33 individuals. A total of 165 individuals have been diverted since the onset of the program. He said an article about the program was published in the February issue of *American Jails* magazine.

C. Out of County Housing

Thurber said inmates continue to be housed in Platte and Butler County facilities, due to overcrowding. Lancaster County has also entered into a contract with York County to house additional inmates.

D. Lancaster Correctional Facility (LCF)/Work Crew Projects

Thurber reported on work and road crew projects (see agenda packet).

Heier noted he has requested a legal opinion on whether the County can require inmates to work.

E. Programs Division

Thurber said Corrections took over collection of the department's work release costs from County Court, effective December 1, 2007.

Hudkins asked whether it would be viable to have inmates assist the Capitol Humane Society with kenneling and animal care.

Thurber said those type of programs generally take place in prisons because inmates are there for longer terms.

4 NEW BUSINESS

A. Architectural Design Workshop

Thurber said the first Architectural Design Workshop took place February 11th through 13th. He noted there was a recommendation that the Board tour adult correctional facilities in Orange County, Florida and Hampton County, Massachusetts.

MOTION: Schorr moved and Heier seconded to travel to Hampton County, Massachusetts on Tuesday, March 18th, visit the Hampton County Adult Correctional Facility on Wednesday, March 19th, travel to Orange County, Florida later in the day on the 19th, visit the Orange County Adult Correctional Facility on Thursday, March 20th and return to Lincoln later in the day on the 20th.

Hudkins said he would also like to tour a facility in Tampa, Florida.

Thurber said the Board could tour the facility on Friday, March 21st but would be unable to get a flight back to Lincoln until Saturday, March 22nd.

Schorr questioned whether the additional cost is justified.

Heier said he might stay at his own expense to see it.

Thurber said the National Institute of Corrections (NIC) may be able to assist with travel costs for Board members.

Schorr indicated she would be willing to stay and tour the Tampa facility if there is funding available to offset costs.

Heier asked whether the County Clerk will need to accompany the Board on the tours, as there will be a quorum.

Kerry Eagan, Chief Administrative Officer, suggested that the Board seek a legal opinion.

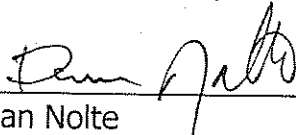
Stevens asked who else will participate in the tours.

Thurber said he and one or two members of his department will accompany the Board on the tours. The consultants will also be present. He said Gary Hill, a member of the Jail Design Request for Proposals (RFP) Review Committee, has also indicated interest in touring the facilities, at his own cost.

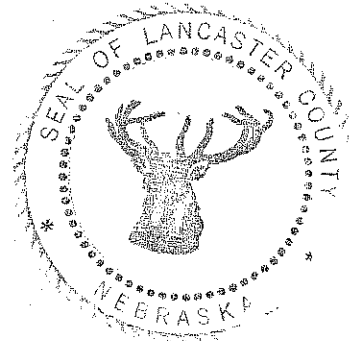
ROLL CALL: Stevens, Schorr, Heier and Hudkins voted aye. Motion carried.

5 ADJOURNMENT

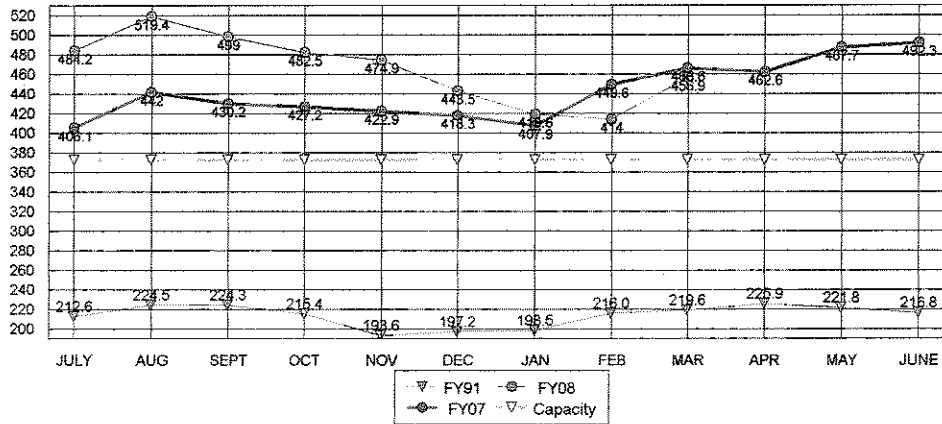
MOTION: Stevens moved and Hudkins seconded to adjourn the meeting at 9:32 a.m. Stevens, Schorr, Heier and Hudkins voted aye. Motion carried.



Dan Nolte
Lancaster County Clerk



**TOTAL POPULATIONS
 FY91, FY07, FY08**

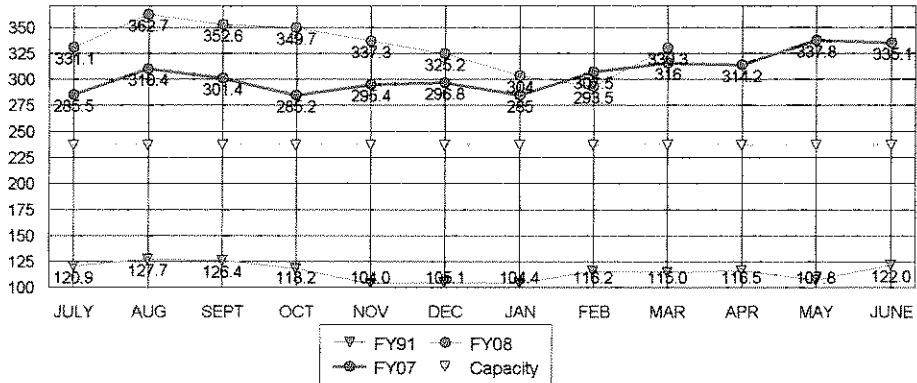


AVERAGES

FY08 TO DATE	466.0
FY07 SAME PERIOD	430.1
FY07 TO YR-END	442.8

8.3% Change in FY07 to date over same period last year
5.2% Change in FY07 to date over FY06 average to year-end

**JAIL-OFF SITE CO. POPULATION
 FY91, FY07, FY08**

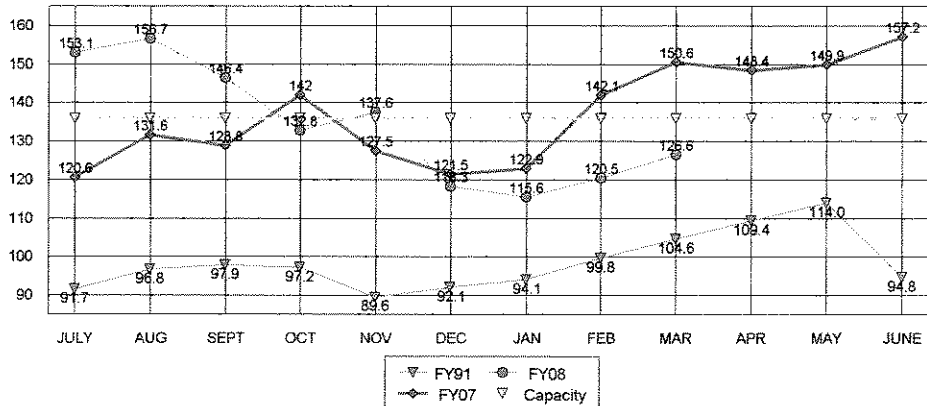


AVERAGES

FY08 TO DATE	331.8
FY07 SAME PERIOD	298.1
FY07 TO YR-END	305.9

11.3% Change in FY08 to date over same period last year
8.5% Change in FY08 to date over FY07 average to year-end

**LCF-ONLY POPULATION
 FY91, FY07, FY08**



AVERAGES

FY08 TO DATE	134.2
FY07 SAME PERIOD	132.0
FY07 TO YR-END	136.9

1.7% Change in FY08 to date over same period last year
-2.0% Change in FY08 to date over FY07 average to year-end

**LANCASTER COUNTY CORRECTIONS DEPARTMENT
MONTHLY STATUS REPORT**

CALENDAR YEAR 2007

07cal

2007

INTAKE & DETENTION FACILITY	JAN	FEB	MAR	APR	MAY	JUN	JUL	AUG	SEPT	OCT	NOV	DEC	AVERAGE TO DATE	TOTAL TO DATE
Average Daily Population	251.5	273.2	276.5	275.0	287.3	280.0	275.8	303.1	287.8	280.0	262.1	251.7	275	N/A
High for Month	267	299	295	298	309	299	298	335	328	308	280	275	299	N/A
Low for Month	238	255	254	248	261	260	251	285	263	257	238	233	254	N/A
Platte County ADP	33.5	34.3	39.5	39.0	41.0	44.0	45.2	49.8	49.6	48.5	48.0	46.8	43	N/A
Butler County ADP					10.0	10.0	10.0	10.0	10.0	12.0	15.0	15.5	12	N/A
York County ADP										3.1	7.0	4.2	5	
Total Number of Bookings	854	862	1010	1053	1161	994	984	933	803	801	732	616	900	10,803
New Bookings	241	230	256	247	303	284	289	282	258	235	199	173	250	2,998
Felony Arrests	137	129	149	167	167	166	176	183	153	157	140	140	155	1,864
Misdemeanor Arrests	483	546	673	713	767	631	604	541	494	481	430	349	559	6,712
Domestic Violence Arrests	47	39	49	53	49	42	62	55	56	53	54	53	51	612
DWI Arrests	143	137	130	164	180	144	133	126	90	129	88	63	127	1,527
Felons Sentenced	5	8	8	9	7	7	11	9	4	13	7	6	8	94
Misdemeanants Sentenced	166	138	116	132	163	136	127	126	81	99	92	65	120	1,441
Held for Other Jurisdictions	63	41	46	50	57	54	66	74	71	57	63	56	58	698
Total Conditionally Released	293	313	364	380	407	323	301	296	274	272	300	222	312	3,745
Percent Conditionally Released	34.31%	36.31%	36.04%	36.09%	35.06%	32.50%	30.59%	31.73%	34.12%	33.96%	40.98%	36.04%	35%	N/A
Pre-Arrestment Releases	210	193	196	199	179	164	190	180	184	172	211	151	186	2,229
Court Disposition Releases	83	120	168	181	228	159	111	116	90	100	89	71	126	1,516
Total of Individuals Lodged	561	549	646	673	754	671	683	637	529	529	432	394	588	7,058

LANCASTER CORRECTIONAL FACILITY

Average Daily Population	122.9	142.1	150.0	153.0	149.9	157.2	153.1	156.7	146.4	132.8	137.6	118.3	143	N/A
High for Month	139	156	156	156	157	158	158	158	168	144	150	137	153	N/A
Low for Month	111	132	137	147	137	151	143	149	127	124	126	99	132	N/A
Estimated Value of Inmate Labor @ \$5.15	\$4,398	\$4,187	\$3,414	\$3,507	\$3,394	\$3,811	\$2,704	\$2,524	\$2,843	\$2,338	\$1,808	\$2,153	\$3,090	\$37,081

MEDICAL/MENTAL HEALTH SERVICES

Referred to Jail Physician	60	41	48	46	42	48	29	45	26	49	30	32	41	496
Referred to Mental Health/LRC	5	5	3	3	4	2	4	7	11	4	4	1	4	52
Transferred to Emergency Room	6	7	2	7	2	1	2	4	5	3	4	0	4	43

APPENDIX 2

**LANCASTER COUNTY CORRECTIONS DEPARTMENT
MONTHLY STATUS REPORT**

CALENDAR YEAR 2008

	2008			AVERAGE TO DATE	TOTAL TO DATE
	JAN	FEB	MAR		
INTAKE & DETENTION FACILITY					
Average Daily Population	241.9	242.6	271.2	252	N/A
High for Month	263	259	290	271	N/A
Low for Month	221	229	245	232	N/A
Platte County ADP	39.3	32.9	39.9	37	N/A
Butler County ADP	12.8	11.9	12.5	12	N/A
York County ADP	4.5	1.1	0.0	2	N/A
Total Number of Bookings	770	744	790	768	2,304
New Bookings	205	217	214	212	636
Felony Arrests	131	141	174	149	446
Misdemeanor Arrests	510	444	499	484	1,453
Domestic Violence Arrests	62	50	54	55	166
DWI Arrests	69	66	72	69	207
Felons Sentenced	14	21	10	15	45
Misdemeanants Sentenced	59	67	57	61	183
Held for Other Jurisdictions	56	71	50	59	177
Total Conditionally Released	302	298	323	308	923
Percent Conditionally Released	39.22%	40.50%	40.89%	40%	N/A
Pre-Arrestment Releases	219	220	237	225	676
Court Disposition Releases	84	78	86	83	248
Total of Individuals Lodged	468	446	467	460	1,381

LANCASTER CORRECTIONAL FACILITY					
Average Daily Population	115.6	120.5	126.6	121	N/A
High for Month	126	132	137	132	N/A
Low for Month	103	110	114	109	N/A
Estimated Value of Inmate Labor @ \$5.15	\$1,864	\$2,230	\$2,220	\$2,105	\$6,314

MEDICAL/MENTAL HEALTH SERVICES					
Referred to Jail Physician	30	27	29	29	86
Referred to Mental Health/LRC	4	0	8	4	12
Transferred to Emergency Room	3	5	6	5	14

APPENDIX 3