

LANCASTER COUNTY CORRECTIONS DEPARTMENT

605 SOUTH TENTH STREET
LINCOLN, NE 68508
(402) 441-7530
FAX: 441-8946

MICHAEL THURBER, DIRECTOR

LANCASTER COUNTY CORRECTIONS BOARD

-AGENDA-

February 14, 2008
Thursday @ 9:00

LANCASTER COUNTY CORRECTIONS BOARD

- AGENDA -

**Thursday, February 14, 2008
9:00 a.m.**

- I. Approval of the October 25, 2007 Meeting**

- II. Population Statistics**
 - A. Population Comments
 - B. Population Graphs-Appendix 1
 - C. Monthly Statistical Report-Appendix 2 & 3

- III. Department Activities**
 - A. Training
 - B. Mental Health Jail Diversion Project
 - C. Out of County Housing
 - D. LCF/Work Crew Activities
 - E. Programs Division

- IV. New Business**
 - A. Architectural Design Workshop

- V. Adjournment**

Attachments.

- 1 - Oct. 25, 2007 Minutes
- 2 - Population Graphs
- 3- Monthly Status Reports
- 4- LCF Community Service

Lancaster County Corrections Board
Meeting of Thursday, February 14, 2008

I. APPROVAL OF MINUTES- Oct. 25, 2007

II. POPULATION STATISTICS	<u>2006</u>	<u>2007</u>	Change
	Oct.-Dec.	Oct.-Dec.	
Average Daily Population	422.9	461.2	+ 9.1 %
JAIL/ Platte/Butler	292.5	331.6	+ 13.4 %
LCF	130.4	129.6	- .6 %
Total Bookings	2,407.0	2,149.0	- 10.7 %
Average per month	802.3	716.3	
Total Lodgings	1,592.0	1,355.0	- 14.9 %
Average per month	530.7	451.7	
Platte County Inmate Housing			
Average per month	34.4	48.0	+ 39.7 %
-Beginning Sept. 05			
Butler County Inmate Housing		14.3	
Average per month			
-Beginning May 07			
York County Inmate Housing		4.7	
Average per month			
-Beginning Oct. 07			

Population Comments

A. The population statistics for the last quarter of 2007 showed an increase of approximately 9%. This population increase is due to the larger out of county housing over the same period in 2006. During the start of this quarter, October 2007, we began placing a few inmates in the York County Jail.

It is noteworthy to point out the decrease in the total lodging per month, 451 compared to 530 monthly average over the same time period one year before. This will help us to decrease our overall population in the upcoming first quarter of 2008.

B. Population Graph (see attached) Appendix 1

The population graph shows the month to month populations for FY07 and FY08. This graph shows the facility's rated capacity as of 1991 when the Adult Detention Facility opened.

C. Monthly Statistical Report (see attached) Appendix 2 & 3, FY07-FY08

This is a statistical report giving the average daily population for both facilities, number of bookings, types of arrests and releases, as well as medical and mental health services provided.

III. DEPARTMENT ACTIVITIES

A. TRAINING

During the period from October to December, 2007, the training division conducted approximately 220 interviews with potential correctional officer candidates as well as a handful of interviews for nurses.

Orientation training was provided for six new officers (3 on-call, 3 full-time) and a Chaplain. Orientation was also provided to one probation officer so that he may come into the facility to conduct interviews.

Four full-time officers completed the 12-week field training program designed to help in the training of new officers during their first three months on the job. Three other officers are currently enrolled in the program.

Lt. Anderson participated in County Government Day where he discussed career opportunities in Corrections with several groups of high school age students.

B. MENTAL HEALTH JAIL DIVERSION PROJECT

In 2007, the project has diverted 33 individuals, with a total of 165 people since the onset of the program. They have been able to take some felonies independent of Drug Court and Pretrial Release. Deb Van Lent and Renee Felder continue as case managers and are having continued success with the individuals they are assigned to.

Currently, the project is pursuing a part-time peer support staff person to work with people transitioning out of the program. This will allow Deb and Renee to take on extra caseloads while they are waiting for ongoing services to pick up case management.

The Mental Health Diversion Project has an article being published in American Jails on Feb. 4, 2008. This is part one of a two-part article.

C. OUT OF COUNTY HOUSING

Lancaster County continues to house inmates in Platte and Butler counties due to over crowding. Between the months of October and December, 2007, we maintained an average population of 48 inmates in Platte County. During this same time period, 26 round-trip transports were conducted, moving 234 inmates between the two facilities.

Butler County's average population for this same time period was 14.3. We moved 65 inmates between the two facilities.

The department initiated an agreement with York County to house additional inmates. The average population for this time period was 4.7. We moved 14 inmates between the two facilities. Total for all three facilities consumed 196.5 staff hours.

In addition to Platte, Butler, and York County duties, the transport division transported 3,264 inmates to court, doctor's appointments or other locations. This required approximately 1,483 staff hours to complete.

D. LCF/WORK CREW ACTIVITIES

October 2007

- Sprayed acoustical ceilings in LCF restrooms.
- Removed shelving for Record & Information Mgt. & moved to surplus property
- Routine Fall maintenance of air handlers.

November 2007

- Picked up several loads of furniture from the Health Dept. & delivered to the Election Commissioner.
- Removed cabinets from the Election Commission & delivered to county surplus
- Routine building maintenance for both facilities.

December 2007

- Disassembled and removed two large Roto Filing cabinets and hauled to Alder Scrap Metal. This work was done over 2 days for the Election Commissioner.
- Moved office furniture for the County Extension office for carpeting installation.
- Routine building maintenance for both facilities.

Attached are reports covering the activity of the Community Service Litter Removal Program. During the six years the program has been operating, 392 trips resulted in 2,285 miles of county roads have been cleared of litter. This figure includes both sides of each mile or road. Over 6,000 bags of litter were collected for disposal. Numerous tires and other larger items were also removed from the roadways. LCF inmates provided 7,426 hours of labor. In addition to picking up litter, the crews installed 2,240 address signs from August to November, 2005.

In 2007, the program was active from May until mid November. There were 102 trips made that resulted in 729 miles of road cleared of 2,355 bags of litter. Inmates provided 1,941 hours of labor.

E. PROGRAMS DIVISION

The Correctional Specialists coordinated an average of 29 evaluations per month with the consulting psychiatrist in the months of October, November, and December 2007. An average of three inmates per month were placed into Emergency Protective custody and transferred with a jail hold to the Crisis Center or Lincoln Regional Center due to meeting the criteria of mental illness and dangerousness to oneself or others. Correctional Specialists had an average of 464 contacts with inmates each month during this quarter, in which mental health, personal problems, or coping with confinement were addressed.

In addition to attending to the mental health needs of inmates and providing support and assistance in coping with confinement, Correctional Specialists and the Chaplain coordinated an average of 149 educational, self-help, and religious programs per month during this time period. This number represents programs offered at both the downtown Intake and Detention Facility and the Lancaster Correctional Facility at airpark.

The Work Release Coordinator reviewed an average of 187 court ordered release applications per month in October, November and December, 2007. This number reflects both District and County Court applications. The average number of individuals on work release in these months was 49.

Effective December 1, 2007, Corrections took over the collection of our department's work release costs at the request of the County Court administrative and judicial staff. Prior to this date, the costs were collected by County Court. The format and procedures for cost collection has been changed, with the inmate now responsible for providing regularly scheduled payments one week in advance to cover their work release costs.

The Intake and Detention Facility continues to experience a demand for professional contact visitation. An average of 12 professional contact visits per month were scheduled for inmates during this quarter. Programs staff investigated a total of 331 inmate grievances and a total of 44 inmate tort claims in the 2007 calendar year.

IV. NEW BUSINESS

- A. We have conducted the first Architectural Design Workshop with the Clark Enerson/PSA Dewberry Group from February 11-13, 2008. Other workshops will be scheduled in the upcoming weeks.

**MINUTES
BOARD OF CORRECTIONS
QUARTERLY MEETING
COUNTY-CITY BUILDING, ROOM 113
THURSDAY, OCTOBER 25, 2007
11:15 A.M.**

Commissioners Present: Bernie Heier, Chair
Bob Workman, Vice Chair
Larry Hudkins
Ray Stevens
Deb Schorr

Others Present: Kerry Eagan, Chief Administrative Officer
Gwen Thorpe, Deputy Chief Administrative Officer
Cori Beattie, Deputy County Clerk
Ann Taylor, County Clerk's Office

The Chair opened the meeting at 11:51 a.m.

AGENDA ITEM

1 APPROVAL OF BOARD OF CORRECTIONS MINUTES OF THURSDAY, AUGUST 23, 2007

MOTION: Stevens moved and Hudkins seconded approval of the Board of Corrections Meeting minutes dated August 23, 2007. Hudkins, Heier, Workman, Stevens and Schorr voted aye. Motion carried.

2 POPULATION STATISTICS

A. Population Comments

Mike Thurber, Corrections Director, said this is the second quarter in a row in which there has been over a 10% increase in population. He also reported a small decrease in bookings this quarter.

B. Population Graphs

See agenda packet.

Hudkins said he believes the Douglas County's contract costs are too high and encouraged Thurber to utilize the other facilities.

Schorr noted that Douglas County is willing to accept more difficult inmates.

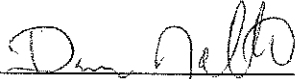
MOTION: Schorr moved and Stevens seconded to authorize the Corrections Director to house up to 90 inmates at out-of-county facilities. Schorr, Stevens, Workman, Heier and Hudkins voted aye. Motion carried.

Heier noted that the Requests for Proposals (RFP's) for jail design are scheduled to be reviewed on November 15th.

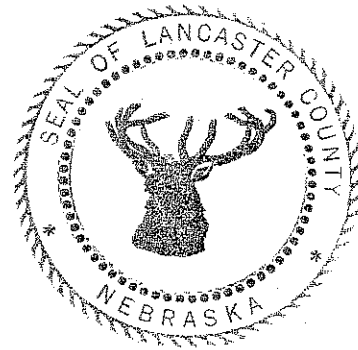
Kerry Eagan, Chief Administrative Officer, reported receipt of a legal opinion that states Lancaster County cannot utilize private jails.

5 ADJOURNMENT

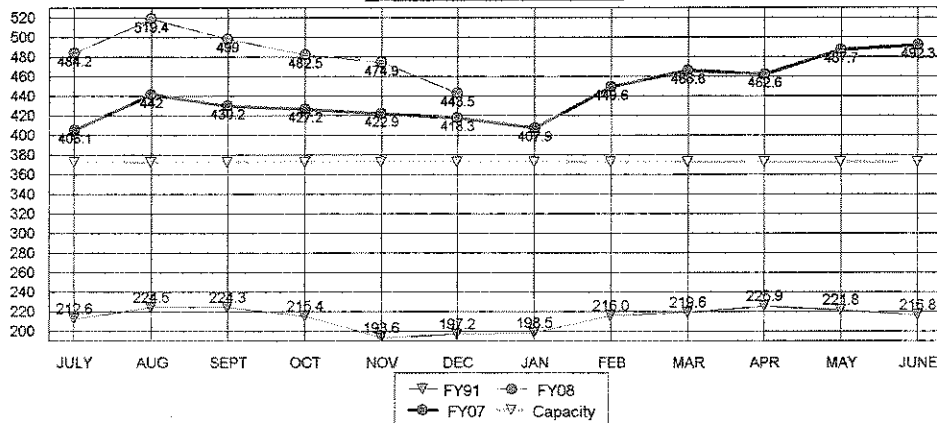
MOTION: Stevens moved and Schorr seconded to adjourn the meeting at 12:08 p.m. Schorr, Stevens, Workman, Heier and Hudkins voted aye. Motion carried.



Dan Nolte
Lancaster County Clerk



**TOTAL POPULATIONS
 FY91, FY07, FY08**

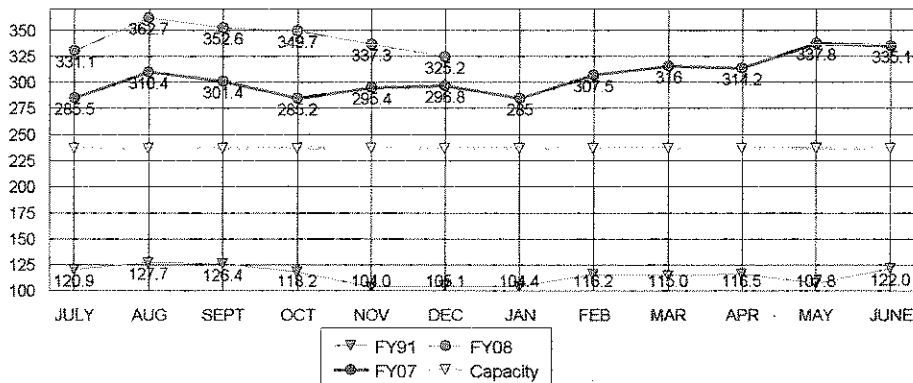


AVERAGES

FY08 TO DATE	483.9
FY07 SAME PERIOD	424.5
FY07 TO YR-END	442.8

14.0%	Change in FY07 to date over same period last year
9.3%	Change in FY07 to date over FY06 average to year-end

**JAIL-OFF SITE CO. POPULATION
 FY91, FY07, FY08**

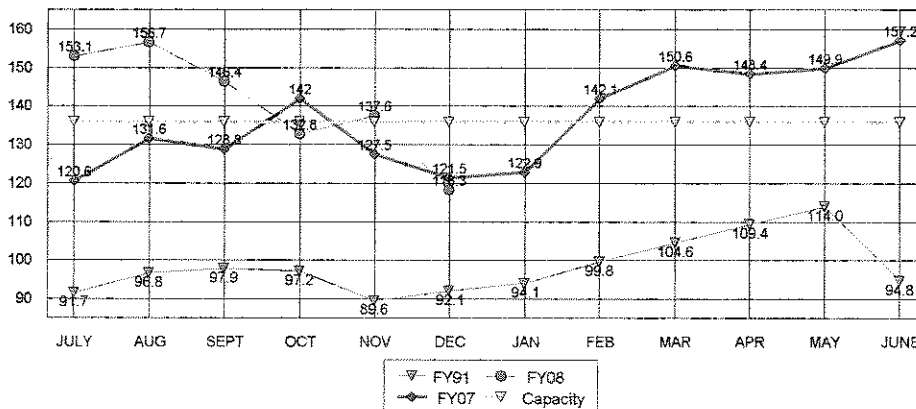


AVERAGES

FY08 TO DATE	343.1
FY07 SAME PERIOD	295.8
FY07 TO YR-END	305.9

16.0%	Change in FY08 to date over same period last year
12.2%	Change in FY08 to date over FY07 average to year-end

**LCF-ONLY POPULATION
 FY91, FY07, FY08**



AVERAGES

FY08 TO DATE	140.8
FY07 SAME PERIOD	128.7
FY07 TO YR-END	136.9

9.4%	Change in FY08 to date over same period last year
2.8%	Change in FY08 to date over FY07 average to year-end

**LANCASTER COUNTY CORRECTIONS DEPARTMENT
MONTHLY STATUS REPORT**

FISCAL YEAR 2008

2007

	JUL	AUG	SEP	OCT	NOV	DEC	AVERAGE TO DATE	TOTAL TO DATE
INTAKE & DETENTION FACILITY								
Average Daily Population	275.8	303.1	287.8	280.0	262.1	251.7	276.8	N/A
High for Month	298	335	328	308	280	275	304.0	N/A
Low for Month	251	285	263	257	238	233	254.5	N/A
Platte County ADP	45.0	49.8	49.6	48.5	48.0	46.8	48.0	N/A
Butler County ADP	10	10	10	12	15	16	12.0	N/A
York County ADP				3	7	4	4.9	
Total Number of Bookings	984	933	803	801	732	616	811.5	4,869
Felony Arrests	176	183	153	157	140	140	158.2	949
Misdemeanor Arrests	604	541	494	481	430	349	483.2	2,899
Felons Sentenced	11	9	4	13	7	6	8.3	50
Misdemeanants Sentenced	127	126	81	99	92	65	98.3	590
Held for Other Jurisdictions	66	74	71	57	63	56	64.5	387
Total Conditionally Released	301	296	274	272	300	222	277.5	1,665
Percent Conditionally Released	30.59%	31.73%	34.12%	33.96%	40.98%	36.04%	34.6%	34.6%
Pre-Arrestment Releases	190	180	184	172	211	151	181.3	1,088
Court Disposition Releases	111	116	90	100	89	71	96.2	577
Total of Individuals Lodged	683	637	529	529	432	394	534.0	3,204
LANCASTER CORRECTIONAL FACILITY								
Average Daily Population	153.1	156.7	146.4	132.8	137.6	118.3	140.8	N/A
High for Month	158	158	168	144	150	137	152.5	N/A
Low for Month	143	149	127	124	126	99	128.0	N/A
Estimated Value of Inmate Labor	\$2,704	\$2,524	\$2,843	\$2,338	\$1,808	\$1,803	\$2,336	\$14,019
MEDICAL/MENTAL HEALTH SERVICES								
Referred to Jail Physician	29	45	26	49	30	32	35	211
Referred to Mental Health/LRC	4	7	11	4	3	1	5	30
Transferred to Emergency Room	2	4	5	3	4	0	3	18

**LANCASTER COUNTY CORRECTIONS DEPARTMENT
MONTHLY STATUS REPORT**

2007

07cal

CALENDAR YEAR 2007

INTAKE & DETENTION FACILITY	JAN	FEB	MAR	APR	MAY	JUN	JUL	AUG	SEPT	OCT	NOV	DEC	AVERAGE TO DATE	TOTAL TO DATE
Average Daily Population	251.5	273.2	276.5	275.0	287.3	280.0	275.8	303.1	287.8	280.0	262.1	251.7	275	N/A
High for Month	267	299	295	298	309	299	298	335	328	308	280	275	299	N/A
Low for Month	238	255	254	248	261	260	251	285	263	257	238	233	254	N/A
Platte County ADP	34	34	40	39	41	44	45	50	50	49	48	47	43	N/A
Butler County ADP					10	10	10	10	10	12	15	16	12	N/A
York County ADP											3	4	5	
Total Number of Bookings	854	862	1010	1053	1161	994	984	933	803	801	732	616	900	10,803
New Bookings	241	230	256	247	303	284	289	282	258	173	199	170	250	2,998
Felony Arrests	137	129	167	149	167	166	176	183	153	140	157	140	155	1,864
Misdemeanor Arrests	483	546	673	713	767	631	604	541	494	481	430	349	559	6,712
Domestic Violence Arrests	47	39	49	53	49	42	62	55	56	53	54	53	51	612
DWI Arrests	143	137	130	164	180	144	133	126	90	129	88	63	127	1,527
Felons Sentenced	5	8	8	9	7	7	11	9	4	13	7	6	8	94
Misdemeanants Sentenced	166	138	116	132	163	136	127	126	81	99	92	65	120	1,441
Held for Other Jurisdictions	63	41	46	50	57	54	66	74	71	57	63	56	58	698
Total Conditionally Released	293	313	364	380	407	323	301	296	274	272	300	222	312	3,745
Percent Conditionally Released	34.31%	36.31%	36.04%	36.09%	35.06%	32.50%	30.59%	31.73%	34.12%	33.96%	40.98%	36.04%	35%	N/A
Pre-Arrestment Releases	210	193	196	199	179	164	190	180	184	172	211	151	186	2,229
Court Disposition Releases	83	120	168	181	228	159	111	116	90	100	89	71	126	1,516
Total of Individuals Lodged	561	549	646	673	754	671	683	637	529	529	432	394	588	7,058

LANCASTER CORRECTIONAL FACILITY

Average Daily Population	122.9	142.1	150.0	153.0	149.9	157.2	153.1	156.7	146.4	132.8	137.6	118.3	143	N/A
High for Month	139	156	156	156	157	158	158	158	168	144	150	137	153	N/A
Low for Month	111	132	137	147	137	151	143	149	127	124	126	99	132	N/A
Estimated Value of Inmate Labor @ \$5.15	\$4,398	\$4,187	\$3,414	\$3,507	\$3,394	\$3,811	\$2,704	\$2,524	\$2,843	\$2,338	\$1,808	\$1,803	\$3,061	\$36,731

MEDICAL/MENTAL HEALTH SERVICES

Referred to Jail Physician	60	41	48	46	42	48	29	45	26	49	30	32	41	496
Referred to Mental Health/LRC	5	5	3	3	4	2	4	7	11	4	3	1	4	52
Transferred to Emergency Room	6	7	2	7	2	1	2	4	5	3	4	0	4	43

APPENDIX 2

**LANCASTER COUNTY CORRECTIONS
COMMUNITY SERVICE PROGRAM
COUNTY ROAD LITTER PICK-UP
October, 2007**

NUMBER OF COUNTY ROAD CLEAN-UP TRIPS: 17

TOTAL INMATE HOURS WORKED: 211.5

TOTAL STAFF HOURS WORKED: 113

ROAD DISTANCE CLEARED OF LITTER: 92.5 miles (both sides of road)

BAGS OF LITTER REMOVED: 545

November, 2007

NUMBER OF COUNTY ROAD CLEAN-UP TRIPS: 9

TOTAL INMATE HOURS WORKED: 125

TOTAL STAFF HOURS WORKED: 62.5

ROAD DISTANCE CLEARED OF LITTER: 59 miles (both sides of road)

BAGS OF LITTER REMOVED: 346

**LANCASTER COUNTY CORRECTIONS
COMMUNITY SERVICE PROGRAM
COUNTY ROAD LITTER PICK-UP
May - November, 2007**

NUMBER OF COUNTY ROAD CLEAN-UP TRIPS: 102

TOTAL INMATE HOURS WORKED: 1941

TOTAL STAFF HOURS WORKED: 693

ROAD DISTANCE CLEARED OF LITTER: 729.5 miles (1 mile = both sides of road)

BAGS OF LITTER REMOVED: 2355

**LANCASTER COUNTY CORRECTIONS
COMMUNITY SERVICE PROGRAM
COUNTY ROAD LITTER PICK-UP
2001- 2007**

NUMBER OF COUNTY ROAD CLEAN-UP TRIPS: 392

TOTAL INMATE HOURS WORKED: 7,426

TOTAL STAFF HOURS WORKED: 2,518

ROAD DISTANCE CLEARED OF LITTER: 2,285 miles (1 mile = both sides of road)
(Lancaster County has approximately 1475 miles of county roads)

BAGS OF LITTER REMOVED: 6,056