

LANCASTER COUNTY CORRECTIONS DEPARTMENT

605 SOUTH TENTH STREET
LINCOLN, NE 68508
(402) 441-7530
FAX: 441-8946

MICHAEL THURBER, DIRECTOR

LANCASTER COUNTY CORRECTIONS BOARD

-AGENDA-

October 25, 2007

LANCASTER COUNTY CORRECTIONS BOARD

- AGENDA -

Thursday, October 25, 2007
11:15 a.m.

- I. Approval of the August 23, 2007 Meeting**

- II. Population Statistics**
 - A. Population Comments
 - B. Population Graphs-Appendix 1
 - C. Monthly Statistical Report-Appendix 2 & 3

- III. Department Activities**
 - A. Training
 - B. Mental Health Jail Diversion Project
 - C. Platte/Butler County Housing
 - D. LCF/Work Crew Activities

- IV. New Business**
 - A. Out of County Beds

- V. Adjournment**

Attachments.

- 1 - Aug. 23, 2007 Minutes
- 2 - Population Graphs
- 3- Monthly Status Reports
- 4- LCF Community Service: July-September, 2007

Lancaster County Corrections Board
Meeting of Thursday, October 25, 2007

I. APPROVAL OF MINUTES- Aug. 23, 2007

II. POPULATION STATISTICS	<u>2006</u> July-Sept.	<u>2007</u> July-Sept.	Change
Average Daily Population	426.1	499.1	+ 17.1 %
JAIL/ Platte/Butler	299.1	347.0	+ 16.0 %
LCF	127.0	152.1	+ 19.7%
Total Bookings	2,655.0	2,720.0	+ 2.4%
Average per month	885.0	906.7	
Total Lodgings	1,724.0	1,849.0	+ 7.3%
Average per month	574.7	616.3	
Platte County Inmate Housing			
Average per month	33.9	48.1	+ 41.8 %
-Beginning Sept. 05			
Butler County Inmate Housing		10.0	
Average per month			
-Beginning May 07			

Population Comments

A. For the second straight quarter, the department is experiencing an all time record high population. As reported in our last Corrections Board meeting, the inmate population growth that started in early April 2007, has continued to increase through September.

We continue to out source inmates to Platte and Butler County. Butler County came on board in late May, 2007. We have seen a small decrease in our booking numbers as compared to the second quarter of April-June, 2007.

Beginning October 12, 2007, we began contracting with York County to house up to 10 inmates. We continue to work with Douglas and Saline County regarding contracts for housing inmates.

B. Population Graph (see attached) Appendix 1

The population graph shows the month to month populations for FY07 and FY08. This graph shows the facility's rated capacity as of 1991 when the Adult Detention Facility opened.

C. Monthly Statistical Report (see attached) Appendix 2 & 3, FY07-FY08

This is a statistical report giving the average daily population for both facilities, number of bookings, types of arrests and releases, as well as medical and mental health services provided.

III. DEPARTMENT ACTIVITIES

A. TRAINING

In the period from July 1, 2007 through September 30, 2007, the training division conducted approximately 200 interviews with potential Correctional Officer candidates, as well as a handful of interviews for nurses and clerk typists.

Orientation training was provided for eleven new officers (3-on call, 8-full time) and three clerk typists. A new orientation training program was developed for our Chaplain position.

In July, an in-service training session was held for all uniform staff on emergency procedures and van driver safety. Department administrative support staff also completed training on emergency procedures.

Eight officers attended the Officer's Training Academy, which is an 80 hour training course intended for officers who have been with the department for approximately 3 to 6 months.

Three full time officers completed the 12 week Field Training Officer Program, designed to help in the training of new officers in their first three months on the job. Nine other officers are currently enrolled in the program.

Three supervisors attended a training session with the Continental Insurance Group regarding safety issues for large passenger vans.

Two supervisors attended a training session sponsored by the Nebraska State Corrections Department to certify them as a Medication Aide.

In August, nine staff members of the department attended the American Correctional Association conference in Kansas City, MO.

The training division also coordinated the department's booth at the Nebraska State Fair. This year the department provided parents of over 1,200 children a free identification kit.

B. MENTAL HEALTH JAIL DIVERSION PROJECT

The Diversion Project continues to run at capacity. They're currently waiting for clients to transition to regular case management services in order to take on additional clients.

The Mental Health Jail Diversion Project recently reported to the County Board on their SAMSHA grant research outcome. Highlights included that most of their clients, even those who don't complete the program successfully, are showing less recidivism and shorter stays in jail than prior to being apart of the program. They are also seeing less utilization of other services such as the Crisis Center and emergency rooms. Getting individuals into substance abuse treatment in a timely manner continues to be their greatest barrier.

The project is running under the Bureau of Justice grant, supplemented by the County Board. This grant requires less intensive research, but the project continues to review data on recidivism and the use of other services on a more limited basis.

C. PLATTE/BUTLER COUNTY HOUSING

Lancaster County continues to house inmates at Platte and Butler counties due to overcrowding. Between the months of July-September, 2007, we maintained an average of 48.1 inmates in Platte County. During this same time period, 24 round trip transports were conducted moving 218 inmates between the two facilities.

Butler County's average population for this time period was 10 inmates. We moved 44 inmates between the two facilities. These duties consumed 155 staff hours.

In addition to Platte and Butler County duties, the transport division transported 3,879 inmates to court, doctor's appointments, or other locations. This required approximately 1,380 staff hours to complete.

D. LCF/WORK CREW ACTIVITIES

In House Projects at LCF

- Dorm areas painted.
- Repaired and textured ceilings in the shower rooms.
- Repaired and textured hallways.

In House Projects at IDF

- Crews removed walkway pads on the roof..
- Maintenance staff assisted with installation of the new heating coil in the B yard area in preparation for future housing of inmates.
- Maintenance staff helped with adding air conditioning to the two security equipment rooms..

In July, crews moved storage items for Animal Control to the Health Department building located at 33rd & O.

Daily maintenance has increase tremendously due to increased population at IDF.

IV. NEW BUSINESS

- A. By signing the contract with York County for additional inmate beds, the department has now reached the 70 out of county beds set by the County Board.

As our population increases, there will be future needs for additional out of county beds. At this time, I would request the Board allow the department to contract for an additional 40 out of county beds.

We are continuing to work with Saline and Douglas County for these beds.

**MINUTES
BOARD OF CORRECTIONS
QUARTERLY MEETING
COUNTY-CITY BUILDING, ROOM 113
THURSDAY, AUGUST 23, 2007
8:30 A.M.**

Commissioners Present: Bob Workman, Vice Chair
Larry Hudkins
Ray Stevens
Deb Schorr

Commissioners Absent: Bernie Heier, Chair

Others Present: Kerry Eagan, Chief Administrative Officer
Gwen Thorpe, Deputy Chief Administrative Officer
Dan Nolte, County Clerk
Ann Taylor, County Clerk's Office

The Vice Chair opened the meeting at 8:34 a.m.

AGENDA ITEM

1 APPROVAL OF BOARD OF CORRECTIONS MINUTES OF THURSDAY, APRIL 12, 2007

MOTION: Stevens moved and Hudkins seconded approval of the Board of Corrections Meeting minutes dated April 12, 2007. Stevens, Workman, Schorr and Hudkins voted aye. Motion carried.

2 POPULATION STATISTICS

A. Population Comments

Mike Thurber, Corrections Director, said the average daily population is up 13.2 %. He said bookings are up 36.9% and said that is primarily due to a clearing of warrants.

Thurber said negotiations continue with Douglas County for additional out-of-county beds.

B. Population Graphs

See agenda packet.

C. Monthly Statistical Report

See agenda packet.

3 DEPARTMENT ACTIVITIES

A. Training

Thurber gave an overview of training activities which included the Officer's Training Academy and training through the United States Attorney's Office regarding the responsibility of law enforcement officers to notify Consular Officials when foreign nationals are arrested.

B. Mental Health Jail Diversion Project

Thurber said 152 individuals have been diverted through the program, to date. There are currently 27 clients, with three openings.

C. Platte/Butler County Housing

Thurber said Platte County has agreed to house up to 50 inmates and Butler is providing housing for 10.

D. Lancaster Correctional Facility (LCF)/Road Crew Projects

Thurber said crews continue to assist the Election Commissioner with elections by handing out materials for the polling sites. Crews also worked on in-house projects at LCF.

E. Programs Division

Thurber said the department coordinated an average of 31 evaluations, per month, with the consulting psychiatrist this quarter. An average of six inmates, per month, were placed in Emergency Protective Custody and transferred with a jail hold to the Crisis Center or the Lincoln Regional Center, meeting the criteria of mental illness and being a danger to themselves or others.

Thurber said the Work Release Coordinator reviewed an average of 192 court-ordered release applications, per month. The average number of individuals on work release this quarter was 51.

Thurber also reported an average of 12 professional contact visits, per month.

G. Building Development

Thurber reported on final site selection and said he is still working with the Purchasing Department on the Request for Proposals (RFP) for an architect.

4 NEW BUSINESS

A. Booking Fees

Lieutenant Brad Johnson gave an overview of the following (Exhibit A):

- ▶ Historical and Current Uses of Booking Fees
- ▶ 1997 National Institute of Justice Study
- ▶ Purposes of Booking Fee
- ▶ Current Status of Booking Fees
- ▶ Survey of Neighboring States
 - Olmsted County, Minnesota Program
- ▶ Status of Nebraska

Thurber said he will continue to explore the concept of booking fees. He said it might also be beneficial to reassess the work release fee.

Workman suggested that the County also explore legislation to provide incentives to the judges to utilize alternatives to incarceration.

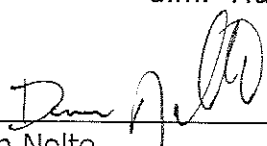
B. Out-of-County Beds

Thurber requested authorization to house an additional 30 offenders out-of-county, due to overcrowding. He said he will continue to explore housing options at different facilities throughout Nebraska.

The Board directed Thurber to report back when he finds the additional beds.

5 ADJOURNMENT

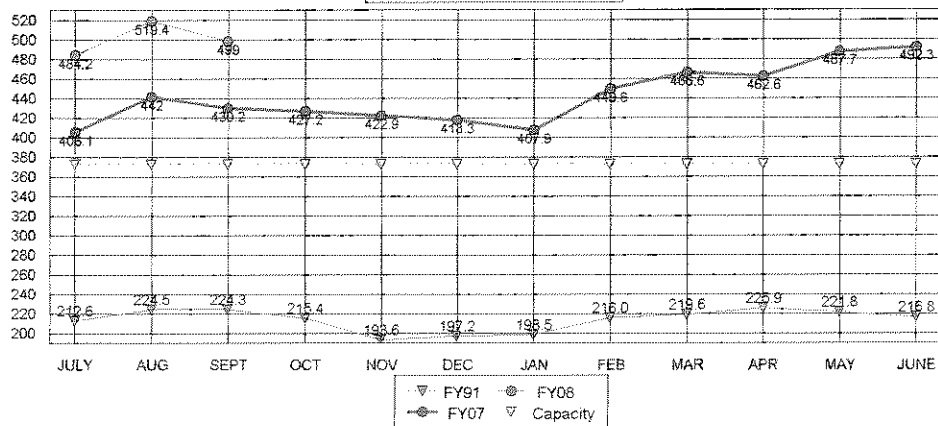
MOTION: Stevens moved and Hudkins seconded to adjourn the meeting at 9:15 a.m. Hudkins, Stevens, Schorr and Workman voted aye. Motion carried.



Dan Nolte
Lancaster County Clerk



**TOTAL POPULATIONS
 FY91, FY07, FY08**

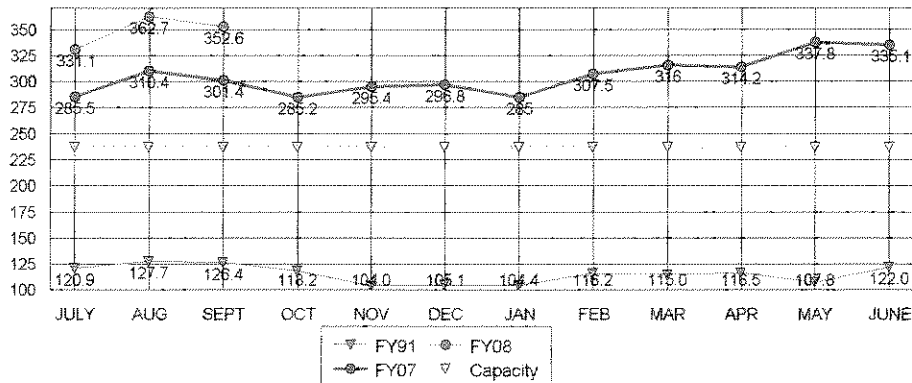


AVERAGES

FY08 TO DATE	500.9
FY07 SAME PERIOD	426.1
FY07 TO YR-END	442.8

17.5%	Change in FY07 to date over same period last year
13.1%	Change in FY07 to date over FY06 average to year-end

**JAIL-OFF SITE CO. POPULATION
 FY91, FY07, FY08**

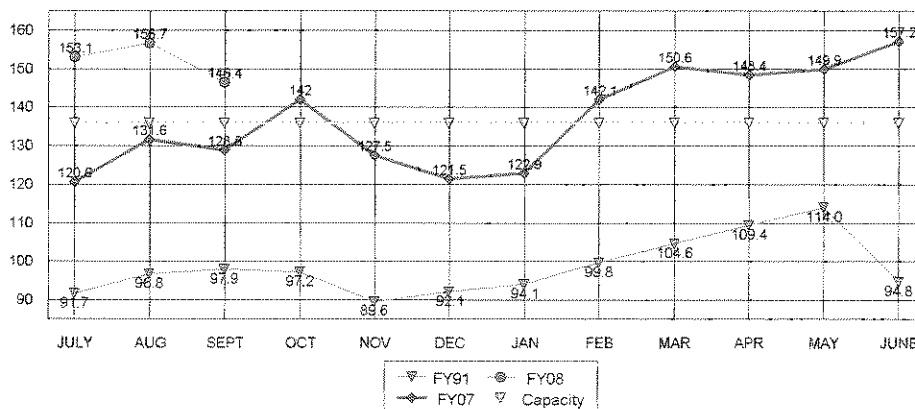


AVERAGES

FY08 TO DATE	348.8
FY07 SAME PERIOD	299.1
FY07 TO YR-END	305.9

16.6%	Change in FY08 to date over same period last year
14.0%	Change in FY08 to date over FY07 average to year-end

**LCF-ONLY POPULATION
 FY91, FY07, FY08**



AVERAGES

FY08 TO DATE	152.1
FY07 SAME PERIOD	127.0
FY07 TO YR-END	136.9

19.7%	Change in FY08 to date over same period last year
11.1%	Change in FY08 to date over FY07 average to year-end

LANCASTER COUNTY CORRECTIONS DEPARTMENT
MONTHLY STATUS REPORT

07cal

2007

CALENDAR YEAR 2007

INTAKE & DETENTION FACILITY	JAN	FEB	MAR	APR	MAY	JUN	JUL	AUG	SEPT	OCT	NOV	DEC	AVERAGE TO DATE	TOTAL TO DATE
Average Daily Population	251.5	273.2	276.5	275.0	287.3	280.0	275.8	303.1	287.8				279	N/A
High for Month	267	299	295	298	309	299	298	335	328				303	N/A
Low for Month	238	255	254	248	261	260	251	285	263				257	N/A
Platte County ADP	34	34	40	39	41	44	45	50	50				42	N/A
Butler County ADP					10	10	10	10	10				10	N/A
Total Number of Bookings	854	862	1010	1053	1161	994	984	933	803				962	8,654
New Bookings	241	230	256	247	303	284	289	282	258				266	2,391
Felony Arrests	137	129	167	149	167	166	176	183	153				159	1,427
Misdemeanor Arrests	483	546	673	713	767	631	604	541	494				606	5,452
Domestic Violence Arrests	47	39	49	53	49	42	62	55	56				50	452
DWI Arrests	143	137	130	164	180	144	133	126	90				139	1,247
Felons Sentenced	5	8	8	9	7	7	11	9	4				8	68
Misdemeanants Sentenced	166	138	116	132	163	136	127	126	81				132	1,185
Held for Other Jurisdictions	63	41	46	50	57	54	66	74	71				58	522
Total Conditionally Released	293	313	364	380	407	323	301	296	274				328	2,951
Percent Conditionally Released	34.31%	36.31%	36.04%	36.09%	35.06%	32.50%	30.59%	31.73%	34.12%				34%	N/A
Pre-Arrestment Releases	210	193	196	199	179	164	190	180	184				188	1,695
Court Disposition Releases	83	120	168	181	228	159	111	116	90				140	1,256
Total of Individuals Lodged	561	549	646	673	754	671	683	637	529				634	5,703

LANCASTER CORRECTIONAL FACILITY

Average Daily Population	122.9	142.1	150.0	153.0	149.9	157.2	153.1	156.7	146.4				148	N/A
High for Month	139	156	156	156	157	158	158	158	168				156	N/A
Low for Month	111	132	137	147	137	151	143	149	127				137	N/A
Estimated Value of Inmate Labor @ \$5.15	\$4,398	\$4,187	\$3,414	\$3,507	\$3,394	\$3,811	\$2,704	\$2,524	\$2,843				\$3,420	\$30,782

MEDICAL/MENTAL HEALTH SERVICES

Referred to Jail Physician	60	41	48	46	42	48	29	45	26				43	385
Referred to Mental Health/LRC	5	5	3	3	4	2	4	7	11				5	44
Transferred to Emergency Room	6	7	2	7	2	1	2	4	5				4	36

APPENDIX 2

LANCASTER COUNTY CORRECTIONS DEPARTMENT
MONTHLY STATUS REPORT

FISCAL YEAR 2008

	2007			2008												TOTAL TO DATE
	JUL	AUG	SEP	OCT	NOV	DEC	JAN	FEB	MAR	APR	MAY	JUN	AVERAGE TO DATE			
INTAKE & DETENTION FACILITY																
Average Daily Population	275.8	303.1	287.8										288.9	N/A		
High for Month	298	335	328										320.3	N/A		
Low for Month	251	285	263										266.3	N/A		
Platte County ADP	45.0	49.8	49.6										48.1	N/A		
Butler County ADP	10	10	10										10.0	N/A		
Total Number of Bookings	984	933	803										906.7	2,720		
Felony Arrests	176	183	153										170.7	512		
Misdemeanor Arrests	604	541	494										546.3	1,639		
Felons Sentenced	11	9	4										8.0	24		
Misdemeanants Sentenced	127	126	81										111.3	334		
Held for Other Jurisdictions	66	74	71										70.3	211		
Total Conditionally Released	301	296	274										290.3	871		
Percent Conditionally Released	30.59%	31.73%	34.12%										32.1%	32.1%		
Pre-Arrestment Releases	190	180	184										184.7	554		
Court Disposition Releases	111	116	90										106.7	317		
Total of Individuals Lodged	683	637	529										616.3	1,849		
LANCASTER CORRECTIONAL FACILITY																
Average Daily Population	153.1	156.7	146.4										152.1	N/A		
High for Month	158	158	168										161.3	N/A		
Low for Month	143	149	127										139.7	N/A		
Estimated Value of Inmate Labor	\$2,704	\$2,524	\$2,843										\$2,690	\$8,070		
MEDICAL/MENTAL HEALTH SERVICES																
Referred to Jail Physician	29	45	26										33	100		
Referred to Mental Health/LRC	4	7	11										7	22		
Transferred to Emergency Room	2	4	5										4	11		

LCF COMMUNITY SERVICE PROGRAM
COUNTY ROAD LITTER PICK-UP
July 2007

NUMBER OF COUNTY ROAD CLEAN-UP TRIPS: 19

TOTAL INMATE HOURS WORKED: 441.5

TOTAL STAFF HOURS WORKED: 135.5

ROAD DISTANCE CLEARED OF LITTER: 174 miles (both sides of road)

BAGS OF LITTER REMOVED: 312

LCF COMMUNITY SERVICE PROGRAM
COUNTY ROAD LITTER PICK-UP
August 2007

NUMBER OF COUNTY ROAD CLEAN-UP TRIPS: 18

TOTAL INMATE HOURS WORKED: 397

TOTAL STAFF HOURS WORKED: 126

ROAD DISTANCE CLEARED OF LITTER: 139 miles (both sides of road)

BAGS OF LITTER REMOVED: 303

LCF COMMUNITY SERVICE PROGRAM
COUNTY ROAD LITTER PICK-UP
September 2007

NUMBER OF COUNTY ROAD CLEAN-UP TRIPS: 16

TOTAL INMATE HOURS WORKED: 257

TOTAL STAFF HOURS WORKED: 112

ROAD DISTANCE CLEARED OF LITTER: 96.5 miles (both sides of road)

BAGS OF LITTER REMOVED: 564