

LANCASTER COUNTY CORRECTIONS DEPARTMENT

605 SOUTH TENTH STREET
LINCOLN, NE 68508
(402) 441-7530
FAX: 441-8946

MICHAEL THURBER, DIRECTOR

RECEIVED

APR 11 2007

LANC. COUNTY CLERK

LANCASTER COUNTY CORRECTIONS BOARD

-AGENDA-

Thursday,

April 12, 2007

LANCASTER COUNTY CORRECTIONS BOARD

- AGENDA -

**Thursday, April 12, 2007
9:30 a.m.**

I. Approval of the January 18, 2007 Meeting

II. Population Statistics

- A. Population Comments
- B. Population Graphs-Appendix 1
- C. Monthly Statistical Report-Appendix 2 & 3

III. Department Activities

- A. Training
- B. Mental Health Jail Diversion Project
- C. Platte County Housing
- D. In House/Road Crew Projects
- E. LCF Activities
- F. Programs Division
- G. Jail Expansion & Additional Housing

V. Adjournment

Attachments.

- 1 - Jan. 18, 2007 Minutes
- 2 - Population Graphs
- 3- Monthly Status Reports
- 4- National Council Fact Sheet

Lancaster County Corrections Board
Meeting of Thursday, April 12, 2007

I. APPROVAL OF MINUTES- Jan. 18, 2007

II. POPULATION STATISTICS	<u>2006</u> Jan.-Mar. 2006	<u>2007</u> Jan.-Mar. 2007	Change
Average Daily Population	427.3	441.4	+ 3.2 %
JAIL w/ Platte County	290.6	303.1	+ 4.1 %
LCF	136.7	138.3	+ 1.2 %
Total Bookings	2,611	2,726	+ 4.2 %
Average per month	870.3	908.7	
Total Lodgings	1,698	1,756	+ 3.3 %
Average per month	566	585.3	
Platte County Inmate Housing Only			
Average per month	34.7	35.8	+ 3.1 %

Population Comments

Average daily populations with the department have risen 3.2 % compared to the same months as last year. The majority of this increase is with the Adult Detention Facility downtown.

Total lodging has slowly increased over the same time span. This refers to the number of individuals who must minimally spend one night in jail before being considered for release. During the quarter, we have continued to utilize out of county placement with Platte County with a 35 person average per day being housed.

A. Population Graph (see attached) Appendix 1

The population graph shows the month to month populations for FY06 and FY07. This graph shows the facility's rated capacity as of 1991 when the Adult Detention Facility opened.

B. Monthly Statistical Report (see attached) Appendix 2 & 3, CY06-CY07

This is a statistical report giving the average daily population for both facilities, number of bookings, types of arrests and releases, as well as medical and mental health services provided.

III. DEPARTMENT ACTIVITIES

A. TRAINING

In the period from January-March 2007, the training division conducted approximately 187 interviews with potential Correctional Officer candidates, as well as interviews for a Nurse and Clerk Typist position.

A new officer orientation program was initiated. This is a week long course for newly hired Correctional Officers. Orientation training was provided for four new officers, two nurses and a Clerk Typist.

Two full time officers completed the 12 week field training officer program. Three other officers are currently enrolled in the program.

An in-service training class, American Red Cross CPR and AED, was completed in February and the training Lieutenant completed a certification class to become a CPR instructor.

Six officers attended the Officer's Training Academy which is an 80 hour training course intended for officers who have been with the department for approximately 3-6 months.

Training staff were also involved in a career fair as a guest speaker in a "Police in Society" class, both of which occurred at UNL.

B. MENTAL HEALTH JAIL DIVERSION PROJECT

Community Mental Health currently has 32 active participants. They are trying to move some individuals into long term services to allow more into the program. Recent data has shown significant decreases in recidivism of the those who complete the program, as well as the individuals that do not successfully complete the program.

The project will soon begin using funds from a two year grant through the Bureau of Justice (MIOTCRA) as they have already exhausted funds from SAMHSA.

The Jail Diversion Project was mentioned in the National Council for Community Behavioral Healthcare fact sheet in response to the funding cuts proposed by President Bush. According to the article, Lancaster County is using MIOTCRA funds to expand its program to include individuals with Severe and Persistent Mental Illness (SMPI) who are eligible for Community Corrections Pre-Trial Services or Adult Drug Court Programs. This population has not historically been served by these programs due to a lack of adequate resources for persons with SMPI. The project plans to increase service capacity and serve approximately 65-80 offenders per year who have committed misdemeanor, as well as non-violent felony offenses.

Community Mental Health will be presenting at the Mental Health in Corrections Consortium in Kansas City this month. In March, they attended their last annual grantee meeting with the TAPA center and were able to meet Senator Chuck Hagel's staff regarding support for LB669. LB669 asks for a Nebraska Behavioral Health Jail Diversion Planning and Coordination Advisory Council.

C. PLATTE COUNTY HOUSING

Lancaster County continues to house inmates in Platte County due to overcrowding. Between the months of January-March, 2007, we maintained an average of 35.8 inmates. During this same time period, 20 round trip transports were conducted, moving 162 inmates between the two facilities. This required approximately 78 hours of staff time to complete.

In addition to Platte County duties, the transport division transported 3,283 inmates to court, doctor's appointments or other locations. This required approximately 1,864 staffing hours.

D. WORK CREW PROJECTS

For the past three months, inmate work crew's main project has been the demolition of the Courthouse Plaza building. During demolition, the crews have removed all electrical, mechanical and lighting from the building, along with the internal walls and duct work. The crew also moved systems furniture from this building to the County-City Building 3rd floor storage. This project should be completed by mid April.

During this demolition project, our inmate crew supervisor, Steve Swanson, with the help of the inmates, has been salvaging the scrap metal. To date, they have collected \$3,900 in revenue for the department.

In February 2007, crews moved the Human Services Department. Since January 2007, inmate work crews have provided approximately 2,026 hours of labor, excluding their supervisory staff hours.

E. LCF ACTIVITIES

LCF is currently in the process of applying for another mini-grant with the Health Dept. for county road litter pick up. The grant is expected to be approximately \$4,000. We are attempting to recruit an On-call officer to supervise this summer project.

Average daily number of work release inmates at LCF:

January-38
February-40
March-33

F. PROGRAMS DIVISION

The Correctional Specialists coordinated an average of 39 evaluations per month with the consulting psychiatrist in the months of January, February, and March 2007. An average of 4 inmates per month were placed into Emergency Protective Custody and transferred with a jail hold to the Crisis Center or the Lincoln Regional Center, due to meeting the criteria of mental illness.

Correctional Specialists and the Chaplain coordinated an average of 166 educational, self-help, and religious programs per month during this quarter. This number represents programs offered at both facilities. The programs staff brought in a volunteer during the month of March to provide tax preparation assistance to inmates who requested help in filing tax returns. A total of 14 inmates used this service. (IDF-9, LCF-5)

The Work Release Coordinator reviewed an average of 131 court ordered release applications per month from January-March, 2007. This number reflects both County and District Court applications. The average number of individuals on work release during these months was 37.

The Intake & Detention Facility continues to experience an increasing demand for professional contact visitation. An average of 25 professional contact visits per month were scheduled for inmates during this past quarter.

G. JAIL EXPANSION & ADDITIONAL HOUSING

During this quarter, the department has assisted in the gathering of potential expansion sites. Discussions are currently underway with the Building and Grounds Director to finalize an acceptable location for the County Board.

Plans for additional out-of-county housing of offenders is being reviewed. The Board of Commissioners will be receiving a boarding contract for additional housing of offenders in the next few weeks.

**MINUTES
BOARD OF CORRECTIONS
QUARTERLY MEETING
COUNTY-CITY BUILDING, ROOM 113
THURSDAY, JANUARY 18, 2007
9:00 A.M.**

Commissioners Present: Bernie Heier, Chair
Bob Workman, Vice Chair
Ray Stevens
Deb Schorr

Commissioners Absent: Larry Hudkins

Others Present: Mike Thurber, Corrections Director
Kerry Eagan, Chief Administrative Officer
Gwen Thorpe, Deputy Chief Administrative Officer
Dan Nolte, County Clerk
Ann Taylor, County Clerk's Office

The Chair opened the meeting at 9:03 a.m.

AGENDA ITEM

**1 APPROVAL OF BOARD OF CORRECTIONS MINUTES OF
THURSDAY, SEPTEMBER 21, 2006**

MOTION: Stevens moved and Schorr seconded approval of the Board of Corrections Meeting minutes dated September 21, 2006. Workman, Schorr, Stevens and Heier voted aye. Motion carried.

2 POPULATION STATISTICS

A. Population Comments

Mike Thurber, Corrections Director, reported a slight decrease in population from the past quarter, compared to the same time frame in 2005. Total bookings for the same period increased 7.6%.

B. Population Graphs

See agenda packet.

C. Population Statistical Report

See agenda packet.

3 DEPARTMENT ACTIVITIES

A. Training

Thurber reported on the number of interviews held for Correctional Officer, Nurse I and Clerk Typist II positions and on orientation and in-service training.

Thurber said staff assisted with fingerprinting for the Identi-Kid Program at the Nebraska State Fair and provided assistance to the Hall and Scottsbluff County Corrections Departments (the two counties are working toward construction of new facilities).

B. Mental Health Jail Diversion Project

Thurber said the Mental Health Jail Diversion Project has 27 active participants (131 individuals have been diverted since the beginning of the program). Work with the Drug Court and Community Corrections continues.

C. Platte County Housing

Thurber said Lancaster County continues to house inmates in Platte County, due to overcrowding (population averages 34).

D. In-House/Road Crew Projects

Thurber said work crews moved furniture for various departments and started demolition work on the Courthouse Plaza Building. Work crews also participated in county road litter clean-up.

E. Lancaster Correctional Facility (LCF) Activities

Thurber said LCF was inspected by the Bureau of Fire Prevention in August, 2006 and was found to be in compliance. LCF was also found to be in compliance when Nebraska Jail Standards conducted its annual inspection on August 31, 2006. The Lincoln Fire Department conducted a walk-through inspection in September, 2006.

Thurber said LCF staff are administering drug tests. He said approximately 20% of new admissions test positive for some type of substance.

Thurber also reported on work release numbers (see agenda packet).

F. Programs Division

Thurber reported the following:

- ▶ There were more than 500 counseling contacts this quarter. Evaluations with the consulting psychiatrist averaged 30 per month for the same period.
- ▶ An average of 18 professional visits per month were scheduled for inmates for the period of August-December, 2006.
- ▶ The Good News Jail & Prison Ministries appointed Chaplain Tom Beatty to serve Lancaster County Corrections.

G. Pre-Architectural Comments

Thurber noted that the Board has received the 2006 Pre-Architectural Jail Study for the Lancaster County Department of Corrections (a copy is on file in the County Clerk's Office).

Stevens asked whether the consultants looked at contracting to have the jail built to the County's specifications with lease back to the County, which would eliminate the need for bonding.

Thurber said no, but said it could be part of the Request for Proposals (RFP).

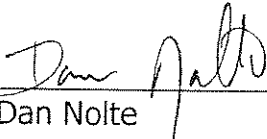
Schorr noted that the Board has received inquiries from other counties.

Thurber said he would be glad to work with other counties, if there are enough beds.

NOTE: A Special Staff Meeting has been scheduled for Tuesday, January 23, 2007 to discuss a new correctional facility and funding options.

4 ADJOURNMENT

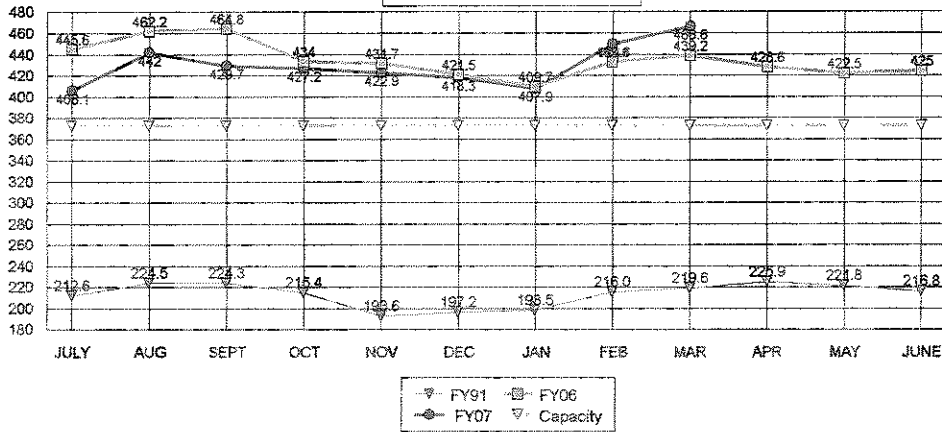
MOTION: Workman moved and Stevens seconded to adjourn the meeting at 9:32 a.m. Workman, Stevens, Heier and Schorr voted aye. Motion carried.



Dan Nolte
Lancaster County Clerk



**TOTAL POPULATIONS
 FY91, FY06, FY07**

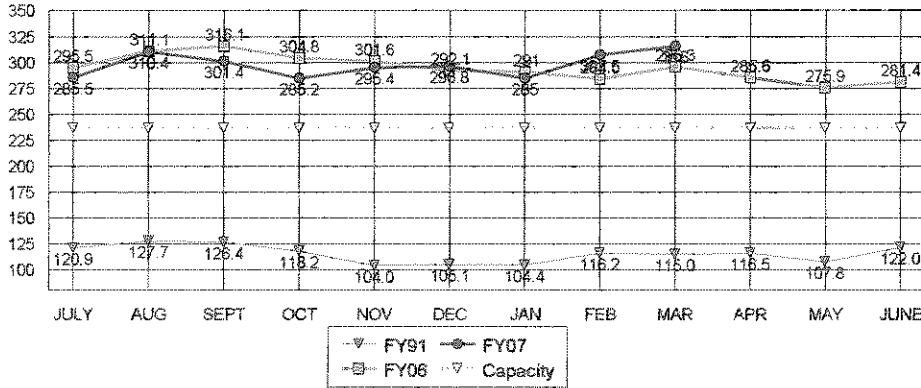


AVERAGES

FY07 TO DATE	430.0
FY06 SAME PERIOD	438.0
FY06 TO YR-END	434.8

-1.8% Change in FY07 to date over same period last year
-1.1% Change in FY07 to date over FY06 average to year-end

**JAIL-PLATTE CO. POPULATION
 FY91, FY06, FY07**

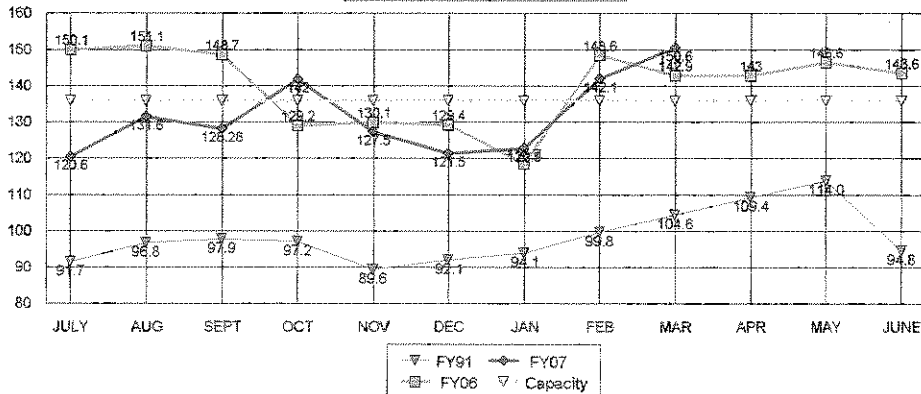


AVERAGES

FY07 TO DATE	298.1
FY06 SAME PERIOD	299.2
FY06 TO YR-END	294.7

-0.4% Change in FY07 to date over same period last year
1.2% Change in FY07 to date over FY06 average to year-end

**LCF-ONLY POPULATION
 FY91, FY06, FY07**



AVERAGES

FY07 TO DATE	131.9
FY06 SAME PERIOD	138.8
FY06 TO YR-END	140.2

-4.9% Change in FY07 to date over same period last year
-5.9% Change in FY07 to date over FY06 average to year-end

**LANCASTER COUNTY CORRECTIONS DEPARTMENT
MONTHLY STATUS REPORT**

CALENDAR YEAR 2006

06cal

	2006												AVERAGE	TOTAL
	JAN	FEB	MAR	APR	MAY	JUN	JUL	AUG	SEPT	OCT	NOV	DEC	TO DATE	TO DATE
INTAKE & DETENTION FACILITY														
Average Daily Population	255.8	249.8	262.3	252.2	241.5	247.1	252.1	279.9	266.5	250.9	261.2	262.4	257	N/A
High for Month	277	262	284	269	277	263	300	301	281	279	281	296	281	N/A
Low for Month	239	229	247	238	225	233	225	263	253	226	242	232	238	N/A
Platte County ADP	35	35	34	33	34	34	33	33	35	34	34	34	34	N/A
Total Number of Bookings	913	844	854	796	780	768	828	955	877	835	740	832	835	10,022
New Bookings	7	230	205	208	185	201	240	294	260	241	193	264	211	2,528
Felony Arrests	156	161	150	138	152	130	171	163	152	143	131	174	152	1,821
Misdemeanor Arrests	546	460	506	446	464	423	501	586	528	478	447	506	491	5,891
Domestic Violence Arrests	29	38	45	38	40	51	55	45	46	40	43	51	43	521
DWI Arrests	96	94	94	107	93	114	81	135	129	147	90	110	108	1,290
Felons Sentenced	6	5	16	5	11	4	10	6	5	6	6	3	7	83
Misdemeanants Sentenced	131	126	111	134	100	143	101	120	124	141	101	96	119	1,428
Held for Other Jurisdictions	74	92	71	73	53	68	156	80	68	67	55	53	76	910
Total Conditionally Released	189	170	282	253	276	240	296	320	320	264	250	301	263	3,161
Percent Conditionally Released	35.49%	36.37%	33.02%	31.78%	35.38%	31.25%	35.75%	33.51%	36.49%	31.62%	33.78%	36.18%	34%	N/A
Pre-Arrestment Releases	189	170	178	191	189	177	224	236	245	196	188	221	200	2,404
Court Disposition Releases	135	137	104	62	87	63	71	84	75	68	62	80	86	1,028
Total of Individuals Lodged	589	537	572	543	504	528	532	635	557	571	490	531	549	6,589

LANCASTER CORRECTIONAL FACILITY														
Average Daily Population	118.7	148.6	142.9	143.0	146.6	143.6	120.6	131.6	128.8	142.0	127.5	121.5	135	N/A
High for Month	133	157	154	156	156	151	141	139	148	152	146	138	148	N/A
Low for Month	100	131	131	125	134	137	106	123	111	122	117	105	120	N/A
Estimated Value of Inmate Labor @ \$5.15	\$2,582	\$2,971	\$3,963	\$4,195	\$6,136	\$3,174	\$2,970	\$2,776	\$1,953	\$3,348	\$2,916	\$2,754	\$3,311	\$39,738

MEDICAL/MENTAL HEALTH SERVICES														
Referred to Jail Physician	101	80	82	72	65	64	66	96	86	91	61	68	78	932
Referred to Mental Health/LRC	1	7	3	6	3	5	3	4	6	2	3	4	4	47
Transferred to Emergency Room	4	2	5	4	2	4	8	3	8	3	5	4	4	52

**LANCASTER COUNTY CORRECTIONS DEPARTMENT
MONTHLY STATUS REPORT**

CALENDAR YEAR 2007

07cal

	2007			AVERAGE TO DATE	TOTAL TO DATE
	JAN	FEB	MAR		
INTAKE & DETENTION FACILITY					
Average Daily Population	251.5	273.2	276.5	267	N/A
High for Month	267	299	295	287	N/A
Low for Month	238	255	254	249	N/A
Platte County ADP	34	34	40	36	N/A
Total Number of Bookings	854	862	1010	909	2,726
New Bookings	241	230	256	242	727
Felony Arrests	137	129	167	144	433
Misdemeanor Arrests	483	546	673	567	1,702
Domestic Violence Arrests	47	39	49	45	135
DWI Arrests	143	137	130	137	410
Felons Sentenced	5	8	8	7	21
Misdemeanants Sentenced	166	138	116	140	420
Held for Other Jurisdictions	63	41	46	50	150
Total Conditionally Released	293	313	364	323	970
Percent Conditionally Released	34.31%	36.31%	36.04%	36%	N/A
Pre-Arrestment Releases	210	193	196	200	599
Court Disposition Releases	83	120	168	124	371
Total of Individuals Lodged	561	549	646	585	1,756

LANCASTER CORRECTIONAL FACILITY					
Average Daily Population	122.9	142.1	150.0	138	N/A
High for Month	139	156	156	150	N/A
Low for Month	111	132	137	127	N/A
Estimated Value of Inmate Labor @ \$5.15	\$4,398	\$4,187	\$3,414	\$4,000	\$12,000

MEDICAL/MENTAL HEALTH SERVICES					
Referred to Jail Physician	60	41	48	50	149
Referred to Mental Health/LRC	5	5	3	4	13
Transferred to Emergency Room	6	7	2	5	15

Mentally Ill Offender Treatment and Crime Reduction Act: FY 2008 Funding Recommended at \$50 Million

National Council Fact Sheet

Benefits of Program

Recently, *60 Minutes* exposed the gruesome death of Timothy Souders, a young man with bipolar disorder who died of dehydration while strapped for days to a cement slab—he was in prison for shoplifting. Correctional officers report that they are overwhelmed and unprepared to address the needs of people with serious mental illness. The human and fiscal costs of arresting and detaining hundreds of thousands of non-violent offenders with serious mental health needs has reached a breaking point. The Mentally Ill Offender Treatment and Crime Reduction Act (MIOTCRA) provides important grants for the diversion and treatment of non-violent, mentally ill offenders. Because of MIOTCRA, people like Timothy are diverted by law enforcement, prosecutors or courts into supervised treatment programs. These diversion programs contribute to public safety by lowering the chances that people with mental illness will re-offend.

Funding Status

Congress authorized the program at \$50 million or “such sums” necessary to carry out the intent of the statute. MIOTCRA received \$5 million in FY 2006 and FY 2007. The competition for these funds was so intense that only 11% of the 250 applications received funding for FY 2006. Many worthy programs were left unfunded. Of the 27 applications that received funding, National Council members are involved in 11 of the programs. Grants have not yet been awarded for FY 2007.

Examples of Programs Funded

MIOTCRA funded Allegheny County, Pennsylvania to design a Crisis Intervention Team (CIT) program which they will pilot in Pittsburgh and then use as a model for police and sheriffs’ departments throughout the county. CIT is a model policing project developed in Memphis, Tennessee that has been adopted in communities around the country. CIT reduces injuries to officers and civilians during encounters with people with serious mental illness, reduces arrest rates of people with mental illness, and is more likely to connect them with treatment than a traditional policing program.

Lancaster County, Nebraska is using MIOTCRA funds to expand its jail diversion program to include individuals with severe and persistent mental illnesses (SPMI) who are eligible for Community Corrections’ Pre-Trial Services or Adult Drug Court Programs. This population has not historically been served by these programs due to a lack of adequate resources for persons with SPMI. The grantee plans to increase service capacity and serve approximately 65-80 offenders per year who have committed misdemeanor, as well as non-violent felony offenses.

Questions? Call Tammy Seltzer at 301.984.6200, ext. 234 or email TammyS@nccbh.org.

The National Council for Community Behavioral Healthcare is a not-for-profit, 501(c)(3) association of 1,300 behavioral healthcare organizations. Our members offer medical, social, psychological, and rehabilitation services in community settings to help people with mental illnesses and addiction disorders recover and lead productive lives. Medicaid pays for up to 75 percent of the services our members provide to six million adults, children, and families in communities across the country.



**NATIONAL COUNCIL
FOR COMMUNITY BEHAVIORAL HEALTHCARE**