

# LANCASTER COUNTY CORRECTIONS DEPARTMENT

---

605 SOUTH TENTH STREET  
LINCOLN, NE 68508  
(402) 441-7530  
FAX: 441-8946

MICHAEL THURBER, DIRECTOR

RECEIVED

SEP 21 2006

LANC. COUNTY CLERK

## LANCASTER COUNTY CORRECTIONS BOARD

-AGENDA-

Thursday, September 21, 2006

**LANCASTER COUNTY CORRECTIONS BOARD**

**- AGENDA -**

**Thursday, September 21, 2006  
8:30 a.m.**

**I. Approval of the May 18, 2006 Meeting**

**II. Population Statistics**

- A. Population Comments
- B. Population Graphs-Appendix 1
- C. Monthly Statistical Report-Appendix 2 & 3

**III. Department Activities**

- A. Training
- B. Mental Health Jail Diversion Project
- C. Platte County Housing
- D. In House/Road Crew Projects
- E. Programs Division Update
- F. New Business
- G. Pre-Architectural Comments

**V. Adjournment**

Attachments.

- 1 - May 18, 2006 Minutes
- 2 - Population Graphs
- 3- Monthly Status Reports
- 4- LCF Community Service Program



### **III. DEPARTMENT ACTIVITIES**

#### **A. TRAINING**

1. Two in-service training sessions were held for all security staff and selected support staff. One session covered emergency procedures and the other was regarding suicide awareness and substance abuse.
2. Our training Lieutenant and two program staff members attended a conference on suicide prevention in Kansas City.
3. Orientation training was conducted for new four full time correctional officers, four on-call officers, four nurses and two mental health workers. An on-call academy was held for all part-time officers. This provided an additional 72 hours of training.
4. Our training officers are currently preparing for a two week academy for eight full-time probationary officers to begin on September 21.

#### **B. MENTAL HEALTH JAIL DIVERSION PROJECT**

The Community Mental Health Program received word regarding their future. They were granted a Bureau of Justice expansion grant for an additional two years. The grant will fund most of the program and the County Board has been approached to fund the remaining portion. The expansion grant will incorporate working with the Drug Court as well as Community Corrections in the diversion process. The program has had some success with diverting low level felonies. Kimberly Mundil will continue to work with the Legislative process to pursue on-going program funding.

The Jail Diversion Project is again, fully staffed. New Intensive Case Managers, Renee Felder and Deb Van Lant, are keeping in contact with clients, as well as getting them to their appointments, keeping their court dates, and receiving their medications. We currently have 19 active clients.

#### **C. PLATTE COUNTY HOUSING**

Platte County inmate housing has continued the same trend between the months of April-July, 2006. We have maintained an average of 34 inmates each month.. The transport unit completed 20 round trip transfers, moving 81 inmates to Platte County and returning 61 to Lancaster County.

#### **D. IN-HOUSE & ROAD CREW PROJECTS**

1. Our maintenance staff and work crews continued to assist the Health Dept. with moving during the months of April, May and June.

2. In May, crews removed an old tire house at the shooting range for the Lancaster County Sheriff's Department.
3. In June and July, staff and crew members assisted the Election Commissioner for several days hauling tables. They also picked up surplus property for the Purchasing Department for the county surplus sale held in July. Lastly, the crews assisted with collections of the annual Food Bank Drive.
4. Our LCF Community Service Program has been utilized for the County road clean up. Attachments are provided showing the hours worked and the road distance coverages.
5. Maintenance staff have been focusing on the wiring and installation of the new security cameras at LCF. They have also been installing the pan tilt zoom poles on the exterior of the building.

#### **E. PROGRAMS DIVISION**

The Correctional Specialists in the Programs Division averaged 384 inmate counseling contacts per month during May-July, 2006. They coordinated an average of 27 evaluations per month with the consulting psychiatrist during the same period. An average of 3 inmates per month were placed into Emergency Protective Custody and transferred to the Crisis Center or Lincoln Regional Center with a jail hold, due to meeting the criteria of mental illness and being a danger to oneself or others.

In addition to attending to the mental health needs of inmates, the staff provide support and assistance in coping with confinement. Our Correctional Specialists coordinated an average of 143 educational, self-help, and religious programs. This number represents programs offered at both the downtown and airpark facilities.

The Work Release Coordinator reviewed an average of 94 court ordered release applications per month in June and July, 2006. This number reflects both District and County Court applications. The number of individuals on work release has been approximately 50 during these months. A Work Release Inmate Handbook is in the process of being developed to answer commonly asked court ordered release related questions and provide additional information regarding behavioral expectations for individuals on court ordered release status.

Correctional Specialists completed an average of 131 classification reviews in May, June, and July. An average of 25 Special Management Housing Reviews were conducted in the same time frame for inmates assigned to more restrictive/special housing units.

Additionally, CS staff processed an average of 21 contact visitation applications for inmates eligible to have such visitation with family or friends. An average of 8 professional contacts visits per month were also scheduled for those inmates during the months of May-July, 2006.

**F. NEW BUSINESS**

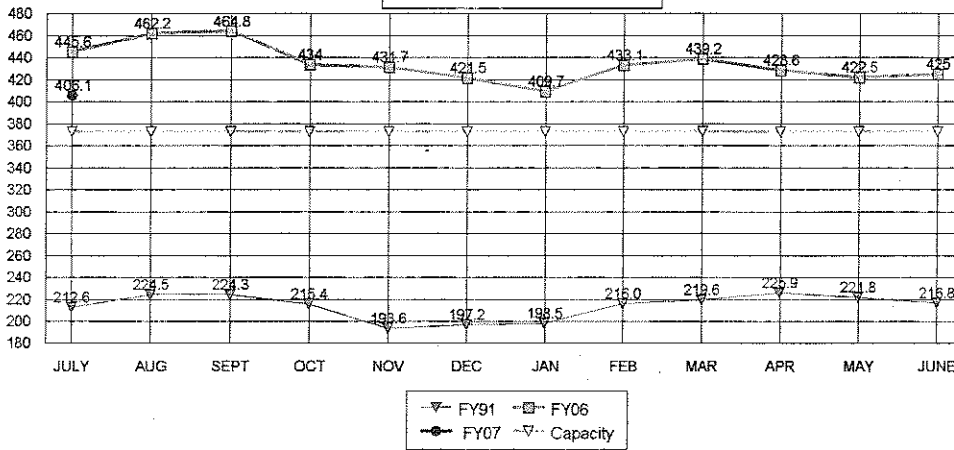
1. LCF was inspected by the Bureau of Fire Prevention on August 3, 2006, and found in compliance.
2. The Lincoln Fire Department conducted a walk-through inspection on September 8. This was mainly to familiarize their local fire station staff with the facility, done on an annual basis.

**G. PRE-ARCHITECTURAL PLAN COMMENTS**

The Pre-Architectural Planning Team is on schedule to present a draft report to the Department of Corrections and the Lancaster County Board of Commissioners by mid-October. The content of this report will include an overview of the study process, an assessment of the Adult Detention Facility (downtown jail), growth trends, and a projected capacity through the year 2025. It will also include an analysis of the existing facilities, a detailed architectural program to meet future projections, and an operational cost assessment. The draft report will summarize the options for meeting future needs and make recommendations for the location and configuration of the new facility. Finally, the report will include estimated costs, phasing considerations and the implementation schedule.

To date, the study has identified the need for an additional 400 beds or a total capacity of 800 beds with the expansion capacity up to 1,000 beds and a programming total of 286,600 GSF. Five potential sites including the existing jail site have been identified and are currently being evaluated by the study team and the jail steering committee. Concept diagrams, cost estimates and implementation strategies are still being completed. The draft report will be presented to the County Board in October for their review and input.

**TOTAL POPULATIONS  
 FY91, FY06, FY07**

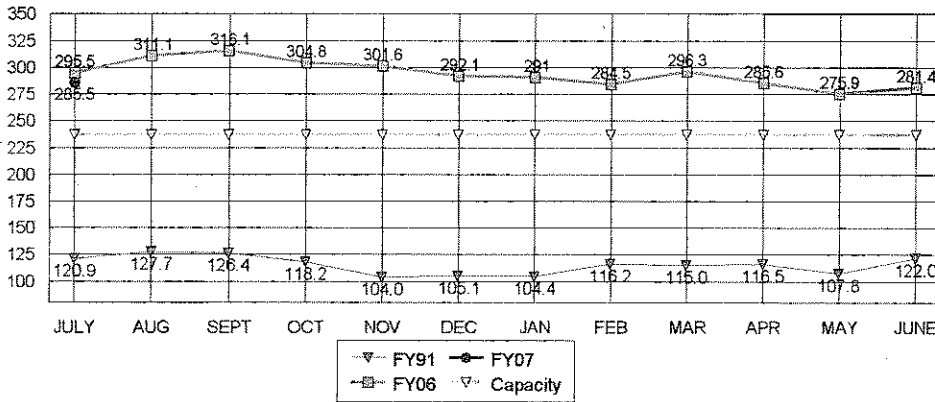


AVERAGES

FY07 TO DATE	406.1
FY06 SAME PERIOD	445.6
FY06 TO YR-END	434.8

-8.9%	Change in FY07 to date over same period last year
-6.6%	Change in FY07 to date over FY06 average to year-end

**JAIL-PLATTE CO. POPULATION  
 FY91, FY06, FY07**

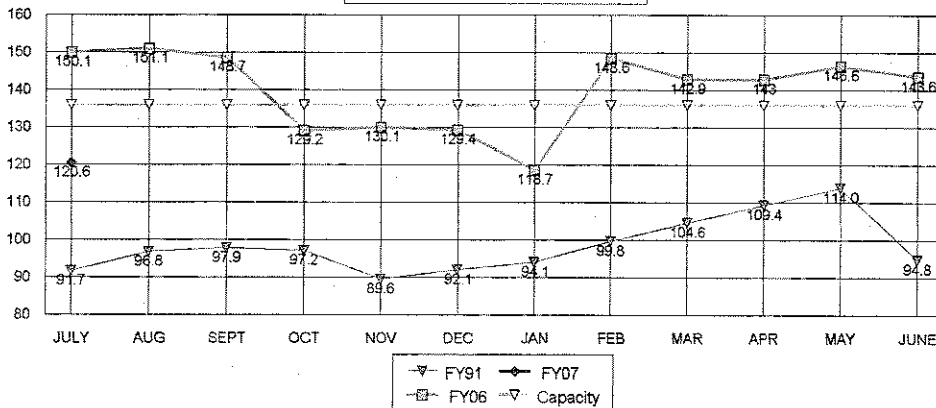


AVERAGES

FY07 TO DATE	285.5
FY06 SAME PERIOD	295.5
FY06 TO YR-END	294.7

-3.4%	Change in FY07 to date over same period last year
-3.1%	Change in FY07 to date over FY06 average to year-end

**LCF-ONLY POPULATION  
 FY91, FY06, FY07**



AVERAGES

FY07 TO DATE	120.6
FY06 SAME PERIOD	150.1
FY06 TO YR-END	140.2

-19.7%	Change in FY07 to date over same period last year
-14.0%	Change in FY07 to date over FY06 average to year-end

**LANCASTER COUNTY CORRECTIONS DEPARTMENT  
MONTHLY STATUS REPORT**

**CALENDAR YEAR 2006**

06cal

2006

INTAKE & DETENTION FACILITY	JAN	FEB	MAR	APR	MAY	JUN	JUL	AVERAGE TO DATE	TOTAL TO DATE
Average Daily Population	255.8	249.8	262.3	252.2	241.5	247.1	252.1	252	N/A
High for Month	277	262	284	269	277	263	300	276	N/A
Low for Month	239	229	247	238	225	233	225	234	N/A
Platte County ADP	35	35	34	33	34	34	33	34	N/A
Total Number of Bookings	913	863	854	796	780	768	823	828	5,797
New Bookings	7	230	205	208	185	201	240	182	1,276
Felony Arrests	156	161	150	138	152	130	171	151	1,058
Misdemeanor Arrests	546	460	506	446	464	423	501	478	3,346
Domestic Violence Arrests	29	38	45	38	40	51	55	42	296
DWI Arrests	96	94	94	107	93	114	81	97	679
Felons Sentenced	6	5	16	5	11	4	10	8	57
Misdemeanants Sentenced	131	126	111	134	100	143	101	121	846
Held for Other Jurisdictions	74	92	71	73	53	68	156	84	587
Total Conditionally Released	189	170	282	253	276	240	296	244	1,706
Percent Conditionally Released	35.49%	36.37%	33.02%	31.78%	35.38%	31.25%	35.75%	34%	N/A
Pre-Arrestment Releases	189	170	178	191	189	177	224	188	1,318
Court Disposition Releases	135	137	104	62	87	63	71	94	659
Total of Individuals Lodged	589	537	572	543	504	528	532	544	3,805

**LANCASTER CORRECTIONAL FACILITY**

Average Daily Population	118.7	148.6	142.9	143.0	146.6	143.6	120.6	138	N/A
High for Month	133	157	154	156	156	151	141	150	N/A
Low for Month	100	131	131	125	134	137	106	123	N/A
Estimated Value of Inmate Labor @ \$5.15	\$2,582	\$2,971	\$3,963	\$4,195	\$6,136	\$3,174	\$2,970	\$3,713	\$25,991

**MEDICAL/MENTAL HEALTH SERVICES**

Referred to Jail Physician	101	80	82	72	65	64	66	76	530
Referred to Mental Health/LRC	1	7	3	6	3	5	3	4	28
Transferred to Emergency Room	4	2	5	4	2	4	8	4	29



LANCASTER COUNTY CORRECTIONS DEPARTMENT  
MONTHLY STATUS REPORT

CALENDAR YEAR 2005

2005

	JAN	FEB	MAR	APR	MAY	JUN	JUL	AUG	SEPT	OCT	NOV	DEC	AVERAGE TO DATE	TOTAL TO DATE
<b>INTAKE &amp; DETENTION FACILITY</b>														
Average Daily Population	252.4	258.7	261.7	260.4	283.5	284.7	295.5	311.1	285.7	268.5	266.0	257.1	274	N/A
High for Month	274	271	276	276	321	303	315	331	337	285	289	276	296	N/A
Low for Month	226	245	246	242	261	270	270	298	251	247	249	241	254	N/A
Platte County ADP	0	0	0	0	0	0	0	0	30	36	36	35	34	N/A
Total Number of Bookings	694	824	980	1007	1019	978	940	920	745	758	745	748	863	10,358
New Bookings	219	260	241	276	251	275	245	250	187	215	216	208	237	2,843
Felony Arrests	109	122	151	152	157	145	170	168	149	133	161	136	146	1,753
Misdemeanor Arrests	427	542	647	675	679	651	593	606	447	447	402	438	546	6,554
Domestic Violence Arrests	40	28	31	46	37	38	49	29	39	29	39	39	37	444
DWI Arrests	71	112	95	100	106	88	101	99	87	94	86	74	93	1,113
Felons Sentenced	11	2	9	8	5	9	14	6	8	7	11	4	8	94
Misdemeanants Sentenced	88	96	102	101	115	120	103	86	88	111	119	94	102	1,223
Held for Other Jurisdictions	66	63	79	67	66	78	60	54	53	60	52	70	70	768
Total Conditionally Released	257	321	350	383	338	340	314	331	235	234	258	250	301	3,611
Percent Conditionally Released	36.66%	38.90%	35.43%	38.49%	33.07%	34.76%	33.40%	35.98%	31.54%	30.87%	34.63%	33.69%	35%	N/A
Pre-Arrestment Releases	175	179	186	198	210	203	225	241	178	160	173	167	191	2,295
Court Disposition Releases	82	142	164	185	128	136	89	90	57	74	85	86	110	1,318
Total of Individuals Lodged	444	504	638	612	684	638	626	589	510	524	487	492	562	6,748

LANCASTER CORRECTIONAL FACILITY

Average Daily Population	109.6	118.8	125.7	126.3	129.1	148.0	150.1	151.1	148.7	129.2	130.1	129.4	133	N/A
High for Month	125	134	131	136	147	158	160	161	161	142	146	149	146	N/A
Low for Month	97	107	117	115	113	142	132	138	134	119	117	104	120	N/A
Estimated Value of Inmate Labor @ \$5.15	\$3,765	\$2,537	\$1,581	\$2,624	\$2,341	\$3,064	\$2,652	\$2,796	\$2,915	\$3,265	\$2,086	\$2,005	\$2,636	\$31,631

MEDICAL/MENTAL HEALTH SERVICES

Referred to Jail Physician	118	147	85	58	56	52	76	53	97	81	99	82	84	1,004
Referred to Mental Health/LRC	3	8	9	6	5	7	3	2	4	10	7	4	6	68
Transferred to Emergency Room	4	3	2	2	3	1	2	1	3	4	5	1	3	31

**LCF COMMUNITY SERVICE PROGRAM**  
**COUNTY ROAD LITTER PICK-UP**  
**June, 2006**

NUMBER OF COUNTY ROAD CLEAN-UP TRIPS: 21

TOTAL INMATE HOURS WORKED: 409

TOTAL STAFF HOURS WORKED: 162

ROAD DISTANCE CLEARED OF LITTER: 102 miles (both sides of road)

BAGS OF LITTER REMOVED: 304

**LOCATIONS:**

SW 29<sup>th</sup> , Sprague Rd N. To Hallam Rd  
Saltillo Rd, S 98<sup>th</sup> to S 190<sup>th</sup>  
W Stagecoach Rd, SW 72<sup>nd</sup> to SW 142<sup>nd</sup>  
W Van Dorn St, NW 84<sup>th</sup> to NW 140<sup>th</sup>  
S 98<sup>th</sup>, Firth Rd to Panama Rd  
NW 84<sup>th</sup>, W Waverly Rd to W Superior St  
NW 112<sup>th</sup> , N Adams to N "O" St  
Havelock Ave., N 98<sup>th</sup> to 190<sup>th</sup>  
SW 114<sup>th</sup> , W Panama Rd to Gage Rd SW  
SW 56<sup>th</sup> , W A to W Rokeby Rd  
SW 14<sup>th</sup>, W Sprague to W Princeton  
SW 72<sup>nd</sup> , W Sprague to W Pella  
W Davey Rd, N 14<sup>th</sup> to NW 70<sup>th</sup>  
W Holdredge, NW 56<sup>th</sup> to NW 140<sup>th</sup>  
S 25<sup>th</sup>, W Roca to W Panama  
S 96<sup>th</sup>, Martell Rd to Princeton Rd  
Olive Creek Rd, S 12<sup>th</sup> to S 96<sup>th</sup>  
A st, N 112<sup>th</sup> to N 190<sup>th</sup>  
West A st, NW 140<sup>th</sup> to NW 56<sup>th</sup>  
SW 42<sup>nd</sup> , W Sprague Rd to W Pella Rd  
S 25<sup>th</sup>, Gage Rd to Princeton Rd

**LCF COMMUNITY SERVICE PROGRAM**  
**COUNTY ROAD LITTER PICK-UP**  
**July, 2006**

**NUMBER OF COUNTY ROAD CLEAN-UP TRIPS: 13**

**TOTAL INMATE HOURS WORKED: 284**

**TOTAL STAFF HOURS WORKED: 88.5**

**ROAD DISTANCE CLEARED OF LITTER: 54 miles (both sides of road)**

**BAGS OF LITTER REMOVED: 190**

**LOCATIONS:**

Alvo Rd, N112th to N 190<sup>th</sup>  
Bluff Rd, N148th to N 170<sup>th</sup>  
N 162<sup>nd</sup>, Wavery Rd to Davey Rd  
N 176<sup>th</sup>, Bluff Rd to Havelock Ave  
N Bluff Rd, N176th to N 190<sup>th</sup>  
Bennet Rd, N 182<sup>nd</sup> to N 134<sup>th</sup>  
N 27<sup>th</sup>, W Alvo Rd to W Waverly Rd  
Bluff Rd, N 27<sup>th</sup> to N 98<sup>th</sup>  
W Wittstruck Rd, Hwy 77 south to SW 98<sup>th</sup>  
Pine Lake Rd, S 110<sup>th</sup> to S 190<sup>th</sup>  
W Wittstruck Rd, SW 142<sup>nd</sup> to SW 2<sup>nd</sup>  
Saltillo Rd, S 120<sup>th</sup> to S 190<sup>th</sup>  
W Clair Ave & W Old Cheney Rd, SW 14<sup>th</sup> to SW 114