

LANCASTER COUNTY CORRECTIONS BOARD

- AGENDA -

**Thursday, May 12, 2005
9:00 a.m.**

I. Approval of the February 17, 2005 Meeting

II. Population Statistics

- A. Population Comments
- B. Population Graphs
- C. Monthly Statistical Report

III. Department Activities

- A. Good News Jail & Prison Ministry
- B.. Mental Health Jail Diversion Program
- C. Work Seek Program
- D. In-House Projects
- E. New Business

IV. Adjournment

Attachments

- 1 - February 17, 2005 Minutes
- 2 - Population Graphs
- 3- Monthly Status Report

Lancaster County Corrections Board

Meeting of Thursday, May 12, 2005

I. APPROVAL OF MINUTES- February 17, 2005

II. POPULATION STATISTICS	2004 Jan/Feb/March	2005 Jan/Feb/March	Change
Average Daily Population	379.1	375.6	-1.0 %
JAIL	265.6	257.6	-3.0 %
LCF	113.5	118.0	+4.0 %
Total Bookings	2,395	2,498	+4.0%
Average per month	798	833	
Total Lodgings	1,529	1,586	+4.0%
Average per month	510	529	

Population Comments

- A. Comparing the department's overall average daily populations from the first quarter of 2005 to the first quarter of 2004, we are showing a small decrease of 1%.

As we progress through 2005, our downtown facility population remains in the high average of 250-260 daily. Bookings have increased 4% this past quarter compared to the same time frame as last year.

- B. Population Graph (see attached)

The population graph shows the month to month population totals for FY04 and FY05. This graph has the facility's rated capacity of fiscal year 1991 when the Adult Detention Facility opened.

- C. Monthly Statistical Report (see attached)

The statistical report gives a breakdown of total monthly bookings, showing a variety of offenders the department receives. Felony and misdemeanor arrests long with the sentencing breakdowns of different classes of the inmates are depicted.

III. DEPARTMENT ACTIVITIES

A. GOOD NEWS JAIL & PRISON MINISTRY

During this quarter, Rev. Dan Morgan has organized another 250 group Bible study sessions. His goal is have at least three study sessions available per week in every pod, including LCF. This would include Sunday services, a Wednesday priest and Thursday as a study day. Rev. Morgan recently recruited a volunteer for the A yard for Thursday afternoons and a husband/wife team to teach on Friday evenings. Two out of the three services have doubled in attendance, showing increased interest in this program. Inmates have completed over 1,400 individual Bible study sessions this quarter. Five inmates have completed the study program. Rev. Morgan has currently recruited a second team of fourteen individuals to grade the lessons.

B. MENTAL HEALTH JAIL DIVERSION PROJECT

Community Mental Health is starting a new program called Seeking Safety. This is a group for the women of domestic violence, substance abuse and post traumatic stress disorder. There are 24 currently active in this program. Of the 24 women, three are in transition, one is at the Norfolk Regional Center on a mental health board commitment, and one is at a Work Ethic Camp completing a probation requirement for Seward County.

The diversion program has diverted 71 individuals to date. Of those, 21 have been terminated for non-compliance, 16 have completed the program successfully, two are deceased, and the others are considered inactive due to moving out of state or withdrawing from the program.

Starting in May, they will have another series of focus groups and training which will be provided by Corrections staff, as well as judges and attorneys.

C. WORK SEEK PROGRAM

Our Programs Coordinator from LCF has contacted District Court Judges requesting a major revision to the employment seeking process for inmates. Correctional Specialist, Connie Osborn, presented a newly designed pre-employment form for the purpose of gaining knowledge about each inmate's educational background, job skills, and criminal history. This information will then be used to make a recommendation to the courts when an inmate requests to seek employment by court orders. The judges agreed that the form will provide us with the ability to make more informed decisions regarding employment and recommendations while allowing inmates an increased opportunity to find gainful employment while incarcerated.

D. IN-HOUSE PROJECTS

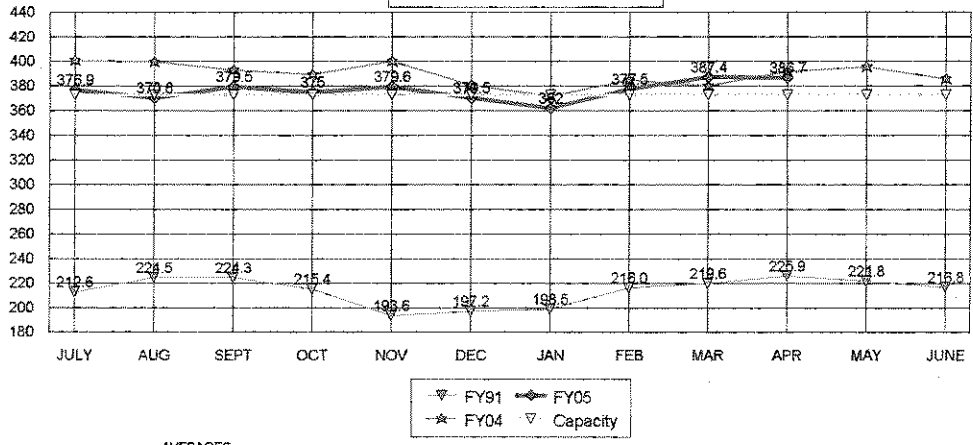
1. Work has been completed for the jail's court holding area including the installation of a new security door, locks, hard surface ceilings, new electrical and HVAC lines, new paint, and tile repairs.
2. Renovations were completed for the jail superintendent's office. New electronic locks, camera, and two monitors were installed. Carpeting was removed and replaced, as well as modular furniture set up for a new office area.
3. Work continues on the installation of LCF emergency generator.
4. Work has resumed on the community service program which began pickup up litter on county roads as of April 26.
5. Assistance has been provided to the Election Commissioner with various projects.
6. Corrections maintenance department and Officer Dave Marrell having been cleaning out the warehouse in preparation for the installation of the jail's new security system. This area will be used as temporary office space for Metroplex personnel.

Ridge Jensen of Metroplex Security Systems, along with other engineers, have started inspecting areas of the jail facility to develop plans for running electrical lines. He is also conducting interviews with local electricians to assist with the preparations.

E. NEW BUSINESS

1. The department has recently received correspondence from Lincoln Electric System depicting an 11.8-12% increase in electrical costs in the upcoming year. Discussions with Roger Van Lanningham of LES will be conducted to discuss this increase for the department's facilities.
2. The department is continuing to work with Purchasing for the development of an RFP for pre-architectural plans to be presented to the County Board for the discussion and approval. It is hoped this plan will be the catalyst for expansion options for the department.

**TOTAL POPULATIONS
FY91, FY04, FY05**

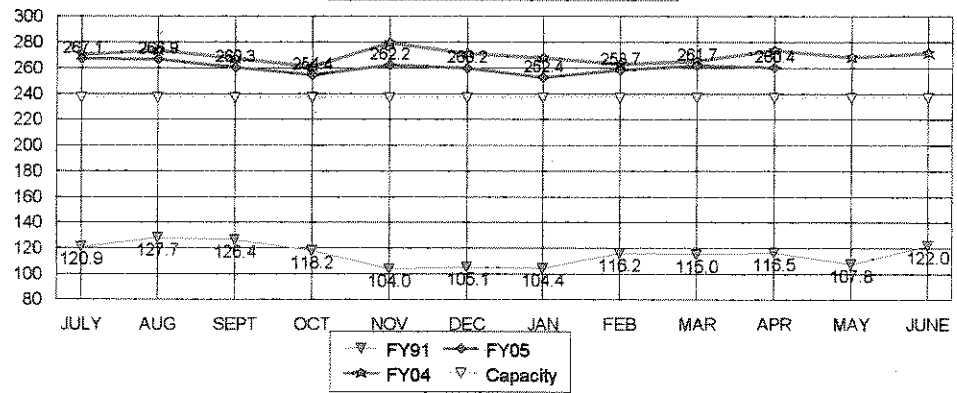


AVERAGES

FY05 TO DATE	376.6
FY04 SAME PERIOD	389.3
FY04 TO YR-END	389.6

-3.3% Change in FY05 to date over same period last year
-3.3% Change in FY05 to date over FY04 average to year-end

**JAIL-ONLY POPULATION
FY91, FY04, FY05**

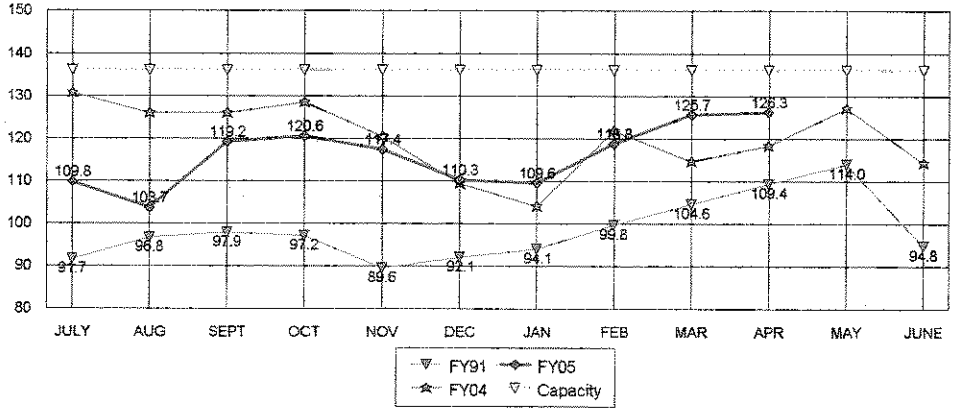


AVERAGES

FY05 TO DATE	260.4
FY04 SAME PERIOD	269.3
FY04 TO YR-END	269.5

-3.3% Change in FY05 to date over same period last year
-3.4% Change in FY05 to date over FY04 average to year-end

**LCF-ONLY POPULATION
FY91, FY04, FY05**



AVERAGES

FY05 TO DATE	116.1
FY04 SAME PERIOD	120.0
FY04 TO YR-END	120.1

-3.2% Change in FY05 to date over same period last year
-3.3% Change in FY05 to date over FY04 average to year-end

**LANCASTER COUNTY CORRECTIONS DEPARTMENT
MONTHLY STATUS REPORT**

CALENDAR YEAR 2004

	2004			AVERAGE TO DATE	TOTAL TO DATE
	JAN	FEB	MAR		
INTAKE & DETENTION FACILITY					
Average Daily Population	268.0	263.0	265.6	266	N/A
High for Month	296	287	289	291	N/A
Low for Month	254	240	256	250	N/A
Total Number of Bookings	805	756	834	798	2,395
New Bookings	208	227	232	222	667
Felony Arrests	99	116	141	119	356
Misdemeanor Arrests	493	458	581	511	1,532
Domestic Violence Arrests	27	26	28	27	81
DWI Arrests	96	94	87	92	277
Felons Sentenced	6	5	3	5	14
Misdemeanants Sentenced	107	82	109	99	298
Held for Other Jurisdictions	61	61	73	65	195
Total Conditionally Released	265	279	322	289	866
Percent Conditionally Released	34.60%	38.64%	35.50%	36%	N/A
Pre-Arrestion Releases	191	196	214	200	601
Court Disposition Releases	66	83	108	86	257
Total of Individuals Lodged	501	443	585	510	1,529

LANCASTER CORRECTIONAL FACILITY

Average Daily Population	104.1	121.8	114.7	114	N/A
High for Month	126	135	132	131	N/A
Low for Month	81	112	102	98	N/A
Estimated Value of Inmate Labor @ \$5.15	\$1,978	\$2,405	\$2,457	\$2,280	\$6,840

MEDICAL/MENTAL HEALTH SERVICES

Referred to Jail Physician	55	55	62	57	172
Referred to Mental Health/LRC	12	4	4	7	20
Transferred to Emergency Room	3	5	3	4	11

**LANCASTER COUNTY CORRECTIONS DEPARTMENT
MONTHLY STATUS REPORT**

CALENDAR YEAR 2005

	2005				AVERAGE TO DATE	TOTAL TO DATE
	JAN	FEB	MAR	APR		
INTAKE & DETENTION FACILITY						
Average Daily Population	252.4	258.7	261.7		258	N/A
High for Month	274	271	276		274	N/A
Low for Month	226	245	246		239	N/A
Total Number of Bookings	694	824	980		833	2,498
New Bookings	219	260	241		240	720
Felony Arrests	109	122	151		127	382
Misdemeanor Arrests	427	542	647		539	1,616
Domestic Violence Arrests	40	28	31		33	99
DWI Arrests	71	112	95		93	278
Felons Sentenced	11	2	9		7	22
Misdemeanants Sentenced	88	96	102		95	286
Held for Other Jurisdictions	66	63	79		69	208
Total Conditionally Released	257	321	350		309	928
Percent Conditionally Released	36.66%	38.90%	35.43%		37%	N/A
Pre-Arrestment Releases	175	179	186		180	540
Court Disposition Releases	82	142	164		129	388
Total of Individuals Lodged	444	504	638		529	1,586

LANCASTER CORRECTIONAL FACILITY						
Average Daily Population	109.6	118.8	125.7		118	N/A
High for Month	125	134	131		130	N/A
Low for Month	97	107	117		107	N/A
Estimated Value of Inmate Labor @ \$5.15	\$3,765	\$2,537	\$1,581		\$2,628	\$7,883

MEDICAL/MENTAL HEALTH SERVICES						
Referred to Jail Physician	118	147			133	265
Referred to Mental Health/LRC	3	8	9		7	20
Transferred to Emergency Room	4	3			4	7