

BEFORE THE BOARD OF COUNTY COMMISSIONERS
OF LANCASTER COUNTY, NEBRASKA

IN THE MATTER OF COUNTY)
MAINTENANCE OF ROADS IN)
SILVERHAWK ESTATES ADDITION)

RESOLUTION NO. R-19-0070

WHEREAS, Silverhawk Estates Addition is a validly platted subdivision located in Lancaster County and;

WHEREAS, representatives of said Silverhawk Estates Addition have requested that the County provide maintenance for roads located therein.

NOW, THEREFORE, BE IT RESOLVED, by the Board of County Commissioners of Lancaster County, Nebraska, that Lancaster County hereby accepts for County maintenance for certain roads and streets located within Silverhawk Estates Addition to wit:

Roadways of approximately 5,571 linear feet in length and to include the following:

- 1) Approximately 2,726 feet of South 59th Street
- 2) Approximately 297 feet of Silverhawk Court
- 3) Approximately 640 feet of Sea Eagle Lane
- 4) Approximately 1,030 feet of Raptor Drive
- 5) Approximately 302 feet of Red Kite Lane
- 6) Approximately 576 feet of South 61st Place

All located in the NW¼ of Section 16, Township 8 North, Range 7 East of the 6th Principal Meridian, Lancaster County, Nebraska, as shown on Exhibit "A" attached hereto and incorporated herein by this reference.

BE IT FURTHER RESOLVED that County Maintenance for the roads and streets listed above shall be exclusively limited to the following maintenance items:

- 1. Maintaining surfacing and subgrade of public roadways as per County requirements;
- 2. Maintaining roadway drainage ditches and drainage culverts as per County requirements;
- 3. Maintaining development signing as per County requirements; and
- 4. Snow plowing of public roadways in accordance with County standard practice.

DATED this _____ day of _____, 20_____

BY THE BOARD OF COUNTY COMMISSIONERS
OF LANCASTER COUNTY NEBRASKA

APPROVED AS TO FORM THIS

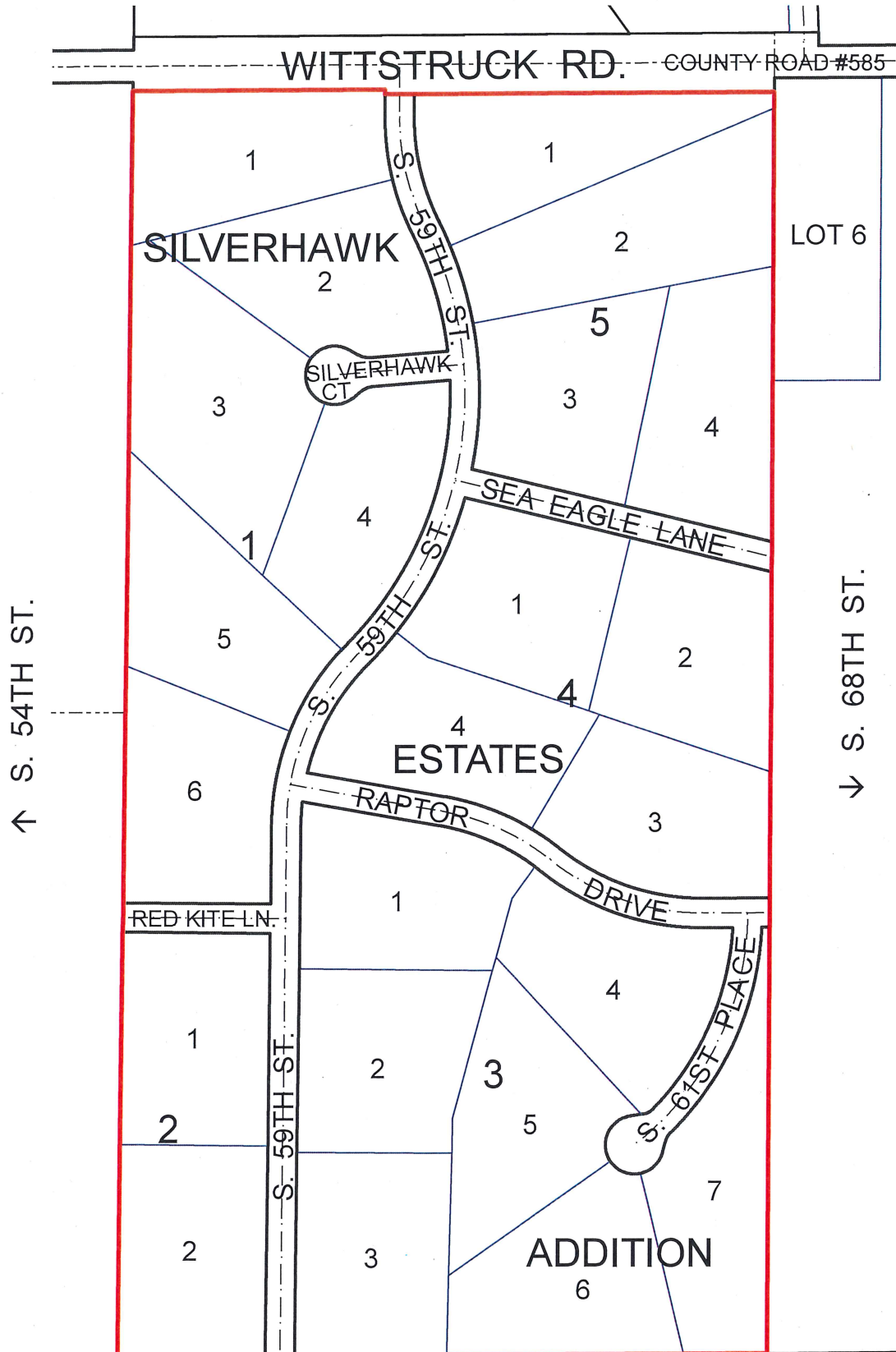
_____ day of _____, 20_____

County Attorney's Office

EXHIBIT "A"

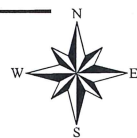
SILVERHAWK ESTATES ADDITION

SEC. 16, T.8N., R.7E.



↑ S. 54TH ST.

↓ S. 68TH ST.



LANCASTER
COUNTY

Pamela L. Dingman, P.E.
County Engineer

ENGINEERING

Kenneth D. Schroeder, R.L.S.
Deputy County Surveyor

DEPARTMENT

DATE: October 7, 2019

REQUEST FOR AGNEDA OF: October 15, 2019

TO: Jenifer Holloway
Deputy County Attorney

FROM: County Engineering Department

CONTACT PERSON: Ken Schroeder 
County Surveyor

PHONE: 402-441-7681

SUBJECT: COUNTY MAINTENANCE FOR ROADS WITHIN SILVERHAWK ESTATES ADDITION

Resolution for acceptance of Silverhawk Estates Addition for maintenance by Lancaster County generally located at S. 59th St. and Wittstruck Rd., in the NW $\frac{1}{4}$ of Section 16, T8N, R7E, Lancaster County, NE.

Jenifer, please review and prepare this item to be placed on the County Board's upcoming agenda. If you have any questions or need additional information, feel free to call.

Cc: Monet McCullen, County Clerks, Office
Pam Dingman, County Engineer
Ron Bohaty, Road Maintenance Superintendent

Enclosures

KDS/bml

F:\Clerical\Private\Subdivisions\Silverhawk_Estaes_Addition\Memo_Trans_for_Board.docx

LANCASTER
COUNTY

Pamela L. Dingman, P.E.
County Engineer

ENGINEERING

Kenneth D. Schroeder, R.L.S.
Deputy County Surveyor

DEPARTMENT

DATE: October 9, 2019

TO: Lancaster County
Board of Commissioners

FROM: Ken Schroeder
County Surveyor 

SUBJECT: REQUEST FOR COUNTY MAINTENANCE FOR SILVERHAWK ESTATES ADDITION
GENERALLY LOCATED AT SOUTH 59TH STREET AND WITTSTRUCK ROAD,
(SECTION 16, T8N, T7E)

Our office has received a request from representatives of subject development for Lancaster County to accept their streets and roads for County maintenance.

We find that this development now meets the requirements as outlined in Resolution R-19-0051 and would recommend approval of their request for acceptance of County maintenance.

Cc: Jenifer Holloway, Deputy County Attorney
Pam Dingman, County Engineer
Monet McCullen, County Clerk's Office

KDS/bml

F:\Clerical\Private\Subdivisions\Silverhawk_Estaes_Addition\Maintenance Request Mem #2.doc