

# County Bridge Match Program



NEBRASKA

Good Life. Great Journey.

DEPARTMENT OF TRANSPORTATION

Mark Traynowicz  
State Bridge Engineer

Lancaster County Board of  
Commissioners  
Staff Meeting  
November 8, 2018

# Today's Presentation

- Overview of Program
- Nebraska's Bridges
- Program Update
- Scoring Criteria



# Round 3 Important Dates

- Friday October 12 – RFP Published
- Friday November 30 – Proposals due
- Friday January 11 – Announcement of Selected Proposals
- \$4 Mill of CBMP Funds



# Transportation Innovation Act Neb. Rev. Stat. 39-2801 to 39-2824 (LB 960)

- Accelerated State Highway Capital Improvement Program
- Economic Opportunity Program
- **County Bridge Match Program**





# Transportation Innovation Act Neb. Rev. Stat. 39-2801 to 39-2824 (LB 960)

- **County Bridge Match Program**

- *promote **innovative** solutions and provide additional funding to accelerate the repair and replacement of deficient bridges on the county road system*
- *in consultation with a statewide association representing county officials – **Working Group***

- 55% Match Program (State) funds
- 45% County funds
- 70% of funds distributed at project award
- 30% of eligible funds distributed at project closeout



# Working Group Members

- **Larry Dix**, NACO Executive Director
- **Kevin Barta**, Knox County, President NACE
- **Chris Jacobsen**, Custer County
- **Steve Mika**, Saunders County
- **Steve Riehle**, Hall County
- **Tim Ryan**, Keith County
- **Denny Wilson**, Sarpy County
- **Moe Jamshidi**, NDOT
- **Mark Traynowicz**, NDOT
- **Mick Syslo**, NDOT
- **Jodi Gibson**, NDOT



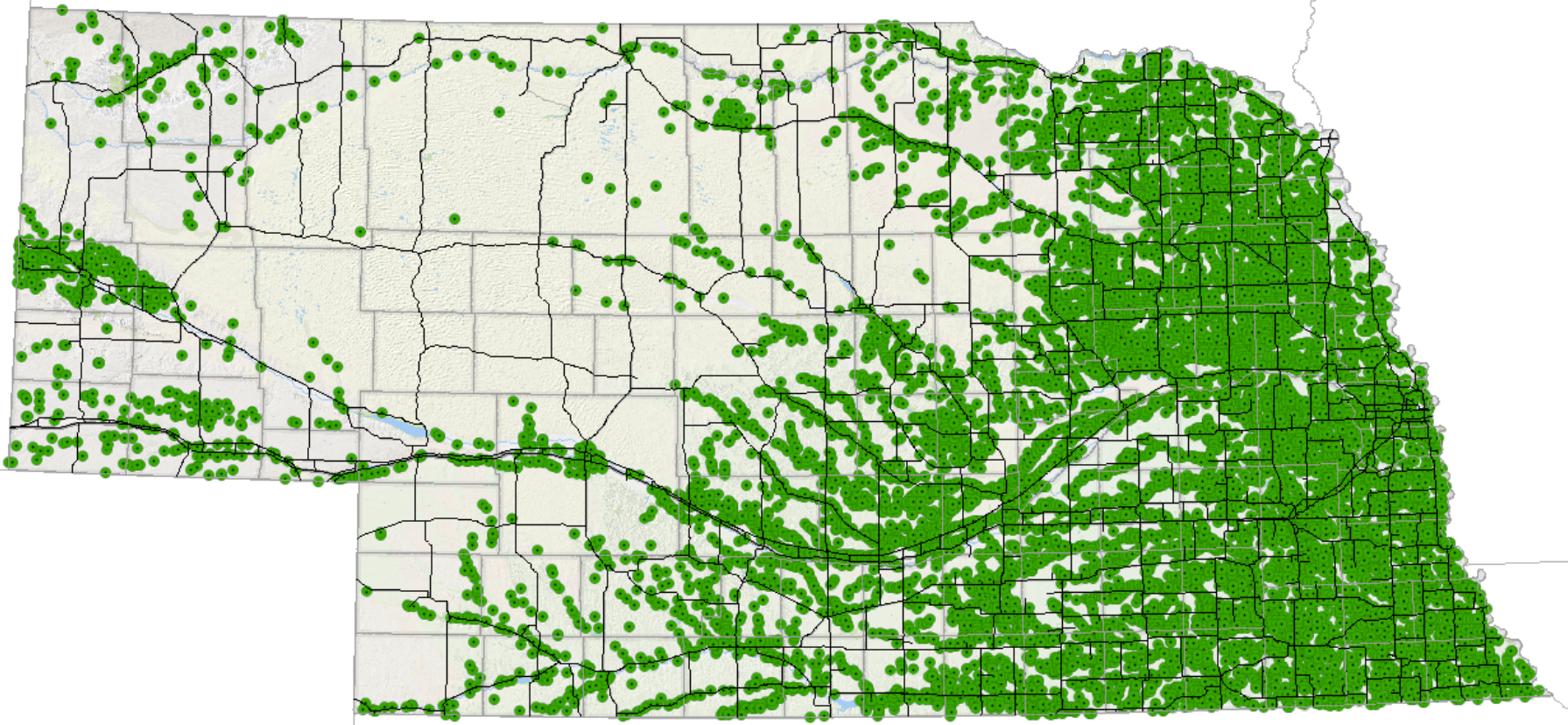
# Nebraska's Bridges

- **Nebraska has 15,040 bridges (over 20ft.)**
- **16<sup>th</sup> in the nation for total number of bridges**
- **5<sup>th</sup> in the nation for number of SD bridges**
  
- **11,070 (74%) county bridges**
  - **4,149 (37%) over 50 years old**
  - **1,896 (17%) structurally deficient**
  - **144 (1.3%) currently closed**



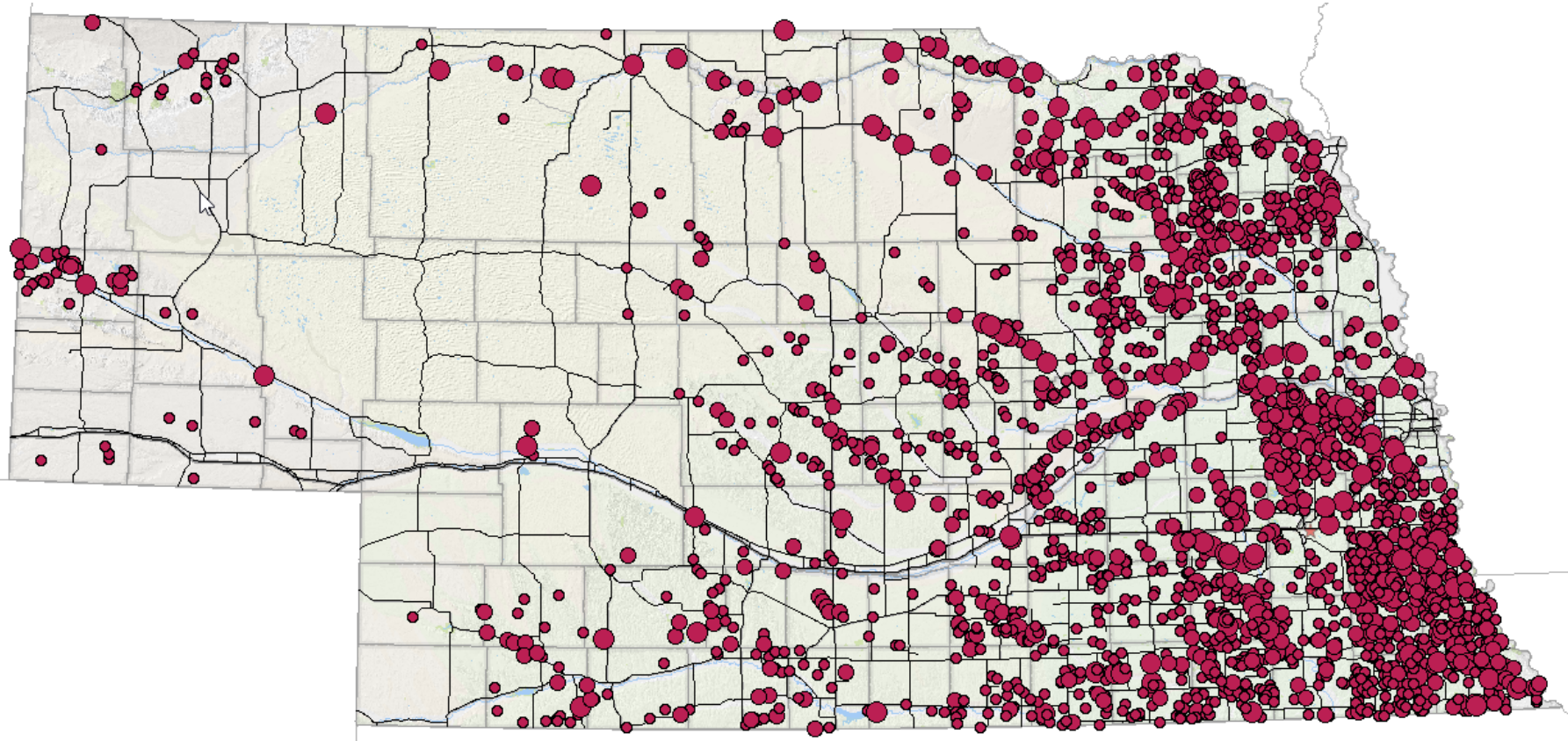


# County Bridges in Nebraska – 11,070

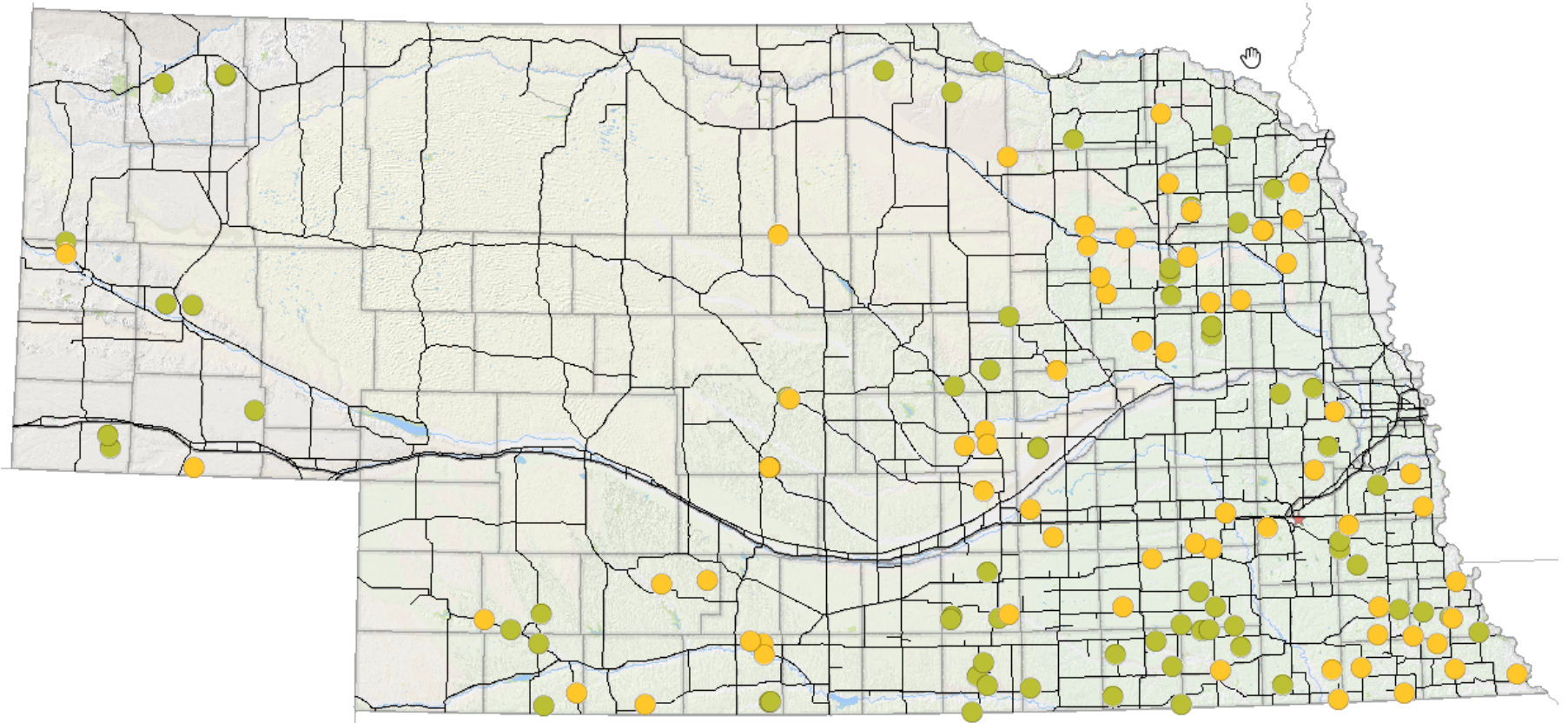




# Eligible Bridges – 2,070

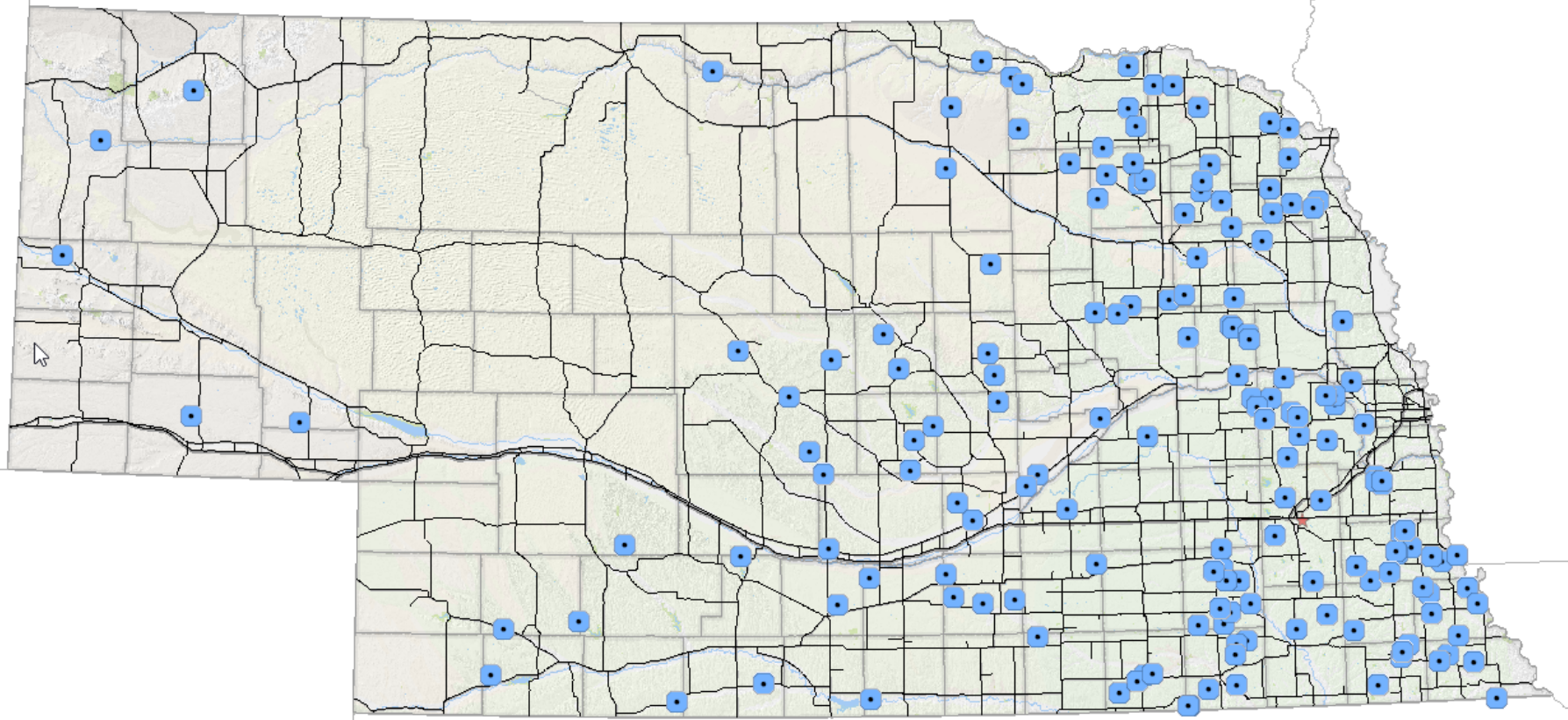


# Selected Bridge Sites - 134



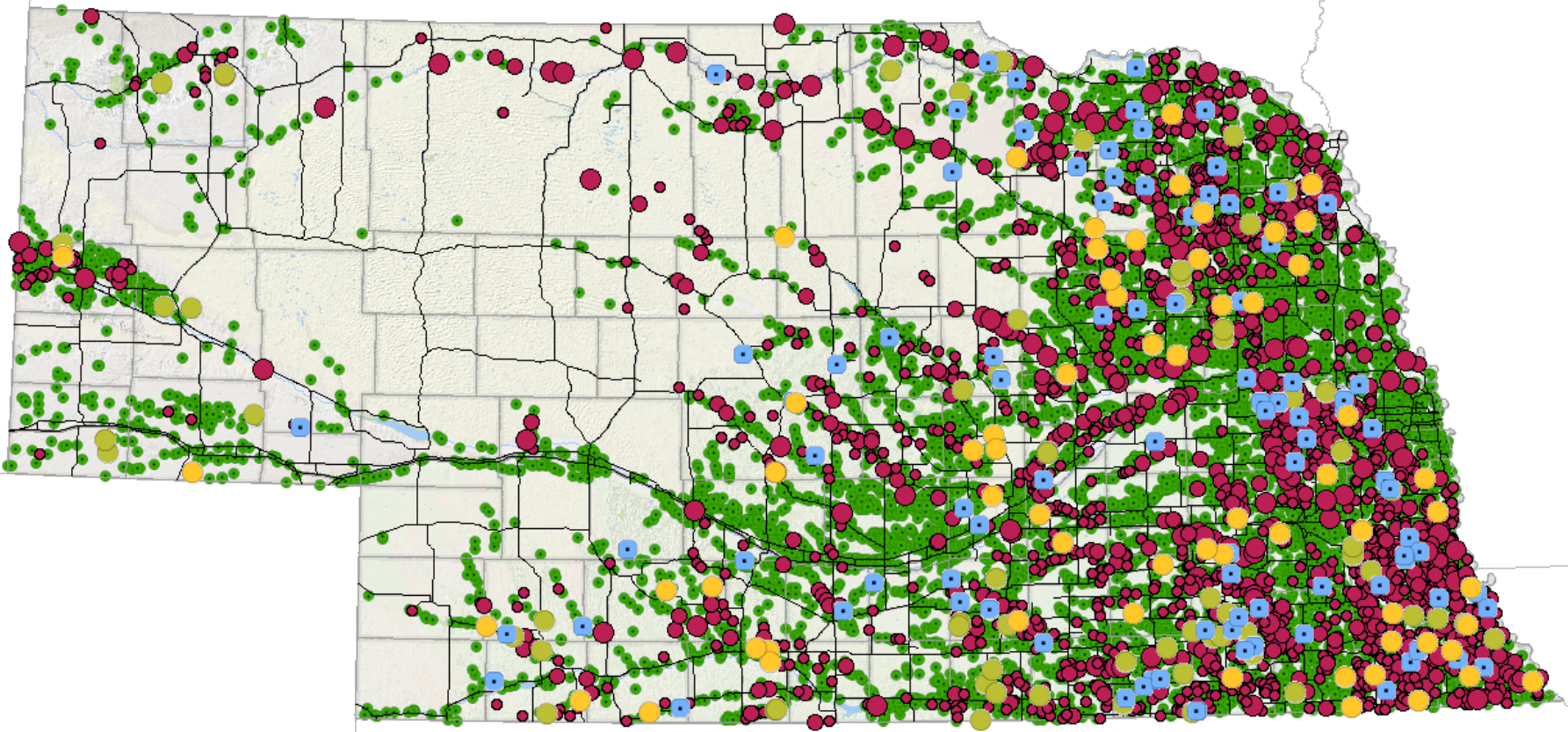


# Local Funded Projects - 163





# Round 1 & 2 Selections + Local funded projects + all eligible bridges + all county bridges



# Update Rounds 1 & 2

- 134 Bridges (68 Rd 1, 66 Rd 2)
- 20 Multi-county proposals
- \$8 Mill of CBMP (State) funds
- CORPS Permit cover letter is required to receive funding





# Types of Bridges

- 73 culvert pipes (some non-bridge length)
- 32 concrete box culverts
- 10 precast deck panels
- **9 bridge removals**
- 5 rehabs or repairs
- 5 girder bridges





# County Submittals and Selections

- 82 Counties have eligible bridges (structurally deficient)
- 47 Counties have been selected for funding
- 67 Counties have submitted proposals or been included on a proposal in Rounds 1 and 2
- 15 Counties have never submitted a proposal



# Scoring Process/ Criteria

- Innovation (0-20 pts)
- Cost or Time Savings (0-5 pts)
- Sustainability or Transferability of Innovation (0-10 pts)
- Long-Term Maintenance Savings (0-5 pts)
- Project Significance/Risk (0-20 pts)
- Needs (by % in NACO District) (0-20 pts)
- **Equity (0-20 pts)**



# Innovations

- Better, more efficient, lower cost, etc.
- Bundling of multiple bridges
- Multi-county coordination
- Construction with county forces
- Coordination between counties, city, and NRD on a flood control project to reduce flows and require shorter, less expensive bridges
- **Bridge removals**
- Rehabilitation/repair
- Replace with non-bridge length structures
- Precast concrete deck panels
- Multiple culvert pipes





# CBMP Website

## Background

Rural transportation provides essential mobility and connectivity for many Nebraskans who rely on safe and efficient roads to deliver agricultural, energy, manufactured and other industry goods to market.

The current condition of Nebraska's rural bridges impedes personal and commercial travel that is critical to the safety and prosperity of our citizens. The Transportation Infrastructure Bank Fund creates the County Bridge Match Program which will devote additional funding to pilot innovative solutions to help repair or replace critical bridges on county road systems.



## Downloadable Documents

- [County Bridge Match Program Selection Criteria](#)
- [Map of Eligible and Selected County Bridges](#)
  - [How to use this map](#)
- [County Bridge Match Program Q&A](#)
- [County Bridge Match Program RFP - October 2016 | October 2017](#)

## Selected Proposals

January 12, 2018

- [Selected Bridge Sites](#)
- [List of All Proposals](#)
- [Selected Proposal Forms](#)

January 9, 2017

- [Selected Bridge Sites](#)
- [List of All Proposals](#)
- [Selected Proposal Forms](#)



# All Selected Proposal Forms



## County Bridge Match Program Selected Proposals January 12, 2018

NACO District	Lead County	Bridge County	Structure Number	Local Bridge ID	Location	Cost Estimate	Estimated CBMP Funding
Southeast	Johnson	Johnson	C004902535		2.2W 2.5N OF TECUMSEH at STREAM	\$121,520	\$66,836
Southeast		Johnson	C004902305		JCT N50/N62 4W .7N at STREAM	\$67,840	\$37,312
Southeast		Gage	C003427230	Y N 35-1	4.5S OF LIBERTY at STREAM	\$138,800	\$76,340
Southeast		Gage	C003414315	Q-E-16-1	4N 2W OF LIBERTY at WILDCAT CREEK	\$131,600	\$72,380
Southeast		Pawnee	C006701810	T2N R9E S12SE	NJCT N8/N99 2.5N .3W at STREAM	\$59,400	\$32,670
Southeast		Pawnee	C006713423	T1N R12E S19S	JCT N65/S-67C 1S 2.3E at NEGRO BRANCH	\$94,090	\$51,750
Southeast	Lancaster	Lancaster	C005500640	B-147	JCT US77/S-55E 2N 3.5E at STREAM (B 147)	\$400,000	\$100,000
Southeast		Lancaster	C005504005	N-19	N EDGE OF CONESTOGA LAKE at STREAM (N 19)	\$350,000	\$100,000
Southeast	Otoe	Otoe	C006600415		4.2N PALMYRA at STREAM	\$91,360	\$50,248
Southeast		Nemaha	C006402910P		4E 1.5S OF JULIAN at STREAM	\$67,280	\$37,004
Southeast		Nemaha	C006402710		1N OF HOWE at STREAM	\$67,840	\$37,312
Southeast		Nemaha	C006400305		2.4W 9.1S OF JOHNSON at STREAM	\$122,960	\$67,628
Southeast		Saunders	C007832670		1N 2.2W OF YUTAN at STREAM	\$47,040	\$25,872
Southeast		Cass	C001305310P	T-16-NS-2100	.5N 2E NEHAWKA at STREAM	\$52,800	\$29,040
Southeast		Cass	C001304715	G-25-26-2700	6.9E 1.5S OF LOUISVILLE at STREAM	\$74,560	\$41,008
Southeast	Richardson	Richardson	C007402010P	23-2-14 O-39	.2SE DAW (710T-639/640BL) at STREAM	\$250,000	\$100,000
Southeast		Richardson	C007421110	11-3-13K-143	1E4.5N HUMB (635-718/719) at STREAM	\$250,000	\$100,000
Southeast		Richardson	C007452615	2-1-17 D-199	2N1.7W RULO(708-658/659) at STREAM	\$50,000	

# Round 3 Important Dates

- Friday October 12 – RFP Published
- Friday November 30 – Proposals due
- Friday January 11 – Announcement of Selected Proposals
- \$4 Mill of CBMP Funds





# Questions?

