



FINISHING THE CAPITOL COURTYARD GARDENS

LANCASTER COUNTY VISITORS IMPROVEMENT FUND LARGE GRANT APPLICATION COVER SHEET JULY 30, 2018

1. 1-page Overview of Project
2. Completed application with project description
3. Project Budget
4. Operating budget. This is the maintenance budget provided by Campbell's Nurseries. Maintenance for this project will be overseen and facilitated by the State of Nebraska Capitol Administrator Bob Ripley. Funds will be provided by the endowment.
5. Marketing budget
6. Contractors bid for the project (Campbell's Nurseries)
7. Support Letters:
 - Jeff Searcy, Chair, The Nebraska 150 Foundation
 - Tom Carlson, President, Nebraska Association for Former State Legislators
 - Bob Ripley, State Capitol Administration
8. Proof of 501(c)(3) status: Celebrating Nebraska Statehood, fiscal agent for this project
9. Donor list

For more information, please contact: Susan Larson Rodenburg, Campaign Organizer, 402-440-3227, Susan@SLRCommunications.com



FINISHING THE CAPITOL COURTYARD GARDENS

THE CAPITOL COURTYARD GARDENS PROJECT

The Nebraska Association of Former State Legislators is leading a \$1.4 million campaign to restore landscaping of the four courtyards inside the Nebraska State Capitol and establish an endowment to preserve those gardens.

When State government began using the Capitol in 1932, the building was incomplete as the interior courtyards had landscaping but no fountains. The State provided \$3.1 million for the fountains, which were installed and dedicated in 2017 during the Sesquicentennial celebration.

This project will provide funding for the restoration of the courtyard landscaping which has been missing since the 1960s due to lack of funds. The project includes irrigation and drainage systems, plantings and a \$1 million maintenance and ongoing care endowment.

Once the gardens are finished, Capitol Architect Bertram Goodhue's vision for the National Historic Landmark State Capitol will finally be realized and future generations of Nebraskans can enjoy these beautiful retreats for many years to come.

PARTNERSHIPS

Celebrating Nebraska Statehood Inc. is the fiscal agent for this project. This 501(c)(3) was formed in 2016 by First Lady Susanne Shore to support and promote events related to the celebration of Nebraska's 150th year of statehood and for subsequent anniversaries. Celebrating Nebraska Statehood is continuing to serve the people of Nebraska with various statewide initiatives, including this project.

The State of Nebraska is involved in the planning, installation and ongoing maintenance. The State is acting through the Nebraska Capitol Commission and its Office of the Capitol Administrator, headed by Robert Ripley.

PROJECT COST: \$1.4 million includes plantings, installation, drainage and irrigation systems and a \$1 million care and maintenance endowment.

CAMPAIGN TEAM: Former Senators DiAnna Schimek (Chair), Tom Carlson, Jim Jensen, Joel Johnson, Vickie McDonald, Scott Moore, John Nelson, Sandy Scofield and Bob Wickersham

PROJECT ADVISOR: Robert Ripley, Capitol Administrator

WEBSITE: NE150.org/Courtyards

CAMPAIGN ORGANIZER: Susan Larson Rodenburg, SLR Communications, 402-440-3227 or Susan@SLRCommunications.com

**LANCASTER COUNTY VISITORS IMPROVEMENT FUND
GRANT REQUEST**

Name of Organization: The name of the 501(c)(3) for this project is Celebrating Nebraska Statehood Inc. Celebrating Nebraska Statehood Inc. is acting as fiscal agent for the Nebraska Association of Former State Legislators, which is leading a \$1.4 million campaign for the Capitol Courtyard Gardens. Celebrating Nebraska Statehood Inc., (Celebrating) was formed in 2016 by First Lady Susanne Shore to support and promote events related to the celebration of Nebraska's 150th year of statehood and for subsequent anniversaries. Celebrating is continuing to serve the people of Nebraska with various statewide initiatives, one of which is its collaboration with the Association. Celebrating is acting as the fiscal agent for this project and is providing web and administrative support.

The Nebraska Association of Former State Legislators is leading the planning and fundraising, will issue and monitor performance of a contract for installation of the gardens with oversight by the Nebraska Capitol Commission and Capitol Administrator Bob Ripley and will establish an endowment for the perpetual maintenance of the gardens after installation.

Unless otherwise specified all information in this application applies to the Nebraska Association of Former State Legislators and this project.

Contact Person: DiAnna Schimek, Campaign Leader

Address/City/State/Zip: 6437 Lone Tree Dr., Lincoln, NE 68512

Telephone: 402-423-0262 Email dschimek7@gmail.com

Organization Status: Non-Profit

Celebrating Nebraska Statehood Inc. is a non-profit, 501 (c) (3), Tax ID 47-4867912, established in 2016 by First Lady Susanne Shore.

Applicant Government/organization Federal ID number: 47-3867912 (Celebrating Nebraska Statehood Inc.)

If tax exempt organization, designate IRS classification: 501(c)(3) (Celebrating Nebraska Statehood Inc.)

Provide a detailed description of your exhibit/attraction: The Nebraska Association of Former State Legislators is collaborating with Celebrating Nebraska Statehood and the State of Nebraska, acting through the Nebraska Capitol Commission, to raise \$1.4 million to restore landscaping of the four courtyards inside the Nebraska State Capitol and build an endowment to preserve those gardens.

When State government began using the Capitol in 1932, the building was incomplete as the interior courtyards had landscaping but no fountains. The State provided \$3.1 million for the fountains which were installed and dedicated in 2017 during the Sesquicentennial celebration. This project will provide funding for the restoration of the landscaping inside the Capitol courtyards which has been missing since the 1960s due to lack of funds. The project includes irrigation and drainage systems, plantings and a \$1 million maintenance and ongoing care endowment. Once the gardens are finished, Capitol Architect Bertram Goodhue's vision for the National Historic Landmark State Capitol will finally be realized and this historic, unique attraction will provide a compelling new reason for people to visit Lincoln and tour the State Capitol.

Number of attendees estimated: Out of town 72,000 Local 48,000 (annually)

Check all that apply:

- Expanding and improving any existing visitor attraction.
- Planning or developing such expansion improvements, exhibits or additions.
- Acquiring or expanding exhibits for existing visitor attractions.
- Promotion and advertising costs associated with such exhibits.
- New Construction

Please describe project as indicated above.

- **An Opportunity to Complete the Vision for our State Capitol:** The Capitol Courtyard Gardens project was initiated in 2017 by the Nebraska Association of Nebraska Former State Legislators, which was established to include all former senators and to undertake projects for the benefit of Nebraskans. Campbell's Nurseries of Lincoln and the Big Muddy Workshop of Omaha updated the original landscape plan developed in 1933 by architect Ernst Herminghaus (who also designed Pioneers Park) to include newly developed, hardier varieties that will survive in a changing climate. Although similar in overall plant layout and border design, the flower beds in each courtyard are distinctly different in color palette, with a series of taller shrubs and small trees against the building, and low-growing hedges along the interior sidewalks. Each courtyard will have its own unique mix of colorful plants that includes tulips, petunias, roses, lilacs, hydrangeas and other varieties. The landscaping will put the finishing touches on the Nebraska State Capitol, a National Historic Landmark.
- **An Opportunity for Partnering and Economic Impact to Lancaster County:** Now that the State has provided the resources for the fountains, all that is needed is to restore the courtyard gardens. Support from Lancaster County will boost our ability to leverage support from private sources across the state and result in a substantial public-private partnership with enormous public benefit and economic impact to the area.
- **Expands Tourism Potential:** The finished gardens will be a new attraction for all Capitol visitors, garden clubs and others. This project will complete the vision of the Capitol architect and create an incredible, rare enhancement of one of Lincoln's top tourism attractions.

Project Start Date: 4/01/2018 Completion Date: 6/01/2026

Is this project part of a larger renovation project? YES

If yes, please describe the entire project:

The courtyard gardens are the missing pieces of the original Capitol design. The Nebraska Association of Former State Legislators championed a \$3.1 million State appropriation for installation of the courtyard fountains in 2017. However, the State cannot commit additional funds to restore the landscaping or to maintain the courtyards at this time. The Herminghaus-designed Capitol landscape, which includes the courtyards and the exterior landscape, is part of the Nebraska State Capitol's official designation as a National Historic Landmark. Of the buildings nationally designated as National Historic Landmarks, it is rare to find both the building and its landscape so designated. The restoration of the courtyard gardens and the establishment of an endowment fund to ensure that the courtyards remain beautiful forever is the last step in a 30-year effort to complete and restore the Capitol as envisioned by architect Bertram Goodhue and others. Our National Landmark State Capitol is a top tourism attraction in Lincoln and Lancaster County.

As it pertains to the grant related project, provide breakdowns of radio and television advertising, showing individual costs, call letters and cities of origin. Also give breakdowns of magazine advertising by individual publications and costs. Similarly, separate the costs for brochures, travel shows by location, billboard advertising, etc. Include target market demographics.

Since the State Capitol is a public building, there is no charge for visitors. The State Capitol currently attracts nearly

100,000 visitors and a wide variety of tours each year without using state tax funds to promote it as a tourist attraction. However, once the gardens are completed, a free, public open house with a statewide news release and other free publicity will be planned and promoted to create greater awareness of these new, unique attractions inside the State Capitol. It is anticipated that the completion of the courtyards will result in additional coverage by Nebraska Educational Television (which featured the new courtyards in a "Nebraska Stories" segment), Nebraska newspapers, TV and radio stations. The gardens will become part of the Capitol guided tours, as well as information provided about the Capitol. A marketing plan and budget is attached.

Do you anticipate submitting future applications for projects relating to this project? NO

Total projected budget (attach detailed budget)

Total Revenue: \$1,402,778

Total Expense: \$1,402,778

How will your project impact new visitor recruitment and lodging tax revenues?

1. **Enhances a Top Tourism Attraction in Lancaster County:** The State Capitol's Courtyard Gardens will provide a unique attraction and additional recruitment tool for the CVB to use when promoting bus tours, recruiting conventions and other events to Lincoln, or advertising Lincoln as a stopover on a cross country trip, resulting in increased lodging tax revenues. During the legislative session, leadership groups, commercial clubs, business associations and others tour the Capitol as part of their visit. Other touring groups include visiting students and scholars from universities and state colleges, public and private, the Friendship Force, the Mayor's Committee for International Friendship and senior citizen excursions. Most tours include 30-50 people with 2-3 adult groups per week.

The project will attract new visitors to the Capitol, as well as those who will be compelled to come again to see the courtyard gardens.

2. **Provides a Unique Promotional Opportunity:** Many people have "visit all 50 state capitols" on their bucket list. Those who have visited the Capitol will be interested in returning to see these unique gardens. It is rare to find such an enhancement in a State Capitol. In fact, research to date does not show any other comparable gardens in the country.

In addition, Nebraska's immigrant communities bring their visiting families from Vietnam, Iraq, Japan, China, and Europe to the Capitol as it is a spectacular and free place to visit. Other groups from foreign countries visit the Capitol to study the Unicameral system.

3. **Expands Visitor Audiences:** Garden clubs are a special target audience to increase visits to the Capitol. The Capitol Courtyard Gardens can be packaged with other featured public garden sites in Lincoln such as the Sunken Gardens, Hamann Rose Garden, the gardens on UNL's East Campus (Fleming Slope, Magdeline Pfister Iris Garden, Maxwell Arboretum, Old Mall Garden, The Porch & Old Rose Garden, Yeutter Garden) and the gardens on UNL's City Campus (Andrews & Burnett Garden, Cather Garden, Donaldson Garden, Love Garden, Sheldon Garden).

The potential increased visitorship from local and regional garden clubs and individual gardeners is substantial. For example, there are 800 Master Gardeners in Nebraska and 85,000 nationwide. Trained by Land Grant Universities, Master Gardeners are connected to other gardeners in their communities and are easily reached through County Extension offices.

In addition to Master Gardeners, most states have Federated Garden Club chapters which are members of National Garden Clubs Inc. Nebraska has 16 clubs with a membership of 305. Iowa divides itself into eight

districts and has 43 clubs. Kansas, Missouri, and South Dakota are also close enough to encourage garden clubs to visit the Capitol Gardens. All states have an annual convention and in addition there is a national convention. Garden clubs sponsor field trips and maintain websites which could be used to publicize the opportunity to visit the Capitol courtyard gardens in Lincoln. Colorado, Nebraska, Montana, Kansas, North Dakota, South Dakota, Wyoming and Utah make up the Rocky Mountain Region, which is holding its annual meeting at Fort Robinson in August of 2018. Once the Capitol Courtyard Gardens are complete the opportunity will be enhanced for Lincoln to attract conventions or meetings of gardeners, arborists, landscapers, architects, historians, state officials and nursery owners as well as botanists and horticulturalists.

Estimated annual visitors: Local 48,000 Outside of Lincoln 72,000 (Based on estimates by Capitol staff.)

Estimated Annual economic impact of your facility and/or project based on lodging tax use:
(Using provided multipliers)

Additional 8,000 local visitors annually x \$245 local event= \$1.96 million

Additional 12,000 out of town visitors x \$350 state event = \$4.2 million

TOTAL Estimated Annual Economic Impact of the Capitol Courtyard Gardens: \$6.16 million*

*National/Regional event multiplier not used since Capitol staff does not distinguish between out of state and national/regional visitors.

Is this based on annual use of the facility or for a specific event/exhibition? The estimated annual economic impact of this project is based on the annual use of the Capitol as a tourist destination. During the Legislative session many Nebraskans come to hearings and to visit which also increases overnight stays. When the courtyard gardens are restored, Capitol staff anticipates a 20% increase in visitor activity because the State Capitol has a new attraction. People who love public gardens will be compelled to visit the Capitol and this rare new exhibit, as well as the City's Sunken Gardens and the Rose Gardens, and UNL's gardens on the City and East campuses. The Capitol Courtyard Gardens will be another reason to extend their visit. Even if only 6,000 (or 50%) of the estimated additional out of town visitors stay for one additional overnight it would translate into \$2.1 million annual impact and the total estimated annual economic impact of the courtyard gardens would be: **\$4.06 million**. In summary, Lincoln will be well positioned to offer unique opportunities for additional visitors.

Is this grant request in addition to other project related grant requests? Yes.

If yes, then list other grant requests: Fundraising prospects include members of the NE Association of Former State Legislators, individuals, corporations and foundations in Nebraska. We have submitted grant proposals to entities across the state. Our initial emphasis has been on asking former senators to contribute \$1,000 each to the project. The response has been very positive. Current senators will soon be asked to contribute. We plan to solicit foundations in Omaha this fall, an effort led by former Sen. Scott Moore who is President of the Union Pacific Foundation.

Grant amount requested from Visitors Promotion Committee: \$200,000

Signature of Applicant DiAnna P Schumek

Date 7-29-18

Nebraska Capitol Courtyard Gardens Project				
Four Courtyards: Budget of Expenditures				
Updated: 5-7-18				
Irrigation Systems				
Mixed Sprinkler and Drip			\$59,000	
Irrigation total				\$59,000
Areas Inside Walkways				
Prepare areas for renovation			\$64,400	
Prepare areas for Installation			\$40,600	
Installation of plants				
Privet 1,600 plants	\$48,000			
Roses 4 varieties 404 plants	\$15,300			
Petunias 1,096 plants	\$7,900			
Tulips 4,384 plants	\$3,900			
Sod	\$6,300			
Mulch		\$5,100		
Labor		\$4,200		
Fees		\$7,900		
Inside Walkways totals before discount	\$81,400	\$17,200	\$105,000	\$203,600
Campbell's discount				-\$42,200
Inside Walkways discounted total				\$161,400
Areas Outside Walkways				
Prepare areas for Renovation			\$7,500	
Prepare areas for Installation			\$22,100	
Installation of plants				
Privet 203 plants	\$6,100			
no privets outside walkway	-\$4,000			
Plum 16 plants	\$50			
Lilac 6 varieties 24 plants	\$2,500			
Mockorange 3 varieties 64 plants	\$3,800			
Fringetree 8 plants	\$1,200			
Weigella 2 colors 8 plants	\$600			
Viburnum 2 varieites 12 plants	\$1,200			
Althea 3 varieties 12 plants	\$1,400			
Desmodium 32 plants	\$1,900			
Potentilla 56 plants	\$3,400			
Rose 24 plants	\$1,400			
Sobaria 28 plants	\$1,500			
Spirea 2 varieties 96 plants	\$5,000			
Kerria 20 plants	\$1,800			
Rosa 4 varieties 100 plants	\$6,200			
St Johnswort 28 plants	\$1,900			
Quince 24 plants	\$2,200			
Kolkwitzia 24 plants	\$1,300			
Burning Bush 24 plants	\$2,200			
Viburnum 24 plants	\$1,400			
Hydrangea 2 varieties 172 plants	\$17,500			
Sweetshrub 12 plants	\$1,200			
Summersweet 48 plants	\$5,000			
Mulch		\$2,200		
Labor		\$1,400		
Fees		\$4,900		
Outside Walkways totals before discount	\$66,750	\$8,500	\$29,600	\$104,850
Campbell's discount				-\$25,443
Outside Walkways discounted total				\$79,407
Irrigation and Plants Installation Total Discounted				\$299,807
Contingency 15% (10 yr project first work 2020)				\$44,971
Fundraising fees and costs				\$58,000
Preservation endowment to provide \$40,000 per year for maintenance of perennials and replacement of annuals (Any cost savings will accrue to endowment)				\$1,000,000
Initiative Total				\$1,402,778
NOTE	Sales tax will be payable on purchase of live plants and sod. Taxation of other items, such as mulch and irrigation system, to be determined. Due to uncertainties concerning rates and items subject to tax, sales tax is estimated at \$10,000 to \$15,000 but not included in budget.			



5625 Pine Lake Road
Lincoln, NE 68516
402-423-4556

PROPOSAL

Date	Page	Number
3/28/2018	1	186845

CUSTOMER

STATE006
Attn: Bob Ripley
State Nebr Capitol Commission
PO Box 94696
Lincoln, NE 685094696

PROJECT SITE

State Nebr Capitol Commission
Capitol Courtyards
Seasonal Maintenance
Lincoln, NE 685094696

Prepared By	Primary Phone	Sec. Phone	Site Ready	Payment Terms
-------------	---------------	------------	------------	---------------

DICK (402) 471-6691 05/01/2018 NET30

Prod. ID	Description	Size	UM	Qty	Price	Extended
15012	Seasonal Maintenance - 4 courtyards, 1 visit per month from May through October	NA	EA	6.00	0.00	0.00
15044	Roundup Application (Per Tank)- spray to kill all weeds and grasses growing in planting beds- 1 tank per courtyard	Tankful (2000 Sc	EA	24.00	48.75	1,170.00
17000	Labor-Deadhead old perennial blooms and trim shrubs after blooming to keep in size and shape- 4 courtyards an average of 3 hours per courtyard	Hour	HR	72.00	60.00	4,320.00
17020	Clean Up/Disposal Fee - clean up all trimmings and remove from site for disposal- 1 load per courtyard per month	Load	LOAD	24.00	60.00	1,440.00
58219	Bayer 3 in 1 Insect, Disease & Mite Control Conc.- 1 concentrate per courtyard for 3 applications	32 oz	EA	12.00	21.98	263.76
17000	Labor-Bayer application per courtyard per time- 2 hours each courtyard	Hour	HR	24.00	60.00	1,440.00
17006	Job Prep. Fee & Trip Charge	Reg	EA	6.00	55.00	330.00

Monthly maintenance from May through October at once a month visits. No tax applicable. See Dick if any ?

TOTAL :	\$8,953.76
----------------	-------------------

Most Campbell's plant material is guaranteed for 1 year from date of purchase. Proposal pricing is valid for 45 days from date of proposal. Campbell's cannot be responsible for cutting underground utility or irrigation lines. Please contact your Campbell's representative with any questions. Thank you for your business.

Accepted: _____

Date : ____ / ____ / ____



5625 Pine Lake Road
 Lincoln, NE 68516
 402-423-4556

PROPOSAL

Date	Page	Number
3/29/2018	1	186859

CUSTOMER

STATE006
 Attn: Bob Ripley
 State Nebr Capitol Commission
 PO Box 94696
 Lincoln, NE 685094696

PROJECT SITE

State Nebr Capitol Commission
 Capitol Courtyards
 Fall cleanup
 Lincoln, NE 685094696

Prepared By	Primary Phone	Sec. Phone	Site Ready	Payment Terms
-------------	---------------	------------	------------	---------------

DICK (402) 471-6691 11/01/2018 NET30

Prod. ID	Description	Size	UM	Qty	Price	Extended
----------	-------------	------	----	-----	-------	----------

15030	Maintenance, Fall Final Visit		EA	1.00	0.00	0.00
17000	Labor-Cut back all perennials and shrubs as needed to prepare each courtyard for winter- estimate 3 hour per courtyard	Hour	HR	12.00	60.00	720.00
17020	Clean Up/Disposal Fee- removal of all debris and trimmings from courtyards and disposed of at dump - estimate 2 hours per courtyard	Load	LOAD	8.00	60.00	480.00
17006	Job Prep. Fee & Trip Charge	Reg	EA	1.00	125.00	125.00

Fall cleanup of courtyards. No tax applicable. See Dick if any ?

TOTAL :	\$1,325.00
----------------	-------------------

Most Campbell's plant material is guaranteed for 1 year from date of purchase. Proposal pricing is valid for 45 days from date of proposal. Campbell's cannot be responsible for cutting underground utility or irrigation lines. Please contact your Campbell's representative with any questions. Thank you for your business.

Accepted: _____
 Date : ____/____/____



5625 Pine Lake Road
 Lincoln, NE 68516
 402-423-4556

PROPOSAL

Date	Page	Number
3/29/2018	1	186858

CUSTOMER
STATE006
 Attn: Bob Ripley
 State Nebr Capitol Commission
 PO Box 94696
 Lincoln, NE 685094696

PROJECT SITE
 State Nebr Capitol Commission
 Capitol Courtyards
 Fall bulb installation
 Lincoln, NE 685094696

Prepared By	Primary Phone	Sec. Phone	Site Ready	Payment Terms
DICK	(402) 471-6691		10/15/2018	NET30

Prod. ID	Description	Size	UM	Qty	Price	Extended
17000	Labor- Remove annuals from 4 courtyard beds and haul away for disposal - by wheelbarrow- estimate 3 hours per courtyard	Hour	HR	12.00	60.00	720.00
28724	Bulbs-Tulip-1096 each of Rose and White, Red and White, Red with white base, Pink	bulb	EA	4,384.00	0.90	3,945.60
58434	Mulch, Grade HB Dyed - freshen beds after bulb installation	per Cu. Yd.	YD	8.00	90.00	720.00
15022	Delivery Chg. for Bulk Mulch	Cu. Yd.	CU_YD	8.00	10.00	80.00
15023	Mulch, Bulk (Installation)	Cu. Yd.	CU_YD	8.00	47.50	380.00
15025	Equipment Rental- power buggy to move mulch to courtyards	NA	EA	1.00	185.00	185.00
17000	Labor-Time to move mulch to each courtyard- estimated as 2 hours per courtyard	Hour	HR	8.00	60.00	480.00
17006	Job Prep. Fee & Trip Charge	Reg	EA	2.00	125.00	250.00

Special installed fall bulb prices. No tax applicable. Dick will spot.

TOTAL : \$6,760.60

Most Campbell's plant material is guaranteed for 1 year from date of purchase. Proposal pricing is valid for 45 days from date of proposal. Campbell's cannot be responsible for cutting underground utility or irrigation lines. Please contact your Campbell's representative with any questions. Thank you for your business.

Accepted: _____
 Date : ___/___/___



5625 Pine Lake Road
Lincoln, NE 68516
402-423-4556

PROPOSAL

Date	Page	Number
3/29/2018	1	186856

CUSTOMER

STATE006
Attn: Bob Ripley
State Nebr Capitol Commission
PO Box 94696
Lincoln, NE 685094696

PROJECT SITE

State Nebr Capitol Commission
Annual Flowers
Supply and Install
Lincoln, NE 685094696

Prepared By	Primary Phone	Sec. Phone	Site Ready	Payment Terms
-------------	---------------	------------	------------	---------------

DICK (402) 471-6691 05/10/2018 NET30

Prod. ID	Description	Size	UM	Qty	Price	Extended
----------	-------------	------	----	-----	-------	----------

17007	Bed Preparation (Rototilling With Amendments)	sq. ft.	SQ_FT	800.00	1.00	800.00
15204	Compost, Bulk City	Yd. (1/2 Screene	CU_YD	8.00	25.00	200.00
15206	Delivery Chg. For Compost	Cu. Yd.	CU_YD	8.00	10.00	80.00
15205	Compost, Installation	Cu. Yd.	CU_YD	8.00	55.00	440.00
15025	Equipment Rental- dumpster for hauling compost to site	25 yard	EA	1.00	815.00	815.00
15025	Equipment Rental - power buggy on wheels	4' wide, 16 cu. ft.	per day	1.00	185.00	185.00
17000	Labor-Time to move materials to each courtyard- estimate 3 person crew for one day	Hour	HR	24.00	60.00	1,440.00
25525	Petunia, Supertunia 274 each of Pink, Purple, Red and Blue	4.5" pot	EA	1,096.00	7.23	7,924.08
58434	Mulch, Grade HB Dyed- install around annuals after installation	per Cu. Yd.	YD	8.00	90.00	720.00
15022	Delivery Chg. for Bulk Mulch	Cu. Yd.	CU_YD	8.00	10.00	80.00
15023	Mulch, Bulk (Installation)	Cu. Yd.	CU_YD	8.00	47.50	380.00
15025	Equipment Rental-power buggy to move materials to courtyards	4', 16 cu. ft.	EA	1.00	185.00	185.00
15025	Equipment Rental- dumpster to bring materials to site	25 yd	EA	1.00	815.00	815.00
17006	Job Prep. Fee & Trip Charge	Reg	EA	2.00	125.00	250.00

Special installed seasonal annual flowers. No tax applicable. Dick will spot.

TOTAL :	\$14,314.08
----------------	--------------------

Most Campbell's plant material is guaranteed for 1 year from date of purchase. Proposal pricing is valid for 45 days from date of proposal. Campbell's cannot be responsible for cutting underground utility or irrigation lines. Please contact your Campbell's representative with any questions. Thank you for your business.

Accepted: _____

Date : ____ / ____ / ____



5625 Pine Lake Road
 Lincoln, NE 68516
 402-423-4556

PROPOSAL

Date	Page	Number
3/28/2018	1	186844

CUSTOMER

STATE006
 Attn: Bob Ripley
 State Nebr Capitol Commission
 PO Box 94696
 Lincoln, NE 685094696

PROJECT SITE

State Nebr Capitol Commission
 PO Box 94696
 maintenance
 Lincoln, NE 685094696

Prepared By	Primary Phone	Sec. Phone	Site Ready	Payment Terms
-------------	---------------	------------	------------	---------------

DICK (402) 471-6691 04/02/2018 NET30

Prod. ID	Description	Size	UM	Qty	Price	Extended
15009	Maintenance, Spring Prep Visit	NA	EA	1.00	0.00	0.00
17000	Labor-Cut back all roses and perennials to prepare for spring growth- 4 courtyards at 3 hours each	Hour	HR	12.00	60.00	720.00
17020	Clean Up/Disposal Fee- clean up all trimmings and remove from site for disposal- 4 courtyards- 1.5 hrs. each	Load	LOAD	6.00	60.00	360.00
17060	Pre-Emerg. Herb. (Snapshot,lb.) APPLICATION	PER SQ. FT.	SqFtSnapshot	7,450.00	0.08	596.00
58434	Mulch, Grade HB Dyed - 1/2 original amount for 4 courtyards	per Cu. Yd.	YD	37.25	85.00	3,166.25
15025	Equipment Rental - power buggy on wheels to move mulch to courtyards- 4 courtyards- 1 day each courtyard	4' wide, 16 cu ft.	per day	4.00	185.00	740.00
15025	Equipment Rental- dumpster to haul mulch to site	25 yard	per dump	3.00	815.00	2,445.00
17006	Job Prep. Fee & Trip Charge	Reg	EA	4.00	125.00	500.00

Special spring cleanup of 4 courtyards plus applicable tax. Dick will spot.

TOTAL :	\$8,527.25
----------------	-------------------

Most Campbell's plant material is guaranteed for 1 year from date of purchase. Proposal pricing is valid for 45 days from date of proposal. Campbell's cannot be responsible for cutting underground utility or irrigation lines. Please contact your Campbell's representative with any questions. Thank you for your business.

Accepted: _____
 Date : ___/___/___



FINISHING THE CAPITOL COURTYARD GARDENS

Marketing Plan and Budget

1. Create FB page for State Capitol and Capitol Courtyard Gardens.
2. Outreach to garden clubs in Nebraska and regionally.
3. Ask Extension Service at the University to publicize to Master Gardeners in Nebraska and at other Land Grant Universities.
4. Promote meetings and conferences to landscape architects, regional garden clubs, arboretums, nursery professionals and arborists.
5. Pitch feature articles in Midwest Living, Nebraska Life and other publications.
6. Plan free events and open houses to create awareness of the gardens.
7. Pitch a feature for "Nebraska Stories" as a followup production by Nebraska Educational Television.
8. Invite regional tour operators to tour gardens.
9. Propose a Nebraska Passport designation for 2020 and 2026.
10. Position the Capitol and courtyards as a premier historic, architectural and botanical site. Invite other public gardens in Lincoln (i.e. Maxwell, Sunken, Hamann, UNL City and East Campus, etc.) to join in promotion. Promote information via rest stops, hotels and motels, LCVB, FB and websites.

BUDGET: \$5,000



5625 Pine Lake Road
 Lincoln, NE 68516
 402-423-4556

PROPOSAL

Date	Page	Number
2/5/2018	1	185894

CUSTOMER
 STATE006
 Attn: Bob Ripley
 State Nebr Capitol Commission
 PO Box 94696
 Lincoln, NE 685094696

PROJECT SITE
 State Capitol Courtyards
 entire courtyard irrigation
 Lincoln, NE 685094696

Prepared By	Primary Phone	Sec. Phone	Site Ready	Payment Terms
-------------	---------------	------------	------------	---------------

DICK (402) 471-6691 06/01/2018 NET30

Prod. ID	Description	Size	UM	Qty	Price	Extended
----------	-------------	------	----	-----	-------	----------

17018	Labor, Subcontract- irrigation as per specs and plans per courtyard	EA	EA	4.00	14,750.00	59,000.00
-------	---	----	----	------	-----------	-----------

Special supplied and installed irrigation system per courtyard. No tax applicable. See Dick if any ?

TOTAL :	\$59,000.00
----------------	--------------------

Most Campbell's plant material is guaranteed for 1 year from date of purchase. Proposal pricing is valid for 45 days from date of proposal. Campbell's cannot be responsible for cutting underground utility or irrigation lines. Please contact your Campbell's representative with any questions. Thank you for your business.

Accepted: _____

Date : ____/____/____



5625 Pine Lake Road
Lincoln, NE 68516
402-423-4556

PROPOSAL

Date	Page	Number
2/9/2018	2	185952

CUSTOMER

STATE006
Attn: Bob Ripley
State Nebr Capitol Commission
PO Box 94696
Lincoln, NE 685094696

PROJECT SITE

Capitol Courtyards
Landscaping outside walkway
Lincoln, NE 685094696

Prepared By	Primary Phone	Sec. Phone	Site Ready	Payment Terms
-------------	---------------	------------	------------	---------------

Ryan (402) 471-6691 04/01/2020 NET30

Prod. ID	Description	Size	Unit	Qty	Price	Extended
17007	Bed Preparation (Rototilling With Amendments)	sq. ft.	SQ_FT	2,240.00	1.00	2,240.00
52600	MycoApply Endo	40# bag	EA	4.00	555.00	2,220.00
52600	Edging, Black Aluminum Metal Edging for along sidewalk edge	4"	EA	300.00	4.70	1,410.00
00241	Privet, Lodense	#1 cont	EA	203.00	29.97	6,083.91
01999	Plum, purple leaf	#5 cont	EA	16.00	2.00	32.00
03331	Lilac, Ludwig Spaeth French	#5 cont	EA	4.00	104.97	419.88
09482	Lilac, Charles Joly French	#5 cont	EA	4.00	104.97	419.88
01999	Lilac, Marie Legrave	#5 cont	EA	4.00	104.97	419.88
01999	Lilac, Michael Buchner	#5 cont	EA	4.00	104.97	419.88
01999	Lilac, Chas X	#5 ont	EA	4.00	104.97	419.88
01999	Lilac, President Grevy	#5 cont	EA	4.00	104.97	419.88
05527	Mockorange, Snowbelle	#3 cont	EA	16.00	59.97	959.52
02255	Fringetree, White	#5 cont	EA	8.00	148.47	1,187.76
04351	Weigelia, Sonic Bloom Pink	#3 cont	EA	4.00	74.97	299.88
03873	Weigelia, Sonic Bloom Red	#3 cont	EA	4.00	74.97	299.88
06164	Viburnum, Arrowwood	#5 cont	EA	4.00	97.47	389.88
06187	Viburnum, American Highbush	#5 cont	EA	8.00	97.47	779.76
05851	Althea, White Chiffon	#6 cont	EA	4.00	104.97	419.88
05849	Althea, Red Heart	#6 cont	EA	4.00	104.97	419.88
03456	Althea, Blushing Bride	#7 cont	EA	4.00	148.47	593.88
01999	Desmodium penduliflorum- showy tick trefoil	#2 cont	EA	32.00	59.97	1,919.04
02110	Potentilla, Goldfinger	#3 cont	EA	56.00	59.97	3,358.32
01999	Rose, Mme Plantier	#3 cont	EA	24.00	59.97	1,439.28
01999	Sorbaria Sorbifolia - False Ural Spirea	#2 cont	EA	28.00	52.47	1,469.16

Continued Next Page ...

Most Campbell's plant material is guaranteed for 1 year from date of purchase. Proposal pricing is valid for 45 days from date of proposal. Campbell's cannot be responsible for cutting underground utility or irrigation lines. Please contact your Campbell's representative with any questions. Thank you for your business.



5625 Pine Lake Road
 Lincoln, NE 68516
 402-423-4556

PROPOSAL

Date	Page	Number
2/9/2018	1	185952

CUSTOMER
 STATE006
 Attn: Bob Ripley
 State Nebr Capitol Commission
 PO Box 94696
 Lincoln, NE 685094696

PROJECT SITE
 Capitol Courtyards
 Landscaping outside walkway
 Lincoln, NE 685094696

Prepared By	Primary Phone	Sec. Phone	Site Ready	Payment Terms
-------------	---------------	------------	------------	---------------

Ryan	(402) 471-6691		04/01/2020	NET30
------	----------------	--	------------	-------

Prod. ID	Description	Size	UM	Qty	Price	Extended
15025	Equipment Rental - power buggy on wheels	4' wide, 16 cu ft	per month	2.00	1,475.00	2,950.00
15025	Equipment Rental- dumpsters for disposal of debris and bringing materials to Capitol north door	25 yard	EA	1.00	850.00	850.00
52600	Plastic sheeting	10' x 100' roll	EA	16.00	50.00	800.00
52600	Exterior grade MDF board- reuse materials from earlier installation	4' x 8' x 3/4"	EA	1.00	0.00	0.00
17000	Labor-Installation of plastic sheeting and MDF board in courtyards	Hour	HR	48.00	60.00	2,880.00
02203	Soil Tests	NA	EA	4.00	43.50	174.00
15495	Draintile, 4" Perforated WITH SOCK	4" Diam	LIN_FT	500.00	2.00	1,000.00
15448	Draintile, 4" End Cap	4"	EA	32.00	8.25	264.00
15444	Draintile, 4" Tee	4"	EA	16.00	13.25	212.00
15115	Rock, Roofing Gravel	T/160 Sq.Ft.	TON	3.50	55.00	192.50
15113	Rock, Roofing Gravel Delivery	Load	TON	3.50	10.00	35.00
15114	Rock, Roofing Gravel Installation	Ton/160 Sq.Ft.	TON	3.50	80.00	280.00
15465	Draintile, 3-4" Perf Inst/Gravel & Soil Rmvl	linear ft. (3"- 4")	LIN_FT	500.00	12.50	6,250.00
15643	Catch Basin, 2 Outlet Box	9" Square	EA	32.00	87.50	2,800.00
15443	Catch Basin, Grate - BLACK	9" Square	EA	32.00	45.00	1,440.00
17000	Labor-Cut into existing metal drain pipe and hook drain tile into pipe for proper drainage	Hour	HR	12.00	60.00	720.00
17000	Labor-bore under existing sidewalk to get draintile to metal drain pipe	Hour	HR	16.00	60.00	960.00
15204	Compost, Bulk City	Yd. (1/2 Screen)	CU_YD	22.50	25.00	562.50
15206	Delivery Chg. For Compost	Cu. Yd.	CU_YD	22.50	10.00	225.00
15205	Compost, Installation	Cu. Yd.	CU_YD	22.50	50.00	1,125.00

Continued Next Page ...

Most Campbell's plant material is guaranteed for 1 year from date of purchase. Proposal pricing is valid for 45 days from date of proposal. Campbell's cannot be responsible for cutting underground utility or irrigation lines. Please contact your Campbell's representative with any questions. Thank you for your business.



5625 Pine Lake Road
Lincoln, NE 68516
402-423-4556

PROPOSAL

Date	Page	Number
2/9/2018	3	185952

CUSTOMER
STATE006
Attn: Bob Ripley
State Nebr Capitol Commission
PO Box 94696
Lincoln, NE 685094696

PROJECT SITE
Capitol Courtyards
Landscaping outside walkway
Lincoln, NE 685094696

Prepared By	Primary Phone	Sec. Phone	Site Ready	Payment Terms
-------------	---------------	------------	------------	---------------

Ryan (402) 471-6691 04/01/2020 NET30

Prod. ID	Description	Size	UM	Qty	Price	Extended
09470	Spirea, Bridalwreath	#2 cont	EA	32.00	52.47	1,679.04
04714	Kerria, Double Flowering Japanese	#5 cont	EA	20.00	89.97	1,799.40
01999	Rosa glauca (rubrifolia)	#3 cont	EA	28.00	59.97	1,679.16
01381	St Johnswort, Sunburst - (Hypericum aureum)	#2 cont	EA	28.00	67.47	1,889.16
01999	Rosa, grootendorst	#3 cont	EA	28.00	59.97	1,679.16
05527	Mockorange, Snowbelle - (Philadelphus Glacier"	#3 cont	EA	24.00	59.97	1,439.28
01999	Spirea, Froebella	#3 cont	EA	64.00	52.47	3,358.08
01999	Rosa, Hugonis	#3 cont	EA	24.00	59.97	1,439.28
05035	Quince, Double Take Scarlet Storm	#2 cont	EA	24.00	89.97	2,159.28
05748	Mockorange, Mini. Snowflake	#3 cont	EA	24.00	59.97	1,439.28
01999	Kolkwitzia, Amabilis - Beautybush - Dream Catcher	#2 cont	EA	24.00	52.47	1,259.28
01775	Burning Bush, Compact	#5 cont	EA	24.00	89.97	2,159.28
01999	Rosa, rugosa "Hansa"	#3 cont	EA	24.00	59.97	1,439.28
00319	Viburnum, Dwarf Fragrant - Carlesi	#3 cont	EA	24.00	59.97	1,439.28
01961	Hydrangea, Annabelle - A. G. Hydrangea	#5 cont	EA	72.00	97.47	7,017.84
10022	Hydrangea, Little Lime- P.G. Hydrangea	#5 cont	EA	100.00	104.97	10,497.00
01164	Sweetshrub, Carolona Allspice	#5 cont	EA	12.00	97.47	1,169.64
03431	Summersweet, Hummingbird - Clethra	#5 cont	EA	48.00	104.97	5,038.56
58434	Mulch, Grade HB Dyed	per Cu. Yd.	YD	22.50	87.50	1,968.75
15022	Delivery Chg. for Bulk Mulch	Cu. Yd.	CU_YD	22.50	10.00	225.00
17000	Labor-Move mulch from north entrance to each courtyard	Hour	HR	24.00	60.00	1,440.00
17006	Job Prep. Fee & Trip Charge	Reg	EA	39.00	125.00	4,875.00

TOTAL : \$108,851.34

Most Campbell's plant material is guaranteed for 1 year from date of purchase. Proposal pricing is valid for 15 days from date of proposal. Campbell's cannot be responsible for cutting underground utility or irrigation lines. Please contact your Campbell's representative with any questions. Thank you for your business.



5625 Pine Lake Road
 Lincoln, NE 68516
 402-423-4556

PROPOSAL

Date	Page	Number
2/9/2018	4	185952

CUSTOMER
 STATE006
 Attn: Bob Ripley
 State Nebr Capitol Commission
 PO Box 94696
 Lincoln, NE 685094696

PROJECT SITE
 Capitol Courtyards
 Landscaping outside walkway
 Lincoln, NE 685094696

Prepared By	Primary Phone	Sec. Phone	Site Ready	Payment Terms
Ryan	(402) 471-6691		04/01/2020	NET30

Prod. ID	Description	Size	UM	Qty	Price	Extended
----------	-------------	------	----	-----	-------	----------

Special installed plant prices. No tax applicable. Dick will spot.

TOTAL : \$108,851.34

Most Campbell's plant material is guaranteed for 1 year from date of purchase. Proposal pricing is valid for 45 days from date of proposal. Campbell's cannot be responsible for cutting underground utility or irrigation lines. Please contact your Campbell's representative with any questions. Thank you for your business.

Accepted: _____

Date : ___ / ___ / ___



5625 Pine Lake Road
Lincoln, NE 68516
402-423-4556

PROPOSAL

Date	Page	Number
1/18/2018	1	185866

CUSTOMER

STATE006
 Attn: Bob Ripley
 State Nebr Capitol Commission
 PO Box 94696
 Lincoln, NE 685094696

PROJECT SITE

 State Capitol Courtyards
 4 courtyards- inside walkways
 New landscape plantings
 Lincoln, NE 685094696

Prepared By	Primary Phone	Sec. Phone	Site Ready	Payment Terms
DICK	(402) 471-6691		06/01/2018	NET30

Prod. ID	Description	Size	U/M	Qty	Price	Extended
17009	Skimming, Sod	sq. ft.	SQ_FT	3,300.00	0.95	3,135.00
17000	Labor-Haul out north door to dumpster to haul away	Hour	HR	64.00	55.00	3,520.00
17000	Labor-Removal of all existing plantings in 4 courtyards	Hour	HR	24.00	55.00	1,320.00
15025	Equipment Rental - power buggy on wheels	4' wide, 16 cu. ft.	per month	2.00	1,475.00	2,950.00
15025	Equipment Rental- dumpsters for disposal and to bring materials to site	25 yard	per dump	40.00	815.00	32,600.00
52600	Plastic Sheeting	10' x 100' roll	EA	16.00	50.00	800.00
52600	Exterior Grade MDF Board	4' x 8' x 3/4"	EA	280.00	62.35	17,458.00
17000	Labor-Installation of plastic sheeting and MDF board	Hour	HR	48.00	55.00	2,640.00
02203	Soil Tests	NA	EA	4.00	43.50	174.00
15495	Drain tile, 4" Perforated WITH SOCK	4" Diam	LIN_FT	1,200.00	2.00	2,400.00
15448	Drain tile, 4" End Cap	4"	EA	32.00	8.25	264.00
15444	Drain tile, 4" Tee	4"	EA	16.00	13.25	212.00
15115	Rock, Roofing Gravel	T/160 Sq.Ft.	TON	7.50	55.00	412.50
15113	Rock, Roofing Gravel Delivery	Load	TON	7.50	10.00	75.00
15114	Rock, Roofing Gravel Installation	Ton/160 Sq.Ft.	TON	7.50	70.00	525.00
15465	Drain tile, 3-4" Perf Inst/Gravel & Soil Rmvl	linear ft. (3"- 4")	LIN_FT	1,200.00	12.50	15,000.00
15643	Catch Basin, 2 Outlet Box	9" Square	EA	32.00	87.50	2,800.00
15443	Catch Basin, Grate - BLACK	9" Square	EA	32.00	45.00	1,440.00
17000	Labor-cut into existing metal drain pipe and hook drain tile into pipe for proper drainage	Hour	HR	12.00	55.00	660.00
15204	Compost, Bulk City	Yd. (1/2 Screene	CU_YD	35.00	22.50	787.50

Continued Next Page ...

Most Campbell's plant material is guaranteed for 1 year from date of purchase. Proposal pricing is valid for 45 days from date of proposal. Campbell's cannot be responsible for cutting underground utility or irrigation lines. Please contact your Campbell's representative with any questions. Thank you for your business.



5625 Pine Lake Road
Lincoln, NE 68516
402-423-4556

PROPOSAL

Date	Page	Number
1/18/2018	2	185866

CUSTOMER
STATE006
Attn: Bob Ripley
State Nebr Capitol Commission
PO Box 94696
Lincoln, NE 685094696

PROJECT SITE
State Capitol Courtyards
4 courtyards- inside walkways
New landscape plantings
Lincoln, NE 685094696

Prepared By	Primary Phone	Sec Phone	Site Ready	Payment Terms
DICK	(402) 471-6691		06/01/2018	NET30

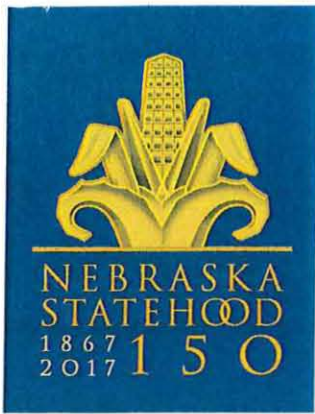
Prod. ID	Description	Size	UM	Qty	Price	Extended
15206	Delivery Chg. For Compost	Cu. Yd.	CU_YD	35.00	10.00	350.00
15205	Compost, Installation	Cu. Yd.	CU_YD	35.00	47.50	1,662.50
17007	Bed Preparation (Rototilling With Amendments)	sq. ft.	SQ_FT	3,300.00	1.00	3,300.00
52600	MycoApply Endo	40# bag	EA	4.00	555.00	2,220.00
52600	Edging, Black Aluminum Metal Edging	4"	lin ft.	1,760.00	4.70	8,272.00
00241	Privet, Lodense	#1 cont	EA	1,600.00	29.97	47,952.00
01999	Rose, Sexy Remy	#3 cont	EA	102.00	37.47	3,821.94
25760	Floribunda Rose, Oh My!	#3 cont	EA	102.00	37.47	3,821.94
01999	Rose, Europeana	#3 cont	EA	102.00	37.47	3,821.94
25817	Floribunda Rose, Easy Going	#3 cont	EA	102.00	37.47	3,821.94
25525	Petunia, Supertunia 274 each of Pink, Purple, Red and Blue	4.5" pot	EA	1,096.00	7.23	7,924.08
28724	Bulbs - Tulip-1096 each of Rose and White, Red and White, red with white base, pink	bulb	EA	4,384.00	0.90	3,945.60
58188	Sod, Fescue - Per Sq. Ft.	Sq. Ft.	SQ_FT	6,336.00	1.00	6,336.00
17000	Labor-Move sod from north doors to each courtyard	Hour	HR	24.00	55.00	1,320.00
58434	Mulch, Grade HB Dyed- supplied and installed	per Cu. Yd.	YD	52.00	87.50	4,550.00
15022	Delivery Chg. for Bulk Mulch	Cu. Yd.	CU_YD	52.00	10.00	520.00
17000	Labor-Move mulch from north entrance to courtyards	Hour	HR	48.00	60.00	2,880.00
17006	Job Prep. Fee & Trip Charge	Reg	EA	63.00	125.00	7,875.00

Special installed plant prices plus tax if applicable. See Dick if any ?

TOTAL :	\$203,587.94
----------------	---------------------

Most Campbell's plant material is guaranteed for 1 year from date of purchase. Proposal pricing is valid for 45 days from date of proposal. Campbell's cannot be responsible for cutting underground utility or irrigation lines. Please contact your Campbell's representative with any questions. Thank you for your business.

Accepted: _____
Date : ___/___/___



July 19, 2018

**Nebraska 150
Foundation Board**

- Jeff Searcy, Chair, Lincoln
- Eric Brown, Vice Chair, Lincoln
- Jose Garcia, Secretary, Omaha
- Phil Bangert, Treasurer, Seward
- Sara Crook, Ex. Subcomm., Peru
- Nancy Fulton, Ex. Subcomm., Wilber
- Kay Kimberly, Ex. Subcomm., Big Springs
- Jamie Moore, Ex. Subcomm., Bellevue
- Allen Beermann, Lincoln
- Ken Bunger, Omaha
- Judi gaiashkbos, Lincoln
- Sally Ganem, Fremont
- Mick Hale, Omaha
- Dan Holtz, Nebraska City
- Clark Kolterman, Seward
- Roger Lemple, Lincoln
- Jim McKee, Lincoln
- Kathy McKillip, Lincoln
- Becci Thomas, Alliance
- Roger Wehrbein, Plattsmouth
- Regan Anson, ex-off.
- Amanda Mobley Guenther, ex-off. Administrative Coordinator, Lincoln
- Michael J. Smith, ex-off. Nebraska State Historical Society Lincoln
- Steven Guenzel, ex-off. Legal Counsel, Lincoln

Jeff Maul

Dear Mr. Maul and members of the Visitors Promotion Committee,

The Friends of the Nebraska 150 Foundation strongly supports the effort by members of the Nebraska Association of State Legislators Association to raise \$1.4 million to restore the landscapes and finish the four courtyards located inside our National Landmark State Capitol.

In May, members of our board approved a \$50,000 grant for this project that fits perfectly with our mission to honor the heritage and celebrate the great State of Nebraska. We are grateful for their efforts to put the finishing touches on the courtyards and achieve Capitol Architect Bertram Goodhue's vision. Once this project is completed, our National Landmark State Capitol will be an even greater source of pride for all Nebraskans, and visitors from all over the world.

We encourage you to support their request for funding, which will provide enormous momentum and inspire others to get involved, as well as encourage even more visits to one of our state's most popular tourist attractions.

Thank you for your consideration.

Sincerely,

Jeff Searcy, Chair
Friends of the Nebraska 150 Foundation
jeff@searcyteam.com
(402) 430-7978

**Nebraska 150
Foundation Friends**

- Cheryl Clark, Elwood
- Cloyd Clark, McCook
- Edgar Hicks, Omaha
- Lynne Ireland
Nebraska State Historical Society
Lincoln
- Bob Marshall, Lincoln
- James Potter
Nebraska State Historical Society
Lincoln
- Bill Pratt, Omaha
- Larry Ruth, Walton
- Chris Sommerich
Humanities Nebraska, Lincoln
- James Swenson
Nebraska Game and Parks, Lincoln
- Suzanne Wise
Nebraska Arts Council, Omaha
- Bryan Zimmer, Omaha

The Nebraska 150 Foundation



July 20, 2018

Visitors Promotion Committee
Lincoln Convention and Visitors Bureau
Attn: Jeff Maul, Executive Director
1128 Lincoln Mall, Suite 100
Lincoln, Nebraska 68508

Re: Capitol Courtyard Gardens Restoration Project


Mr. Maul and Grant Committee Members:

It is with our Office's greatest enthusiasm I write in support of the grant application for the Capitol Courtyard Gardens Restoration Project. This broad-based effort will restore the final exterior elements of Nebraska landscape architect, Ernst H. Herminghaus' historic 1934 design.

In celebration of Nebraska's Sesquicentennial last year, we installed and dedicated the fountains in each courtyard. The Courtyard Gardens will be the final and most glorious of the finishing touches. With the completed gardens we'll see even more visits and tours at the Capitol and in our City.

We ask the Grant Committee to consider this request, as these resources will help fund a project that will have lasting value for our National Landmark Nebraska Capitol and our Capital City.

For the Office of the Capitol Commission,


Robert C. Ripley, FAIA
Nebraska Capitol Administrator

cc: Nebraska Capitol Commission Members: Pete Ricketts, Governor; Jim Scheer, Speaker of the Legislature; Michael Heavican, Chief Justice Supreme Court; Katherine Ankerson, Dean UNL College of Architecture; Trevor Jones, Executive Director and CEO Nebraska State Historical Society; Doug Carey, Congressional District 1; Thomas Sanderson, Congressional District 2; John Hansen, Congressional District 3



Nebraska Association of Former State Legislators

July 24, 2018

Visitors Promotion Committee
Lincoln Convention and Visitors Bureau
Attn: Jeff Maul, Executive Director
1128 Lincoln Mall, Suite 100
Lincoln, NE 68508

Dear Members of the Visitors Promotion Committee:

The Nebraska Legislature, through the leadership of Senators John Nelson, Heath Mello and the members of the Appropriations Committee, included a request for a \$3.1 million State appropriation for the Capitol courtyard fountains. The budget was adopted and the fountains were installed in the fall of 2017. The state funds did not cover the cost of landscaping, plants, and grass for the areas around the fountains, as well as the irrigation systems. In March of 2018, the Association of Former State Legislators voted to launch a \$1.4 million campaign to landscape the courtyard gardens.

The campaign goal includes \$300,000 for plants, irrigation, drainage, etc. \$100,000 for costs and contingencies and \$1 million for an endowment fund for future maintenance. The endowment will ensure the gardens will remain beautiful for future generations. Legislation to create the endowment fund will be introduced in the 2019 session.

As part of our campaign strategy, we are asking former and current State Senators to join the Senator's Club with a \$1,000 donation. To date, we have nearly 30 former Senators from across the state as members of the Senator's Club. Senators Patty Pansing Brooks of Lincoln and Matt Williams of Gothenburg will be sending a letter to current Senators later this summer, inviting them to support our effort.

On behalf of our 177 members, I appreciate your thoughtful consideration of this project. Your investment will help encourage tourism interest in the Capitol as well as other public garden areas in Lincoln. We hope that your generosity will inspire others to give. Together we can complete the vision that Bertram Goodhue had for our beautiful State Capitol.

Sincerely,

A handwritten signature in purple ink that reads "Tom Carlson". The signature is written in a cursive, flowing style.

Tom Carlson, President
Nebraska Association of Former State Legislators
2412 Rokeby Road
Lincoln, Nebraska 68512
308-991-5460
serveddistrict38@gmail.com

Board Members: Senators Marian Price, Curt Bromm, Jim Jensen, Bill Avery, Ed Schrock, Jim Cudaback

INTERNAL REVENUE SERVICE
P. O. BOX 2508
CINCINNATI, OH 45201

DEPARTMENT OF THE TREASURY

FEB 24 2016

Date:

CELEBRATING NEBRASKA STATEHOOD INC
C/O CHRISTINA L USHER
134 S 13TH ST STE 1200
LINCOLN, NE 68508

Employer Identification Number:
47-4867912
DLN:
17053023757026
Contact Person:
MS. LEE ID# 31208
Contact Telephone Number:
(877) 829-5500
Accounting Period Ending:
December 31
Public Charity Status:
170(b)(1)(A)(vi)
Form 990/990-EZ/990-N Required:
Yes
Effective Date of Exemption:
August 10, 2015
Contribution Deductibility:
Yes
Addendum Applies:
No

Dear Applicant:

We're pleased to tell you we determined you're exempt from federal income tax under Internal Revenue Code (IRC) Section 501(c)(3). Donors can deduct contributions they make to you under IRC Section 170. You're also qualified to receive tax deductible bequests, devises, transfers or gifts under Section 2055, 2106, or 2522. This letter could help resolve questions on your exempt status. Please keep it for your records.

Organizations exempt under IRC Section 501(c)(3) are further classified as either public charities or private foundations. We determined you're a public charity under the IRC Section listed at the top of this letter.

If we indicated at the top of this letter that you're required to file Form 990/990-EZ/990-N, our records show you're required to file an annual information return (Form 990 or Form 990-EZ) or electronic notice (Form 990-N, the e-Postcard). If you don't file a required return or notice for three consecutive years, your exempt status will be automatically revoked.

If we indicated at the top of this letter that an addendum applies, the enclosed addendum is an integral part of this letter.

For important information about your responsibilities as a tax-exempt organization, go to www.irs.gov/charities. Enter "4221-PC" in the search bar to view Publication 4221-PC, Compliance Guide for 501(c)(3) Public Charities, which describes your recordkeeping, reporting, and disclosure requirements.

Letter 947

CELEBRATING NEBRASKA STATEHOOD INC

We sent a copy of this letter to your representative as indicated in your power of attorney.

Sincerely,

A handwritten signature in black ink, appearing to read "Jeffrey I. Cooper". The signature is stylized with a large initial "J" and a long horizontal stroke at the end.

Jeffrey I. Cooper
Director, Exempt Organizations
Rulings and Agreements



FINISHING THE CAPITOL COURTYARD GARDENS

OUR DONORS

(as of July 25, 2018)

West Chamber Society

Rhonda Seacrest

Supreme Court Club

Friends of the NE 150 Foundation

Friends of the Capitol Courtyards

Cornhusker Bank

Alice Dittman

Senator's Club

All State Senators, current and former, donating \$1,000 or more

Former State Senator Greg and Julie Adams

Former State Senator Doug and Louise Bereuter

Former State Senator Chris and Judy Beutler

Former State Senator Curt and Vicki Bromm

Former State Senator Kathy Campbell

Former State Senator Tom and Margo Carlson

Former State Senator Mike Gloor

Former State Senator Tim Hall

Former State Senator Bill Harris (In memory of) by MarySue Harris

Former State Senator Stephanie Johanns

Former State Senator Joyce Hillman-Kortum

Former State Senator James and Joan Jensen

Former State Senator Dr. Joel and Jill Johnson

Former State Senator John Lindsay

Former State Senator Stephanie Johanns

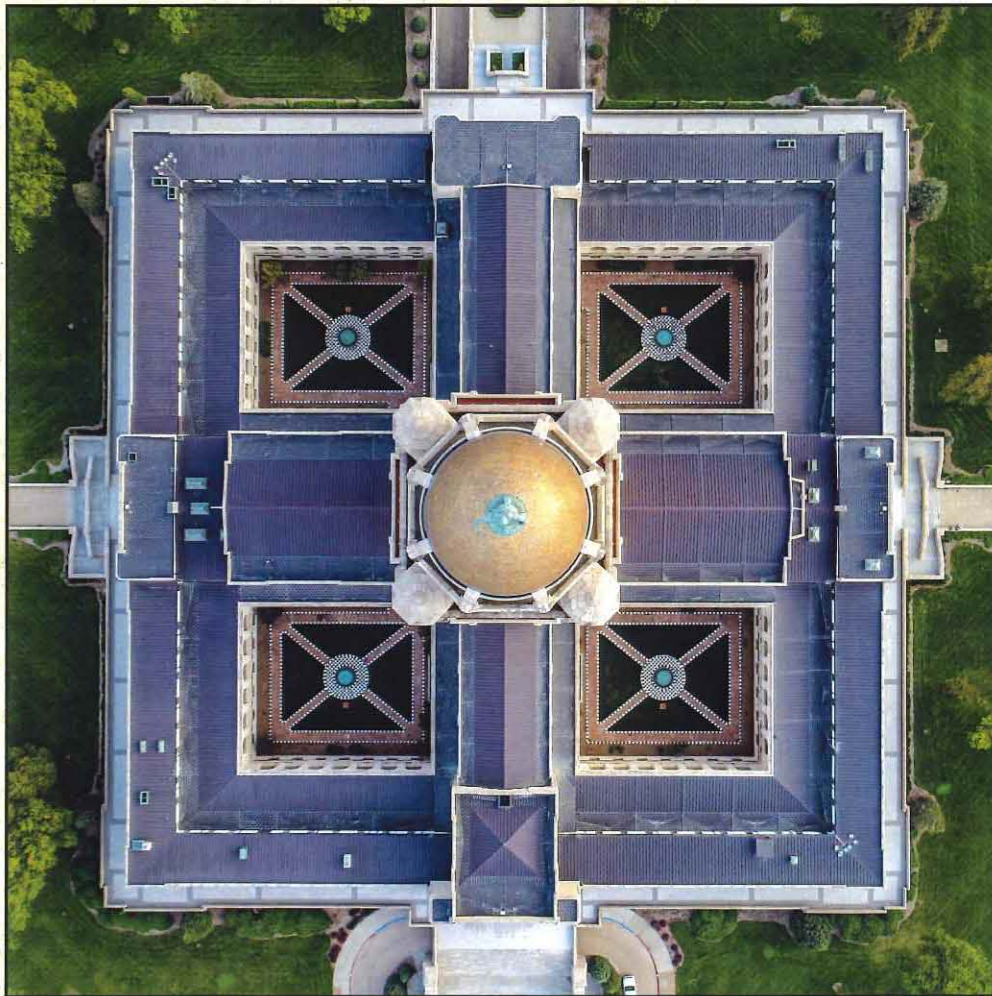
Former State Senator Gerald and Lee-Ellen Matzke

Former State Senator Vickie McDonald

Former State Senator Scott and Danene Moore



FINISHING THE CAPITOL COURTYARD GARDENS

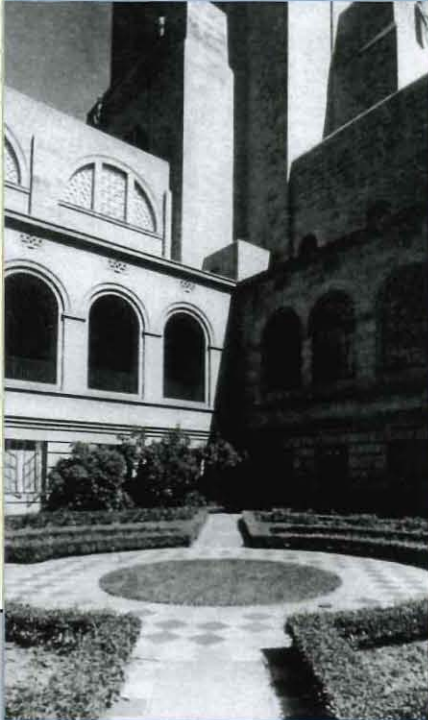


NEBRASKA STATE CAPITOL

The Courtyard Gardens are the missing pieces of the original Capitol design. Now that the fountains are completed, restoring the gardens will complete our site. It's a unique opportunity all Nebraskans have to help put the finishing touches on our beautiful National Landmark State Capitol."

— Robert C. Ripley, Nebraska Capitol Administrator

THE NEBRASKA CAPITOL COURTYARDS



Unfinished courtyards, circa 1934.



Today, the fountains are in place, awaiting the landscape restoration of the courtyards to make the builder's vision complete.

Photos provided by the Office of the Nebraska Capitol Commission.



FINISHING THE CAPITOL COURTYARD GARDENS

OUR PURPOSE

When construction of the Nebraska State Capitol concluded in 1932, a lack of resources stemming from the Great Depression put completion of the building's four courtyards on hold. Nearly 86 years later in 2017, Nebraskans celebrated the long-awaited installation of the fountains – just in time for the state's sesquicentennial. The \$3.1 million investment brought the Capitol one step closer to completion. Today, the only piece that remains is restoration of the courtyard landscape.

The Nebraska Association of Former State Legislators is leading a campaign to raise \$1.4 million to finish this decades old project. The funds will provide for the installation of an irrigation and drainage system, plantings, and the creation of an endowment for ongoing care and maintenance. Once complete, Capitol Architect Bertram Goodhue's vision for our State Capitol will be finally realized and future generations of Nebraskans can enjoy these beautiful retreats for years to come.

HISTORY

The office of Capitol Architect Bertram Goodhue selected Nebraska native Ernst H. Herminghaus to create a landscape plan for the four courtyards. His education and training in landscape architecture, and his understanding of Nebraska's geography, climate and plant material qualified him to fulfill Goodhue's vision of a landscape to enhance and complement the monumental building.

The courtyards were landscaped following the Herminghaus plan in 1934 but lack of resources resulted in abandonment of the plan in the 1960s. A few turf areas remain to remind us of the original plan.

DESIGN

Ernst H. Herminghaus created the landscape design for the Capitol courtyards to reflect the variety of color and pattern of the building's interior. Herminghaus' actual drawings for each of the four courtyards were analyzed by Big Muddy Workshop and Campbell's Nurseries and plant selections were updated only slightly to account for current climate and improved species.

Although similar in overall plant layout and border design, the flower beds in each courtyard are distinctly different in color palette, with a series of taller shrubs and small trees against the building, and low-growing hedges along the interior sidewalks. Each courtyard will have its own unique mix of colorful plants.

A NATIONAL HISTORIC LANDMARK

The Herminghaus-designed Capitol landscape, which includes the courtyards and the exterior landscape, is a part of the Nebraska State Capitol's official designation as a National Historic Landmark. Of the buildings nationally designated as National Historic Landmarks, it is rare to find both the building and its landscape so designated.

COMPONENTS OF THE CAPITOL COURTYARD GARDENS PROJECT

- ❖ New, more efficient sub-soil irrigation systems
- ❖ Bed preparation
- ❖ Soil amendments
- ❖ Equipment rental
- ❖ Annuals
- ❖ Bulbs
- ❖ Shrubs
- ❖ Trees
- ❖ Endowment





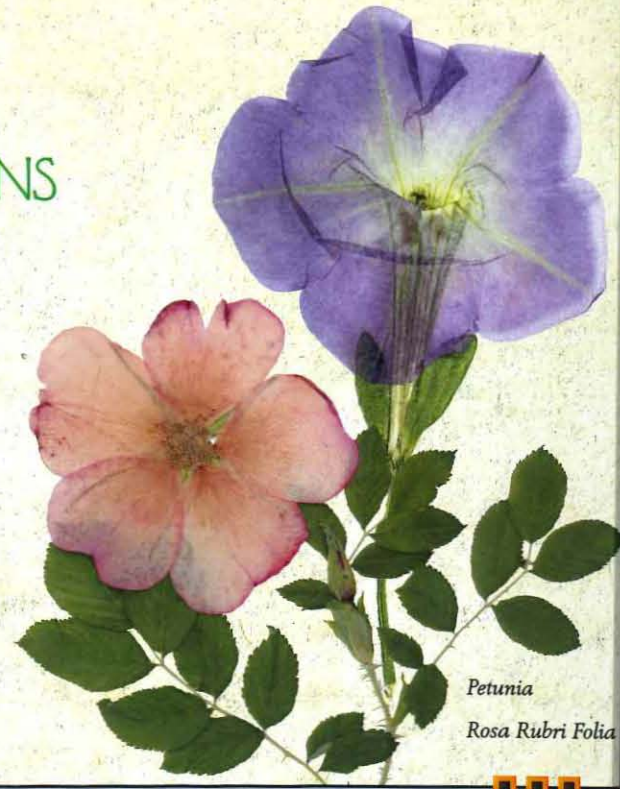
FINISHING THE CAPITOL COURTYARD GARDENS

CONTRIBUTIONS:

Contributions to this campaign can be sent to:

Celebrating Nebraska Statehood
201 N. 8th Street, Suite 215
Lincoln, NE 68508

Make checks payable to "Celebrating Nebraska Statehood" with "Capitol Courtyards" in the memo. Celebrating Nebraska Statehood, Inc., is a non-profit, 501(c)(3), Tax ID 47-4867912, established in 2016 by First Lady Susanne Shore.



Petunia
Rosa Rubri Folia

"Finishing the Capitol courtyard gardens will complete the vision for the Capitol. The inner courtyards will be an explosion of color, and providing a setting for quiet contemplation, weddings and other social events, as well a capstone for tours of the Capitol. Architects Goodhue and Herminghaus would be pleased, as would those Depression-era legislators who had the foresight and dedication to fund such an outstanding Capitol."

-DiAnna Schimek, Former Nebraska State Senator

CAMPAIGN LEADERSHIP

Campaign Committee: Former State Senators DiAnna Schimek (Chair), Tom Carlson, Jim Jensen, Joel Johnson, Vickie McDonald, Scott Moore, John Nelson, Sandy Scofield and Bob Wickersham.

Project Advisors: John Royster, Big Muddy Workshop of Omaha; Dick Campbell, Campbell's Nurseries of Lincoln; and Robert Ripley, Capitol Administrator.

FOR MORE INFORMATION

The Nebraska Association of Former State Legislators: Vickie McDonald, Executive Director, 402-429-9002 or vkimac@gmail.com

Campaign Organizer: Susan Larson Rodenburg, SLR Communications, 402-440-3227 or Susan@SLRCommunications.com

Website: NE150.org/Courtyards

