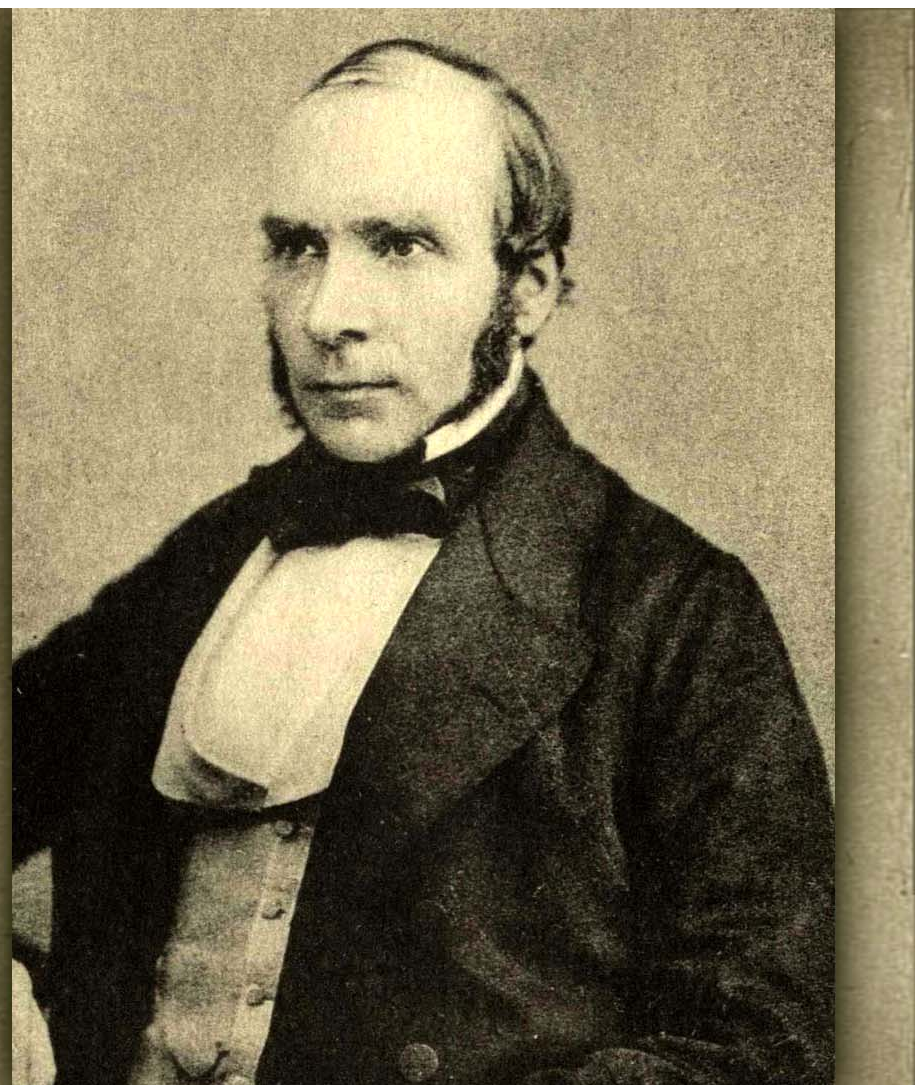
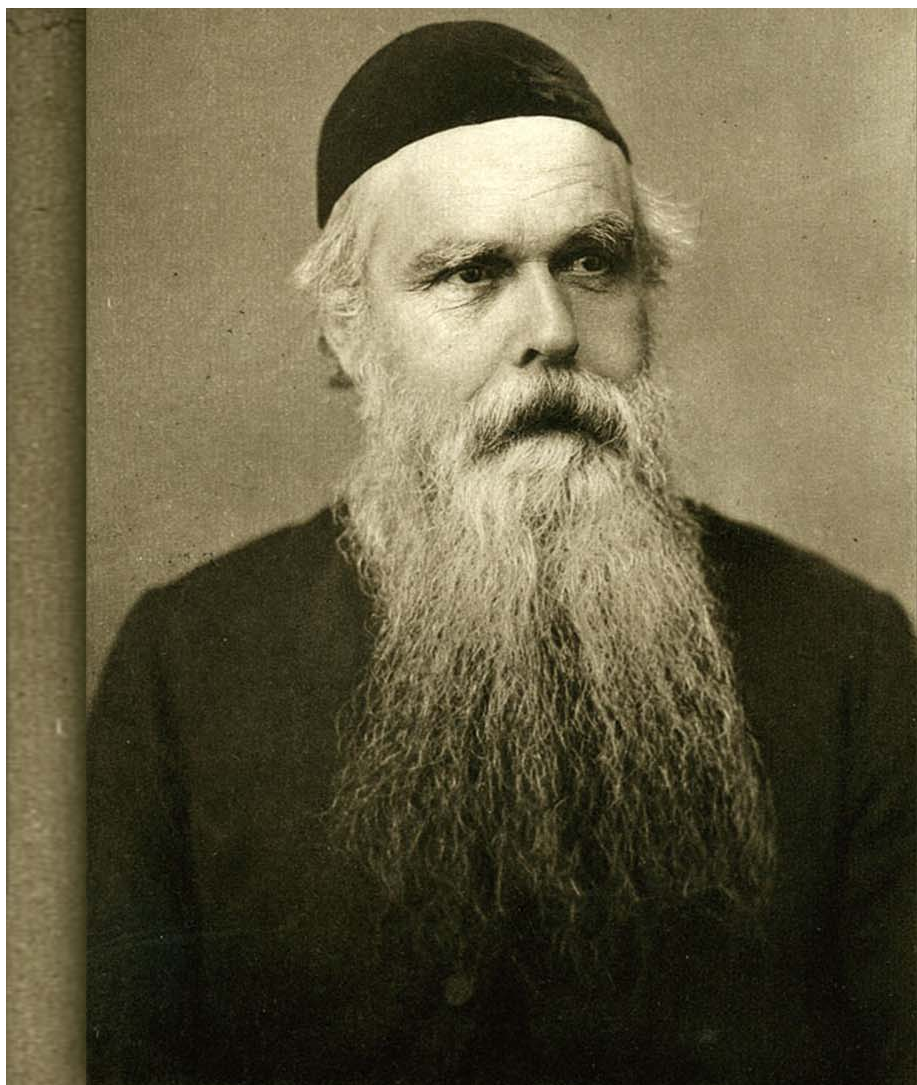




“He was a local.  
That was his great strength.”

— *Steven Johnson, The Ghost Map*







PLACE  
matters

*More Than Ever*



## Special thanks to our partners...

Lincoln-Lancaster County  
Health Department

City of Lincoln  
Urban Development Dept.

Lincoln Police Department

Nebraska Extension

Lincoln Public Schools

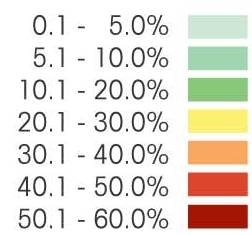
Lancaster County Medical Society

Nebraska Department of  
Health and Human Services

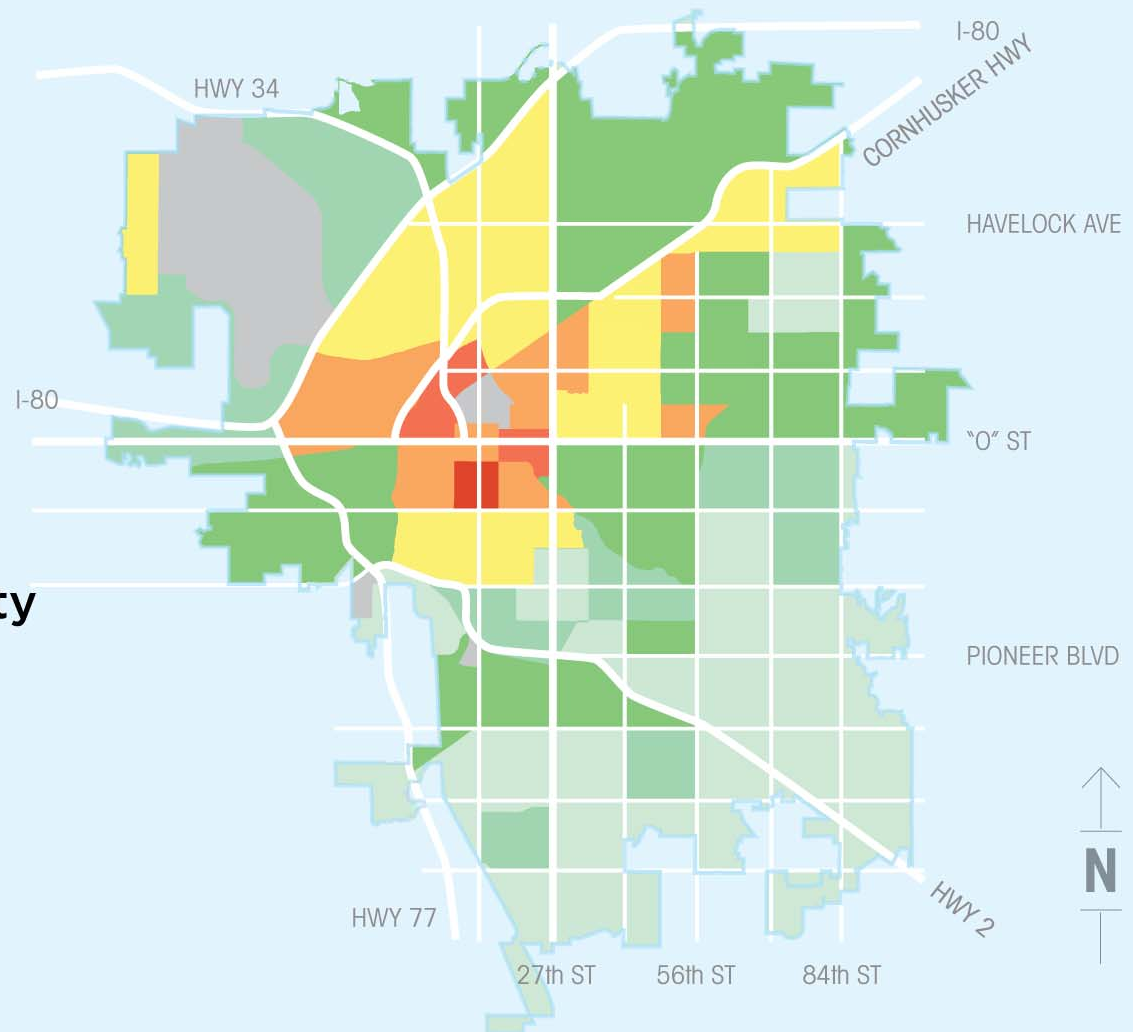
Partnership for a  
Healthy Lincoln



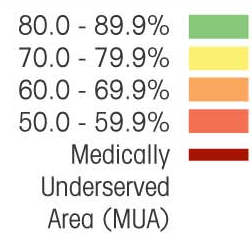
## 2011 - 2015 People Living in Poverty



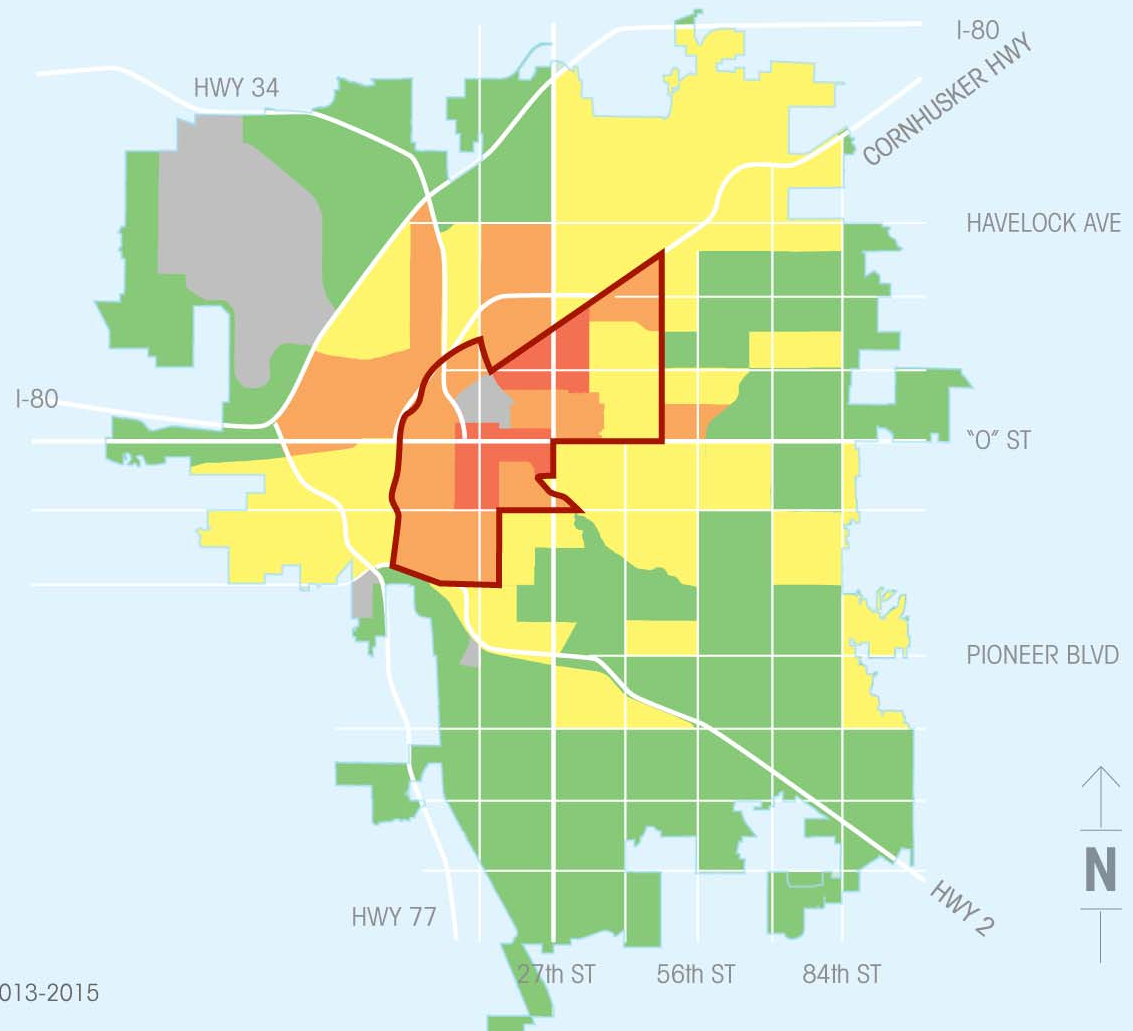
SOURCE: U.S. CENSUS BUREAU



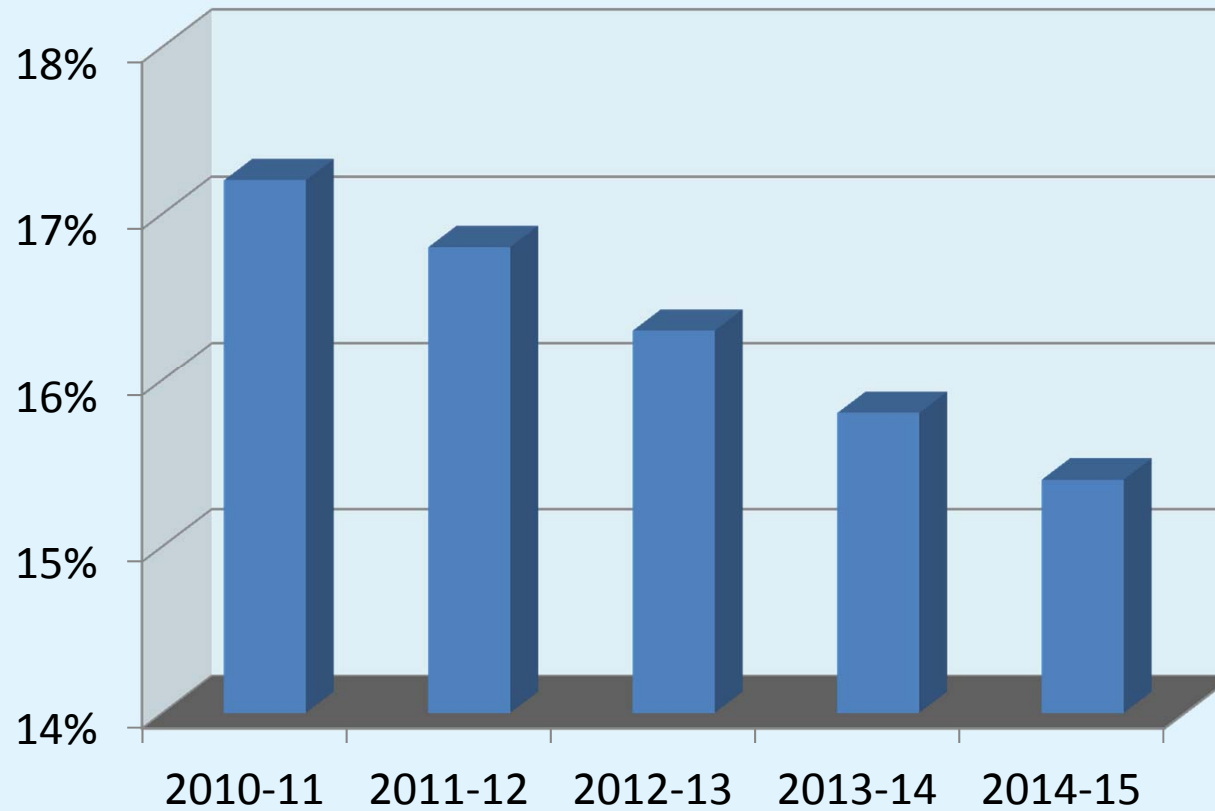
## First Trimester Prenatal Care



SOURCE: LINCOLN-LANCASTER COUNTY HEALTH DEPT., 2013-2015



## Childhood Obesity in Lincoln, NE



SOURCE: LINCOLN PUBLIC SCHOOLS, K-8



### Childhood Obesity

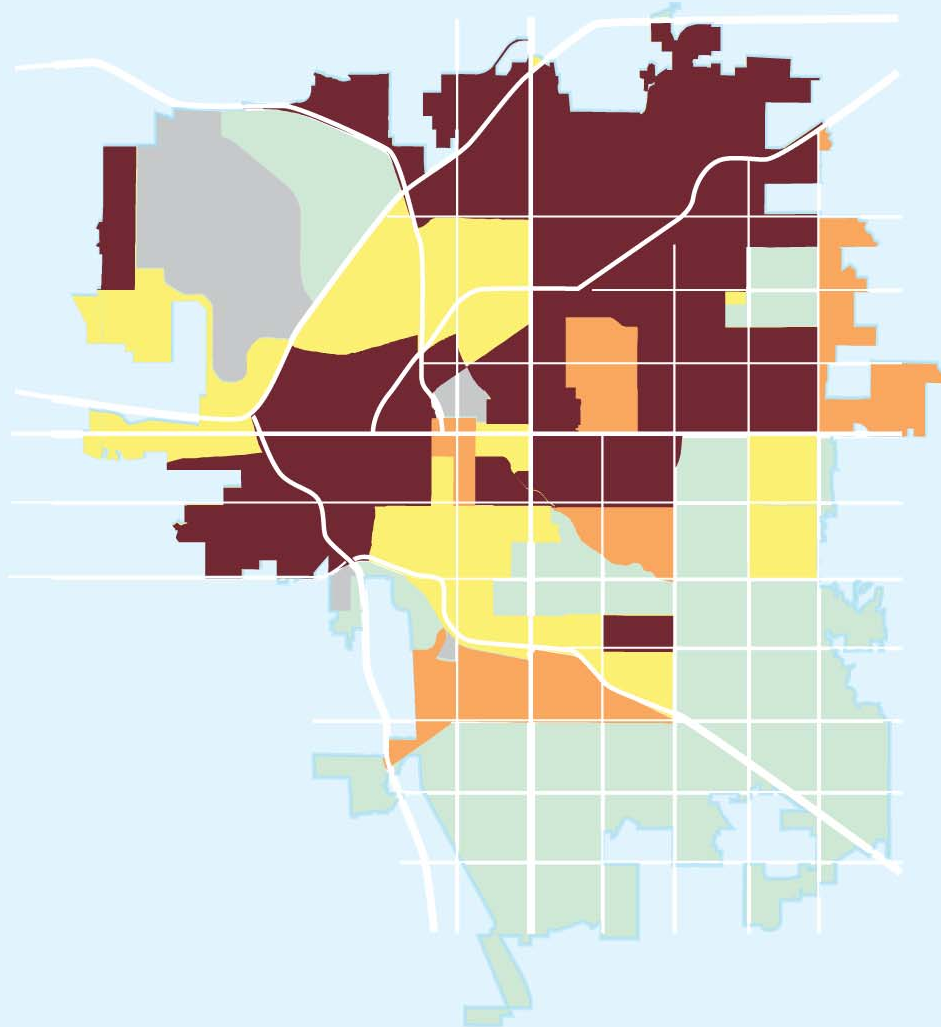
 Greater than 12.2%

### Poverty Rate

 Greater than 10%

### Obesity + Poverty

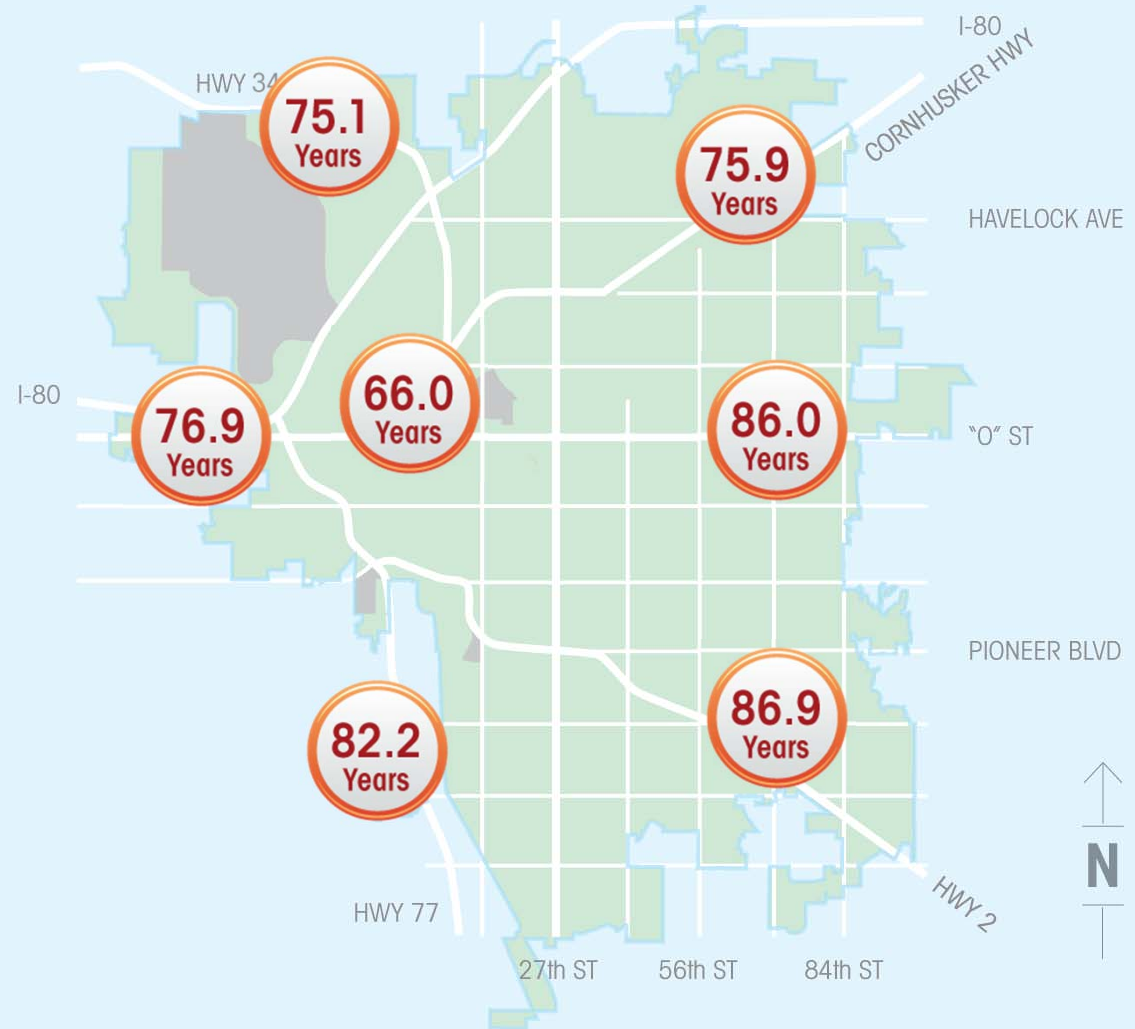
 Overlap



## Life Expectancy 2011 - 2015

**80.1** Life Expectancy  
in Lancaster County

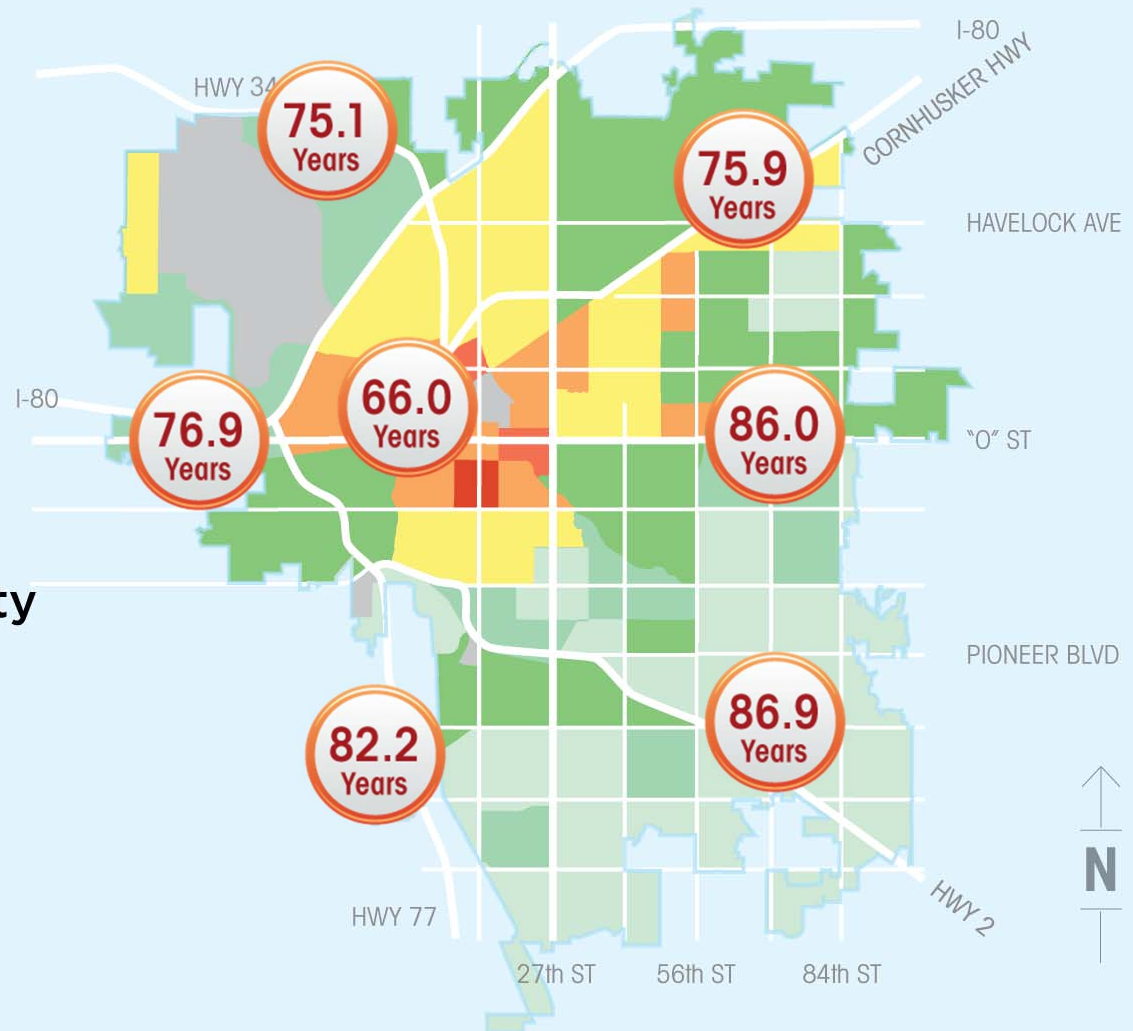
SOURCE: LINCOLN LANCASTER HEALTH DEPARTMENT



## 2011 - 2015 People Living in Poverty



SOURCE: U.S. CENSUS BUREAU



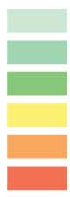


## Healthy Food Access

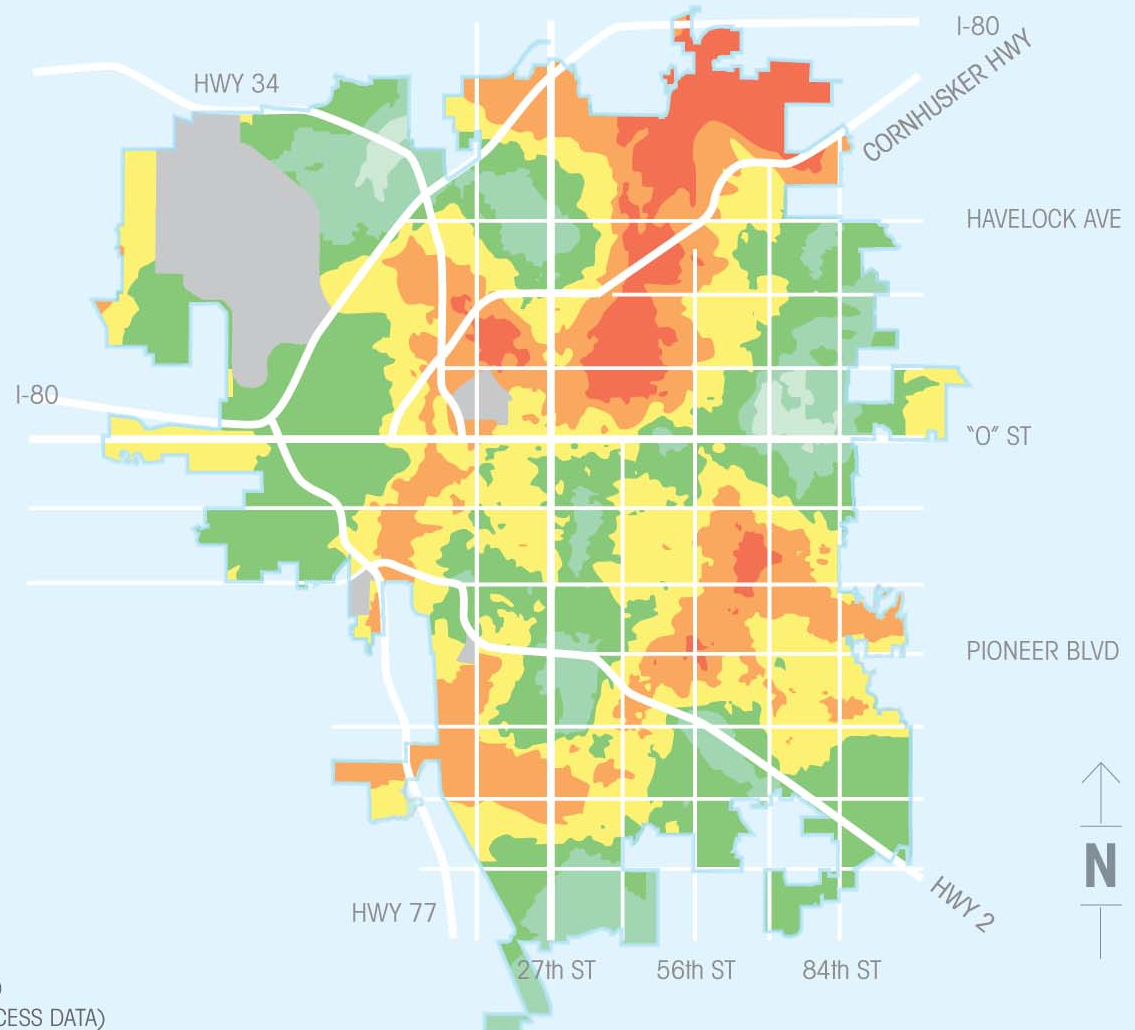
Highest Access

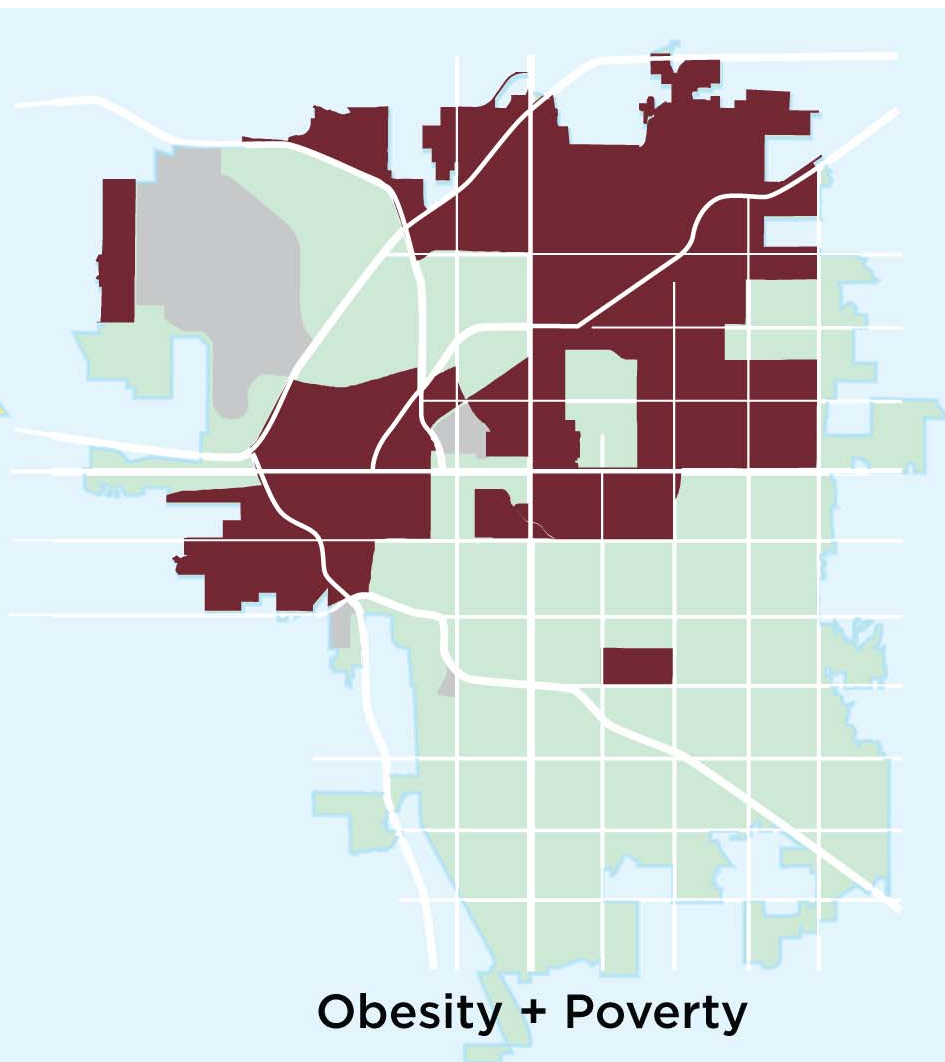
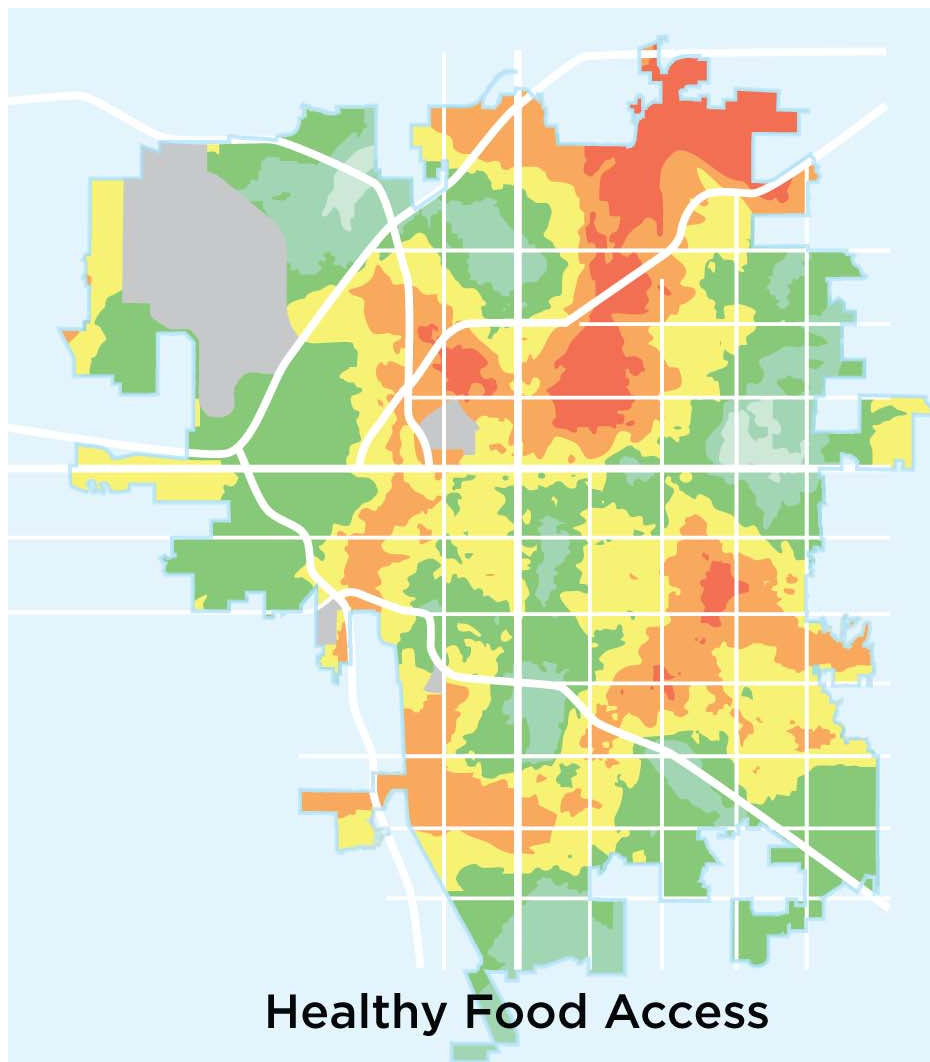


Lowest Access



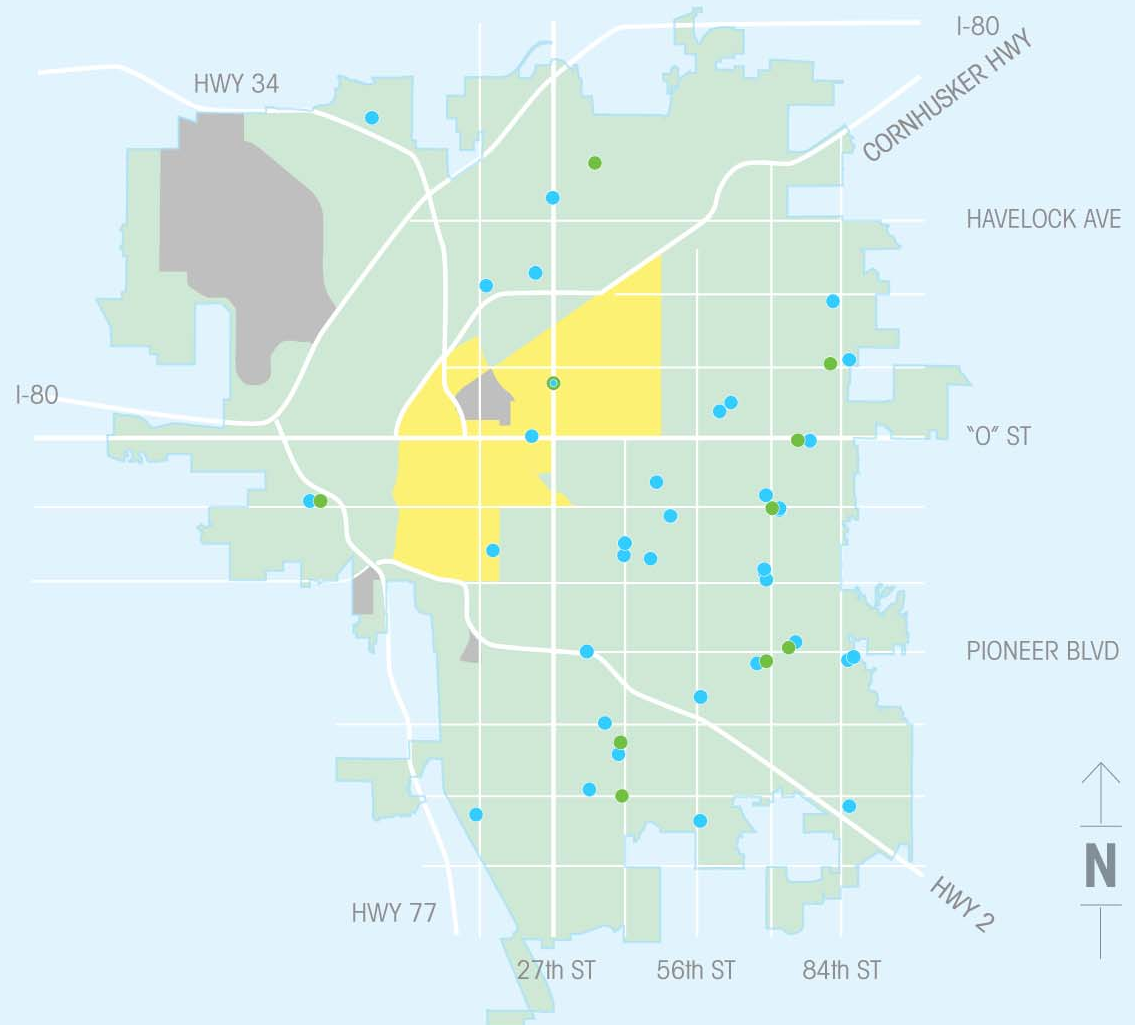
SOURCE: NEBRASKA EXTENSION (NEBNEMS-S DATA) AND  
THE U.S. CENSUS BUREAU ACS 2011-2015 (VEHICLE ACCESS DATA)





## Primary Medical Care

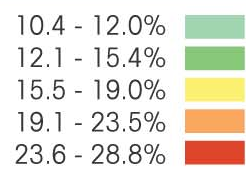
- Primary Care or Internal Medicine
- Pediatrics
- Family Practice with Pediatrics
- Medically Underserved Area (MUA)



SOURCE: LANCASTER COUNTY MEDICAL SOCIETY, 2017

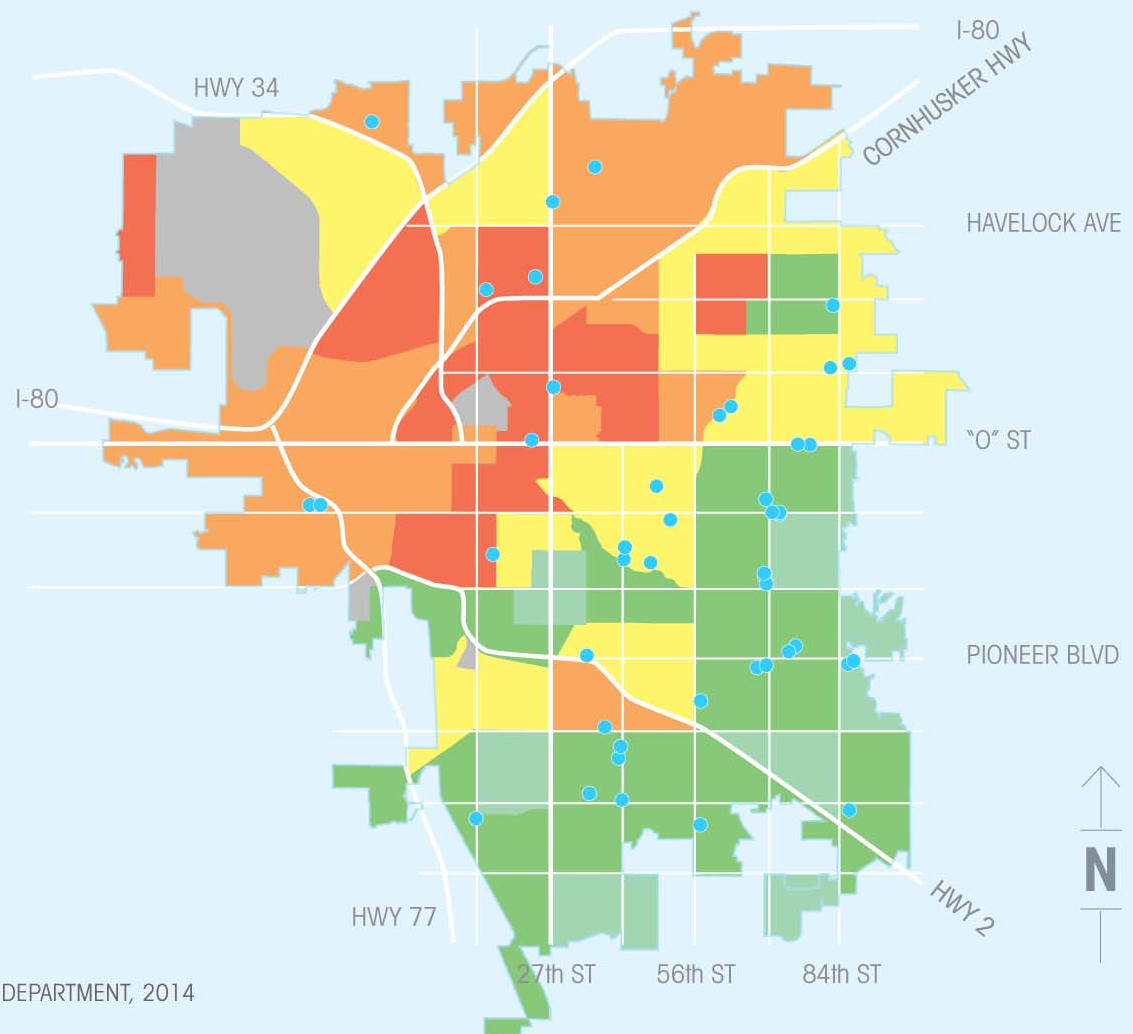


## People 18+ Who Smoke Tobacco



Primary Medical  
Care Facilities 

SOURCE: BRFFSS, LINCOLN-LANCASTER COUNTY HEALTH DEPARTMENT, 2014







DO  
something





PLACE  
matters

*More Than Ever*