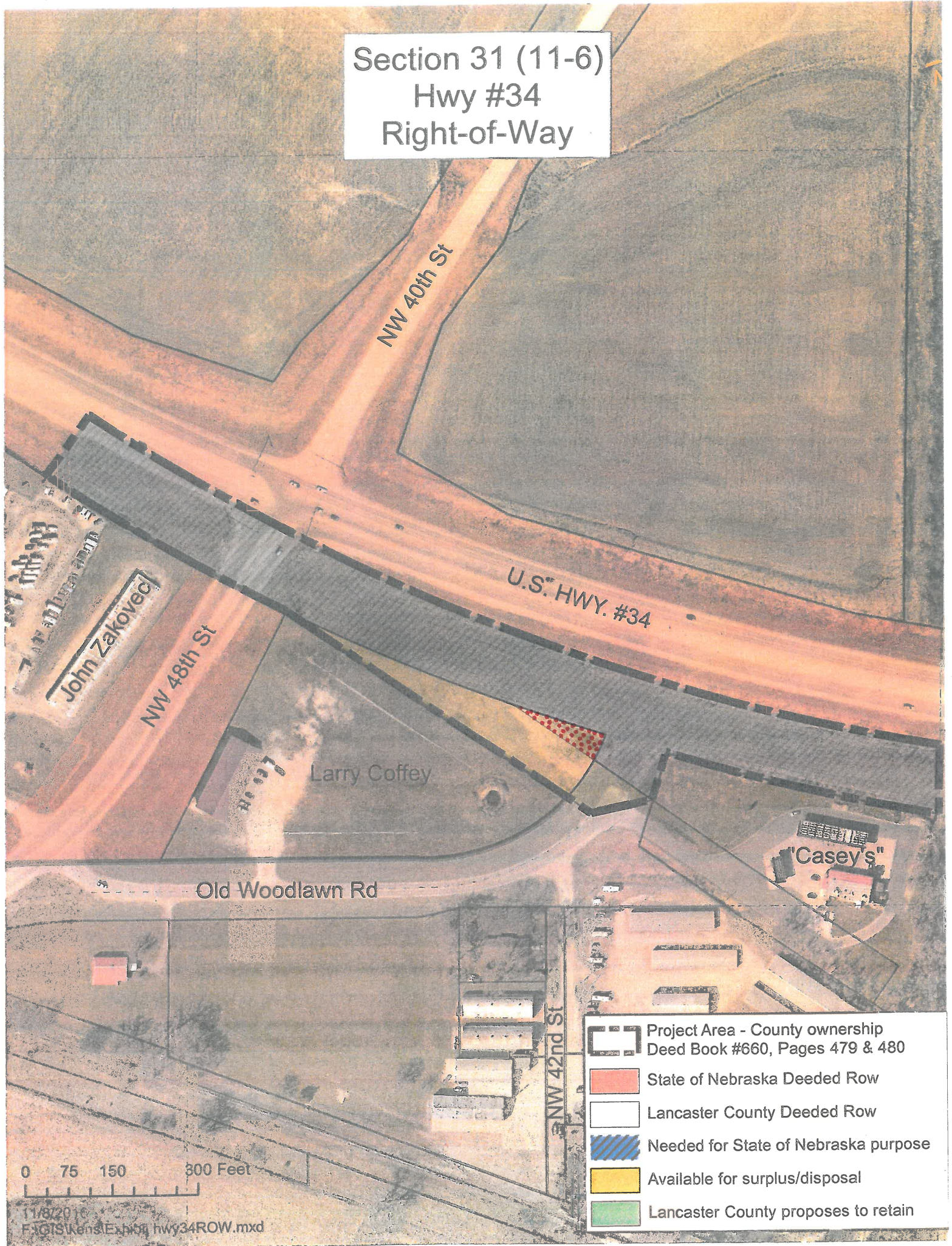








Section 31 (11-6)
 Hwy #34
 Right-of-Way



0 75 150 300 Feet

11/8/2010
 FIGIS\Kensl\hwy34ROW.mxd

-  Project Area - County ownership
Deed Book #660, Pages 479 & 480
-  State of Nebraska Deeded Row
-  Lancaster County Deeded Row
-  Needed for State of Nebraska purpose
-  Available for surplus/disposal
-  Lancaster County proposes to retain



CURVE DATA

① R = 3759.72' D = 1°31'26" Δ = 24°42'56" L = 1621.82' T = 823.72' C = 1609.28' Ch Brg = N 68°15'22" W	② R = 3889.72' D = 1°28'23" Δ = 07°07'14" L = 483.40' T = 242.01' C = 483.09' Ch Brg = S 59°30'30" E
③ R = 3879.72' D = 1°28'36" Δ = 08°55'55" L = 604.82' T = 303.03' C = 604.21' Ch Brg = S 68°23'17" E	④ R = 333.07' D = 17°12'08" Δ = 08°50'00" L = 51.35' T = 25.73' C = 51.35' Ch Brg = S 24°48'50" W
⑤ R = 3879.72' D = 1°28'36" Δ = 07°15'57" L = 492.00' T = 246.33' C = 491.67' Ch Brg = S 77°15'05" E	⑥ R = 333.07' D = 17°12'08" Δ = 22°33'20" L = 131.12' T = 66.42' C = 130.27' Ch Brg = N 31°40'28" E
⑦ R = 333.07' D = 17°12'08" Δ = 13°43'17" L = 79.76' T = 40.07' C = 79.57' Ch Brg = S 66°55'29" W	

L=1621.82' M 1619.2'D

L=604.82' M
TRACT 1
4.925 Ac

S 55°56'52" E
595.43' M
TRACT 2
0.793 Ac
645.96' M
645.4' D

L=79.76' M
TRACT 3
0.158 Ac
S 78°28'06" W
114.28' M
111.2' D

N 17°20'26" E
87.25' M
87.4' D

N 17°20'26" E
83.54' M

N 55°56'52" W
186.61' M

LOT 29

N 89°55'52" W
23.90' M & D

81°19'22" W
81°19' D

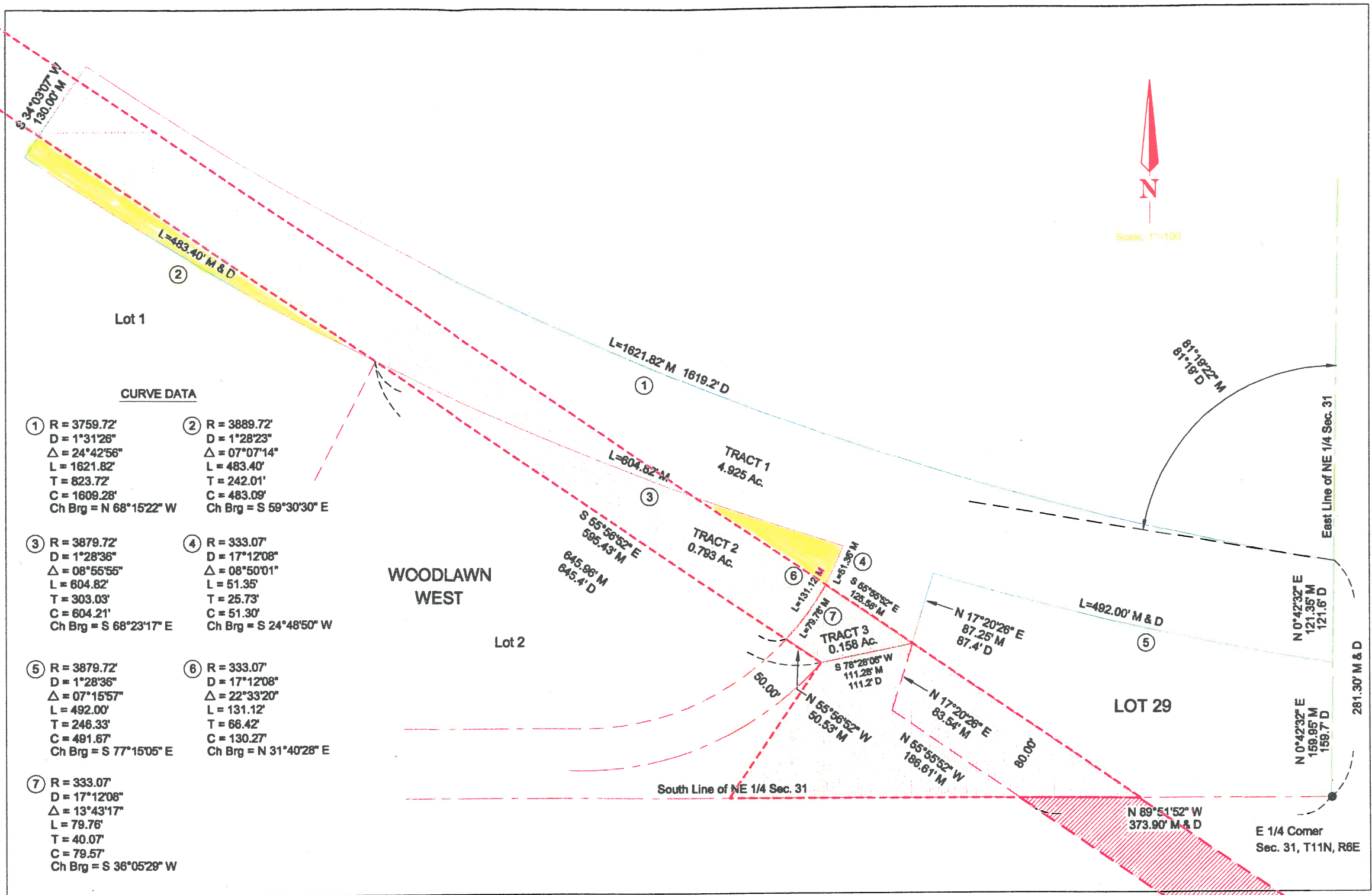
East Line of NE 1/4 Sec. 81

N 0°42'32" E
121.35' M
121.6' D

N 0°42'32" E
159.95' M
165.7' D

281.30' M & D

E 1/4 Corner
Sec. 31, T11N, R36E



S 34°03'07" W
130.00' M

L=483.40' M & D
②

L=1621.82' M 1619.2' D
①

L=604.82' M
③

L=91.36' M
④

L=131.12' M
⑥

L=79.78' M
⑦

L=492.00' M & D
⑤

CURVE DATA

- | | |
|--|--|
| ① R = 3759.72'
D = 1°31'28"
Δ = 24°42'56"
L = 1621.82'
T = 823.72'
C = 1609.28'
Ch Brg = N 68°15'22" W | ② R = 3889.72'
D = 1°28'23"
Δ = 07°07'14"
L = 483.40'
T = 242.01'
C = 483.09'
Ch Brg = S 59°30'30" E |
| ③ R = 3879.72'
D = 1°28'36"
Δ = 08°55'55"
L = 604.82'
T = 303.03'
C = 604.21'
Ch Brg = S 68°23'17" E | ④ R = 333.07'
D = 17°12'08"
Δ = 08°50'01"
L = 51.35'
T = 25.73'
C = 51.30'
Ch Brg = S 24°48'50" W |
| ⑤ R = 3879.72'
D = 1°28'36"
Δ = 07°15'57"
L = 492.00'
T = 246.33'
C = 491.67'
Ch Brg = S 77°15'05" E | ⑥ R = 333.07'
D = 17°12'08"
Δ = 22°33'20"
L = 131.12'
T = 66.42'
C = 130.27'
Ch Brg = N 31°40'28" E |
| ⑦ R = 333.07'
D = 17°12'08"
Δ = 13°43'17"
L = 79.78'
T = 40.07'
C = 79.57'
Ch Brg = S 36°05'28" W | |



Scale: 1"=100'

Lot 1

WOODLAWN WEST

Lot 2

TRACT 1
4.925 Ac.

TRACT 2
0.783 Ac.

TRACT 3
0.158 Ac.

LOT 29

South Line of NE 1/4 Sec. 31

East Line of NE 1/4 Sec. 31

E 1/4 Corner
Sec. 31, T11N, R6E

281.30' M & D

N 0°42'32" E
121.35' M
121.6' D

N 0°42'32" E
159.95' M
159.7' D

N 89°51'52" W
373.90' M & D

N 17°20'26" E
87.25' M
87.4' D

N 17°20'26" E
83.54' M

N 55°55'52" W
188.61' M

S 65°56'52" E
125.58' M

S 76°28'00" W
111.28' M
111.2' D

S 55°56'52" E
595.43' M
645.96' M
645.4' D

81°19'22" M
81°19' D

50.00'

80.00'