

City of Lincoln/Lancaster County (Lincoln Purchasing) Supplier Response

Bid Information		Contact Information		Ship to Information	
Bid Creator	Sharon Mulder Asst Purchasing Agent	Address	Purchasing 440 S. 8th St. Lincoln, NE 68508	Address	Lancaster County Engineering 444 Cherrycreek Road, Bldg B Lincoln, NE 68528
Email	smulder@lincoln.ne.gov	Contact	Sharon Mulder Asst Purchasing Agent	Contact	
Phone	(402) 441-7428	Department		Department	
Fax	(402) 441-6513	Building	Suite 200	Building	
Bid Number	17-107 Addendum 1	Floor/Room		Floor/Room	
Title	Rental of Four (4) 2-Wheel Drive Tractors	Telephone	(402) 441-7428	Telephone	(402) 441-6321
Bid Type	Bid	Fax	(402) 441-6513	Fax	
Issue Date	3/22/2017 11:00 AM (CT)	Email	smulder@lincoln.ne.gov	Email	
Close Date	4/5/2017 12:00:00 PM (CT)				purchasing@lincoln.ne.gov

Supplier Information

Company	Platte Valley Equipment Co.
Address	PO Box 276 Wahoo, NE 68066
Contact	ROSS MILLER
Department	
Building	
Floor/Room	
Telephone	(402) 443-3123
Fax	(402) 443-3490
Email	rmiller@pvequip.com
Submitted	4/5/2017 09:35:18 AM (CT)
Total	\$26,000.00

By submitting your response, you certify that you are authorized to represent and bind your company.

Signature Michael Fuchs

Email mike@pvequip.com

Supplier Notes

Bid Notes

Bid Activities

Bid Messages

Bid Attributes

Please review the following and respond where necessary

#	Name	Note	Response
1	Instructions to Bidders	I acknowledge reading and understanding the Instructions to Bidders.	Yes
2	Specifications	I acknowledge reading and understanding the specifications.	Yes
3	Bid Documents	I acknowledge and accept that it is my responsibility as a Bidder to promptly notify the Purchasing Department Staff prior to the close of the bid of any ambiguity, inconsistency or error which I may discover upon examination of the bid documents including, but not limited to the Specifications.	Yes
4	Sample Contract	I acknowledge reading and understanding the sample contract.	Yes
5	Delivery	State number of delivery days ARO. FOB to the City/County at the location specified with all transportation charges paid.	14
6	U.S. Citizenship Attestation	<p>Is your company legally considered an Individual or Sole Proprietor: YES or NO</p> <p>As a Vendor who is legally considered an Individual or a Sole Proprietor I hereby understand and agree to comply with the requirements of the United States Citizenship Attestation Form, available at: http://www.sos.ne.gov/business/notary/citizenforminfo.html</p> <p>All awarded Vendors who are legally considered an Individual or a Sole Proprietor must complete the form and submit it with contract documents at time of execution.</p> <p>If a Vendor indicates on such attestation form that he or she is a qualified alien, the Vendor agrees to provide the US Citizenship and Immigration Services documentation required to verify the Vendor's lawful presence in the United States using the Systematic Alien Verification for Entitlements (SAVE) Program.</p> <p>Vendor further understands and agrees that lawful presence in the United States is required and the Vendor may be disqualified or the Contract terminated if such lawful presence cannot be verified as required by Neb. Rev. Stat. 4-108.</p>	yes
7	Contact	Name of person submitting this bid:	Michael Fuchs
8	Renewal is an Option	Contract Extension Renewal is an option.	Yes
9	Special Provision Term Contract Provisions	I acknowledge reading and understanding the Special Provision Term Contract Provisions.	Yes
10	Term Clause of Contract	<p>I acknowledge that the term of the contract is for a one (1) year term with the option for three (3) additional one (1) year renewals from the date of the executed contract. (a) Are your bid prices firm for the first one (1) year contract period. YES or NO _____</p> <p>(b) Are your bid prices subject to escalation/de-escalation YES or NO _____</p> <p>(c) If (b), state period for which prices will remain firm: through _____</p>	(a) yes (b) yes (c) after the end of the first contract year.

- | | | |
|-----------------------------------|---|-----|
| 11 Tax Exempt Certification Forms | Materials being purchased in this bid are tax exempt and unit prices are reflected as such. A Purchasing Agent Appointment form and a Exempt Sales Certificate form shall be issued with contract documents. (Note: State Tax Law does not provide for sales tax exemption for proprietary functions for government, thereby excluding the purchases of pipes to be installed in water lines and purchase of water meters.) | Yes |
| 12 Electronic Signature | Please check here for your electronic signature. | Yes |
| 13 Agreement to Addendum No. 1 | Respondent hereby certifies that the change set forth in this addendum has been incorporated in their proposal and is part of their bid. Reason: See Bid Attachments section for Addendum information. | Yes |

Line Items

#	Qty	UOM	Description	Response
1	4	EA	Rental of Tractors for County Engineering	\$6,500.00

Manufacturer: JD, Case, New Holland or Equivalent

Item Notes: For mowing with Rotary Mowers attached.

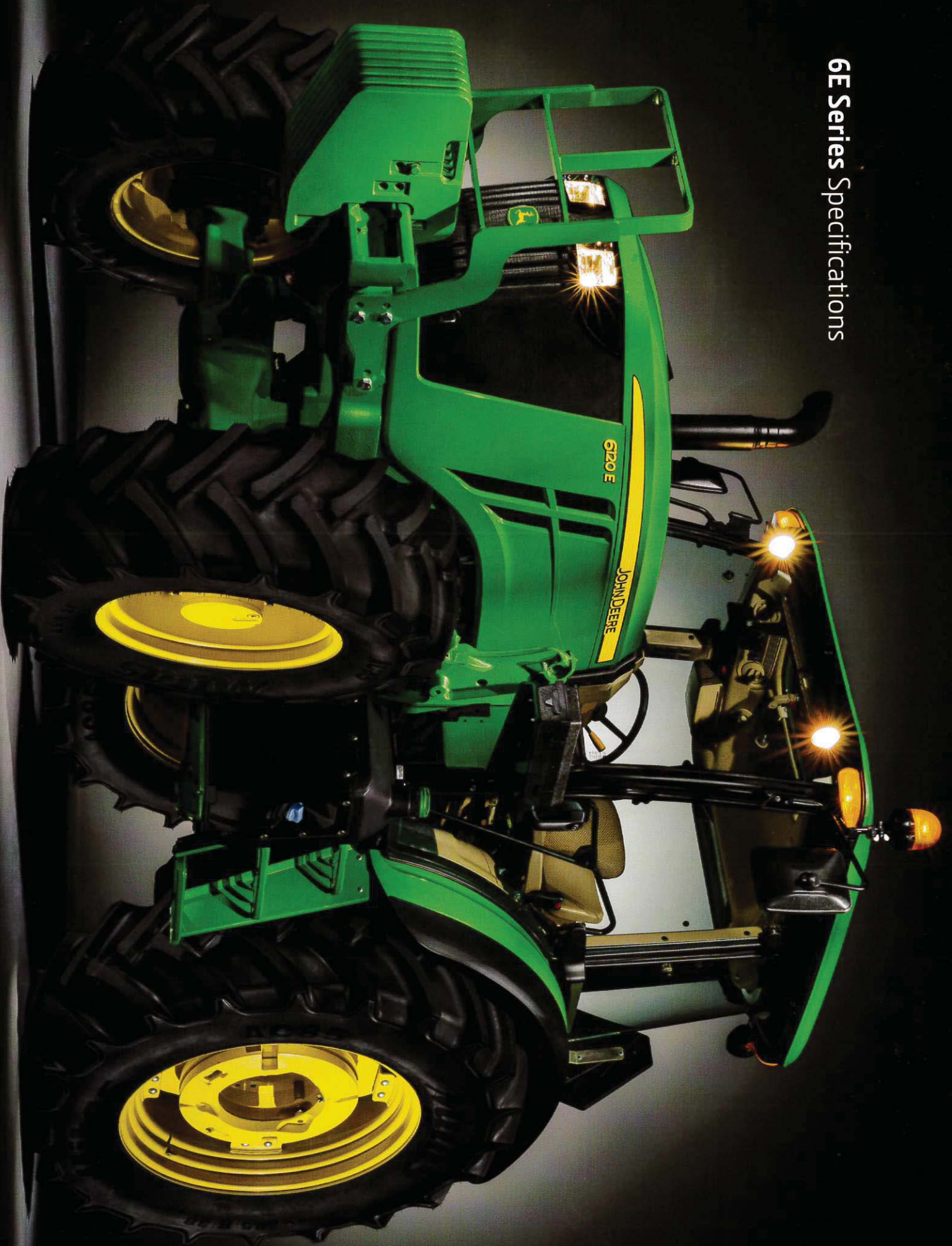
Supplier Notes:

Item Attributes: Please review the following and respond where necessary

#	Name	Note	Response
1	Manufacturer and Model Number	Please provide Manufacturer and Model Number bidding.	John Deere 6135E MFWD cab tractor with air conditioning, am/fm radio and 135 engine H.P. (115 pto H.P.)

Response Total: \$26,000.00

6E Series Specifications



	6105E	6120E	6135E
POWER * estimated			
Rated PTO power (hp SAE) at engine speed (2100 rpm)	89 hp (66 kW)	102 hp (76 kW)	115 hp (86 kW)
Rated engine power (hp ISO) at 2200 engine rpm (97/68EC)*	105 hp (77 kW)	120 hp (88 kW)	135 hp (99 kW)
Engine Peak Torque (Nm) (xx% @ 1600 rpm)	432 N-m (318 lb.-ft)	494 N-m (364 lb.-ft)	539 N-m (397 lb.-ft)
Constant Power Range (rpm)	1800 - 2200 rpm		1900 - 2200 rpm
ENGINE			
Manufacturer (US EPA Interim Tier4/EU Stage IIIB)	PowerTech™ PWL (B20 Diesel Compatible)	PowerTech™ PWL (B20 Diesel Compatible)	PowerTech™ PWS (B20 Diesel Compatible)
Rated Speed		2,200 rpm	
Type		Diesel, in-line, 4-cylinder, wet-sleeve cylinder liners with 4 valves-in-head	
Aspiration (US EPA Interim Tier4/EU Stage IIIB)		Wastegate turbocharger with air-to-air aftercooling and cooled exhaust gas recirculation	
Filter, engine air		Dual stage with aspiration	
Displacement		275 cu. in. (4.5L)	
Bore and stroke		4.17 in. (106 mm) x 5.00 in. (127 mm)	
Compression ratio		16.8:1	
Lubrication		Full-pressure, full-flow filtration with bypass	
Filter, oil		Replaceable cartridge style oil filter	
TRANSMISSION			
12F/12R Top Shaft Synchronized (TSS) Transmission w/ PowerReverser (30K)		Standard	
24F/12R Top Shaft Synchronized (TSS) Transmission w/PowerReverser and Hi-Lo (40 k)		Option	
AXLES			
Rear Axle Final Drive		Inboard planetary	
Rear Axle - Flange		Standard	
2WD - tread range 60.4 to 80.4 in. (1533 to 2043 mm)		Optional	
M2WD - tread range 59.7 to 79.4 in. (1516 to 2016 mm)		Standard	N/A
DIFFERENTIAL LOCK			
Front Axle - 2WD		Limited Slip	
Front Axle - M2WD		Standard	
Rear Axle - Full-Locking mechanical		Open center, gear driven	
HYDRAULIC SYSTEM (type)			
Selective control valves		2 Mechanical SCVs Standard; 3 Mechanical SCVs Optional	
Main pump, axial piston (displacement)		36.5 cc	
Maximum pressure		2,828 psi (19,500 kPa)	
Rated flow (at 90% Advertised Efficiency)		20 US gpm/75.7 lpm	
Available flow at a single SCV		20 US gpm/75.7 lpm	
3-POINT HITCH (rear) - Electrohydraulic Sensing			
Category 2 (5500 lbs (2500 kg) Standard Lift @ 610mm behind hitchpoint)		Standard	
Category 2 (7300 lbs (3318 kg) Heavy Duty Lift @ 610mm behind hitchpoint)		Optional	
Draft Sensing		Optional	
DRAWBAR			
Cat 2 1000 kg (2205 lb.) - 1250 kg (2756 lb.) Maximum Vertical Load dependent on drawbar position		Standard	
Cat 2 1200 kg (2645 lb.) - 1900 kg (4189 lb.) Maximum Vertical Load dependent on drawbar position		Optional	
PTO (power take off)		Independent	
1-3/8 in., 540/1000 reversible shaft		Standard	
PTO Speed @ Engine RPM		540 PTO @ 2085 Engine rpm or 1000 PTO @ 2067 Engine rpm	
WHEELBASE			
2WD		96.7 in. (2456 mm)	
M2WD		96.5 in. (2450 mm)	
Max Ballast Level		14250 lb (6464 kg)	
Max Payload Capacity		17636 lb (8000 kg)	

* 97/68/EC power refers to average [50% MOE] net brake power measured and corrected for ambient conditions according to the EC emissions directive. It is equivalent to internal Deere Standard R6S10080, and SAE Standards J1349, J1995.

Match up to any implement ... and go

With the powerful, reversible PTO, you'll move from chore to chore with ease.

If you've got a day filled with just about every type of application there is, the 6E has the answer.

Bring it on!

Whether you're baling, chipping wood, digging postholes, running a grinder/mixer or pulling a flex-wing mower, you'll have the power to get it done.

The electrohydraulic engagement system allows you to power the PTO up or down with one simple move. Because the PTO is fully independent, you can handle tough, start-and-stop conditions. It keeps the power flowing whether you're clutching, stopping or changing gears. And switching from 540 to 1000 rpm takes less than 30 seconds, making it easy to handle any implement you've got ... even those requiring higher power within a constant power range.



Take on a wide range of PTO-powered jobs with the 540/1000 RPM independent PTO system.



The 6E comes standard with an intuitive hydraulic stack featuring two color-coded and numbered SCVs to make your job easier. An optional third deluxe SCV with flow control is also available.



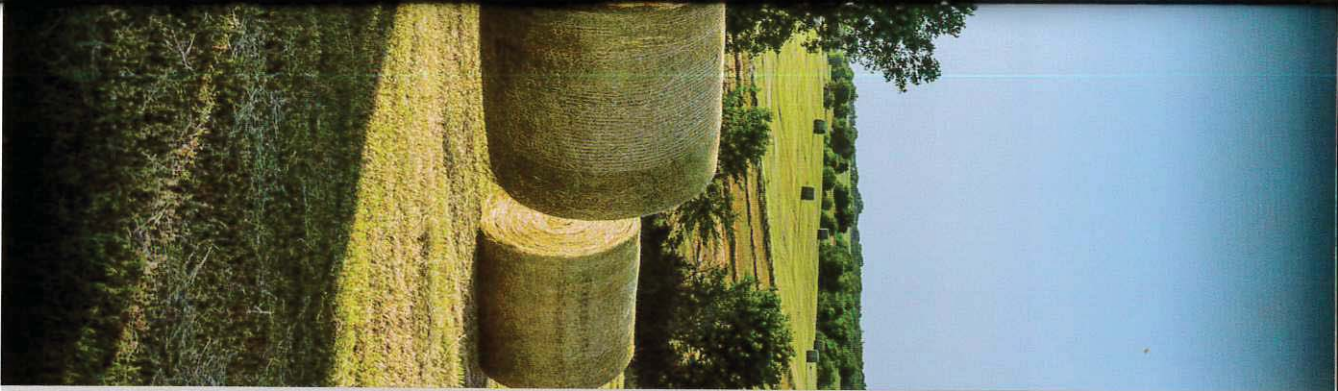
The conveniently located console makes operating the hitch intuitive. Raise and lower the hitch with the control lever and set the stop knob for preset depth.



- 1 The Category II drawbar can handle big implements like flex-wing rotary cutters.
- 2 With optional sway bars featuring sway control, hook up and adjustment are easy.



Telescoping draft arms make implement hook up faster and easier.



Everything right where it should be

A well-designed operating environment puts control within reach and makes your days on the job easier.

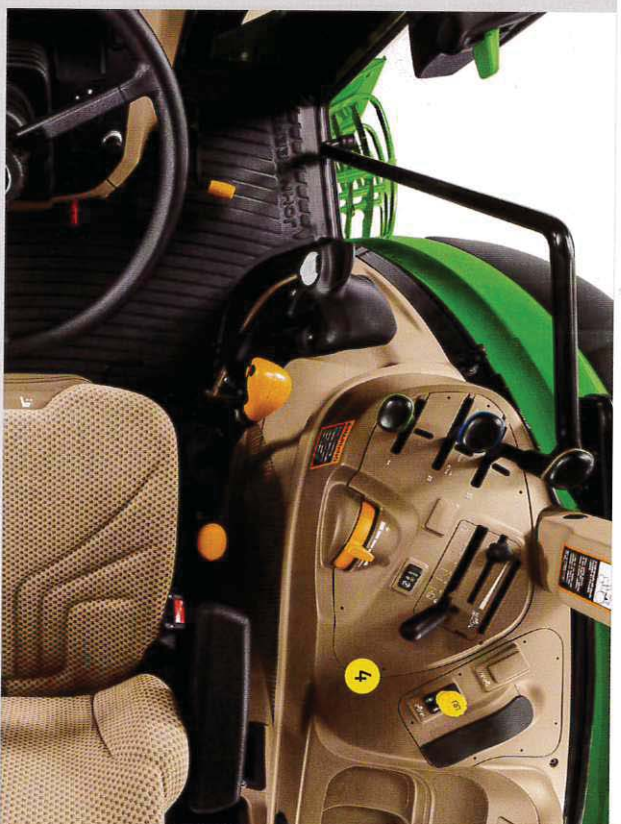
Economical doesn't have to mean uncomfortable. And with the 6E, it doesn't. All the critical controls are right where you expect them ... within easy reach of your right hand. This makes operating the 6E intuitive, simple and productive, even for those who are new to running a utility tractor.

To up the comfort a couple of notches, we've added 15 degrees of seat swivel to the 6E. If you do loader work, look back frequently, handle transport chores or pull an implement, you'll twist and turn less to see the work around you. All that glass means better visibility, too.

Of course, when Mother Nature chooses to make the day more challenging, you'll be right at home in the climate controlled cab – incredibly comfortable for such an economical utility tractor.

Even if you live in a moderate climate and choose an open station 6E, you'll still benefit from a well-designed cockpit with intuitive controls and a seat made to keep you comfortable.





- 1 Stay comfortable all day long:** One of the most comfortable cabs you can get on a value -spec utility tractor.
- 2 15 degrees of seat swivel** will help you feel less fatigued if you back frequently, spend all day pulling an implement or handle transport chores.
- 3 Instructional seat.** Perfect for training new operators, the optional instruction seat offers comfortable, easy-to-stow seating for trainees.
- 4 Simple, intuitive controls** make the 6E a highly productive utility tractor for any operator.

1	Rental of Tractors for County Engineering			Manufacturer and Model Number
---	---	--	--	-------------------------------

Unit Price Extended

Supplier	QTY	UOM	Unit Price	Extended	Supplier Notes / Alternate Description	Manufacturer	Manuf #	Please provide Manufacturer and Model Number bidding.
[ALT1] LANDMARK IMPLEMENT 1	1	EA	\$10,987.31	\$10,987.31	This is a new 2015 6140D (115 pto hp)	John Deere	6140D	This cost is on a per-year basis. The yearly costs are paid up front. It includes 1 year comprehensive warranty, followed by a powertrain warranty for the remainder of the lease period. Regular maintenance will still be required. The purchase option at the end of the lease is \$37,363.50.
[ALT2] LANDMARK IMPLEMENT 1	1	EA	\$11,521.60	\$11,521.60	This is a new 2016 6135E (114 pto hp)	John Deere	6135E	This cost is on a per-year basis. The yearly costs are paid up front. It includes 1 year comprehensive warranty, followed by a powertrain warranty for the remainder of the lease period. Regular maintenance will still be required. The purchase option at the end of the lease is \$39,358.82.

Sharon R. Mulder

To: Bill Fleisher
Subject: RE: Tractor Rental Results

From: Bill Fleisher
Sent: Wednesday, April 05, 2017 12:46 PM
To: Sharon R. Mulder
Subject: RE: Tractor Rental Results

Looks like Platte Valley is the lowest.

I think we should go with them.

From: Sharon R. Mulder
Sent: Wednesday, April 05, 2017 12:09 PM
To: Bill Fleisher <bfleisher@lancaster.ne.gov>
Subject: Tractor Rental Results

Bill,
Please review and let me know how you wish for me to proceed.
Thanks,

Sharon Mulder
Asst. Purchasing Agent
City/County Purchasing
440 S. 8th St., Ste. 200
Lincoln, NE 68508
402-441-7428
smulder@lincoln.ne.gov