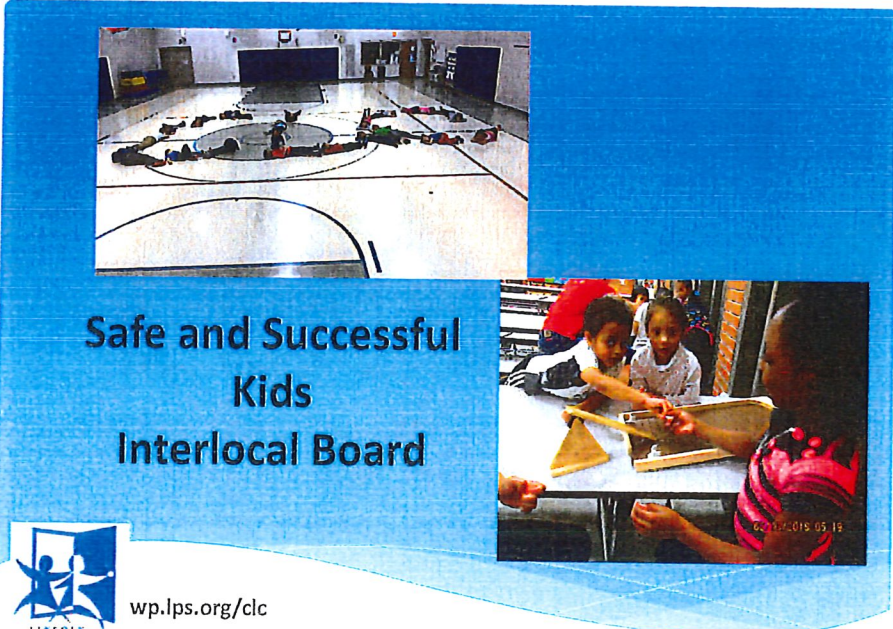



Report Regarding Community Learning Center Initiatives

Nola Derby-Bennett, Lincoln Public Schools CLC Director, provided an informative presentation regarding Community Learning Center Initiative for fiscal year 2017-18 (copy of PowerPoint attached to official minutes on record). Ms. Derby-Bennett highlighted full service goals of academics, youth development, family support, health and social services, and community development. There are 26 CLC sites with 10 lead agencies leading those sites, which are operated by Memorandum of Understandings renewed each year. Student demographics were reviewed showing annual growth, free and reduced lunch percentages, and it was noted that the before and after school program clubs are free, with scholarships available to the core program.

Discussion topics among Board members and Ms. Derby-Bennet regarded bilingual translation of information to parents; use of academic performance success data and success of the CLC students; improvement surveys from teachers, students, and parents; number of CLC clubs available; mental health services access and community response awareness for prevention outreach; positive effects on students and their families, neighborhoods, and the community as a whole; and funding sources. It was also suggested that Board members participate in a CLC tour during end of semester "showcases", or at any other time convenient to them.



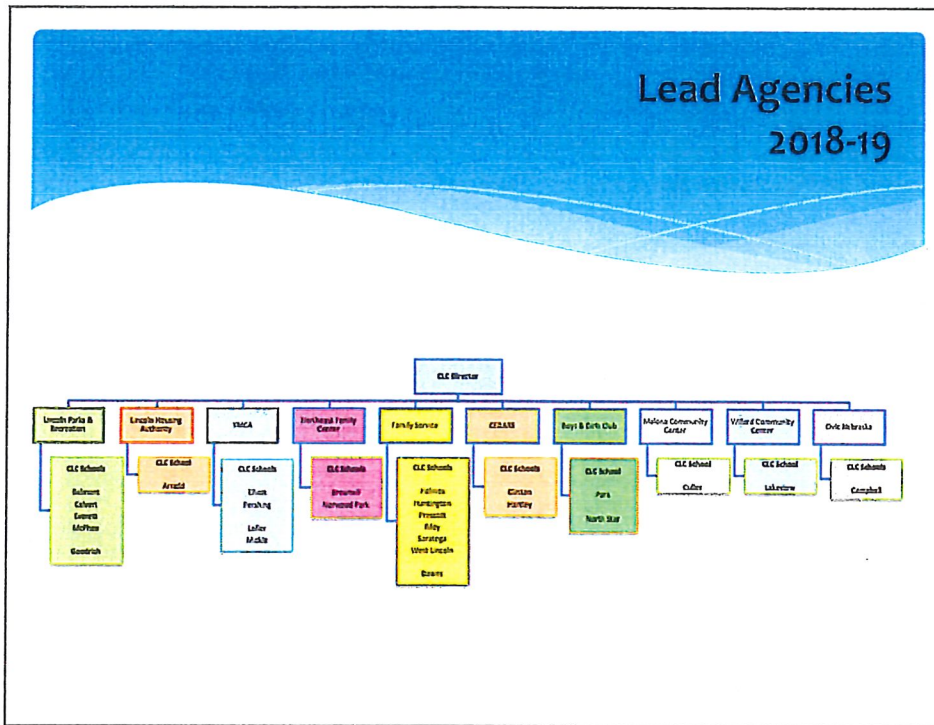
**Safe and Successful
Kids
Interlocal Board**



wp.lps.org/clc

Full Service Community School Goals

- * Academics
- * Youth Development
- * Family Support
- * Health and Social Services
- * Community Development



Memorandum of Understanding

- * Leadership Infrastructure
- * Responsiveness to Need
- * Management and Staffing
- * Sustainability
- * Communication
- * Professional Development
- * Evaluation

MEMORANDUM OF UNDERSTANDING
between
LINCOLN PUBLIC SCHOOLS / LINCOLN COMMUNITY LEARNING CENTERS
and
CLC PARTNER

The Memorandum of Understanding (MOU) describes and confirms an agreement between Lincoln Public Schools / Lincoln Community Learning Centers (CLC) and _____, _____, The purpose of this Agreement is to clarify and outline roles and responsibilities related to CLC Conditions for Success in partnership and service implementation at _____ CLC school. The MOU is considered an addendum to the Consultant / Senior Provider Agreement that is effective July 1, 2018 through June 30, 2019.

[LPS Director/ CLC Leadership Responsibility]

Leadership Infrastructure

- Employ Lincoln Community Learning Centers Director to support partnership development and business oversight.
- Director provides staff support to CLC Executive Leadership Council, Advisors and CLC Subadvisors and site teams.
- Integrate CLC Director into LPS management structure (Director Council, Federal Programs, Title I principal meetings) and city meetings as appropriate.
- Superintendent and his designee serve on CLC Executive Leadership Council. Superintendent serves as a voting member of Executive Leadership Council.

Responsiveness to Need

- Make sites access resources needed to accomplish site goals.
- Connects sites to community partners that can be utilized in reaching site goals.

Management and Staffing

CLC Embedded in School

Culler Middle School Culler Middle School is a professional learning community with a tradition of service and a core of collaboration and a commitment to student learning.

Home About **Activities** Staff Calendar Technology LMS Parent Center

Cougar Den (CLC)

Welcome!

My name is Zein Saleh and I am the new Culler CLC Director! Culler is fortunate enough to be partnered with the Malone Community Center, the Malone Center helps support our students in a variety of different ways to set them up for success with their families, to have a positive impact in our community, and to set them up for their future accomplishments!

Our Cougar Den is a free and extended learning opportunity that gives students the opportunity to participate in academic, artistic, recreational, and cultural enrichment clubs.

The Cougar Den is available Monday-Friday and operates during the during the hours of 3:00 PM and 5:30 PM on regular days while we operate 1:40 PM – 4:30 PM on PLC days.

Our plan is to start the Spring Semester with program changes. Please read the following as they can affect you and your children!

Contact
 5201 N. Ave. St.
 (502) 436-1210
 mhulst@ms.org
[Contact Form](#)

Hours, Snapshot, School Improvement Plan...

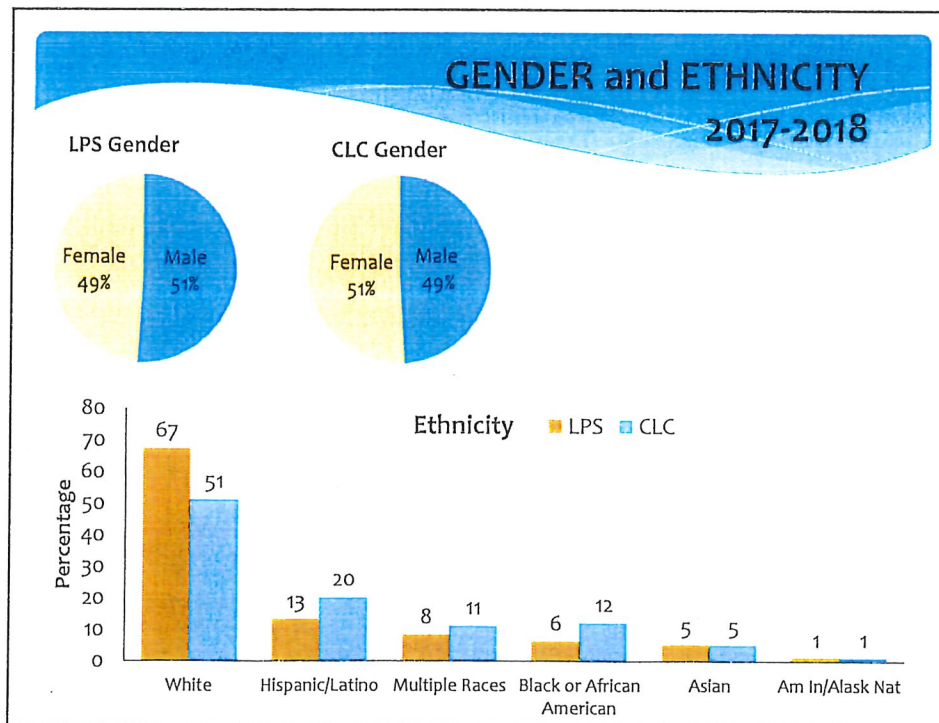
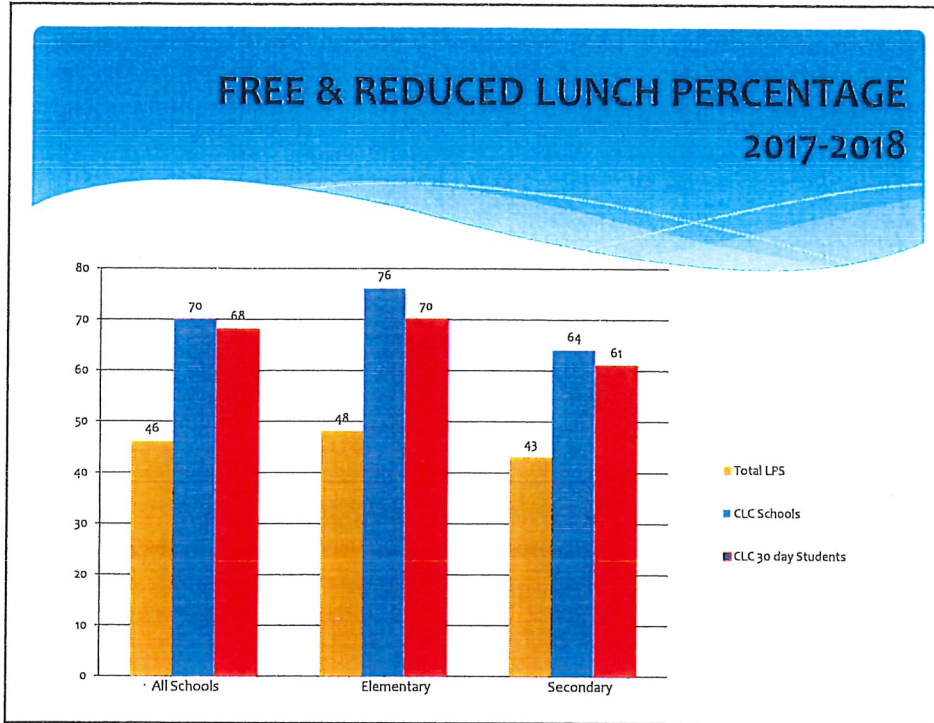
Essentials
[Parent/View / Student/View](#)
[Grades, attendance, notifications and more](#)
[Handbook](#)
[Important Information Booklet, Common Practices and School Handbook](#)
[Course Guide](#)

CLC STUDENT DEMOGRAPHICS

STUDENTS SERVED in ELO (26 CLC Sites) ELO= Expanded Learning Opportunities	2014-15	2015-16	2016-17	2017-18
Number Students Served in ELO	6422	6121	6750	6917
Number Students Served 30 +Days	2614	3063	3299	3066
Number Students served in Summer	858	1322	1223	1112

Demographics of Students attending ELO 30+ Days

Students participating in free or reduced lunch	65%	66%	66%	68%
Students of color	48%	47%	48%	48%
Students in Special Education program	17%	18%	19%	17%
Students who are ELL	9%	9%	9%	14%



NeSA DATA CLC STUDENTS SUCCEED ACADEMICALLY

2016-17: NeSA – Math

	3 rd Grade		5 th Grade		8 th Grade	
	% Meet or Exceed Standards	Students Tested	% Meet or Exceed Standards	Students Tested	% Meet or Exceed Standards	Students Tested
All Buildings	78	3,179	79	3,013	67	2,928
CLC Buildings	68	1,141	70	1,115	56	1,436
CLC Students	75	381	75	325	67	313

NeSA DATA CLC STUDENTS SUCCEED ACADEMICALLY

2016-17: NeSA – Science

	5 th Grade		8 th Grade	
	% Meet or Exceed Standards	Students Tested	% Meet or Exceed Standards	Students Tested
All Buildings	71	3,010	69	2,927
CLC Buildings	59	1,113	60	1,435
CLC Students	60	324	70	316

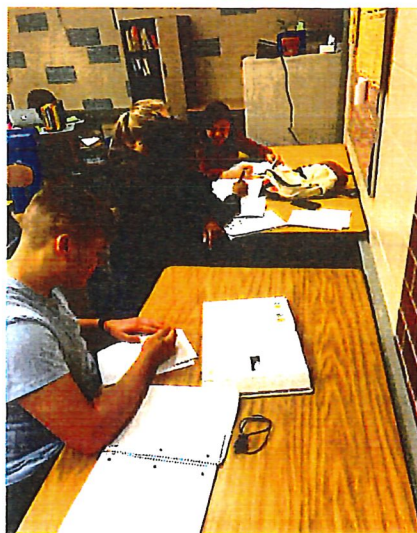
CLC USE OF DATA

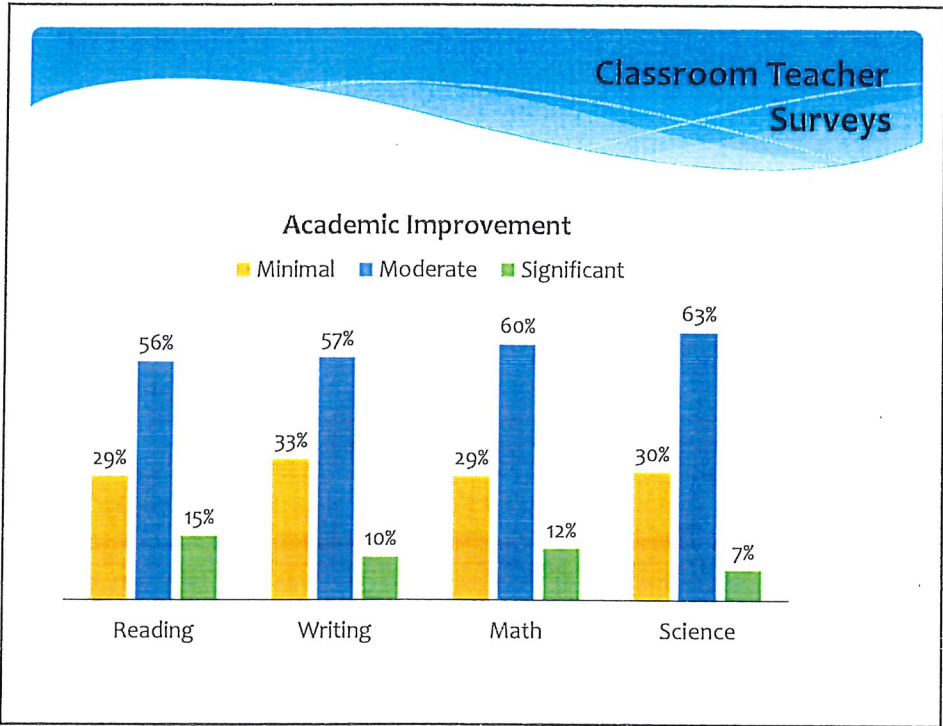
- Continuous Improvement Process
- Raise awareness of promising practices
- Support sites' improvement efforts
- Enhance opportunities for sustainability
- Combine data with stories to communicate work



SUCCESSFUL STUDENTS

- Achieve academically
- Attend school regularly
- Are healthy physically, socially and emotionally
- Have hope for the future

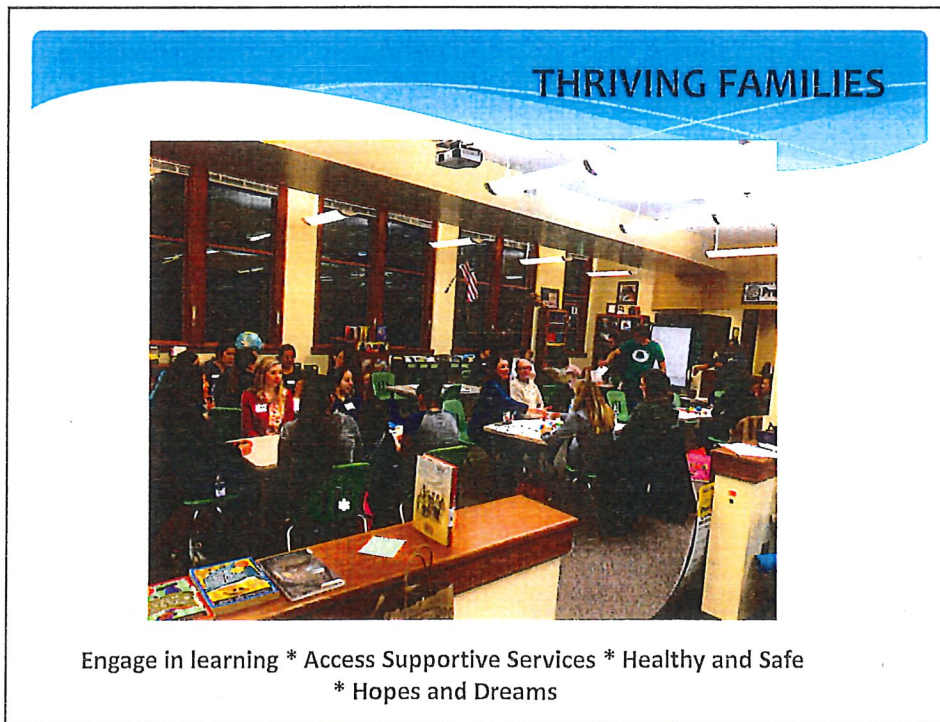
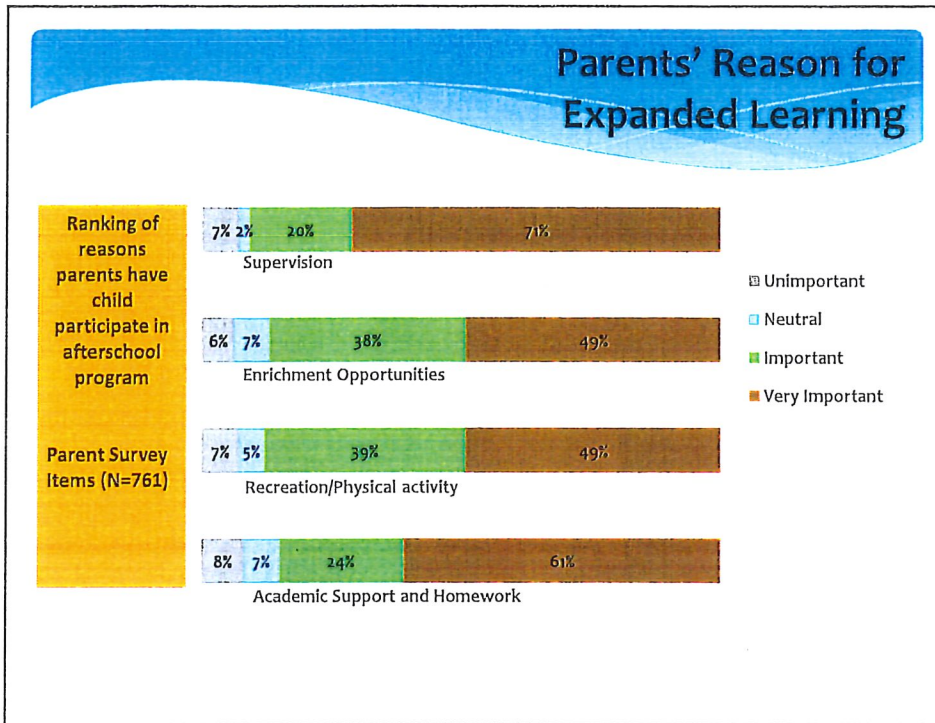




CLC Clubs

- We Cook
- CSI Club (Partnership with UNL Biology Lab)
- Joven Noble / Latina Leaders
- Broadcasting Club
- Scouts
- Smart Girls
- Yoga Club
- Makerspace
- Movin' & Groovin'
- Pottery
- Kindness Club
- Makers Builders
- Science Club
- Roads, Rails & Racecars
- Archery
- Spark Fitness
- Robotics
- Brain Games

The figure consists of three photographs. The top-left photo shows two female students smiling and holding a plate of food. The top-right photo shows a group of students in a pool with various toys and equipment. The bottom photo shows a large group of students posing together for a group photo.



Access to Supportive Services

Mental Health Services

- Family Service provided behavioral health services in 9 CLC sites
- 3,315 direct service hours to children and families
- 274 unduplicated clients
- 96% of clients discharged from service maintained improved classroom behavior
- 81% of parents reported their child was better at dealing with daily life stressors
- 88% of clients discharged from service met their stated Service Plan goals

Community Response (5 CLC School Sites)


Focus on prevention outreach to reduce child abuse and neglect

- Served 56 families
- Impacted 105 children
- 83% of families reported awareness and growth in three protective factors (sense of belonging, concrete supports, and parent education)
- No referrals to CPS were made
- 85% of parents reported feeling supported and connected to school

STRONG NEIGHBORHOODS

Neighborhood/Community Impact

- ✧ 4 CLCs offered Community Cafés
- ✧ 14 Cafés were hosted by 8 trained parent facilitators
- ✧ Tax VITA sites at three locations
- ✧ 62% of CLC sites have an active School Neighborhood Advisory Committee (SNAC)
- ✧ 3 sites participated in National Night Out
- ✧ 2 sites participated in Streets Alive



CLC Conditions for Success

FULL SERVICE COMMUNITY SCHOOL PARTNERSHIPS

Conditions for Success	EMERGING	MATURING	EXCELLING
Leadership Infrastructure	CLC school board members have been identified.	CLC school board members are actively participating in the work and operation of a community school.	CLC performance is being measured and reported.
Responsiveness to	CLC school board members are actively participating in the work and operation of a community school.	CLC school board members are actively participating in the work and operation of a community school.	CLC school board members are actively participating in the work and operation of a community school.

FULL SERVICE COMMUNITY SCHOOLS for STUDENT SUCCESS (Services, Supports, and Opportunities)

Conditions for Success	EMERGING	MATURING	EXCELLING
Quality Programming	Expanded Learning Opportunities (ELOs) are being implemented.	Expanded Learning Opportunities (ELOs) are being implemented.	Expanded Learning Opportunities (ELOs) are being implemented.
Integration of Services	Mental Health, Early Childhood, Adult Learning.	Mental Health, Early Childhood, Adult Learning.	Mental Health, Early Childhood, Adult Learning.

