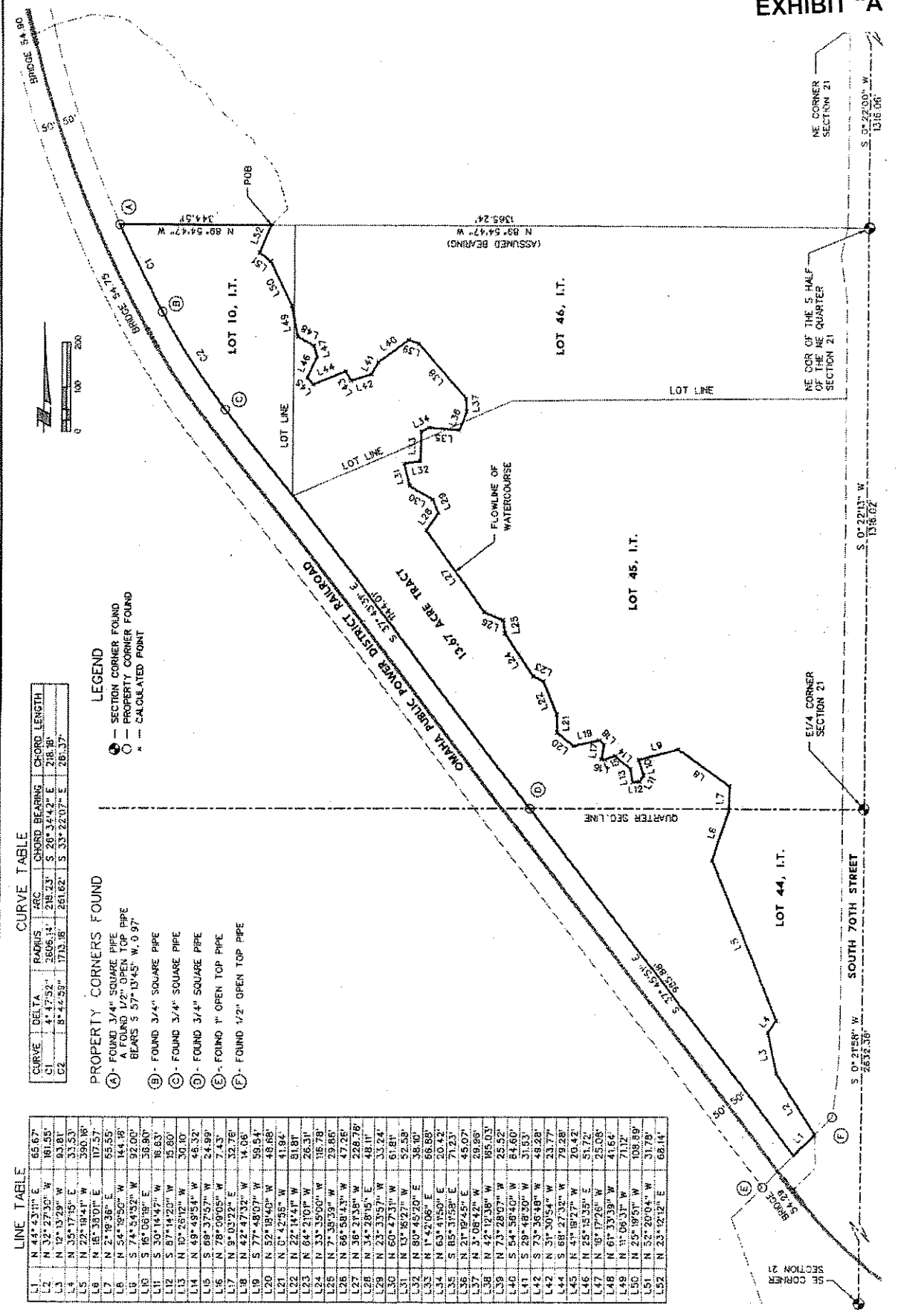


DATE	
DESCRIPTION	
NO.	

A 13.67 AC. TRACT IN LOTS 10, 44, 45 & 46, 1T, IN THE  
S2NE4 & NE4SE4 SEC. 21-19N-R7E, LANCASTER CO., NE

INCLIN CORP  
223 J. St., Box 80350  
Lincoln, NE 68501  
(402) 479-2200  
WWW.INCLIN.COM

# EXHIBIT "A"



LINE TABLE

L1	N 44° 43' 00" E	65.67'
L2	N 32° 27' 30" W	161.58'
L3	N 10° 13' 30" W	93.81'
L4	N 35° 17' 30" E	31.53'
L5	N 22° 19' 41" W	390.18'
L6	N 16° 38' 07" E	117.57'
L7	N 24° 18' 36" E	55.55'
L8	N 54° 35' 52" W	144.91'
L9	S 74° 53' 53" W	92.00'
L10	S 16° 05' 38" E	35.90'
L11	S 30° 14' 42" W	56.63'
L12	S 87° 14' 02" W	15.80'
L13	N 10° 25' 20" W	36.10'
L14	N 48° 43' 54" W	45.32'
L15	S 69° 31' 52" W	24.99'
L16	N 78° 09' 05" W	7.43'
L17	S 0° 03' 22" E	32.78'
L18	N 42° 47' 52" W	4.06'
L19	S 77° 48' 07" W	59.54'
L20	N 52° 19' 45" W	48.66'
L21	N 0° 42' 55" W	41.94'
L22	N 22° 14' 41" W	81.81'
L23	N 64° 21' 07" W	26.31'
L24	P 33° 35' 06" W	116.78'
L25	N 71° 39' 39" W	29.86'
L26	N 68° 58' 43" W	47.26'
L27	N 36° 31' 35" W	228.78'
L28	N 34° 28' 15" E	48.11'
L29	N 23° 33' 57" W	33.24'
L30	N 60° 47' 31" W	61.81'
L31	N 10° 45' 27" W	52.58'
L32	N 80° 45' 20" E	38.10'
L33	N 1° 42' 06" E	66.89'
L34	N 63° 41' 50" E	20.42'
L35	S 85° 31' 58" E	71.23'
L36	N 21° 19' 45" E	45.07'
L37	N 3° 08' 42" W	29.69'
L38	N 42° 12' 18" W	85.03'
L39	N 73° 28' 07" W	25.52'
L40	S 54° 56' 40" W	84.60'
L41	S 28° 48' 30" W	31.93'
L42	S 73° 36' 48" W	48.28'
L43	S 31° 30' 54" W	33.37'
L44	S 68° 27' 37" W	78.28'
L45	N 43° 59' 37" W	26.42'
L46	N 25° 51' 35" E	51.72'
L47	N 49° 37' 28" W	23.05'
L48	N 61° 33' 39" W	41.64'
L49	N 1° 05' 31" W	71.12'
L50	N 29° 19' 51" W	108.59'
L51	N 52° 20' 04" W	31.79'
L52	N 23° 12' 12" E	68.14'

CURVE TABLE

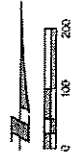
CURVE	DELTA	RADIUS	ARC	CHORD BEARING	CHORD LENGTH
C1	4° 17' 32"	3806.14'	218.23'	S 20° 14' 42" E	218.81'
C2	8° 44' 58"	1713.98'	261.62'	S 33° 22' 07" E	265.37'

PROPERTY CORNERS FOUND

- (A) - FOUND 3/4" SQUARE PIPE
- (B) - FOUND 1/2" OPEN TOP PIPE
- (C) - FOUND 3/4" SQUARE PIPE
- (D) - FOUND 3/4" SQUARE PIPE
- (E) - FOUND 1" OPEN TOP PIPE
- (F) - FOUND 1/2" OPEN TOP PIPE

LEGEND

- - SECTION CORNER FOUND
- - PROPERTY CORNER FOUND
- \* - CALCULATED POINT



NO.	REMARKS

A 13.67 AC. TRACT IN LOTS 10, 44, 45 & 46, 17, IN THE S2NE4 & NE4SE4 SEC. 21-19N-R7E, LANCASTER CO., NE

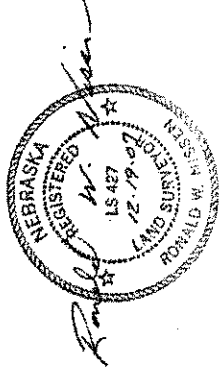
LANCASTER OFFICE  
825 S. 19th St.  
Lanester, NE 68020  
402-439-2200  
www.hms.com



PLANNED  
LITIGATION  
DATE  
DATE  
DATE

**SURVEYOR'S CERTIFICATION**

I, RONALD W. NESSEN, A PROFESSIONAL REGISTERED LAND SURVEYOR UNDER THE LAWS OF THE STATE OF NEBRASKA, CERTIFY THAT THE SURVEY REPRESENTED ON THIS SURVEY RECORD WAS PERFORMED BY ME AND COMPLETED ON DECEMBER 18TH, 2007. THE MONUMENTS AND DISTANCES SHOWN ARE CORRECT TO THE BEST OF MY KNOWLEDGE AND BELIEF. PERMANENT MONUMENTS WERE FOUND OR ESTABLISHED AS DESCRIBED ON THIS SURVEY RECORD. ALL DISTANCES SHOWN ARE REPRESENTED IN FEET AND DECIMALS OF A FOOT.



**SECTION CORNER TIES**

SOUTH 70TH ST.  
NE COR OF THE S HALF OF THE NE QUARTER  
3/4" REBAR WALCSM ALUM CAP  
NW 83.96' TO FD 3/4" REBAR  
E 51.25' TO FD 3/4" REBAR  
E 39.93' TO FD 3/4" SQUARE PIPE  
E 40.60' TO FD 3/4" REBAR  
SE 52.00' TO FD 3/4" REBAR  
W 48.37' TO FD 3/4" SQUARE PIPE  
W 49.87' TO FD 3/4" IRON PIPE

70TH & YANKEE HILL RD  
SE CORNER SEC 21-19N-R7E  
1" IRON PIPE WALCSM ALUM CAP  
NE 87.51' TO FD BRASS DISK E END CONC HDWL  
SE 69.84' TO FD MAG NAIL IN CHSLD "X" W END CONC HDWL  
SW 73.73' TO FD 3/4" REBAR  
W 128.36' TO FD 1/2" HEX BOLT  
NW 70.40' TO FD 3/4" IRON PIPE W/LS 583 CAP

70TH & PINE LAKE RD  
NE COR SEC 21-19N-R7E  
LCSM ALUM CAP IN POT  
NW 50.05' TO CHSLD "X" SE COR LIGHT POLE BASE  
NE 88.43' TO CHSLD "X" SW COR LIGHT POLE BASE  
SE 84.70' TO CHSLD "X" NE COR LIGHT POLE BASE  
SW 87.25' TO CHSLD "X" SE COR LIGHT POLE BASE

SOUTH 70TH ST.  
E1/4 CORNER SEC 21-19N-R7E  
3/4" IRON PIPE WALCSM ALUM CAP  
NE 107.73' TO FD BRASS DISK TOP CONC HDWL  
NE 89.77' TO FD 3/4" REBAR  
E 43.96' TO FD 3/4" REBAR  
SW 57.02' TO FD 3/4" IRON PIPE  
W 49.95' TO FD 3/4" IRON PIPE  
W 60.06' TO FD 3/4" REBAR  
NW 55.33' TO FD 3/4" REBAR

**LEGAL DESCRIPTION**

A TRACT OF LAND LOCATED IN LOTS 30, 44, 45 AND 46, IRREGULAR TRACTS, IN THE SOUTH HALF OF THE NORTHEAST QUARTER AND IN THE NORTHEAST QUARTER OF SECTION 21, TOWNSHIP 9 NORTH, RANGE 7 EAST OF THE SIXTH PRINCIPAL MERIDIAN, LANCASTER COUNTY, NEBRASKA, DESCRIBED AS FOLLOWS:

REFERRING TO THE NORTHEAST CORNER OF THE SOUTH HALF OF THE NORTHEAST QUARTER OF SAID SECTION 21, THENCE N 80°34'47" W, ASSUMED BEARING, ALONG THE NORTH LINES OF SAID LOTS 30 AND 46, A DISTANCE OF 1365.24 FEET TO THE FLOWLINE OF A WATERCOURSE AND THE POINT OF BEGINNING; THENCE N 89°54'47" W, ALONG SAID NORTH LINE, A DISTANCE OF 344.31 FEET; TO THE EASTERLY RIGHT OF WAY LINE OF THE OMAHA PUBLIC POWER DISTRICT RAILROAD; THENCE ALONG SAID EASTERLY RIGHT OF WAY LINE AND ALONG A NON-TANGENT 2606.16 FOOT RADIUS CURVE TO THE LEFT, SAID CURVE HAVING A CENTRAL ANGLE OF 4°47'52" AND AN APC DISTANCE OF 218.23 FEET, THE LONG CHORD OF SAID CURVE BEARS S 26°34'42" E, A DISTANCE OF 218.16 FEET; THENCE ALONG SAID EASTERLY RIGHT OF WAY LINE AND ALONG A NON-TANGENT 1713.18 FOOT RADIUS CURVE TO THE LEFT, SAID CURVE HAVING A CENTRAL ANGLE OF 8°44'59" AND AN ARC DISTANCE OF 281.62 FEET, THE LONG CHORD OF SAID CURVE BEARS S 33°22'07" E, A DISTANCE OF 261.37 FEET; THENCE S 37°43'33" E, ALONG SAID EASTERLY RIGHT OF WAY LINE NON-TANGENT CURVE, A DISTANCE OF 114.40 FEET TO THE SOUTH LINE OF SAID SOUTH HALF OF THE NORTHEAST QUARTER; THENCE S 37°45'51" E, ALONG SAID EASTERLY RIGHT OF WAY LINE, A DISTANCE OF 985.88 FEET TO THE WESTERLY RIGHT OF WAY LINE OF SOUTH 70TH STREET; THENCE N 44°43'11" E, ALONG SAID WESTERLY RIGHT OF WAY LINE, A DISTANCE OF 65.67 FEET TO THE FLOWLINE OF SAID WATERCOURSE; THENCE N 32°27'30" W, ALONG SAID FLOWLINE, A DISTANCE OF 181.63 FEET; THENCE N 12°12'28" W, ALONG SAID FLOWLINE, A DISTANCE OF 83.81 FEET; THENCE N 35°17'18" E, ALONG SAID FLOWLINE, A DISTANCE OF 313.53 FEET; THENCE N 22°19'41" W, ALONG SAID FLOWLINE, A DISTANCE OF 36.80 FEET; THENCE N 54°19'59" W, ALONG SAID FLOWLINE, A DISTANCE OF 55.65 FEET; THENCE N 47°38'59" W, ALONG SAID FLOWLINE, A DISTANCE OF 7.43 FEET; THENCE N 30°44'47" W, ALONG SAID FLOWLINE, A DISTANCE OF 144.38 FEET; THENCE S 74°54'52" E, ALONG SAID FLOWLINE, A DISTANCE OF 117.57 FEET; THENCE S 18°06'19" E, ALONG SAID FLOWLINE, A DISTANCE OF 30.10 FEET; THENCE N 49°49'54" W, ALONG SAID FLOWLINE, A DISTANCE OF 16.83 FEET; THENCE S 67°14'20" W, ALONG SAID FLOWLINE, A DISTANCE OF 92.00 FEET; THENCE S 18°06'19" E, ALONG SAID FLOWLINE, A DISTANCE OF 7.43 FEET; THENCE N 3°08'42" W, ALONG SAID FLOWLINE, A DISTANCE OF 14.06 FEET; THENCE S 77°48'07" W, ALONG SAID FLOWLINE, A DISTANCE OF 58.54 FEET; THENCE N 52°18'40" W, ALONG SAID FLOWLINE, A DISTANCE OF 48.32 FEET; THENCE S 69°37'37" W, ALONG SAID FLOWLINE, A DISTANCE OF 15.80 FEET; THENCE N 10°26'07" W, ALONG SAID FLOWLINE, A DISTANCE OF 81.91 FEET; THENCE N 84°21'01" W, ALONG SAID FLOWLINE, A DISTANCE OF 32.76 FEET; THENCE N 42°47'32" W, ALONG SAID FLOWLINE, A DISTANCE OF 24.89 FEET; THENCE N 78°09'02" W, ALONG SAID FLOWLINE, A DISTANCE OF 29.66 FEET; THENCE N 68°58'43" W, ALONG SAID FLOWLINE, A DISTANCE OF 26.31 FEET; THENCE N 0°42'56" W, ALONG SAID FLOWLINE, A DISTANCE OF 14.06 FEET; THENCE N 21°19'45" E, ALONG SAID FLOWLINE, A DISTANCE OF 11.17 FEET; THENCE N 23°33'57" W, ALONG SAID FLOWLINE, A DISTANCE OF 47.26 FEET; THENCE N 38°21'38" W, ALONG SAID FLOWLINE, A DISTANCE OF 16.78 FEET; THENCE N 7°38'59" W, ALONG SAID FLOWLINE, A DISTANCE OF 52.58 FEET; THENCE N 80°45'00" E, ALONG SAID FLOWLINE, A DISTANCE OF 33.24 FEET; THENCE N 36°21'38" W, ALONG SAID FLOWLINE, A DISTANCE OF 228.76 FEET; THENCE N 13°16'27" W, ALONG SAID FLOWLINE, A DISTANCE OF 20.42 FEET; THENCE N 80°45'00" E, ALONG SAID FLOWLINE, A DISTANCE OF 38.10 FEET; THENCE N 1°42'08" E, ALONG SAID FLOWLINE, A DISTANCE OF 61.81 FEET; THENCE N 34°28'16" W, ALONG SAID FLOWLINE, A DISTANCE OF 141.10 FEET; THENCE N 85°31'58" E, ALONG SAID FLOWLINE, A DISTANCE OF 185.03 FEET; THENCE N 21°19'45" E, ALONG SAID FLOWLINE, A DISTANCE OF 66.88 FEET; THENCE N 3°08'42" W, ALONG SAID FLOWLINE, A DISTANCE OF 29.98 FEET; THENCE N 41°10'38" W, ALONG SAID FLOWLINE, A DISTANCE OF 14.06 FEET; THENCE N 73°28'07" W, ALONG SAID FLOWLINE, A DISTANCE OF 48.28 FEET; THENCE N 54°58'48" W, ALONG SAID FLOWLINE, A DISTANCE OF 84.60 FEET; THENCE S 85°27'52" W, ALONG SAID FLOWLINE, A DISTANCE OF 73.77 FEET; THENCE S 85°27'52" W, ALONG SAID FLOWLINE, A DISTANCE OF 31.53 FEET; THENCE S 73°35'48" W, ALONG SAID FLOWLINE, A DISTANCE OF 49.28 FEET; THENCE N 31°30'34" W, ALONG SAID FLOWLINE, A DISTANCE OF 84.60 FEET; THENCE S 85°27'52" W, ALONG SAID FLOWLINE, A DISTANCE OF 78.28 FEET; THENCE N 41°19'27" W, ALONG SAID FLOWLINE, A DISTANCE OF 106.89 FEET; THENCE N 25°16'35" E, ALONG SAID FLOWLINE, A DISTANCE OF 517.2 FEET; THENCE N 16°17'26" W, ALONG SAID FLOWLINE, A DISTANCE OF 25.08 FEET; THENCE N 81°33'39" W, ALONG SAID FLOWLINE, A DISTANCE OF 41.64 FEET; THENCE N 17°08'33" W, ALONG SAID FLOWLINE, A DISTANCE OF 71.72 FEET; THENCE N 25°19'51" W, ALONG SAID FLOWLINE, A DISTANCE OF 106.89 FEET; THENCE N 52°20'04" W, ALONG SAID FLOWLINE, A DISTANCE OF 31.78 FEET; THENCE N 23°12'12" E, ALONG SAID FLOWLINE, A DISTANCE OF 68.14 FEET TO THE NORTH LINE OF SAID LOT 30 AND THE POINT OF BEGINNING, CONTAINING AN AREA OF 13.67 ACRES.