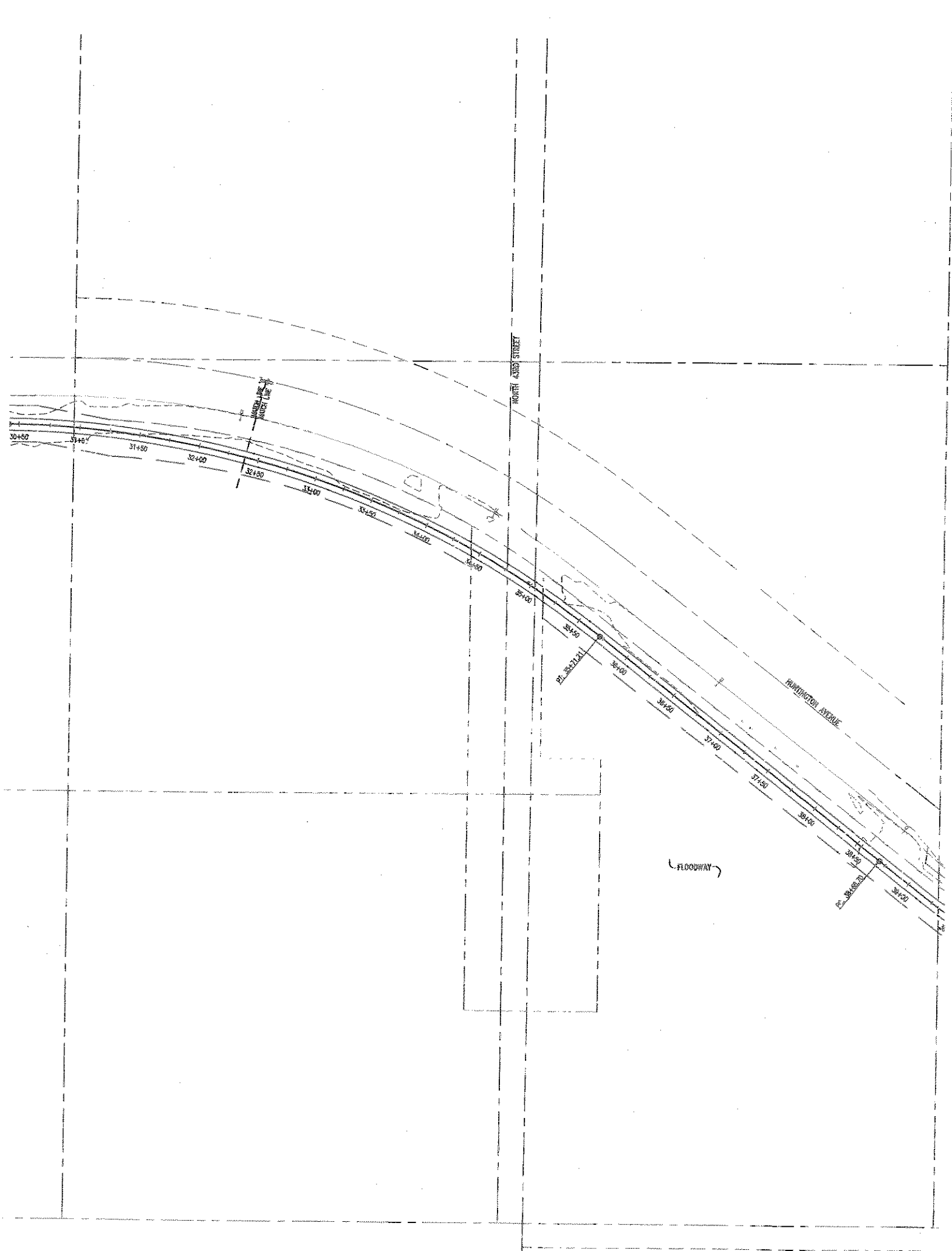


PREFABRICATED BRIDGE TO SPAN APPROXIMATELY 90'-0" OVER DRAINAGE AREA

FLOODWAY

FLOODWAY AND ...

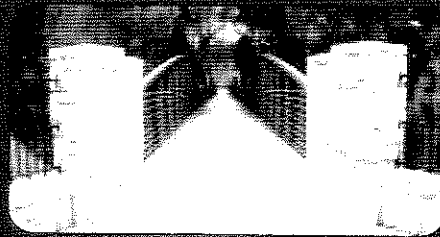


Clearwater, FL



8' x 100'

Lfe University, Marietta, GA



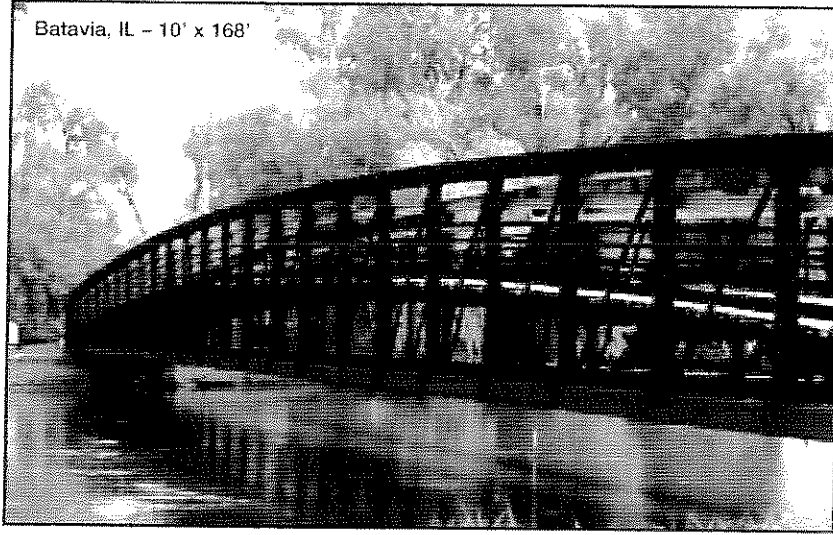
3-10' x 100'

Houston, TX



12' x 140'

Batavia, IL - 10' x 168'

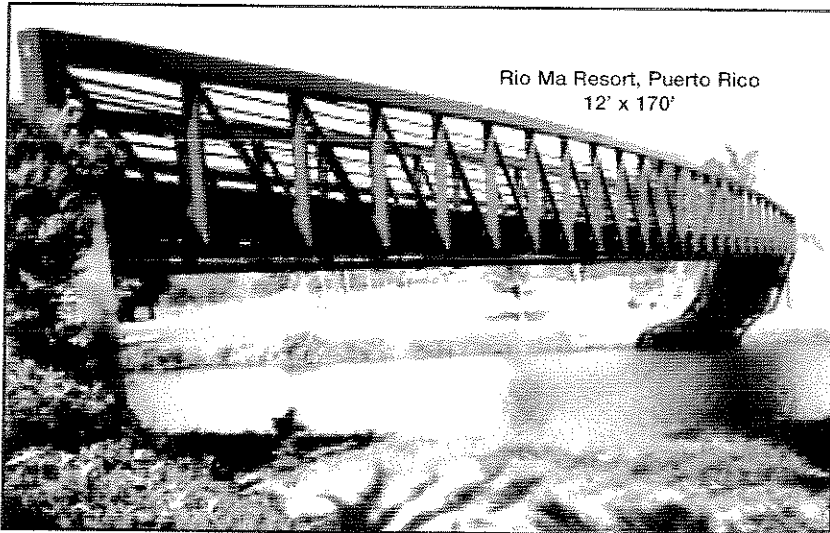


### The "CAPSTONE" Modified Bow



Steadfast Bridge Company introduces the "Capstone" Series for projects requiring a long span bridge with limited approach space. The truss height of the "Capstone" varies to allow a low abutment backwall while still maintaining maximum truss depth at the center. This modified bow truss design also allows a constant rail height for an unobstructed view over the top chord. The "Capstone" is perfect for longer spans up to 250'.

Rio Ma Resort, Puerto Rico  
12' x 170'



✓ *Virtually all Steadfast Bridges can be installed in less than one day.*

02890/BIL

BuyLine 02852

Omaha, NE



10' x 160'

Lebanon, AL



13' x 95'

Albuquerque, NM



10' x 150'

February 13, 2006

Mr. Harry B. Kroos  
Public Works/Utilities  
Engineering Services  
531 Westgate Blvd, Suite 100  
Lincoln NE 68528

Re: Occupying Public Way with Bike Trail

Mr. Kroos:

As you know, the University of Nebraska is donating a 30' easement for the placement of a Hike/Bike trail that will boarder the north boundaries of the University's East Campus with the trail running east/west along the south side of Huntington/Leighton Street between 33<sup>rd</sup> and 48<sup>th</sup> Streets.

In designing the trail we have encountered two areas we need to address with the City. The trail route has been designed to follow the property line of Board of Regents owned land, but will also cross 43<sup>rd</sup> Street. As well, in the vicinity of vacated 45<sup>th</sup> Street the University property line makes a jog that is not conducive to a smooth flowing trail.

Therefore, the University respectfully requests to occupy public right-of-way for placement of the Hike/Bike trail in the two locations mentioned above. The areas are shown on the enclosed drawing.

In your conversations with Kevin Herr, Project Manager, I believe you are aware we are under a very tight schedule for submitting documents to accompany the grant application for construction of the trail. Any help you can give to expedite this process would be very much appreciated.

Thank you

Sincerely,



Linda Cowdin  
UNL Property Manager

Enclosure

c: Kevin Herr