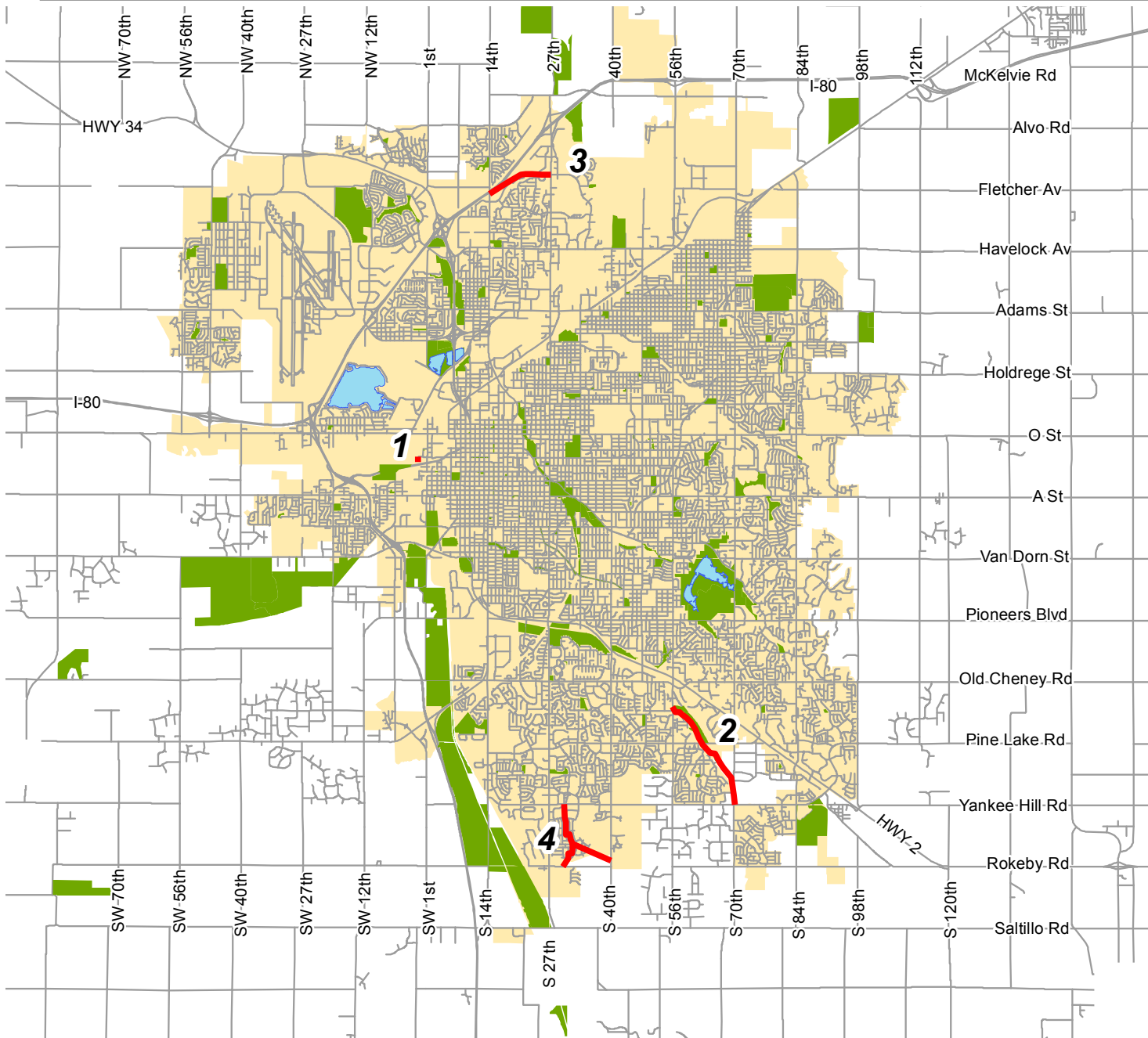
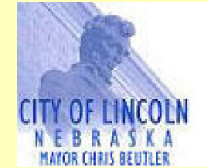






Pedestrian, Bike & Trails

**Lincoln Metropolitan Planning Organization
Transportation Improvement Program**

**Ped, Bike and Trails
FY 2021 - 2024**



-  Trail Projects
-  Existing Parks

- #1 Rosa Parks Way Trail**
- #2 Beal Slough Trail Project**
- #3 Fletcher Landmark Trail**
- #4 Wilderness Hills Trail**



Lower Platte South
Natural Resources District



**Consult the detailed project descriptions
and funding summary for further information.**

2021-2024 LINCOLN CITY/LANCASTER COUNTY, NEBRASKA TRANSPORTATION IMPROVEMENT PROGRAM	AGENCY: Pedestrian, Bike & Trails DIVISION: Planning Area Projects
---	---

PROJ NO <small>(Map)</small>	PROJECT <small>(Location & Distance) (Improvement Description)</small>	PROGRAMMED EXPENDITURES & FUNDING SOURCES (FS) (000's)												
		PRIORITY PROJECTS					COST BEYOND PROGRAM	TOTAL PROJECT COSTS						
		PRIOR FISCAL YEARS	FS	2020-21	FS	2021-22			FS	2022-23	FS	2023-24	FS	
1	<u>Lower Platte South Natural Resource District</u>													
	Rosa Parks Way Trail	PE	41.6	TA1										
	Railroad Undercrossing trail west of 1st and J Street, 900 feet long and 10' wide concrete surface.	PE	10.4	NR										
		ROW			17.6	TA1								
		ROW			4.4	NR								
		Construction			609.6	TA1								
		Construction			152.4	NR								
		Construction			50.0	RT								
		Construction			5.0	GP								
		CE			97.6	TA1								
	CE			24.4	NR									
	C.N. 12945 ENH-55(164) TOTAL		52.0			961.0		0.0		0.0	0.0	1,013.0		
2	<u>City of Lincoln Parks & Recreation Department</u>													
	Beal Slough Trail Project	PE	76.2	TA2										
	Trail project to extend southeasterly along the Beal Slough Channel from 56th Street & London Road to 70th Street & Yankee Hill Road. The trail will be on city owned property to Pine Lake Road where it will connect with an underpass at Pine Lake Road (included with the street project). trail will continue southeast parallel to the railroad and the Beal Slough Channel, connecting to 70th Street. Ten foot concrete trail on 20 foot right-of-way. Total 2.22 miles.	PE	19.1	LN										
		ROW			8.0	TA2								
		ROW			2.0	LN								
		Construction			698.6	TA2								
		Construction			174.7	LN								
		CE			95.3	TA2								
		CE			23.8	LN								
		C.N. 13366 TAP-55(182) TOTAL		105.3			992.4		0.0		0.0	0.0	1,097.7	
3	<u>Fletcher Landmark Trail</u>													
	Trail project for concrete trail to follow primarily alongside Fletcher Street from N. 14th Street to N. 27th Street.	PE	125.5	TA2										
		PE	31.4	LN										
		ROW					20.5	TA2						
		ROW					5.1	LN						
		Util							22.6	TA2				
		Util							5.7	LN				
		Construction							545.7	TA2				
		Construction							136.4	LN				
		CE							81.5	TA2				
	CE							20.4	LN					
	TOTAL		156.9			0.0		25.6		812.3		0.0	0.0	994.8
4	<u>Wilderness Hills Trail</u>													
	Continuing the Tierra Williamsburg trail from about 37th and Yankee Hill Rd South approximately .75 mile where it will branch off in two segments, one leading east to an underpass of S. 40th Street, the other southwest to an underpass of Rokeby Road.	PE							87.5	OF				
		PE							21.8	LN				
		ROW									27.4			
		Utilities									36.5			
		Construction									767.5			
		CE									109.3			
	TOTAL		0.0			0.0		0.0		0.0		109.3	940.7	1,050.0

2021-2024 LINCOLN CITY/LANCASTER COUNTY, NEBRASKA TRANSPORTATION IMPROVEMENT PROGRAM					AGENCY: Pedestrian, Bike & Trails DIVISION: Planning Area Projects						
PROJ NO (Map)	PROJECT (Location & Distance) (Improvement Description) (Control Number) (Project Number) (Work Phase)	PROGRAMMED EXPENDITURES & FUNDING SOURCES (FS) (000's)									
		PRIORITY PROJECTS					COST BEYOND PROGRAM	TOTAL PROJECT COSTS			
		PRIOR FISCAL YEARS	FS	2020-21	FS	2021-22			FS	2022-23	FS
FUNDING SUMMARY											
FEDERAL FUNDS											
CMAQ (Congestion Mitigation and Air Quality)		0.0		0.0		0.0		0.0		0.0	
RTP (Recreational Trails Program)		0.0		0.0		0.0		0.0		0.0	
TE (STPB - Sub-Allocation, Transportation Enhancement)		0.0		0.0		0.0		0.0		0.0	
TA1 (STP-TA - State Transportation Alternatives Program)		41.6		724.8		0.0		0.0		0.0	
TA2 (STP-TA - Lincoln MPO Transportation Alternatives Program)		209.7		793.9		20.5		649.8		0.0	
TAC (Advanced Construction for STP-TA-Transportation Alternatives Program Funding)		0.0		0.0		0.0		0.0		0.0	
SR (SRTS - Safe Routes to School)		0.0		0.0		0.0		0.0		0.0	
SUB-TOTAL FEDERAL FUNDING		251.3		1,518.7		20.5		649.8		0.0	2,440.4
STATE FUNDS											
NE (State Revenue / Aids)		0.0		0.0		0.0		0.0		0.0	
SUB-TOTAL STATE FUNDING		0.0		0.0		0.0		0.0		0.0	0.0
LOCAL FUNDS											
NR (Lower Platte South Natural Resource District Funds)		10.4		181.2		0.0		0.0		0.0	
GP (Great Plains Trail Network Private Contributions)		0.0		5.0		0.0		0.0		0.0	
RT (Railroad Transportation Safety District)		0.0		50.0		0.0		0.0		0.0	
LN (City of Lincoln Funds)		52.5		198.5		5.1		162.5		21.8	
HIC (City of Hickman Funds)		0.0		0.0		0.0		0.0		0.0	
PR (Other Private Contributions)		0.0		0.0		0.0		0.0		0.0	
OF (Other Funds)		0.0		0.0		0.0		0.0		87.5	
SUB-TOTAL LOCAL FUNDING		62.9		434.7		5.1		162.5		109.3	774.4
TOTAL		314.2		1,953.4		25.6		812.3		109.3	4,155.5

2021-2024 LINCOLN CITY/LANCASTER COUNTY, NEBRASKA TRANSPORTATION IMPROVEMENT PROGRAM	AGENCY: Pedestrian, Bike & Trails DIVISION: Planning Area Projects
---	---

PROJ NO <small>(Map)</small>	PROJECT <small>(Location & Distance)</small> <small>(Improvement Description)</small> <small>(Control Number) (Project Number) (Work Phase)</small>	PROGRAMMED EXPENDITURES & FUNDING SOURCES (FS) (000's)							COST BEYOND PROGRAM	TOTAL PROJECT COSTS
		PRIORITY PROJECTS								
		PRIOR FISCAL YEARS	FS	2020-21	FS	2021-22	FS	2022-23		
STATUS OF PREVIOUS YEARS PROJECTS										
<u>Projects Completed or Under Contract</u>										
<u>City of Lincoln Parks and Recreation Department</u>										
<u>Stonebridge Trail</u>										
Design and construction of a 10' wide, concrete bicycle, pedestrian trail, connecting the North 14th Street Trail with the Alvo Road Trail. This trail will begin at North 14th Street and Humphrey Avenue and proceed through the Stonebridge neighborhood										
	PE	72.0	TA2							
	PE	18.0	LN							
	ROW	107.0	TA2							
	ROW	26.7	LN							
	Construction	642.9	TA2							
	Construction	160.1	LN							
	CE	96.4	TA2							
	CE	24.1	LN							
<u>Wilderness Park Bridge</u>										
Replace Salt Creek Bridge 1/2 mile north of Saltillo Road.										
	PE	20.0	LN							
	PE	10.0	GP							
	PE	12.4	OF							
	Const/CE	359.6	LN							
	Const/CE	7.5	GP							
	Const/CE	20.1	OF							

