

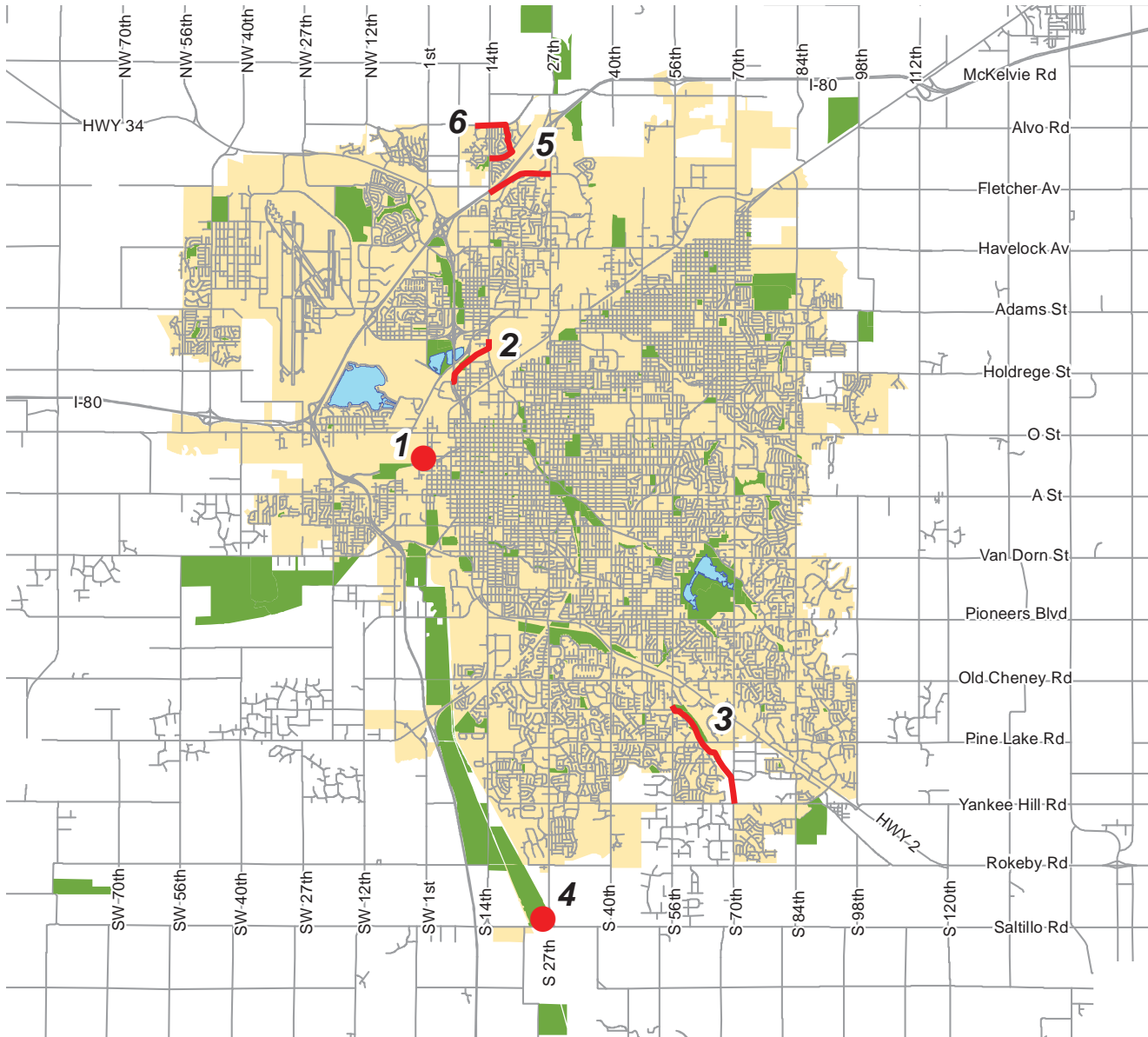


Ped, Bike & Trails

Lincoln Metropolitan Planning Organization
Transportation Improvement Program

Ped, Bike and Trails

FY 2018 - 2021



- Trail Projects
- Trail Projects
- Existing Parks

- #1 Rosa Parks Way Trail
- #2 Salt Creek Levee Trail
- #3 Beal Slough Trail Project
- #4 Wilderness Park Bridges
- #5 Fletcher Landmark Trail
- #6 Stonebridge Trail
- #7 Lincoln Bike Share System (not on map)



Lower Platte South
 Natural Resources District



*Consult the detailed project descriptions
 and funding summary for further information.*

2018-2021 LINCOLN CITY/LANCASTER COUNTY, NEBRASKA TRANSPORTATION IMPROVEMENT PROGRAM				AGENCY: Ped, Bike & Trails DIVISION: Planning Area Projects										
PROJ NO (Map)	PROJECT (Location & Distance) (Improvement Description)	(Control Number)	(Project Number)	(Work Phase)	PROGRAMMED EXPENDITURES & FUNDING SOURCES (FS) (000's)									
					PRIORITY PROJECTS					COST BEYOND PROGRAM	TOTAL PROJECT COSTS			
					PRIOR FISCAL YEARS	FS	2017-18	FS	2018-19			FS	2019-20	FS
Lower Platte South Natural Resource District														
1	Rosa Parks Way Trail Railroad Undercrossing trail west of 1st and J Street, 900 feet long and 10 wide concrete surface.			ROW	8.0	TA1								
				ROW	2.0	NR								
				PE			41.6	TA1						
		C.N. 12945	ENH-55(164)	PE			10.4	NR						
				Construction			400.0	TA1						
				Construction			45.0	NR						
				Construction			50.0	RT						
				Construction			5.0	GP						
				CE			80.0	TA1						
				CE			20.0	NR						
				TOTAL	10.0		652.0		0.0	0.0	0.0	0.0	0.0	662.0
Salt Creek Levee Trail														
2	N. 14th Street to Cornhusker Highway - develop a 10-foot wide concrete trail on the Oak Creek and Salt Creek Levees. The 4, 950 foot concrete trail will begin where the newly constructed Haymarket Ball Park Trail terminates and continue northeasterly to Cornhusker Highway and connect to the northern segment of the Salt Creek Levee trail system.			PE	40.0	RTP								
				PE	10.0	NR								
				Construction			284.0	RTP						
				Construction			71.0	NR						
				Const/CE			40.0	RTP						
				Const/CE			10.0	NR						
				TOTAL	50.0		405.0		0.0	0.0	0.0	0.0	0.0	455.0
City of Lincoln Parks & Recreation Department														
3	Beal Slough Trail Project Trail project to extend southeasterly along the Beal Slough Channel from 56th Street & London Road to 70th Street and Yankee Hill Road. The trail will be on city owned property to Pine Lake Road where it will connect with an underpass at Pine Lake Road (included with the street project). The trail will continue southeast parallel to the railroad and the Beal Slough Channel, connecting to 70th Street. Ten foot concrete trail on 20 foot right-of-way. Total 2.22 miles.			PE	76.2	TA2								
				PE	19.1	LN								
				ROW			8.0	TA2						
				ROW			2.0	LN						
				Construction					698.6	TA2				
		C.N. 13366	TAP-55(182)	Construction					174.7	LN				
				CE					95.3	TA2				
				CE					23.8	LN				
				TOTAL	95.3		0.0		10.0	992.4	0.0	0.0	0.0	1,097.7

2018-2021 LINCOLN CITY/LANCASTER COUNTY, NEBRASKA TRANSPORTATION IMPROVEMENT PROGRAM				AGENCY: Ped, Bike & Trails DIVISION: Planning Area Projects							
PROJ NO (Map)	PROJECT (Location & Distance) (Improvement Description)	PROGRAMMED EXPENDITURES & FUNDING SOURCES (FS) (000's)									
		PRIORITY PROJECTS					COST BEYOND PROGRAM	TOTAL PROJECT COSTS			
		PRIOR FISCAL YEARS	FS	2017-18	FS	2018-19			FS	2019-20	FS
(Control Number)	(Project Number)	(Work Phase)									
4	Wilderness Park Bridges Replace South Saltillo Pedestrian Bridge. Other bridges to be addressed in the future include the arched bridge over Salt Creek just south of Calvert in the Epworth Park area; bridge over an unnamed tributary to Salt Creek near Hwy. 77 and Rokeby Rd.; bridge over the Horizon tributary just south of the Rock Island Corridor; and bridge accessing the Octagon Bldg. over old creek channel.	PE				22.0	LN				
		PE				37.4	OF				
		Construction				126.0	LN				
		Construction				214.5	OF				
		TOTAL	0.0	0.0	399.8	0.0	0.0	0.0	0.0	0.0	399.8
5	Fletcher Landmark Trail Trail project for concrete trail to follow primarily alongside Fletcher Street from N. 14th Street to N. 27th Street.	PE				68.8	TA2				
		PE				17.2	LN				
		ROW						20.5	TA2		
		ROW						5.1	LN		
		Construction								504.2	
		Construction								126.1	
		CE								68.8	
		CE								17.2	
TOTAL	0.0	0.0	0.0	86.0	25.6	716.3	827.9				
6	Stonebridge Trail Design and construction of a 10' wide, concrete bicycle, pedestrian trail, connecting the North 14th Street Trail with the Alvo Road Trail. This trail will be at North 14th Street and Humphrey Avenue and proceed through the Stonebridge neighborhood	PE	72.0	TA2							
		PE	18.0	LN							
		ROW	107.1	TA2							
		ROW	26.7	LN							
		Construction			642.9	TA2					
		Construction			160.1	LN					
		CE			96.4	TA2					
		CE			24.1	LN					
TOTAL	223.8	0.0	923.5	0.0	0.0	0.0	0.0	1,147.3			
7	City of Lincoln Lincoln Bike Share System Phase 1 of the Lincoln Bike Shared Project will install 17 stations and purchase 100 bikes. All stations will be non-bolted with solar and panels and location in the Public ROW. <i>Note: PE = PE/NEPA/Design/RC Construction includes Construction Engineering</i>	PE	8.0	CMAQ							
		PE	2.0	LN							
		NEPA	4.0	CMAQ							
		NEPA	1.0	LN							
		RC	8.0	CMAQ							
		RC	2.0	LN							
		NDOR	8.0	CMAQ							
		NDOR	2.0	LN							
		Construction	572.0	CMAQ							
		Construction	143.0	LN							
		TOTAL	750.0	0.0	0.0	0.0	0.0	0.0	0.0	750.0	

2018-2021 LINCOLN CITY/LANCASTER COUNTY, NEBRASKA TRANSPORTATION IMPROVEMENT PROGRAM				AGENCY: Ped, Bike & Trails DIVISION: Planning Area Projects							
PROJ NO (Map)	PROJECT (Location & Distance) (Improvement Description) (Control Number) (Project Number) (Work Phase)	PROGRAMMED EXPENDITURES & FUNDING SOURCES (FS) (000's)									
		PRIORITY PROJECTS					COST BEYOND PROGRAM	TOTAL PROJECT COSTS			
		PRIOR FISCAL YEARS	FS	2017-18	FS	2018-19			FS	2019-20	FS
FUNDING SUMMARY											
FEDERAL FUNDS											
CMAQ (Congestion Mitigation and Air Quality)		600.0		0.0		0.0		0.0		0.0	
RTP (Recreational Trails Program)		40.0		324.0		0.0		0.0		0.0	
TE (STPB - Sub-Allocation, Transportation Enhancement)		0.0		0.0		0.0		0.0		0.0	
TA1 (STP-TA - State Transportation Alternatives Program)		8.0		521.6		0.0		0.0		0.0	
TA2 (STP-TA - Lincoln MPO Transportation Alternatives Program)		255.3		0.0		747.3		862.7		20.5	
TAC (Advanced Construction for STP-TA-Transportation Alternatives Program Funding)		0.0		0.0		0.0		0.0		0.0	
SR (SRTS - Safe Routes to School)		0.0		0.0		0.0		0.0		0.0	
SUB-TOTAL FEDERAL FUNDING		903.3		845.6		747.3		862.7		20.5	0.0
STATE FUNDS											
NE (State Revenue / Aids)		0.0		0.0		0.0		0.0		0.0	
SUB-TOTAL STATE FUNDING		0.0		0.0		0.0		0.0		0.0	0.0
LOCAL FUNDS											
NR (Lower Platte South Natural Resource District Funds)		12.0		156.4		0.0		0.0		0.0	
GP (Great Plains Trail Network Private Contributions)		0.0		5.0		0.0		0.0		0.0	
RT (Railroad Transportation Safety District)		0.0		50.0		0.0		0.0		0.0	
LN (City of Lincoln Funds)		213.8		0.0		334.1		215.7		5.1	
HIC (City of Hickman Funds)		0.0		0.0		0.0		0.0		0.0	
PR (Other Private Contributions)		0.0		0.0		0.0		0.0		0.0	
OF (Other Funds)		0.0		0.0		251.9		0.0		0.0	
SUB-TOTAL LOCAL FUNDING		225.8		211.4		586.0		215.7		5.1	0.0
TOTAL		1,129.1		1,057.0		1,333.3		1,078.4		25.6	716.3
5,339.7											
STATUS OF PREVIOUS YEARS PROJECTS											
City of Hickman											
Hickman Road Trail Connections											
West connection: Eight-foot wide concrete bicycle/pedestrian trail to link existing north and south sides of Hickman Road and include pedestrian crossing signals and drainage improvements. East connection: Approximately 3,600 linear foot, 8 foot wide concrete bicycle/pedestrian trail from 6th & Locust to Hickman Road & Larkspur Drive, including two traffic crossings and a new 10 foot wide trail bridge.		ENH-55(174)	PE	100.1	TE						
		C.N. 13134	PE	25.0	HIC						
			ROW	101.44	TA1						
			ROW	25.36	HIC						
			Construction	619.75	TA1						
			Construction	154.94	HIC						
City of Lincoln Parks & Recreation Department											
Cavett Elem. To Grainger Connector											
Concrete Trail, 10 foot wide, Tierra Williamsburg connection at 37th & San Mateo to connect Cavett Elementary, 36th & San Mateo south to Yankee Hill Rd. 0.5 miles		ENH-55(172)	ROW	64.1	TA2						
		C.N. 13079	ROW	16.0	LC						

