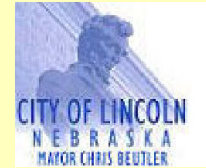
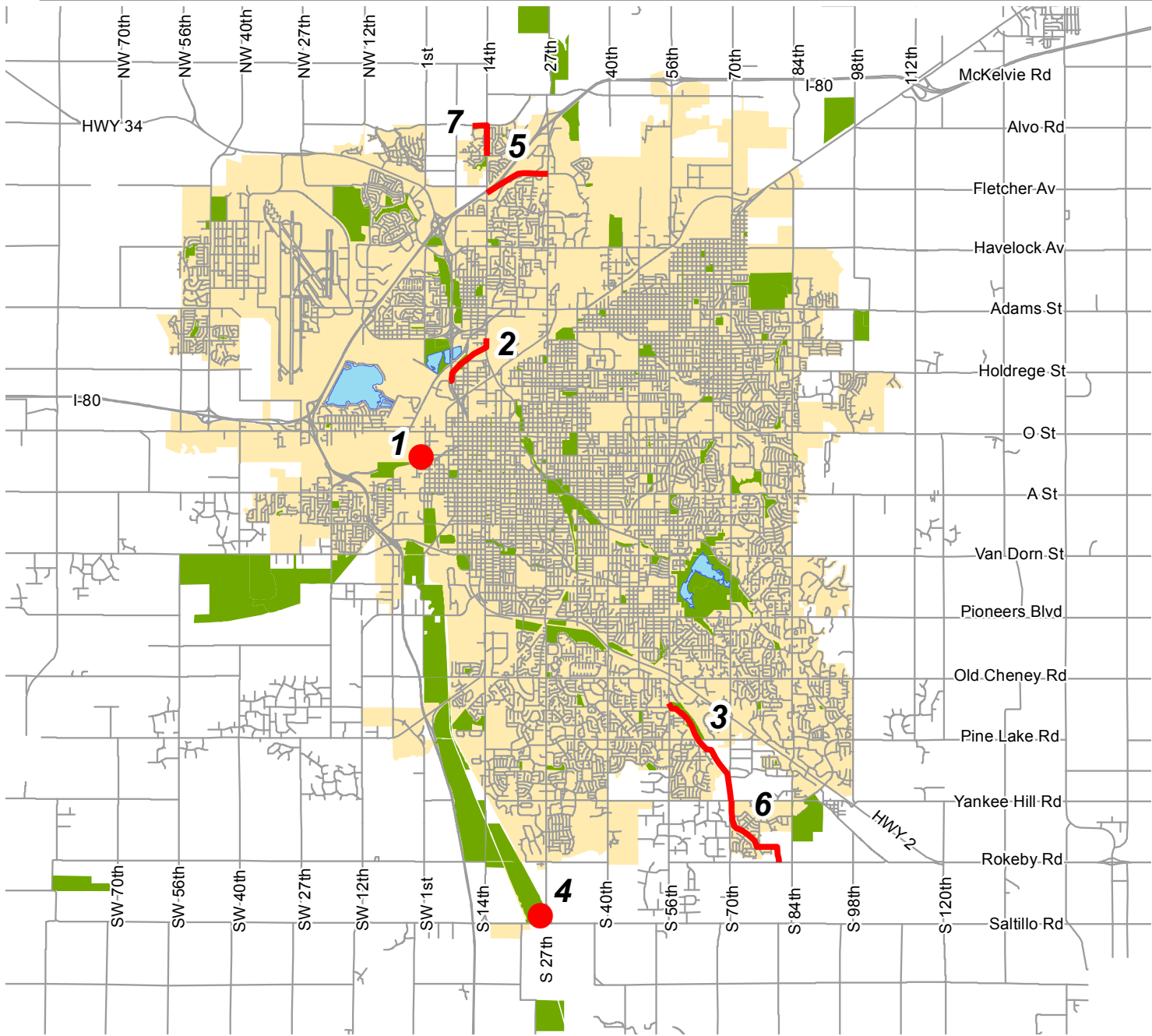




Ped, Bike & Trails

**Lincoln Metropolitan Planning Organization  
Transportation Improvement Program**

**Ped, Bike and Trails  
FY 2017 - 2020**



- Trail Projects
- Trail Projects
- Existing Parks

- #1 Rosa Parks Way Trail
- #2 Salt Creek Levee Trail
- #3 Beal Slough Trail Project
- #4 Wilderness Park Bridges
- #5 Fletcher Landmark Trail
- #6 Woodland Trail
- #7 Stonebridge Trail
- #8 Lincoln Bike Share System (not on map)



Lower Platte South  
Natural Resources District 



**Consult the detailed project descriptions  
and funding summary for further information.**

2017-2020 LINCOLN CITY/LANCASTER COUNTY, NEBRASKA TRANSPORTATION IMPROVEMENT PROGRAM				AGENCY: Ped, Bike & Trails DIVISION: Planning Area Projects											
PROJ NO (Map)	PROJECT (Location & Distance) (Improvement Description)	PROGRAMMED EXPENDITURES & FUNDING SOURCES (FS) (000's)													
		PRIORITY PROJECTS										COST BEYOND PROGRAM	TOTAL PROJECT COSTS		
		PRIOR FISCAL YEARS	FS	2016-17	FS	2017-18	FS	2018-19	FS	2019-20	FS				
(Control Number)	(Project Number)	(Work Phase)													
<b>Lower Platte South Natural Resource District</b>															
1	<b>Rosa Parks Way Trail</b> Railroad Undercrossing trail west of 1st and J Street, 900 feet long and 10 wide concrete surface.		ROW			8.0	TA1								
			ROW			2.0	NR								
		C.N. 12945	ENH-55(164)	Construction		400.0	TA1								
				Construction		45.0	NR								
				Construction		50.0	RT								
				Construction		5.0	GP								
				CE		80.0	TA1								
				CE		20.0	NR								
				TOTAL		0.0		610.0		0.0		0.0	610.0		
<b>Salt Creek Levee Trail</b>															
2	N. 14th Street to Cornhusker Highway - develop a 10-foot wide concrete trail on the Oak Creek and Salt Creek Levees. The 4, 950 foot concrete trail will begin where the newly constructed Haymarket Ball Park Trail terminates and continue northeasterly to Cornhusker Highway and connect to the northern segment of the Salt Creek Levee trail system.		PE		40.0	RTP									
			PE		10.0	NR									
				Construction		284.0	RTP								
				Construction		71.0	NR								
				Const/CE		40.0	RTP								
				Const/CE		10.0	NR								
<b>City of Lincoln Parks &amp; Recreation Department</b>															
3	<b>Beal Slough Trail Project</b> Trail project to extend southeasterly along the Beal Slough Channel from 56th Street & London Road to 70th Street and & Yankee Hill Road. The trail will be on city owned property to Pine Lake Road where it will connect with an underpass at Pine Lake Road (included with the street project). The trail will continue southeast parallel to the railroad and the Beal Slough Channel, connecting to 70th Street. Ten foot concrete trail on 20 foot right-of-way. Total 2.22 miles.		PE			76.2	TA2								
			PE			19.1	LN								
			ROW			8.0	TA2								
			ROW			2.0	LN								
				Construction		246.2	TA2	330.4	TA2	128.2	TA2				
		C.N. 13366	TAP-55(182)	Construction		61.5	LN	82.6	LN	32.1	LN				
				CE		48.0	TA2	48.0	TA2						
				CE		12.0	LN	12.0	LN						
				TOTAL		0.0		473.0		473.0		160.3	0.0	0.0	1,106.3

2017-2020 LINCOLN CITY/LANCASTER COUNTY, NEBRASKA TRANSPORTATION IMPROVEMENT PROGRAM				AGENCY: Ped, Bike & Trails DIVISION: Planning Area Projects									
PROJ NO (Map)	PROJECT (Location & Distance) (Improvement Description)  (Control Number) (Project Number) (Work Phase)	PROGRAMMED EXPENDITURES & FUNDING SOURCES (FS) (000's)						COST BEYOND PROGRAM	TOTAL PROJECT COSTS				
		PRIORITY PROJECTS											
		PRIOR FISCAL YEARS	FS	2016-17	FS	2017-18	FS			2018-19	FS	2019-20	FS
4	<b>Wilderness Park Bridges</b> Replace South Saitillo Pedestrian Bridge. Other bridges to be addressed in the future include the arched bridge over Salt Creek just south of Calvert in the Epworth Park area; bridge over an unnamed tributary to Salt Creek near Hwy. 77 and Rokeby Rd.; bridge over the Horizon tributary just south of the Rock Island Corridor; and bridge accessing the Octagon Bldg. over old creek channel.	TOTAL	0.0		0.0		0.0		0.0		150.0 OF 30.0 GP 180.0	0.0	180.0
5	<b>Fletcher Landmark Trail</b> Trail project for concrete trail to follow primarily alongside Fletcher Street from N. 14th Street to N. 27th Street.	TOTAL	0.0		0.0		0.0	400.0 LN	400.0		0.0	0.0	400.0
6	<b>Woodland Trail</b> Trail project for concrete trail extending generally in a north-south direction from 70th St. and Yankee Hill Road to 80th St. and Rokeby Road	TOTAL	0.0		0.0		0.0	180.0 LN 720.0 TA2	900.0		0.0	0.0	900.0
7	<b>Stonebridge Trail</b> Design and construction of a 10' wide, concrete bicycle, pedestrian trail, connecting the North 14th Street Trail with the Alvo Road Trail. This trail will be at North 14th Street and Humphrey Avenue and proceed through the Stonebridge neighborhood	PE	17.8	TE									
		PE	4.4	LN									
		ROW			12.0	TA2							
		ROW			3.0	LN							
		Construction			67.6	TA2							
		Construction			367.7	TA2							
		Construction			108.8	LN							
		TOTAL	22.2		559.1		0.0	0.0	0.0		0.0	0.0	559.1
<b>City of Lincoln</b>													
8	<b>Lincoln Bike Share System</b> Phase 1 of the Lincoln Bike Shared Project will install 15 stations and purchase 100 bikes. All stations will be non-bolted with solar and panels and location in the Public ROW.	PE	8.0	CMAQ									
		PE	2.0	LN									
		NEPA	4.00	CMAQ									
		NEPA	1.00	LN									
		RC	8.00	CMAQ									
		RC	2.00	LN									
		NDOR	8.00	CMAQ									
		NDOR	2.00	LN									
		Construction	572.00	CMAQ									
		Construction	143.00	LN									
		TOTAL	750.0		0.0		0.0	0.0	0.0		0.0	0.0	750.0

Note: PE = PE/NEPA/Design/RC  
Construction includes Construction Engineering

2017-2020 LINCOLN CITY/LANCASTER COUNTY, NEBRASKA TRANSPORTATION IMPROVEMENT PROGRAM				AGENCY: Ped, Bike & Trails DIVISION: Planning Area Projects						
PROJ NO (Map)	PROJECT (Location & Distance) (Improvement Description)  (Control Number) (Project Number) (Work Phase)	PROGRAMMED EXPENDITURES & FUNDING SOURCES (FS) (000's)								
		PRIORITY PROJECTS					COST BEYOND PROGRAM	TOTAL PROJECT COSTS		
		PRIOR FISCAL YEARS	FS	2016-17	FS	2017-18			FS	2018-19
<b>FUNDING SUMMARY</b>										
<b>FEDERAL FUNDS</b>										
CMAQ (Congestion Mitigation and Air Quality)			600.0		0.0		0.0		0.0	
RTP (Recreational Trails Program)			40.0		324.0		0.0		0.0	
TE (STPB - Sub-Allocation, Transportation Enhancement)			17.8		0.0		0.0		0.0	
TA1 (STP-TA - State Transportation Alternatives Program)			0.0		488.0		0.0		0.0	
TA2 (STP-TA - Lincoln MPO Transportation Alternatives Program)			0.0		825.7		378.4		128.2	
TAC (Advanced Construction for STP-TA-Transportation Alternatives Program Funding)			0.0		0.0		0.0		0.0	
SR (SRTS - Safe Routes to School)			0.0		0.0		0.0		0.0	
<b>SUB-TOTAL FEDERAL FUNDING</b>			<b>657.8</b>		<b>1,637.7</b>		<b>378.4</b>		<b>128.2</b>	
<b>STATE FUNDS</b>										
NE (State Revenue / Aids)			0.0		0.0		0.0		0.0	
<b>SUB-TOTAL STATE FUNDING</b>			<b>0.0</b>		<b>0.0</b>		<b>0.0</b>		<b>0.0</b>	
<b>LOCAL FUNDS</b>										
NR (Lower Platte South Natural Resource District Funds)			10.0		148.0		0.0		0.0	
GP (Great Plains Trail Network Private Contributions)			0.0		5.0		0.0		30.0	
RT (Railroad Transportation Safety District)			0.0		50.0		0.0		0.0	
LN (City of Lincoln Funds)			154.4		206.4		94.6		432.1	
HIC (City of Hickman Funds)			0.0		0.0		0.0		0.0	
PR (Other Private Contributions)			0.0		0.0		0.0		0.0	
OF (Other Funds)			0.0		0.0		0.0		150.0	
<b>SUB-TOTAL LOCAL FUNDING</b>			<b>164.4</b>		<b>409.4</b>		<b>94.6</b>		<b>432.1</b>	
<b>TOTAL</b>			<b>822.2</b>		<b>2,047.1</b>		<b>473.0</b>		<b>560.3</b>	
									<b>1,080.0</b>	
									<b>0.0</b>	
										<b>4,982.6</b>

2017-2020 LINCOLN CITY/LANCASTER COUNTY, NEBRASKA TRANSPORTATION IMPROVEMENT PROGRAM				AGENCY: Ped, Bike & Trails DIVISION: Planning Area Projects												
PROJ NO (Map)	PROJECT (Location & Distance) (Improvement Description)  (Control Number) (Project Number) (Work Phase)			PROGRAMMED EXPENDITURES & FUNDING SOURCES (FS) (000's)												
				PRIORITY PROJECTS								COST BEYOND PROGRAM	TOTAL PROJECT COSTS			
				PRIOR FISCAL YEARS	FS	2016-17	FS	2017-18	FS	2018-19	FS			2019-20	FS	
<b>STATUS OF PREVIOUS YEARS PROJECTS</b>																
<b><u>Projects Completed or Under Contract in FY 2015-16</u></b>																
<b><u>City of Lincoln Parks &amp; Recreation Department</u></b>																
<b>Billy Wolf Trail</b>																
Removal and replacement of the ramp on Billy Wolff Trail west of 27th and trail going west from 27th Street to the new bridge located south of Randolph. Total length of the project is 1,050 feet. This project will remove the 8 feet wide trail and replace it with a 10 feet wide, 5 inch thick concrete.			RTP 2014 (002)	PE/Design	16.7	RTP										
				PE/Design	4.2	LN										
				Construction	175.5	RT										
				Construction	23.9	LN										
				Construction	20.0	GP										
				Construction/Engineering	8.4	RT										
				Construction/Engineering	2.1	LN										
<b>Pioneers Park Trail Phase III</b>																
Extend the existrail trail in Pioneers Park to the western edge of the park. This will include a total of 6,575 feet of additional trail. 550 feet will be 8 feet wide concrete. 6,025 feet of 8 feet wide crushed limestone and 85 feet in length of bridge.				PE	36.0	RTP										
				PE	9.0	LN										
				Construction	329.9	RTP										
				Construction	82.5	LN										
				Const/CE	36.0	RTP										
	Const/CE	9.0	LN													